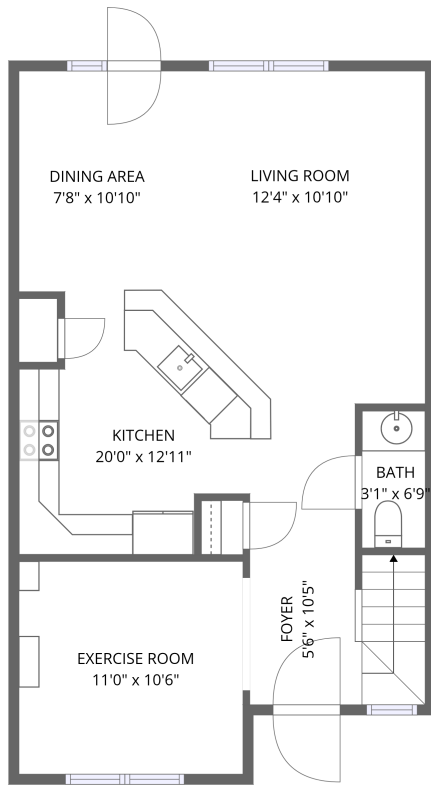
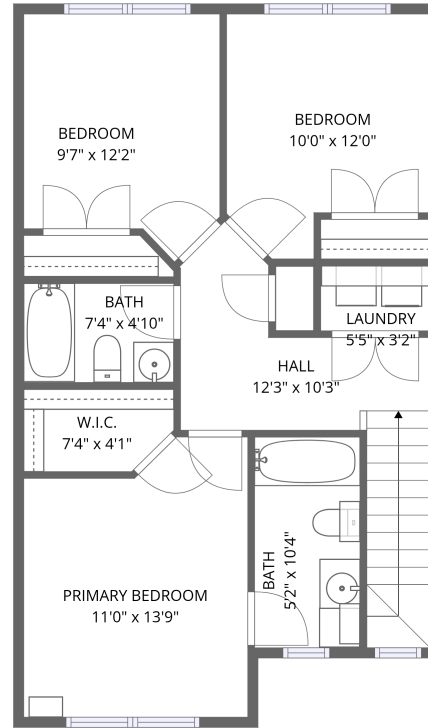


Home data report

100 Sprouse Lane, Timberlake, Lynchburg, Campbell County, Virginia, United States, 24502



1st floor



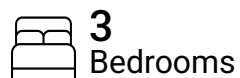
2nd floor

Total Area: 1320 sq. ft

1st Floor: 660 sq. ft, 2nd Floor: 660 sq. ft

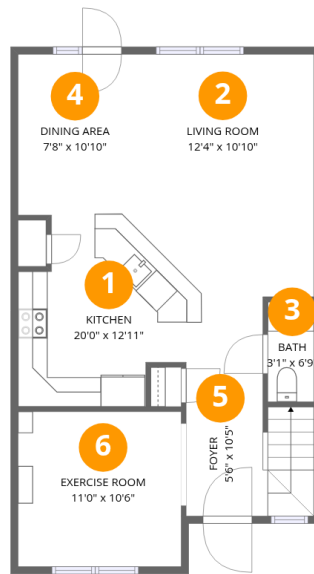
Excluded: Walls: 110 sq. ft

Property summary



Home data report

100 Sprouse Lane, Timberlake, Lynchburg, Campbell County, Virginia, United States, 24502



Room dimensions

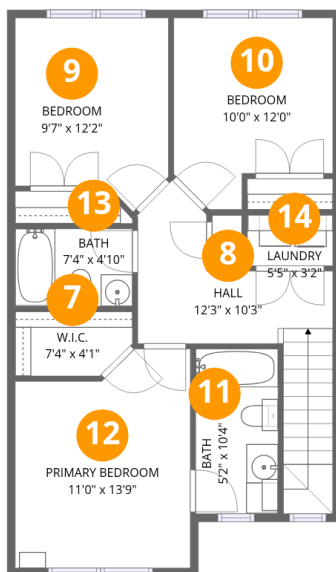
Floor 1

Total:660sqft Excluded: 0sqft

#		Dimensions	sqft	Counted as living area
1	Kitchen	20'0" x 12'11"	258 sq. ft	Yes
2	Living Room	12'4" x 10'10"	133 sq. ft	Yes
3	Bath	3'1" x 6'9"	21 sq. ft	Yes
4	Dining Area	7'8" x 10'10"	83 sq. ft	Yes
5	Foyer	5'6" x 10'5"	57 sq. ft	Yes
6	Exercise Room	11'0" x 10'6"	115 sq. ft	Yes

Home data report

100 Sprouse Lane, Timberlake, Lynchburg, Campbell County, Virginia, United States, 24502



Room dimensions

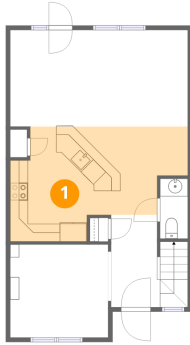
Floor 2

Total:660sqft Excluded: 0sqft

#		Dimensions	sqft	Counted as living area
7	W.I.C.	7'4" x 4'11"	30 sq. ft	Yes
8	Hall	12'3" x 10'3"	126 sq. ft	Yes
9	Bedroom	9'7" x 12'2"	117 sq. ft	Yes
10	Bedroom	10'0" x 12'0"	120 sq. ft	Yes
11	Bath	5'2" x 10'4"	54 sq. ft	Yes
12	Primary Bedroom	11'0" x 13'9"	152 sq. ft	Yes
13	Bath	7'4" x 4'10"	36 sq. ft	Yes
14	Laundry	5'5" x 3'2"	17 sq. ft	Yes

100 Sprouse Lane, Timberlake, Lynchburg, Campbell County,
Virginia, United States, 24502

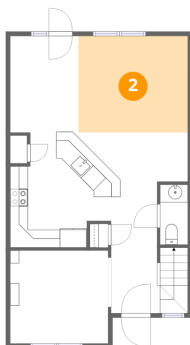
1 Floor 1 - Kitchen



Dimensions: 20'0" x 12'11"
Area: 258 sq. ft
Counted as living area: Yes

Heated: Yes
Finished: Yes
Enclosed: Yes
Contiguous: Yes
Permitted: Yes
Wet space: No
Addition: No
Conversion: No

2 Floor 1 - Living Room

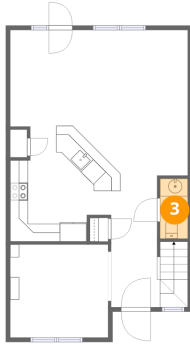


Dimensions: 12'4" x 10'10"
Area: 133 sq. ft
Counted as living area: Yes

Heated: Yes
Finished: Yes
Enclosed: Yes
Contiguous: Yes
Permitted: Yes
Wet space: No
Addition: No
Conversion: No

100 Sprouse Lane, Timberlake, Lynchburg, Campbell County, Virginia, United States, 24502

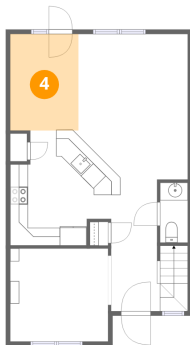
3 Floor 1 - Bath



Dimensions: 3'1" x 6'9"
Area: 21 sq. ft
Counted as living area: Yes

Heated: Yes
Finished: Yes
Enclosed: Yes
Contiguous: Yes
Permitted: Yes
Wet space: Yes
Addition: No
Conversion: No

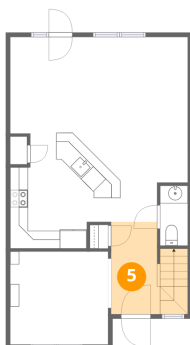
4 Floor 1 - Dining Area



Dimensions: 7'8" x 10'10"
Area: 83 sq. ft
Counted as living area: Yes

Heated: Yes
Finished: Yes
Enclosed: Yes
Contiguous: Yes
Permitted: Yes
Wet space: No
Addition: No
Conversion: No

5 Floor 1 - Foyer

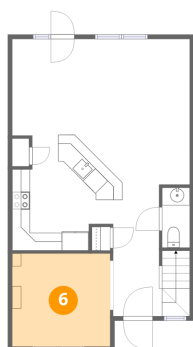


Dimensions: 5'6" x 10'5"
Area: 57 sq. ft
Counted as living area: Yes

Heated: Yes
Finished: Yes
Enclosed: Yes
Contiguous: Yes
Permitted: Yes
Wet space: No
Addition: No
Conversion: No

100 Sprouse Lane, Timberlake, Lynchburg, Campbell County, Virginia, United States, 24502

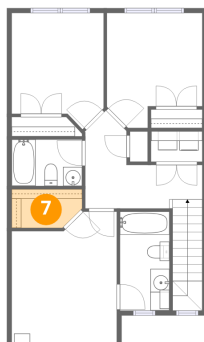
6 Floor 1 - Exercise Room



Dimensions: 11'0" x 10'6"
Area: 115 sq. ft
Counted as living area: Yes

Heated: Yes
Finished: Yes
Enclosed: Yes
Contiguous: Yes
Permitted: Yes
Wet space: No
Addition: No
Conversion: No

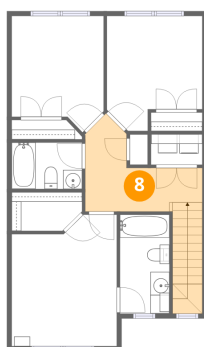
7 Floor 2 - W.I.C.



Dimensions: 7'4" x 4'1"
Area: 30 sq. ft
Counted as living area: Yes

Heated: Yes
Finished: Yes
Enclosed: Yes
Contiguous: Yes
Permitted: Yes
Wet space: No
Addition: No
Conversion: No

8 Floor 2 - Hall



Dimensions: 12'3" x 10'3"
Area: 126 sq. ft
Counted as living area: Yes

Heated: Yes
Finished: Yes
Enclosed: Yes
Contiguous: Yes
Permitted: Yes
Wet space: No
Addition: No
Conversion: No

100 Sprouse Lane, Timberlake, Lynchburg, Campbell County, Virginia, United States, 24502

9 Floor 2 - Bedroom



Dimensions: 9'7" x 12'2"
Area: 117 sq. ft
Counted as living area: Yes

Heated: Yes
Finished: Yes
Enclosed: Yes
Contiguous: Yes
Permitted: Yes
Wet space: No
Addition: No
Conversion: No

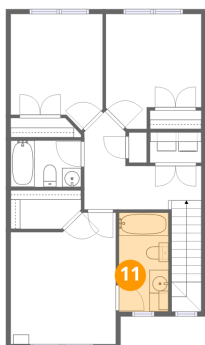
10 Floor 2 - Bedroom



Dimensions: 10'0" x 12'0"
Area: 120 sq. ft
Counted as living area: Yes

Heated: Yes
Finished: Yes
Enclosed: Yes
Contiguous: Yes
Permitted: Yes
Wet space: No
Addition: No
Conversion: No

11 Floor 2 - Bath

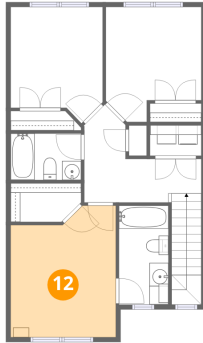


Dimensions: 5'2" x 10'4"
Area: 54 sq. ft
Counted as living area: Yes

Heated: Yes
Finished: Yes
Enclosed: Yes
Contiguous: Yes
Permitted: Yes
Wet space: Yes
Addition: No
Conversion: No

100 Sprouse Lane, Timberlake, Lynchburg, Campbell County,
Virginia, United States, 24502

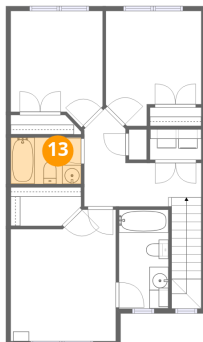
12 Floor 2 - Primary Bedroom



Dimensions: 11'0" x 13'9"
Area: 152 sq. ft
Counted as living area: Yes

Heated: Yes
Finished: Yes
Enclosed: Yes
Contiguous: Yes
Permitted: Yes
Wet space: No
Addition: No
Conversion: No

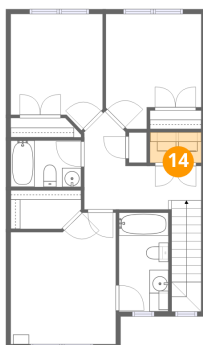
13 Floor 2 - Bath



Dimensions: 7'4" x 4'10"
Area: 36 sq. ft
Counted as living area: Yes

Heated: Yes
Finished: Yes
Enclosed: Yes
Contiguous: Yes
Permitted: Yes
Wet space: Yes
Addition: No
Conversion: No

14 Floor 2 - Laundry



Dimensions: 5'5" x 3'2"
Area: 17 sq. ft
Counted as living area: Yes

Heated: Yes
Finished: Yes
Enclosed: Yes
Contiguous: Yes
Permitted: Yes
Wet space: No
Addition: No
Conversion: No