

## Home data report

# 38w535 Red Bay Court, South Elgin, Kane County, Illinois, United States, 60175

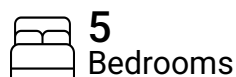


**Total Area: 5007 sq. ft**

Basement: 1488 sq. ft, 1st Floor: 1805 sq. ft, 2nd Floor: 1714 sq. ft

Excluded: Utility 233 sq. ft, Storage 77 sq. ft, Garage 638 sq. ft, Open to below 395 sq. ft, Walls: 339 sq. ft

## Property summary



Home data report

**38w535 Red Bay Court, South Elgin, Kane County, Illinois, United States, 60175**



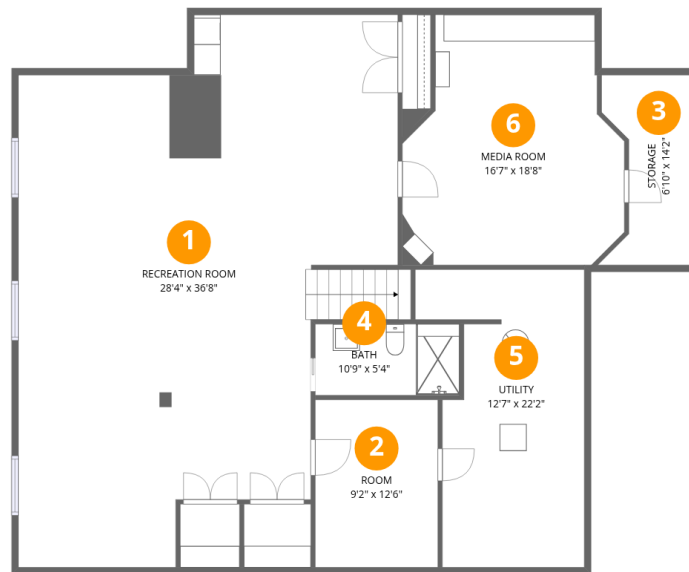
**1**  
Half baths



**1**  
Garages

## Home data report

**38w535 Red Bay Court, South Elgin, Kane County, Illinois, United States, 60175**



## Room dimensions

Floor 1 Below grade

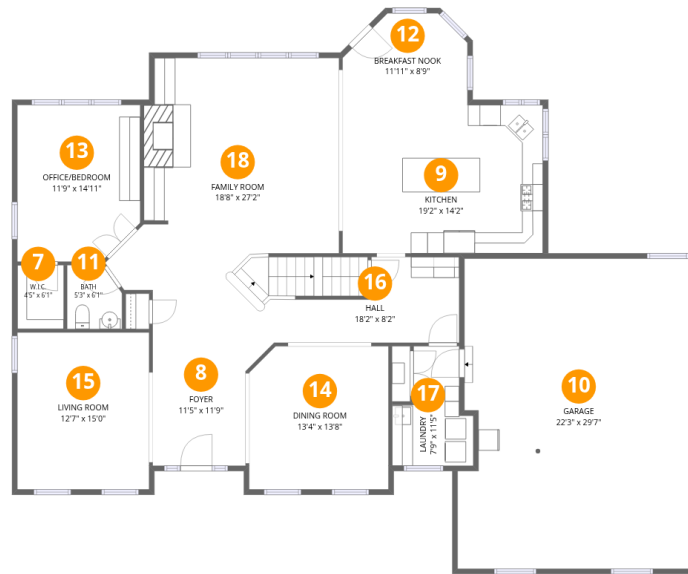
Total:1488sqft

Excluded: 310sqft

#		Dimensions	sqft	Counted as living area
1	Recreation Room	28'4" x 36'8"	938 sq. ft	Yes
2	Room	9'2" x 12'6"	114 sq. ft	Yes
3	Storage	6'10" x 14'2"	77 sq. ft	No
4	Bath	10'9" x 5'4"	57 sq. ft	Yes
5	Utility	12'7" x 22'2"	232 sq. ft	No
6	Media Room	16'7" x 18'8"	268 sq. ft	Yes

Home data report

38w535 Red Bay Court, South Elgin, Kane County, Illinois, United States, 60175



## Room dimensions

Floor 2

Total:1805sqft

Excluded: 638sqft

#		Dimensions	sqft	Counted as living area
7	W.I.C.	4'5" x 6'1"	27 sq. ft	Yes
8	Foyer	11'5" x 11'9"	108 sq. ft	Yes
9	Kitchen	19'2" x 14'2"	271 sq. ft	Yes
10	Garage	22'3" x 29'7"	638 sq. ft	No
11	Bath	5'3" x 6'1"	29 sq. ft	Yes
12	Breakfast Nook	11'11" x 8'9"	91 sq. ft	Yes
13	Office/Bedroom	11'9" x 14'11"	169 sq. ft	Yes
14	Dining Room	13'4" x 13'8"	179 sq. ft	Yes
15	Living Room	12'7" x 15'0"	189 sq. ft	Yes
16	Hall	18'2" x 8'2"	145 sq. ft	Yes
17	Laundry	7'9" x 11'5"	68 sq. ft	Yes

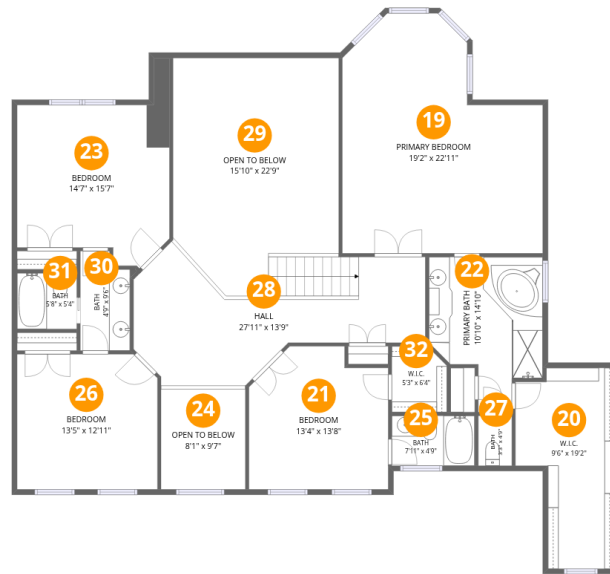
Home data report

**38w535 Red Bay Court, South Elgin, Kane County, Illinois, United States, 60175**

#		Dimensions	sqft	Counted as living area
18	Family Room	18'8" x 27'2"	455 sq. ft	Yes

Home data report

38w535 Red Bay Court, South Elgin, Kane County, Illinois, United States, 60175



## Room dimensions

Floor 3

Total:1714sqft

Excluded: 395sqft

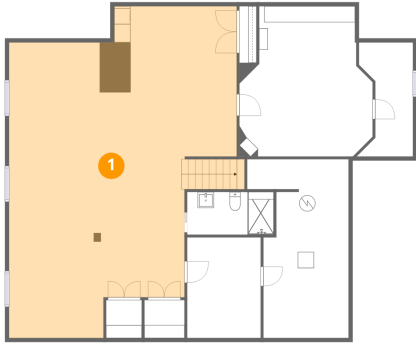
#		Dimensions	sqft	Counted as living area
19	Primary Bedroom	19'2" x 22'11"	363 sq. ft	Yes
20	W.I.C.	9'6" x 19'2"	148 sq. ft	Yes
21	Bedroom	13'4" x 13'8"	166 sq. ft	Yes
22	Primary Bath	10'10" x 14'10"	128 sq. ft	Yes
23	Bedroom	14'7" x 15'7"	211 sq. ft	Yes
24	Open To Below	8'1" x 9'7"	77 sq. ft	No
25	Bath	7'11" x 4'9"	38 sq. ft	Yes
26	Bedroom	13'5" x 12'11"	171 sq. ft	Yes
27	Bath	3'3" x 4'9"	15 sq. ft	Yes
28	Hall	27'11" x 13'9"	259 sq. ft	Yes
29	Open To Below	15'10" x 22'9"	318 sq. ft	No

Home data report

**38w535 Red Bay Court, South Elgin, Kane County, Illinois, United States, 60175**

#		Dimensions	sqft	Counted as living area
30	Bath	4'9" x 9'6"	42 sq. ft	Yes
31	Bath	5'8" x 5'4"	30 sq. ft	Yes
32	W.I.C.	5'3" x 6'4"	31 sq. ft	Yes

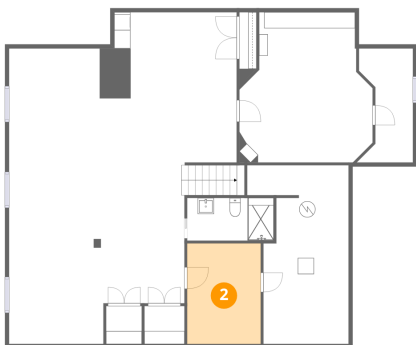
## 1 Floor 1 - Recreation Room



Dimensions: 28'4" x 36'8"  
Area: 938 sq. ft  
Counted as living area: Yes

Heated: Yes  
Finished: Yes  
Enclosed: Yes  
Contiguous: Yes  
Permitted: Yes  
Wet space: No  
Addition: No  
Conversion: No

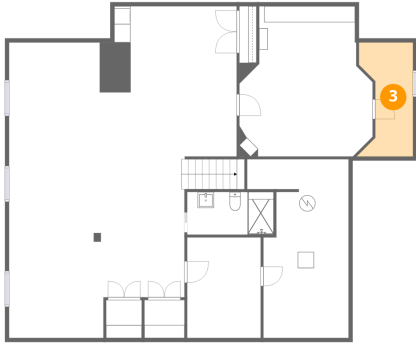
## 2 Floor 1 - Room



Dimensions: 9'2" x 12'6"  
Area: 114 sq. ft  
Counted as living area: Yes

Heated: Yes  
Finished: Yes  
Enclosed: Yes  
Contiguous: Yes  
Permitted: Yes  
Wet space: No  
Addition: No  
Conversion: No

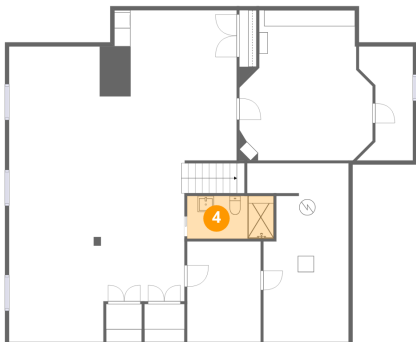
### 3 Floor 1 - Storage



Dimensions: 6'10" x 14'2"  
Area: 77 sq. ft  
Counted as living area: No

Heated: No  
Finished: No  
Enclosed: No  
Contiguous: Yes  
Permitted: Yes  
Wet space: No  
Addition: No  
Conversion: No

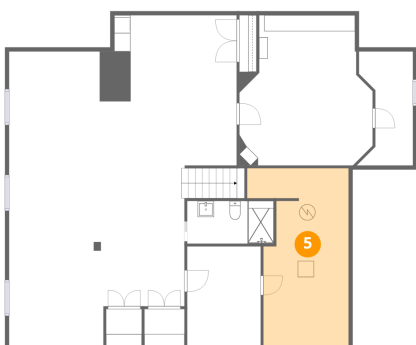
### 4 Floor 1 - Bath



Dimensions: 10'9" x 5'4"  
Area: 57 sq. ft  
Counted as living area: Yes

Heated: Yes  
Finished: Yes  
Enclosed: Yes  
Contiguous: Yes  
Permitted: Yes  
Wet space: Yes  
Addition: No  
Conversion: No

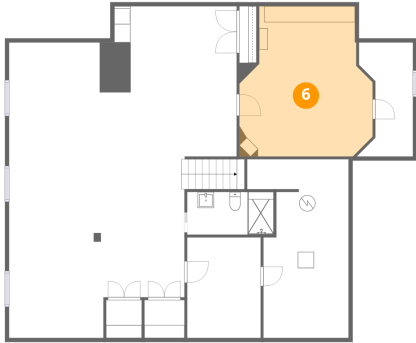
### 5 Floor 1 - Utility



Dimensions: 12'7" x 22'2"  
Area: 232 sq. ft  
Counted as living area: No

Heated: Yes  
Finished: No  
Enclosed: Yes  
Contiguous: Yes  
Permitted: Yes  
Wet space: No  
Addition: No  
Conversion: No

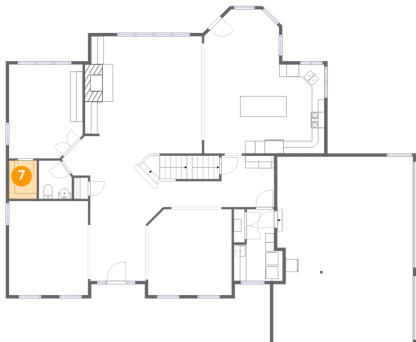
**6** Floor 1 - Media Room



Dimensions: 16'7" x 18'8"  
Area: 268 sq. ft  
Counted as living area: Yes

Heated: Yes  
Finished: Yes  
Enclosed: Yes  
Contiguous: Yes  
Permitted: Yes  
Wet space: No  
Addition: No  
Conversion: No

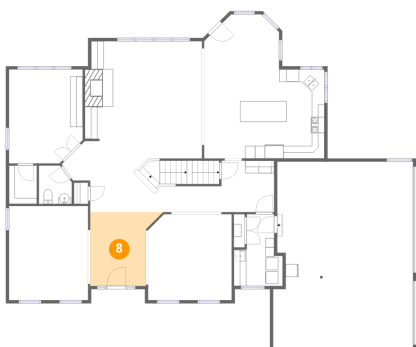
**7** Floor 2 - W.I.C.



Dimensions: 4'5" x 6'1"  
Area: 27 sq. ft  
Counted as living area: Yes

Heated: Yes  
Finished: Yes  
Enclosed: Yes  
Contiguous: Yes  
Permitted: Yes  
Wet space: No  
Addition: No  
Conversion: No

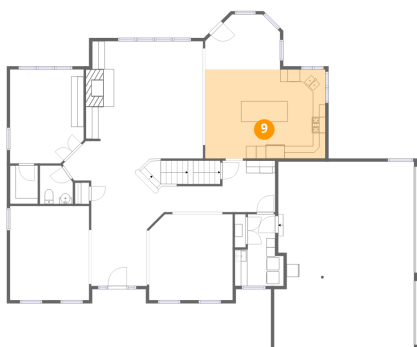
**8** Floor 2 - Foyer



Dimensions: 11'5" x 11'9"  
Area: 108 sq. ft  
Counted as living area: Yes

Heated: Yes  
Finished: Yes  
Enclosed: Yes  
Contiguous: Yes  
Permitted: Yes  
Wet space: No  
Addition: No  
Conversion: No

**9** Floor 2 - Kitchen



Dimensions: 19'2" x 14'2"  
Area: 271 sq. ft  
Counted as living area: Yes

Heated: Yes  
Finished: Yes  
Enclosed: Yes  
Contiguous: Yes  
Permitted: Yes  
Wet space: No  
Addition: No  
Conversion: No

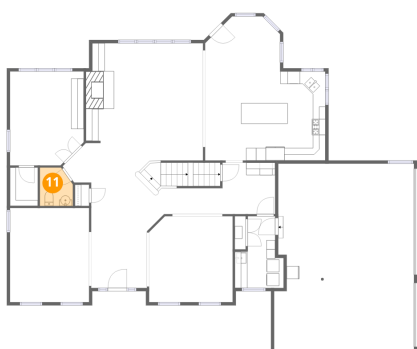
**10** Floor 2 - Garage



Dimensions: 22'3" x 29'7"  
Area: 638 sq. ft  
Counted as living area: No

Heated: No  
Finished: No  
Enclosed: Yes  
Contiguous: Yes  
Permitted: Yes  
Wet space: No  
Addition: No  
Conversion: No

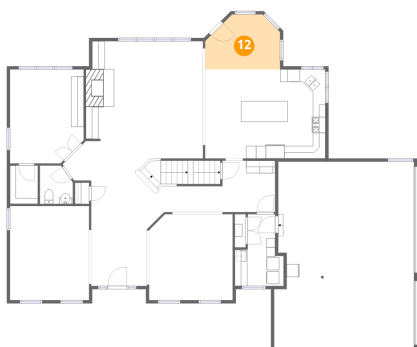
**11** Floor 2 - Bath



Dimensions: 5'3" x 6'1"  
Area: 29 sq. ft  
Counted as living area: Yes

Heated: Yes  
Finished: Yes  
Enclosed: Yes  
Contiguous: Yes  
Permitted: Yes  
Wet space: Yes  
Addition: No  
Conversion: No

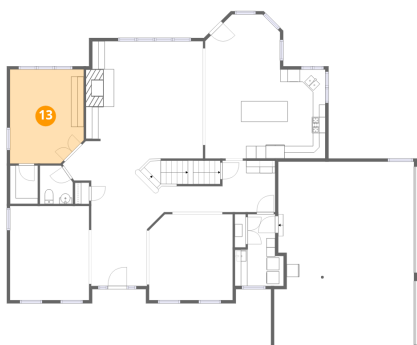
## 12 Floor 2 - Breakfast Nook



Dimensions: 11'11" x 8'9"  
Area: 91 sq. ft  
Counted as living area: Yes

Heated: Yes  
Finished: Yes  
Enclosed: Yes  
Contiguous: Yes  
Permitted: Yes  
Wet space: No  
Addition: No  
Conversion: No

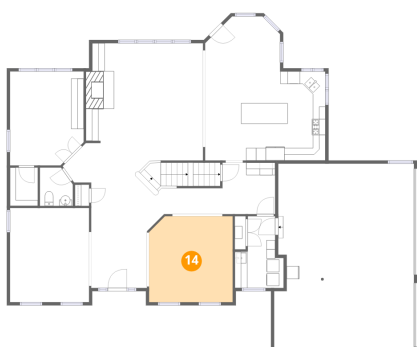
## 13 Floor 2 - Office/Bedroom



Dimensions: 11'9" x 14'11"  
Area: 169 sq. ft  
Counted as living area: Yes

Heated: Yes  
Finished: Yes  
Enclosed: Yes  
Contiguous: Yes  
Permitted: Yes  
Wet space: No  
Addition: No  
Conversion: No

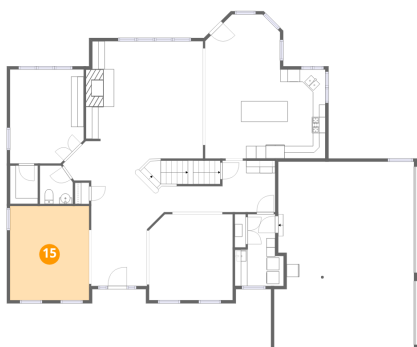
## 14 Floor 2 - Dining Room



Dimensions: 13'4" x 13'8"  
Area: 179 sq. ft  
Counted as living area: Yes

Heated: Yes  
Finished: Yes  
Enclosed: Yes  
Contiguous: Yes  
Permitted: Yes  
Wet space: No  
Addition: No  
Conversion: No

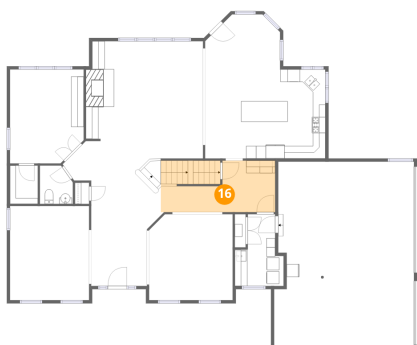
### 15 Floor 2 - Living Room



Dimensions: 12'7" x 15'0"  
Area: 189 sq. ft  
Counted as living area: Yes

Heated: Yes  
Finished: Yes  
Enclosed: Yes  
Contiguous: Yes  
Permitted: Yes  
Wet space: No  
Addition: No  
Conversion: No

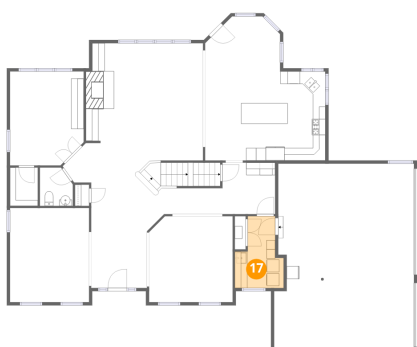
### 16 Floor 2 - Hall



Dimensions: 18'2" x 8'2"  
Area: 145 sq. ft  
Counted as living area: Yes

Heated: Yes  
Finished: Yes  
Enclosed: Yes  
Contiguous: Yes  
Permitted: Yes  
Wet space: No  
Addition: No  
Conversion: No

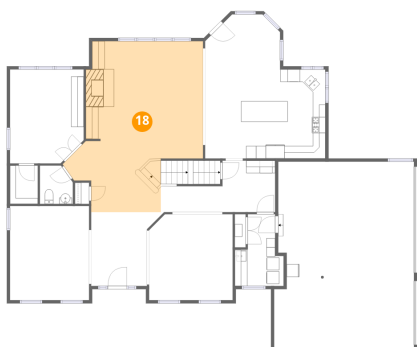
### 17 Floor 2 - Laundry



Dimensions: 7'9" x 11'5"  
Area: 68 sq. ft  
Counted as living area: Yes

Heated: Yes  
Finished: Yes  
Enclosed: Yes  
Contiguous: Yes  
Permitted: Yes  
Wet space: No  
Addition: No  
Conversion: No

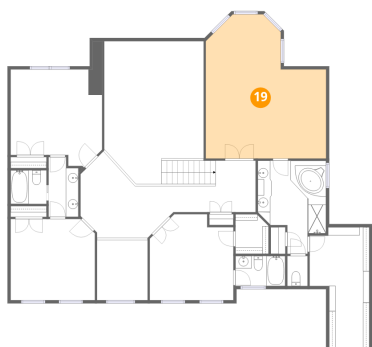
**18** Floor 2 - Family Room



Dimensions: 18'8" x 27'2"  
Area: 455 sq. ft  
Counted as living area: Yes

Heated: Yes  
Finished: Yes  
Enclosed: Yes  
Contiguous: Yes  
Permitted: Yes  
Wet space: No  
Addition: No  
Conversion: No

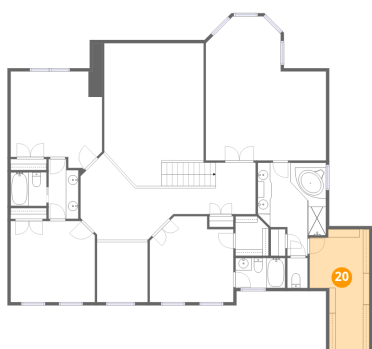
**19** Floor 3 - Primary Bedroom



Dimensions: 19'2" x 22'11"  
Area: 363 sq. ft  
Counted as living area: Yes

Heated: Yes  
Finished: Yes  
Enclosed: Yes  
Contiguous: Yes  
Permitted: Yes  
Wet space: No  
Addition: No  
Conversion: No

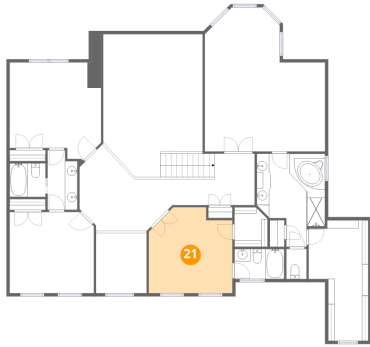
**20** Floor 3 - W.I.C.



Dimensions: 9'6" x 19'2"  
Area: 148 sq. ft  
Counted as living area: Yes

Heated: Yes  
Finished: Yes  
Enclosed: Yes  
Contiguous: Yes  
Permitted: Yes  
Wet space: No  
Addition: No  
Conversion: No

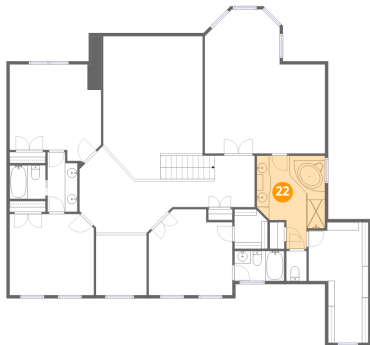
**21** Floor 3 - Bedroom



Dimensions: 13'4" x 13'8"  
Area: 166 sq. ft  
Counted as living area: Yes

Heated: Yes  
Finished: Yes  
Enclosed: Yes  
Contiguous: Yes  
Permitted: Yes  
Wet space: No  
Addition: No  
Conversion: No

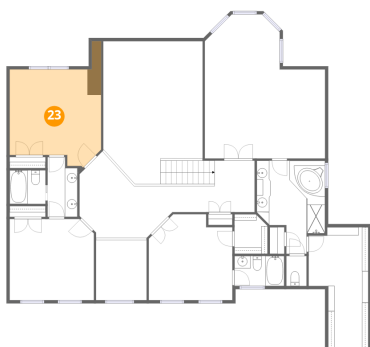
**22** Floor 3 - Primary Bath



Dimensions: 10'10" x 14'10"  
Area: 128 sq. ft  
Counted as living area: Yes

Heated: Yes  
Finished: Yes  
Enclosed: Yes  
Contiguous: Yes  
Permitted: Yes  
Wet space: Yes  
Addition: No  
Conversion: No

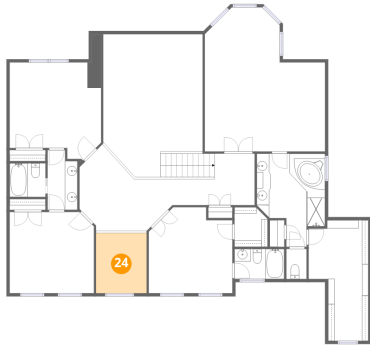
**23** Floor 3 - Bedroom



Dimensions: 14'7" x 15'7"  
Area: 211 sq. ft  
Counted as living area: Yes

Heated: Yes  
Finished: Yes  
Enclosed: Yes  
Contiguous: Yes  
Permitted: Yes  
Wet space: No  
Addition: No  
Conversion: No

**24** Floor 3 - Open To Below



Dimensions: 8'1" x 9'7"  
Area: 77 sq. ft  
Counted as living area: No

Heated: No  
Finished: No  
Enclosed: No  
Contiguous: Yes  
Permitted: No  
Wet space: No  
Addition: No  
Conversion: No

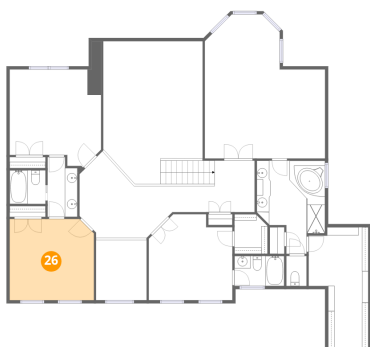
**25** Floor 3 - Bath



Dimensions: 7'11" x 4'9"  
Area: 38 sq. ft  
Counted as living area: Yes

Heated: Yes  
Finished: Yes  
Enclosed: Yes  
Contiguous: Yes  
Permitted: Yes  
Wet space: Yes  
Addition: No  
Conversion: No

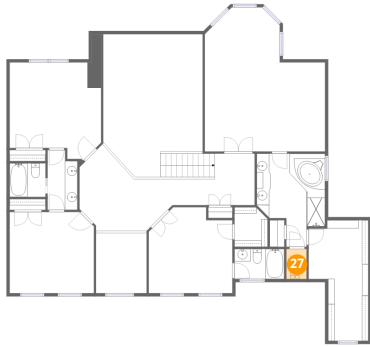
**26** Floor 3 - Bedroom



Dimensions: 13'5" x 12'11"  
Area: 171 sq. ft  
Counted as living area: Yes

Heated: Yes  
Finished: Yes  
Enclosed: Yes  
Contiguous: Yes  
Permitted: Yes  
Wet space: No  
Addition: No  
Conversion: No

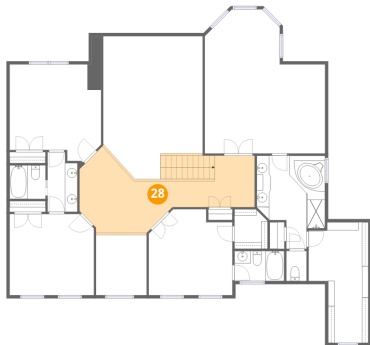
**27** Floor 3 - Bath



Dimensions: 3'3" x 4'9"  
Area: 15 sq. ft  
Counted as living area: Yes

Heated: Yes  
Finished: Yes  
Enclosed: Yes  
Contiguous: Yes  
Permitted: Yes  
Wet space: Yes  
Addition: No  
Conversion: No

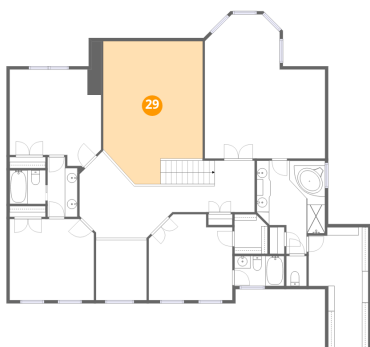
**28** Floor 3 - Hall



Dimensions: 27'11" x 13'9"  
Area: 259 sq. ft  
Counted as living area: Yes

Heated: Yes  
Finished: Yes  
Enclosed: Yes  
Contiguous: Yes  
Permitted: Yes  
Wet space: No  
Addition: No  
Conversion: No

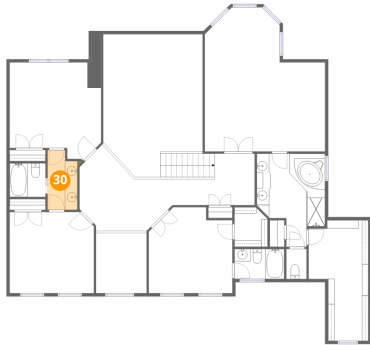
**29** Floor 3 - Open To Below



Dimensions: 15'10" x 22'9"  
Area: 318 sq. ft  
Counted as living area: No

Heated: No  
Finished: No  
Enclosed: No  
Contiguous: Yes  
Permitted: No  
Wet space: No  
Addition: No  
Conversion: No

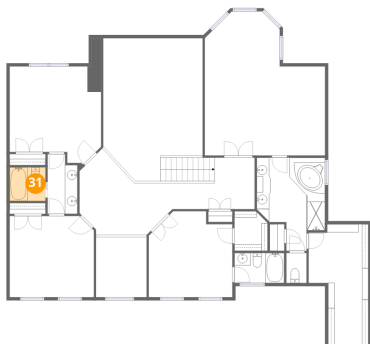
**30** Floor 3 - Bath



Dimensions: 4'9" x 9'6"  
Area: 42 sq. ft  
Counted as living area: Yes

Heated: Yes  
Finished: Yes  
Enclosed: Yes  
Contiguous: Yes  
Permitted: Yes  
Wet space: Yes  
Addition: No  
Conversion: No

**31** Floor 3 - Bath



Dimensions: 5'8" x 5'4"  
Area: 30 sq. ft  
Counted as living area: Yes

Heated: Yes  
Finished: Yes  
Enclosed: Yes  
Contiguous: Yes  
Permitted: Yes  
Wet space: Yes  
Addition: No  
Conversion: No

**32** Floor 3 - W.I.C.



Dimensions: 5'3" x 6'4"  
Area: 31 sq. ft  
Counted as living area: Yes

Heated: Yes  
Finished: Yes  
Enclosed: Yes  
Contiguous: Yes  
Permitted: Yes  
Wet space: No  
Addition: No  
Conversion: No