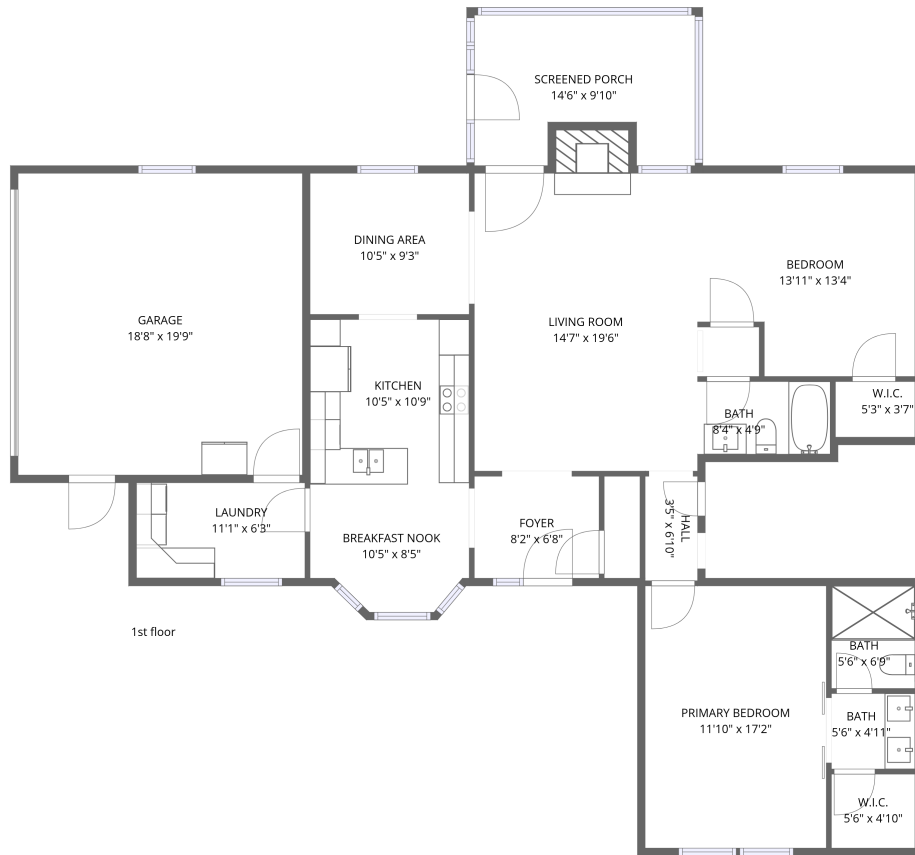


Home data report

4400 Co Rd 229, Glen St Mary, FL, US



Total Area: 1318 sq. ft

1st Floor: 1318 sq. ft

Excluded: Garage 368 sq. ft, Screened porch 126 sq. ft, Fireplace 17 sq. ft, Walls: 149 sq. ft

Property summary



1
Floors



2
Bedrooms



2
Bathrooms



1
Garages

Home data report

4400 Co Rd 229, Glen St Mary, FL, US



Room dimensions

Floor 1

Total: 1318 sqft

Excluded: 511 sqft

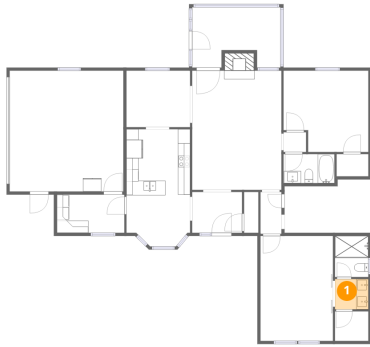
#		Dimensions	sqft	Counted as living area
1	Bath	5'6" x 4'11"	27 sq. ft	Yes
2	Laundry	11'1" x 6'3"	69 sq. ft	Yes
3	Dining Area	10'5" x 9'3"	96 sq. ft	Yes
4	Garage	18'8" x 19'9"	368 sq. ft	No
5	Bath	8'4" x 4'9"	40 sq. ft	Yes
6	Bedroom	13'11" x 13'4"	185 sq. ft	Yes
7	Kitchen	10'5" x 10'9"	112 sq. ft	Yes
8	Breakfast Nook	10'5" x 8'5"	88 sq. ft	Yes
9	Hall	3'5" x 6'10"	24 sq. ft	Yes
10	Living Room	14'7" x 19'6"	284 sq. ft	Yes
11	Primary Bedroom	11'10" x 17'2"	204 sq. ft	Yes

Home data report

4400 Co Rd 229, Glen St Mary, FL, US

#		Dimensions	sqft	Counted as living area
12	Bath	5'6" x 6'9"	37 sq. ft	Yes
13	W.I.C.	5'6" x 4'10"	27 sq. ft	Yes
14	Screened Porch	14'6" x 9'10"	143 sq. ft	No
15	W.I.C.	5'3" x 3'7"	19 sq. ft	Yes
16	Foyer	8'2" x 6'8"	55 sq. ft	Yes

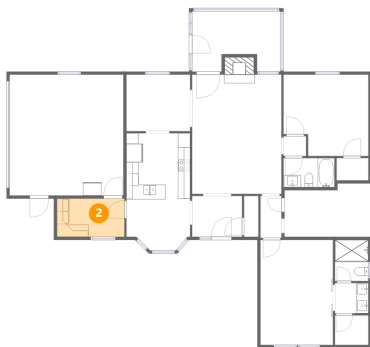
1 Floor 1 - Bath



Dimensions: 5'6" x 4'11"
Area: 27 sq. ft
Counted as living area: Yes

Heated: Yes
Finished: Yes
Enclosed: Yes
Contiguous: Yes
Permitted: Yes
Wet space: Yes
Addition: No
Conversion: No

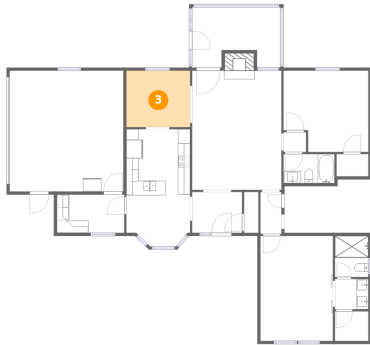
2 Floor 1 - Laundry



Dimensions: 11'1" x 6'3"
Area: 69 sq. ft
Counted as living area: Yes

Heated: Yes
Finished: Yes
Enclosed: Yes
Contiguous: Yes
Permitted: Yes
Wet space: No
Addition: No
Conversion: No

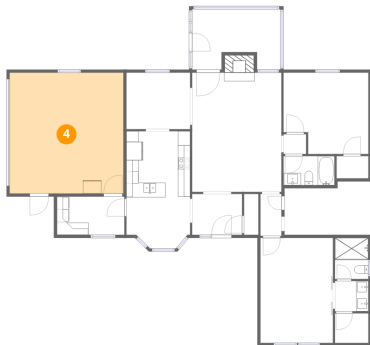
3 Floor 1 - Dining Area



Dimensions: 10'5" x 9'3"
Area: 96 sq. ft
Counted as living area: Yes

Heated: Yes
Finished: Yes
Enclosed: Yes
Contiguous: Yes
Permitted: Yes
Wet space: No
Addition: No
Conversion: No

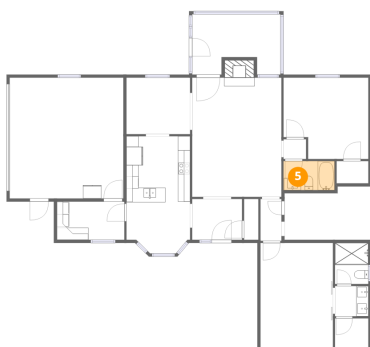
4 Floor 1 - Garage



Dimensions: 18'8" x 19'9"
Area: 368 sq. ft
Counted as living area: No

Heated: No
Finished: No
Enclosed: Yes
Contiguous: Yes
Permitted: Yes
Wet space: No
Addition: No
Conversion: No

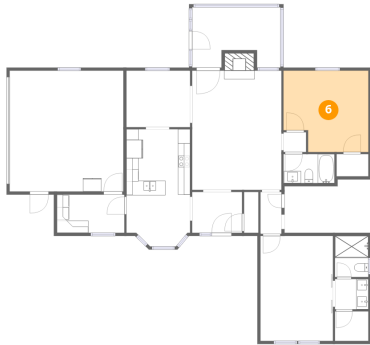
5 Floor 1 - Bath



Dimensions: 8'4" x 4'9"
Area: 40 sq. ft
Counted as living area: Yes

Heated: Yes
Finished: Yes
Enclosed: Yes
Contiguous: Yes
Permitted: Yes
Wet space: Yes
Addition: No
Conversion: No

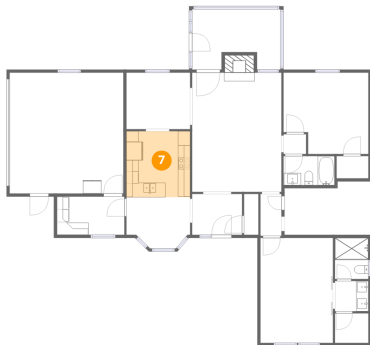
6 Floor 1 - Bedroom



Dimensions: 13'11" x 13'4"
Area: 185 sq. ft
Counted as living area: Yes

Heated: Yes
Finished: Yes
Enclosed: Yes
Contiguous: Yes
Permitted: Yes
Wet space: No
Addition: No
Conversion: No

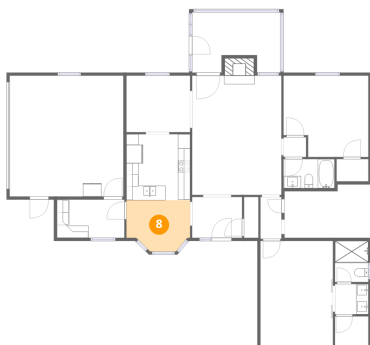
7 Floor 1 - Kitchen



Dimensions: 10'5" x 10'9"
Area: 112 sq. ft
Counted as living area: Yes

Heated: Yes
Finished: Yes
Enclosed: Yes
Contiguous: Yes
Permitted: Yes
Wet space: No
Addition: No
Conversion: No

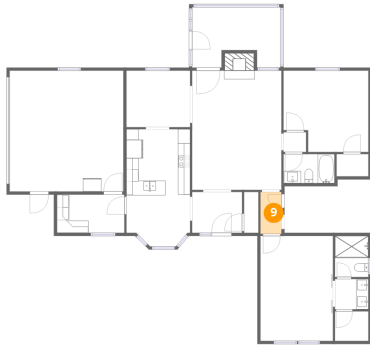
8 Floor 1 - Breakfast Nook



Dimensions: 10'5" x 8'5"
Area: 88 sq. ft
Counted as living area: Yes

Heated: Yes
Finished: Yes
Enclosed: Yes
Contiguous: Yes
Permitted: Yes
Wet space: No
Addition: No
Conversion: No

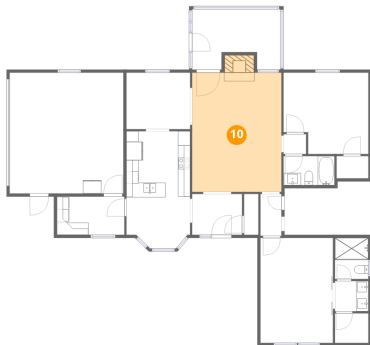
9 Floor 1 - Hall



Dimensions: 3'5" x 6'10"
Area: 24 sq. ft
Counted as living area: Yes

Heated: Yes
Finished: Yes
Enclosed: Yes
Contiguous: Yes
Permitted: Yes
Wet space: No
Addition: No
Conversion: No

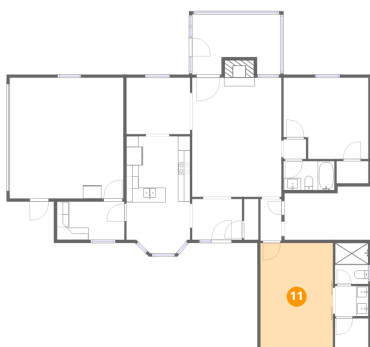
10 Floor 1 - Living Room



Dimensions: 14'7" x 19'6"
Area: 284 sq. ft
Counted as living area: Yes

Heated: Yes
Finished: Yes
Enclosed: Yes
Contiguous: Yes
Permitted: Yes
Wet space: No
Addition: No
Conversion: No

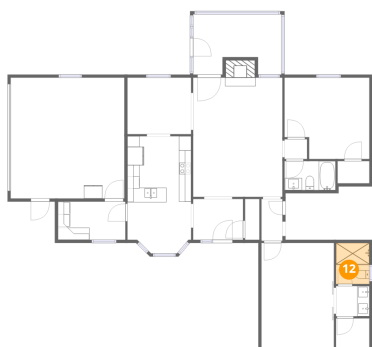
11 Floor 1 - Primary Bedroom



Dimensions: 11'10" x 17'2"
Area: 204 sq. ft
Counted as living area: Yes

Heated: Yes
Finished: Yes
Enclosed: Yes
Contiguous: Yes
Permitted: Yes
Wet space: No
Addition: No
Conversion: No

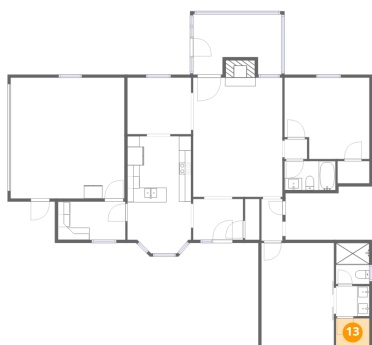
12 Floor 1 - Bath



Dimensions: 5'6" x 6'9"
Area: 37 sq. ft
Counted as living area: Yes

Heated: Yes
Finished: Yes
Enclosed: Yes
Contiguous: Yes
Permitted: Yes
Wet space: Yes
Addition: No
Conversion: No

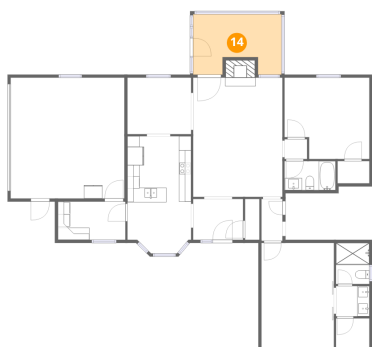
13 Floor 1 - W.I.C.



Dimensions: 5'6" x 4'10"
Area: 27 sq. ft
Counted as living area: Yes

Heated: Yes
Finished: Yes
Enclosed: Yes
Contiguous: Yes
Permitted: Yes
Wet space: No
Addition: No
Conversion: No

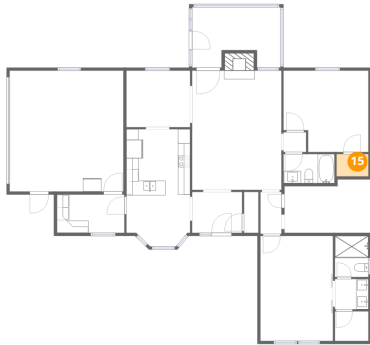
14 Floor 1 - Screened Porch



Dimensions: 14'6" x 9'10"
Area: 143 sq. ft
Counted as living area: No

Heated: No
Finished: No
Enclosed: No
Contiguous: Yes
Permitted: Yes
Wet space: No
Addition: No
Conversion: No

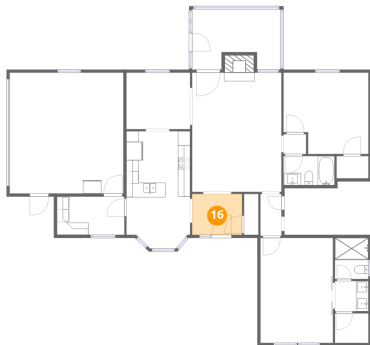
15 Floor 1 - W.I.C.



Dimensions: 5'3" x 3'7"
Area: 19 sq. ft
Counted as living area: Yes

Heated: Yes
Finished: Yes
Enclosed: Yes
Contiguous: Yes
Permitted: Yes
Wet space: No
Addition: No
Conversion: No

16 Floor 1 - Foyer



Dimensions: 8'2" x 6'8"
Area: 55 sq. ft
Counted as living area: Yes

Heated: Yes
Finished: Yes
Enclosed: Yes
Contiguous: Yes
Permitted: Yes
Wet space: No
Addition: No
Conversion: No