

Home data report

2057 Cutting Horse Dr, Fort Collins, CO, US



Total Area: 5364 sq. ft

Basement: 1386 sq. ft, 1st Floor: 1878 sq. ft, 2nd Floor: 2100 sq. ft

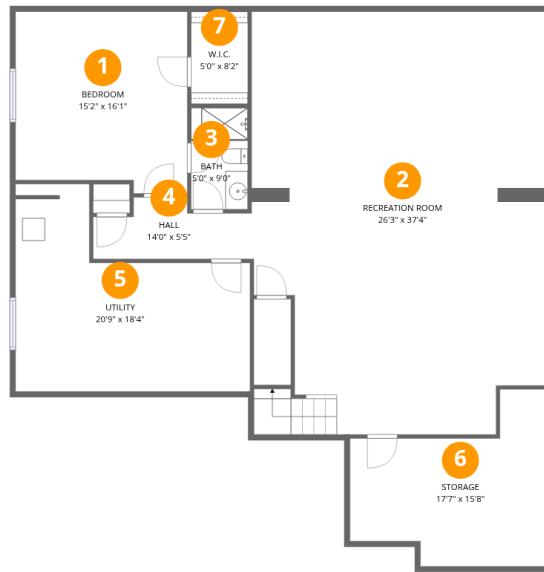
Excluded: Storage 203 sq. ft, Utility 281 sq. ft, Garage 890 sq. ft, Covered patio 272 sq. ft, Open to below 171 sq. ft, Walls: 345 sq. ft

Property summary



Home data report

2057 Cutting Horse Dr, Fort Collins, CO, US



Room dimensions

Floor 1 Below grade

Total: 1386 sqft

Excluded: 484 sqft

#		Dimensions	sqft	Counted as living area
1	Bedroom	15'2" x 16'1"	232 sq. ft	Yes
2	Recreation Room	26'3" x 37'4"	927 sq. ft	Yes
3	Bath	5'0" x 9'0"	45 sq. ft	Yes
4	Hall	14'0" x 5'5"	62 sq. ft	Yes
5	Utility	20'9" x 18'4"	280 sq. ft	No
6	Storage	17'7" x 15'8"	203 sq. ft	No
7	W.I.C.	5'0" x 8'2"	41 sq. ft	Yes



Room dimensions

Floor 2

Total: 1878sqft

Excluded: 1162sqft

#		Dimensions	sqft	Counted as living area
8	W.I.C.	8'9" x 5'2"	45 sq. ft	Yes
9	Foyer	5'11" x 9'5"	56 sq. ft	Yes
10	Bath	7'11" x 5'2"	41 sq. ft	Yes
11	Hall	6'5" x 4'8"	29 sq. ft	Yes
12	Garage	39'11" x 26'7"	890 sq. ft	No
13	Kitchen	14'1" x 16'2"	227 sq. ft	Yes
14	Living Room	26'5" x 16'8"	427 sq. ft	Yes
15	Covered Patio	24'10" x 10'11"	272 sq. ft	No
16	Office	6'4" x 16'0"	89 sq. ft	Yes
17	Hall	14'4" x 20'8"	262 sq. ft	Yes
18	Hall	9'0" x 11'8"	69 sq. ft	Yes

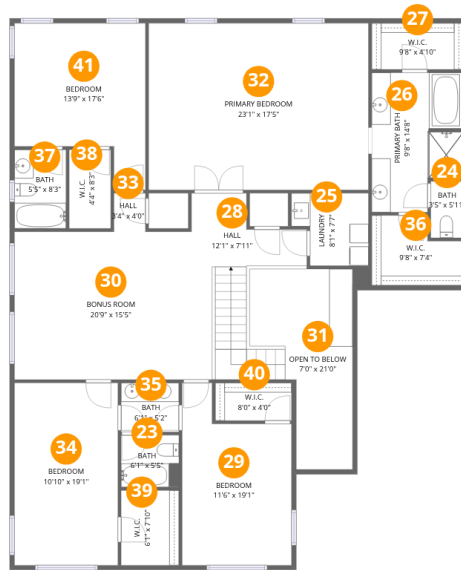
Home data report

2057 Cutting Horse Dr, Fort Collins, CO, US

#		Dimensions	sqft	Counted as living area
19	Office	11'4" x 15'1"	171 sq. ft	Yes
20	Pantry	7'2" x 4'0"	29 sq. ft	Yes
21	Bedroom	13'9" x 11'8"	148 sq. ft	Yes
22	Dining Area	14'0" x 12'8"	177 sq. ft	Yes

Home data report

2057 Cutting Horse Dr, Fort Collins, CO, US



Room dimensions

Floor 3

Total: 2100 sqft

Excluded: 171 sqft

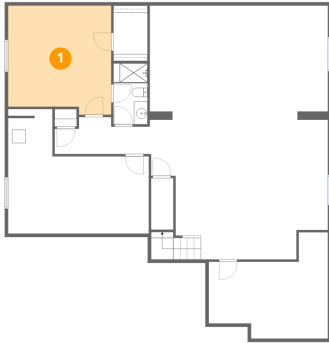
#		Dimensions	sqft	Counted as living area
23	Bath	6'1" x 5'5"	33 sq. ft	Yes
24	Bath	3'5" x 5'11"	20 sq. ft	Yes
25	Laundry	8'1" x 7'7"	53 sq. ft	Yes
26	Primary Bath	9'8" x 14'8"	126 sq. ft	Yes
27	W.I.C.	9'8" x 4'10"	47 sq. ft	Yes
28	Hall	12'1" x 7'11"	72 sq. ft	Yes
29	Bedroom	11'6" x 19'1"	184 sq. ft	Yes
30	Bonus Room	20'9" x 15'5"	372 sq. ft	Yes
31	Open To Below	7'0" x 21'0"	171 sq. ft	No
32	Primary Bedroom	23'1" x 17'5"	403 sq. ft	Yes
33	Hall	3'4" x 4'0"	13 sq. ft	Yes

Home data report

2057 Cutting Horse Dr, Fort Collins, CO, US

#		Dimensions	sqft	Counted as living area
34	Bedroom	10'10" x 19'1"	208 sq. ft	Yes
35	Bath	6'1" x 5'2"	31 sq. ft	Yes
36	W.I.C.	9'8" x 7'4"	61 sq. ft	Yes
37	Bath	5'5" x 8'3"	45 sq. ft	Yes
38	W.I.C.	4'4" x 8'3"	36 sq. ft	Yes
39	W.I.C.	6'1" x 7'10"	48 sq. ft	Yes
40	W.I.C.	8'0" x 4'0"	32 sq. ft	Yes
41	Bedroom	13'9" x 17'6"	193 sq. ft	Yes

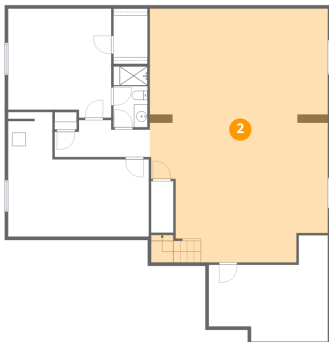
1 Floor 1 - Bedroom



Dimensions: 15'2" x 16'1"
Area: 232 sq. ft
Counted as living area: Yes

Heated: Yes
Finished: Yes
Enclosed: Yes
Contiguous: Yes
Permitted: Yes
Wet space: No
Addition: No
Conversion: No

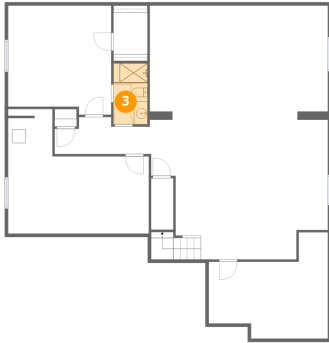
2 Floor 1 - Recreation Room



Dimensions: 26'3" x 37'4"
Area: 927 sq. ft
Counted as living area: Yes

Heated: Yes
Finished: Yes
Enclosed: Yes
Contiguous: Yes
Permitted: Yes
Wet space: No
Addition: No
Conversion: No

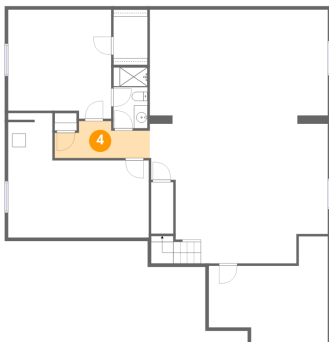
3 Floor 1 - Bath



Dimensions: 5'0" x 9'0"
Area: 45 sq. ft
Counted as living area: Yes

Heated: Yes
Finished: Yes
Enclosed: Yes
Contiguous: Yes
Permitted: Yes
Wet space: Yes
Addition: No
Conversion: No

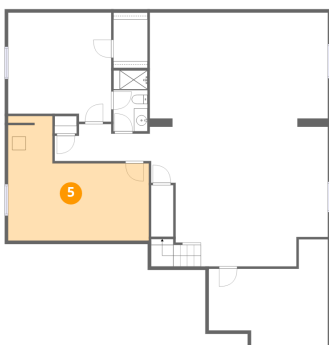
4 Floor 1 - Hall



Dimensions: 14'0" x 5'5"
Area: 62 sq. ft
Counted as living area: Yes

Heated: Yes
Finished: Yes
Enclosed: Yes
Contiguous: Yes
Permitted: Yes
Wet space: No
Addition: No
Conversion: No

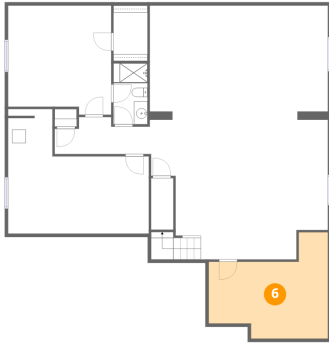
5 Floor 1 - Utility



Dimensions: 20'9" x 18'4"
Area: 280 sq. ft
Counted as living area: No

Heated: Yes
Finished: No
Enclosed: Yes
Contiguous: Yes
Permitted: Yes
Wet space: No
Addition: No
Conversion: No

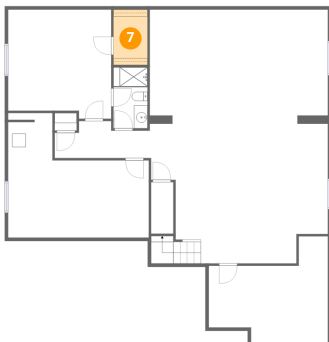
6 Floor 1 - Storage



Dimensions: 17'7" x 15'8"
Area: 203 sq. ft
Counted as living area: No

Heated: No
Finished: No
Enclosed: No
Contiguous: Yes
Permitted: Yes
Wet space: No
Addition: No
Conversion: No

7 Floor 1 - W.I.C.



Dimensions: 5'0" x 8'2"
Area: 41 sq. ft
Counted as living area: Yes

Heated: Yes
Finished: Yes
Enclosed: Yes
Contiguous: Yes
Permitted: Yes
Wet space: No
Addition: No
Conversion: No

8 Floor 2 - W.I.C.



Dimensions: 8'9" x 5'2"
Area: 45 sq. ft
Counted as living area: Yes

Heated: Yes
Finished: Yes
Enclosed: Yes
Contiguous: Yes
Permitted: Yes
Wet space: No
Addition: No
Conversion: No

9 Floor 2 - Foyer



Dimensions: 5'11" x 9'5"
Area: 56 sq. ft
Counted as living area: Yes

Heated: Yes
Finished: Yes
Enclosed: Yes
Contiguous: Yes
Permitted: Yes
Wet space: No
Addition: No
Conversion: No

10 Floor 2 - Bath



Dimensions: 7'11" x 5'2"
Area: 41 sq. ft
Counted as living area: Yes

Heated: Yes
Finished: Yes
Enclosed: Yes
Contiguous: Yes
Permitted: Yes
Wet space: Yes
Addition: No
Conversion: No

11 Floor 2 - Hall



Dimensions: 6'5" x 4'8"
Area: 29 sq. ft
Counted as living area: Yes

Heated: Yes
Finished: Yes
Enclosed: Yes
Contiguous: Yes
Permitted: Yes
Wet space: No
Addition: No
Conversion: No

12 Floor 2 - Garage



Dimensions: 39'11" x 26'7"

Area: 890 sq. ft

Counted as living area: No

Heated: No

Finished: No

Enclosed: Yes

Contiguous: Yes

Permitted: Yes

Wet space: No

Addition: No

Conversion: No

13 Floor 2 - Kitchen



Dimensions: 14'1" x 16'2"

Area: 227 sq. ft

Counted as living area: Yes

Heated: Yes

Finished: Yes

Enclosed: Yes

Contiguous: Yes

Permitted: Yes

Wet space: No

Addition: No

Conversion: No

14 Floor 2 - Living Room



Dimensions: 26'5" x 16'8"

Area: 427 sq. ft

Counted as living area: Yes

Heated: Yes

Finished: Yes

Enclosed: Yes

Contiguous: Yes

Permitted: Yes

Wet space: No

Addition: No

Conversion: No

15 Floor 2 - Covered Patio



Dimensions: 24'10" x 10'11"
Area: 272 sq. ft
Counted as living area: No

Heated: No
Finished: No
Enclosed: No
Contiguous: Yes
Permitted: Yes
Wet space: No
Addition: No
Conversion: No

16 Floor 2 - Office



Dimensions: 6'4" x 16'0"
Area: 89 sq. ft
Counted as living area: Yes

Heated: Yes
Finished: Yes
Enclosed: Yes
Contiguous: Yes
Permitted: Yes
Wet space: No
Addition: No
Conversion: No

17 Floor 2 - Hall



Dimensions: 14'4" x 20'8"
Area: 262 sq. ft
Counted as living area: Yes

Heated: Yes
Finished: Yes
Enclosed: Yes
Contiguous: Yes
Permitted: Yes
Wet space: No
Addition: No
Conversion: No

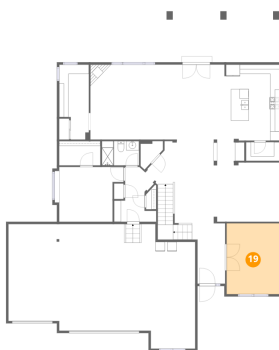
18 Floor 2 - Hall



Dimensions: 9'0" x 11'8"
Area: 69 sq. ft
Counted as living area: Yes

Heated: Yes
Finished: Yes
Enclosed: Yes
Contiguous: Yes
Permitted: Yes
Wet space: No
Addition: No
Conversion: No

19 Floor 2 - Office



Dimensions: 11'4" x 15'1"
Area: 171 sq. ft
Counted as living area: Yes

Heated: Yes
Finished: Yes
Enclosed: Yes
Contiguous: Yes
Permitted: Yes
Wet space: No
Addition: No
Conversion: No

20 Floor 2 - Pantry



Dimensions: 7'2" x 4'0"
Area: 29 sq. ft
Counted as living area: Yes

Heated: Yes
Finished: Yes
Enclosed: Yes
Contiguous: Yes
Permitted: Yes
Wet space: No
Addition: No
Conversion: No

21 Floor 2 - Bedroom



Dimensions: 13'9" x 11'8"
Area: 148 sq. ft
Counted as living area: Yes

Heated: Yes
Finished: Yes
Enclosed: Yes
Contiguous: Yes
Permitted: Yes
Wet space: No
Addition: No
Conversion: No

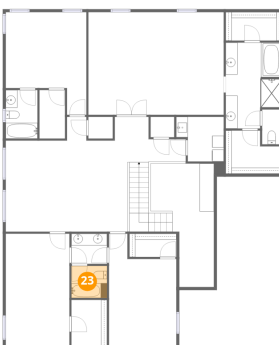
22 Floor 2 - Dining Area



Dimensions: 14'0" x 12'8"
Area: 177 sq. ft
Counted as living area: Yes

Heated: Yes
Finished: Yes
Enclosed: Yes
Contiguous: Yes
Permitted: Yes
Wet space: No
Addition: No
Conversion: No

23 Floor 3 - Bath



Dimensions: 6'1" x 5'5"
Area: 33 sq. ft
Counted as living area: Yes

Heated: Yes
Finished: Yes
Enclosed: Yes
Contiguous: Yes
Permitted: Yes
Wet space: Yes
Addition: No
Conversion: No

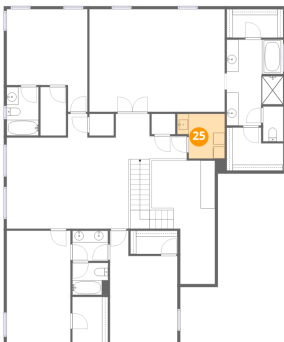
24 Floor 3 - Bath



Dimensions: 3'5" x 5'11"
Area: 20 sq. ft
Counted as living area: Yes

Heated: Yes
Finished: Yes
Enclosed: Yes
Contiguous: Yes
Permitted: Yes
Wet space: Yes
Addition: No
Conversion: No

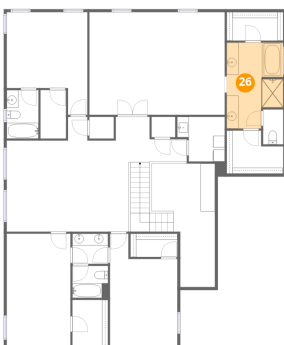
25 Floor 3 - Laundry



Dimensions: 8'1" x 7'7"
Area: 53 sq. ft
Counted as living area: Yes

Heated: Yes
Finished: Yes
Enclosed: Yes
Contiguous: Yes
Permitted: Yes
Wet space: No
Addition: No
Conversion: No

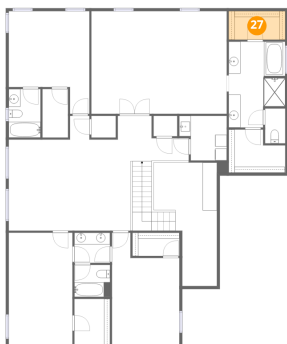
26 Floor 3 - Primary Bath



Dimensions: 9'8" x 14'8"
Area: 126 sq. ft
Counted as living area: Yes

Heated: Yes
Finished: Yes
Enclosed: Yes
Contiguous: Yes
Permitted: Yes
Wet space: Yes
Addition: No
Conversion: No

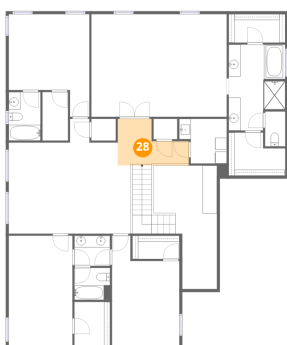
27 Floor 3 - W.I.C.



Dimensions: 9'8" x 4'10"
Area: 47 sq. ft
Counted as living area: Yes

Heated: Yes
Finished: Yes
Enclosed: Yes
Contiguous: Yes
Permitted: Yes
Wet space: No
Addition: No
Conversion: No

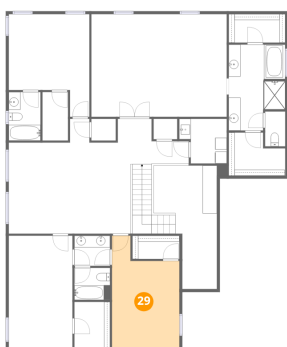
28 Floor 3 - Hall



Dimensions: 12'1" x 7'11"
Area: 72 sq. ft
Counted as living area: Yes

Heated: Yes
Finished: Yes
Enclosed: Yes
Contiguous: Yes
Permitted: Yes
Wet space: No
Addition: No
Conversion: No

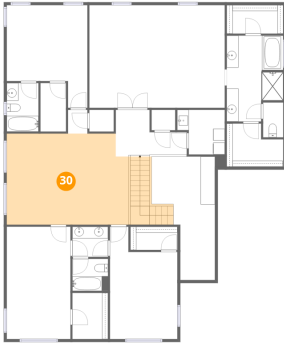
29 Floor 3 - Bedroom



Dimensions: 11'6" x 19'1"
Area: 184 sq. ft
Counted as living area: Yes

Heated: Yes
Finished: Yes
Enclosed: Yes
Contiguous: Yes
Permitted: Yes
Wet space: No
Addition: No
Conversion: No

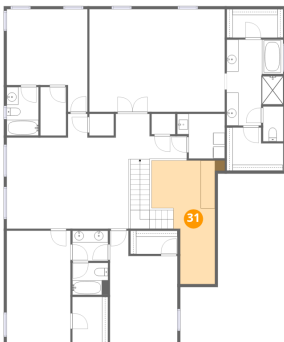
30 Floor 3 - Bonus Room



Dimensions: 20'9" x 15'5"
Area: 372 sq. ft
Counted as living area: Yes

Heated: Yes
Finished: Yes
Enclosed: Yes
Contiguous: Yes
Permitted: Yes
Wet space: No
Addition: No
Conversion: No

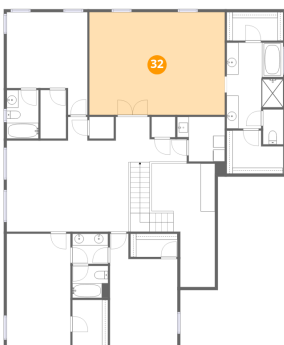
31 Floor 3 - Open To Below



Dimensions: 7'0" x 21'0"
Area: 171 sq. ft
Counted as living area: No

Heated: No
Finished: No
Enclosed: No
Contiguous: Yes
Permitted: No
Wet space: No
Addition: No
Conversion: No

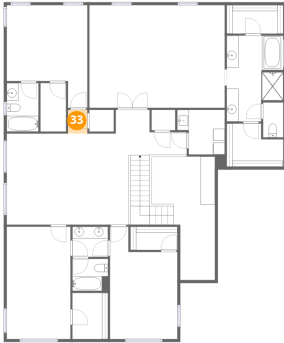
32 Floor 3 - Primary Bedroom



Dimensions: 23'1" x 17'5"
Area: 403 sq. ft
Counted as living area: Yes

Heated: Yes
Finished: Yes
Enclosed: Yes
Contiguous: Yes
Permitted: Yes
Wet space: No
Addition: No
Conversion: No

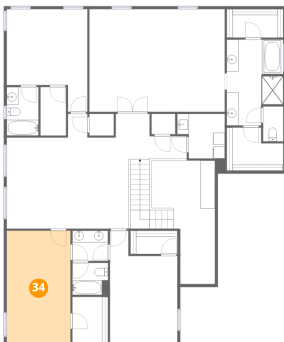
33 Floor 3 - Hall



Dimensions: 3'4" x 4'0"
Area: 13 sq. ft
Counted as living area: Yes

Heated: Yes
Finished: Yes
Enclosed: Yes
Contiguous: Yes
Permitted: Yes
Wet space: No
Addition: No
Conversion: No

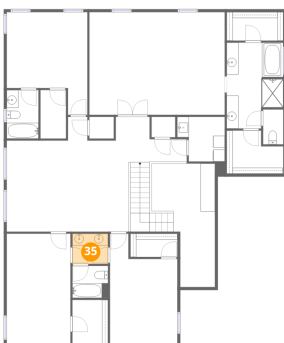
34 Floor 3 - Bedroom



Dimensions: 10'10" x 19'1"
Area: 208 sq. ft
Counted as living area: Yes

Heated: Yes
Finished: Yes
Enclosed: Yes
Contiguous: Yes
Permitted: Yes
Wet space: No
Addition: No
Conversion: No

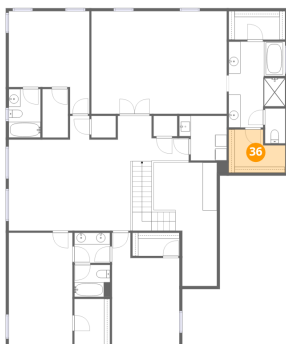
35 Floor 3 - Bath



Dimensions: 6'1" x 5'2"
Area: 31 sq. ft
Counted as living area: Yes

Heated: Yes
Finished: Yes
Enclosed: Yes
Contiguous: Yes
Permitted: Yes
Wet space: Yes
Addition: No
Conversion: No

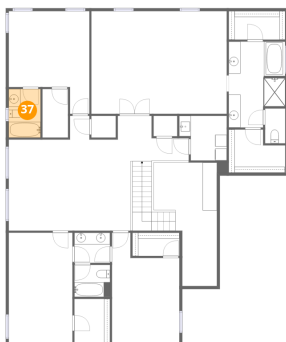
36 Floor 3 - W.I.C.



Dimensions: 9'8" x 7'4"
Area: 61 sq. ft
Counted as living area: Yes

Heated: Yes
Finished: Yes
Enclosed: Yes
Contiguous: Yes
Permitted: Yes
Wet space: No
Addition: No
Conversion: No

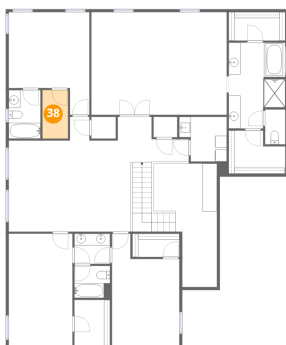
37 Floor 3 - Bath



Dimensions: 5'5" x 8'3"
Area: 45 sq. ft
Counted as living area: Yes

Heated: Yes
Finished: Yes
Enclosed: Yes
Contiguous: Yes
Permitted: Yes
Wet space: Yes
Addition: No
Conversion: No

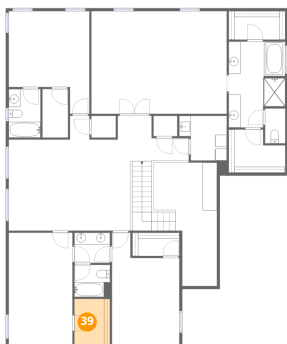
38 Floor 3 - W.I.C.



Dimensions: 4'4" x 8'3"
Area: 36 sq. ft
Counted as living area: Yes

Heated: Yes
Finished: Yes
Enclosed: Yes
Contiguous: Yes
Permitted: Yes
Wet space: No
Addition: No
Conversion: No

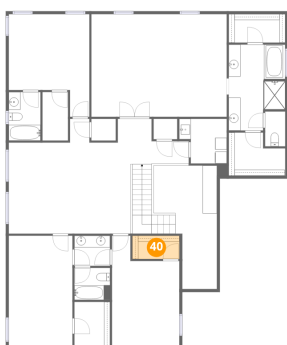
39 Floor 3 - W.I.C.



Dimensions: 6'1" x 7'10"
Area: 48 sq. ft
Counted as living area: Yes

Heated: Yes
Finished: Yes
Enclosed: Yes
Contiguous: Yes
Permitted: Yes
Wet space: No
Addition: No
Conversion: No

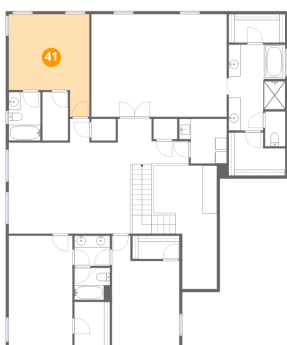
40 Floor 3 - W.I.C.



Dimensions: 8'0" x 4'0"
Area: 32 sq. ft
Counted as living area: Yes

Heated: Yes
Finished: Yes
Enclosed: Yes
Contiguous: Yes
Permitted: Yes
Wet space: No
Addition: No
Conversion: No

41 Floor 3 - Bedroom



Dimensions: 13'9" x 17'6"
Area: 193 sq. ft
Counted as living area: Yes

Heated: Yes
Finished: Yes
Enclosed: Yes
Contiguous: Yes
Permitted: Yes
Wet space: No
Addition: No
Conversion: No