

Home data report

411 Lake Avenue, Wilmette, Cook County, Illinois, United States, 60091



Total Area: 4935 sq. ft

Basement: 1124 sq. ft, 1st Floor: 2012 sq. ft, 2nd Floor: 1799 sq. ft

Excluded: Utility 134 sq. ft, Storage 55 sq. ft, Undefined 10 sq. ft, Patio 1127 sq. ft, Fireplace 14 sq. ft, Walls: 285 sq. ft

Property summary

 **3** Floors

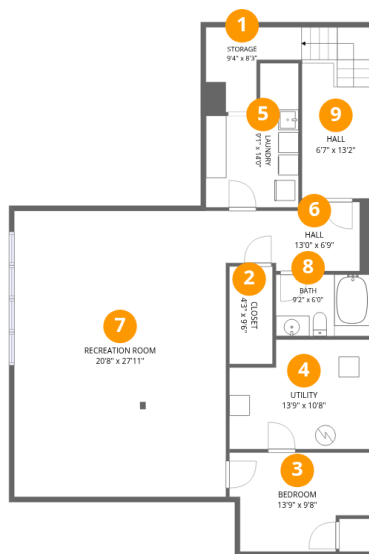
 **6** Bedrooms

 **5** Bathrooms

 **1** Half baths

Home data report

411 Lake Avenue, Wilmette, Cook County, Illinois, United States, 60091



Room dimensions

Floor 1 Below grade

Total:1124sqft

Excluded: 199sqft

#		Dimensions	sqft	Counted as living area
1	Storage	9'4" x 8'3"	55 sq. ft	No
2	Closet	4'3" x 9'6"	40 sq. ft	Yes
3	Bedroom	13'9" x 9'8"	115 sq. ft	Yes
4	Utility	13'9" x 10'8"	134 sq. ft	No
5	Laundry	9'1" x 14'0"	100 sq. ft	Yes
6	Hall	13'0" x 6'9"	84 sq. ft	Yes
7	Recreation Room	20'8" x 27'11"	577 sq. ft	Yes
8	Bath	9'2" x 6'0"	55 sq. ft	Yes
9	Hall	6'7" x 13'2"	111 sq. ft	Yes

Home data report

411 Lake Avenue, Wilmette, Cook County, Illinois, United States, 60091



Room dimensions

Floor 2

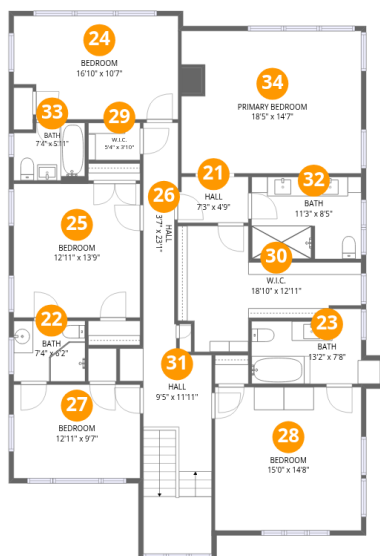
Total:2012sqft

Excluded: 1141sqft

#		Dimensions	sqft	Counted as living area
10	Entry	5'0" x 4'6"	75 sq. ft	Yes
11	Patio	24'8" x 42'5"	1033 sq. ft	No
12	Patio	16'6" x 10'9"	94 sq. ft	No
13	Sun ROOM/OFFICE	17'5" x 16'0"	215 sq. ft	Yes
14	Foyer	8'4" x 4'10"	40 sq. ft	Yes
15	Dining Room	21'7" x 20'4"	382 sq. ft	Yes
16	Bath	3'4" x 8'7"	29 sq. ft	Yes
17	Family Room	19'3" x 18'6"	321 sq. ft	Yes
18	Breakfast Area	17'11" x 14'6"	189 sq. ft	Yes
19	Kitchen	18'5" x 17'4"	276 sq. ft	Yes
20	Living Room	13'9" x 30'0"	423 sq. ft	Yes

Home data report

411 Lake Avenue, Wilmette, Cook County, Illinois, United States, 60091



Room dimensions

Floor 3

Total:1799sqft Excluded: 0sqft

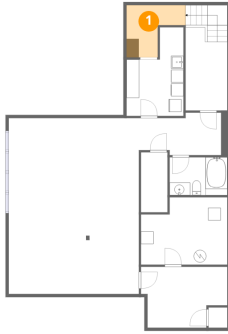
#		Dimensions	sqft	Counted as living area
21	Hall	7'3" x 4'9"	34 sq. ft	Yes
22	Bath	7'4" x 6'2"	45 sq. ft	Yes
23	Bath	13'2" x 7'8"	81 sq. ft	Yes
24	Bedroom	16'10" x 10'7"	170 sq. ft	Yes
25	Bedroom	12'11" x 13'9"	178 sq. ft	Yes
26	Hall	3'7" x 23'1"	77 sq. ft	Yes
27	Bedroom	12'11" x 9'7"	124 sq. ft	Yes
28	Bedroom	15'0" x 14'8"	220 sq. ft	Yes
29	W.I.C.	5'4" x 3'10"	20 sq. ft	Yes
30	W.I.C.	18'10" x 12'11"	150 sq. ft	Yes
31	Hall	9'5" x 11'11"	153 sq. ft	Yes

Home data report

**411 Lake Avenue, Wilmette, Cook County, Illinois, United States,
60091**

#		Dimensions	sqft	Counted as living area
32	Bath	11'3" x 8'5"	94 sq. ft	Yes
33	Bath	7'4" x 5'11"	41 sq. ft	Yes
34	Primary Bedroom	18'5" x 14'7"	261 sq. ft	Yes

1 Floor 1 - Storage



Dimensions: 9'4" x 8'3"
Area: 55 sq. ft
Counted as living area: No

Heated: No
Finished: No
Enclosed: No
Contiguous: No
Permitted: Yes
Wet space: No
Addition: No
Conversion: No

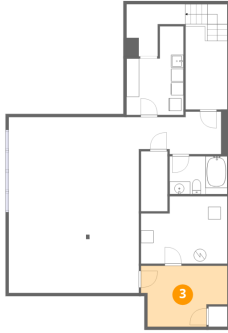
2 Floor 1 - Closet



Dimensions: 4'3" x 9'6"
Area: 40 sq. ft
Counted as living area: Yes

Heated: Yes
Finished: Yes
Enclosed: Yes
Contiguous: Yes
Permitted: Yes
Wet space: No
Addition: No
Conversion: No

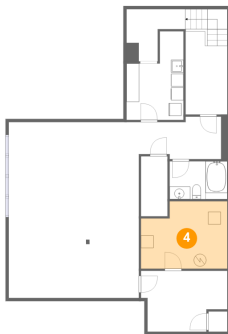
3 Floor 1 - Bedroom



Dimensions: 13'9" x 9'8"
Area: 115 sq. ft
Counted as living area: Yes

Heated: Yes
Finished: Yes
Enclosed: Yes
Contiguous: Yes
Permitted: Yes
Wet space: No
Addition: No
Conversion: No

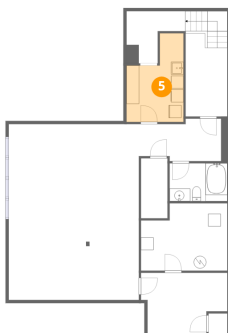
4 Floor 1 - Utility



Dimensions: 13'9" x 10'8"
Area: 134 sq. ft
Counted as living area: No

Heated: Yes
Finished: No
Enclosed: Yes
Contiguous: Yes
Permitted: Yes
Wet space: No
Addition: No
Conversion: No

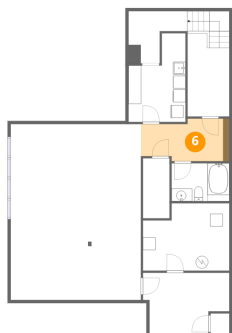
5 Floor 1 - Laundry



Dimensions: 9'1" x 14'0"
Area: 100 sq. ft
Counted as living area: Yes

Heated: Yes
Finished: Yes
Enclosed: Yes
Contiguous: Yes
Permitted: Yes
Wet space: No
Addition: No
Conversion: No

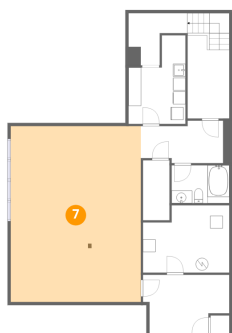
6 Floor 1 - Hall



Dimensions: 13'0" x 6'9"
Area: 84 sq. ft
Counted as living area: Yes

Heated: Yes
Finished: Yes
Enclosed: Yes
Contiguous: Yes
Permitted: Yes
Wet space: No
Addition: No
Conversion: No

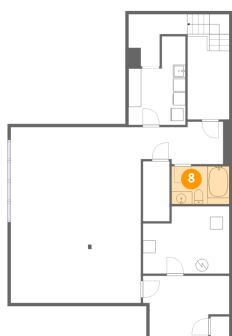
7 Floor 1 - Recreation Room



Dimensions: 20'8" x 27'11"
Area: 577 sq. ft
Counted as living area: Yes

Heated: Yes
Finished: Yes
Enclosed: Yes
Contiguous: Yes
Permitted: Yes
Wet space: No
Addition: No
Conversion: No

8 Floor 1 - Bath

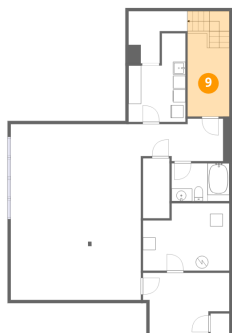


Dimensions: 9'2" x 6'0"
Area: 55 sq. ft
Counted as living area: Yes

Heated: Yes
Finished: Yes
Enclosed: Yes
Contiguous: Yes
Permitted: Yes
Wet space: Yes
Addition: No
Conversion: No

411 Lake Avenue, Wilmette, Cook County, Illinois, United States, 60091

9 Floor 1 - Hall



Dimensions: 6'7" x 13'2"
Area: 111 sq. ft
Counted as living area: Yes

Heated: Yes
Finished: Yes
Enclosed: Yes
Contiguous: Yes
Permitted: Yes
Wet space: No
Addition: No
Conversion: No

10 Floor 2 - Entry



Dimensions: 5'0" x 4'6"
Area: 75 sq. ft
Counted as living area: Yes

Heated: Yes
Finished: Yes
Enclosed: Yes
Contiguous: Yes
Permitted: Yes
Wet space: No
Addition: No
Conversion: No

11 Floor 2 - Patio



Dimensions: 24'8" x 42'5"
Area: 1033 sq. ft
Counted as living area: No

Heated: No
Finished: No
Enclosed: No
Contiguous: Yes
Permitted: Yes
Wet space: No
Addition: No
Conversion: No

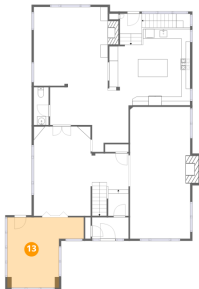
12 Floor 2 - Patio



Dimensions: 16'6" x 10'9"
Area: 94 sq. ft
Counted as living area: No

Heated: No
Finished: No
Enclosed: No
Contiguous: Yes
Permitted: Yes
Wet space: No
Addition: No
Conversion: No

13 Floor 2 - Sun ROOM/OFFICE



Dimensions: 17'5" x 16'0"
Area: 215 sq. ft
Counted as living area: Yes

Heated: Yes
Finished: Yes
Enclosed: Yes
Contiguous: Yes
Permitted: Yes
Wet space: No
Addition: No
Conversion: No

14 Floor 2 - Foyer



Dimensions: 8'4" x 4'10"
Area: 40 sq. ft
Counted as living area: Yes

Heated: Yes
Finished: Yes
Enclosed: Yes
Contiguous: Yes
Permitted: Yes
Wet space: No
Addition: No
Conversion: No

411 Lake Avenue, Wilmette, Cook County, Illinois, United States, 60091

15 Floor 2 - Dining Room



Dimensions: 21'7" x 20'4"
Area: 382 sq. ft
Counted as living area: Yes

Heated: Yes
Finished: Yes
Enclosed: Yes
Contiguous: Yes
Permitted: Yes
Wet space: No
Addition: No
Conversion: No

16 Floor 2 - Bath



Dimensions: 3'4" x 8'7"
Area: 29 sq. ft
Counted as living area: Yes

Heated: Yes
Finished: Yes
Enclosed: Yes
Contiguous: Yes
Permitted: Yes
Wet space: Yes
Addition: No
Conversion: No

17 Floor 2 - Family Room



Dimensions: 19'3" x 18'6"
Area: 321 sq. ft
Counted as living area: Yes

Heated: Yes
Finished: Yes
Enclosed: Yes
Contiguous: Yes
Permitted: Yes
Wet space: No
Addition: No
Conversion: No

411 Lake Avenue, Wilmette, Cook County, Illinois, United States, 60091

18 Floor 2 - Breakfast Area



Dimensions: 17'11" x 14'6"
Area: 189 sq. ft
Counted as living area: Yes

Heated: Yes
Finished: Yes
Enclosed: Yes
Contiguous: Yes
Permitted: Yes
Wet space: No
Addition: No
Conversion: No

19 Floor 2 - Kitchen



Dimensions: 18'5" x 17'4"
Area: 276 sq. ft
Counted as living area: Yes

Heated: Yes
Finished: Yes
Enclosed: Yes
Contiguous: Yes
Permitted: Yes
Wet space: No
Addition: No
Conversion: No

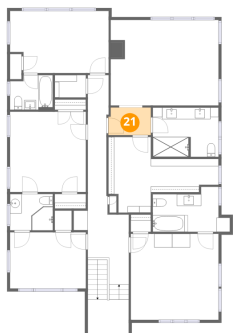
20 Floor 2 - Living Room



Dimensions: 13'9" x 30'0"
Area: 423 sq. ft
Counted as living area: Yes

Heated: Yes
Finished: Yes
Enclosed: Yes
Contiguous: Yes
Permitted: Yes
Wet space: No
Addition: No
Conversion: No

21 Floor 3 - Hall



Dimensions: 7'3" x 4'9"
Area: 34 sq. ft
Counted as living area: Yes

Heated: Yes
Finished: Yes
Enclosed: Yes
Contiguous: Yes
Permitted: Yes
Wet space: No
Addition: No
Conversion: No

22 Floor 3 - Bath



Dimensions: 7'4" x 6'2"
Area: 45 sq. ft
Counted as living area: Yes

Heated: Yes
Finished: Yes
Enclosed: Yes
Contiguous: Yes
Permitted: Yes
Wet space: Yes
Addition: No
Conversion: No

23 Floor 3 - Bath



Dimensions: 13'2" x 7'8"
Area: 81 sq. ft
Counted as living area: Yes

Heated: Yes
Finished: Yes
Enclosed: Yes
Contiguous: Yes
Permitted: Yes
Wet space: Yes
Addition: No
Conversion: No

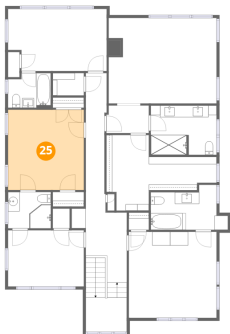
24 Floor 3 - Bedroom



Dimensions: 16'10" x 10'7"
Area: 170 sq. ft
Counted as living area: Yes

Heated: Yes
Finished: Yes
Enclosed: Yes
Contiguous: Yes
Permitted: Yes
Wet space: No
Addition: No
Conversion: No

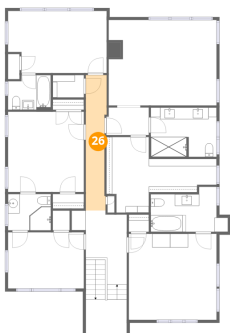
25 Floor 3 - Bedroom



Dimensions: 12'11" x 13'9"
Area: 178 sq. ft
Counted as living area: Yes

Heated: Yes
Finished: Yes
Enclosed: Yes
Contiguous: Yes
Permitted: Yes
Wet space: No
Addition: No
Conversion: No

26 Floor 3 - Hall

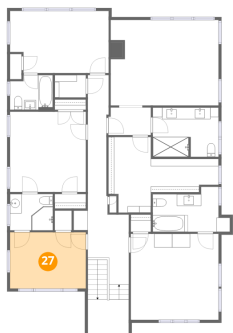


Dimensions: 3'7" x 23'1"
Area: 77 sq. ft
Counted as living area: Yes

Heated: Yes
Finished: Yes
Enclosed: Yes
Contiguous: Yes
Permitted: Yes
Wet space: No
Addition: No
Conversion: No

411 Lake Avenue, Wilmette, Cook County, Illinois, United States, 60091

27 Floor 3 - Bedroom



Dimensions: 12'11" x 9'7"
Area: 124 sq. ft
Counted as living area: Yes

Heated: Yes
Finished: Yes
Enclosed: Yes
Contiguous: Yes
Permitted: Yes
Wet space: No
Addition: No
Conversion: No

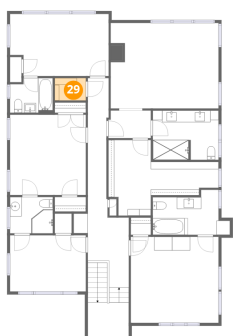
28 Floor 3 - Bedroom



Dimensions: 15'0" x 14'8"
Area: 220 sq. ft
Counted as living area: Yes

Heated: Yes
Finished: Yes
Enclosed: Yes
Contiguous: Yes
Permitted: Yes
Wet space: No
Addition: No
Conversion: No

29 Floor 3 - W.I.C.



Dimensions: 5'4" x 3'10"
Area: 20 sq. ft
Counted as living area: Yes

Heated: Yes
Finished: Yes
Enclosed: Yes
Contiguous: Yes
Permitted: Yes
Wet space: No
Addition: No
Conversion: No

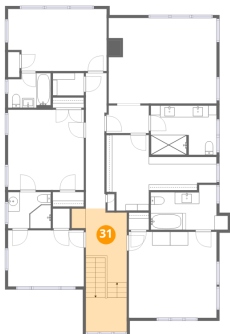
30 Floor 3 - W.I.C.



Dimensions: 18'10" x 12'11"
Area: 150 sq. ft
Counted as living area: Yes

Heated: Yes
Finished: Yes
Enclosed: Yes
Contiguous: Yes
Permitted: Yes
Wet space: No
Addition: No
Conversion: No

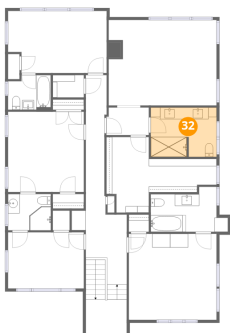
31 Floor 3 - Hall



Dimensions: 9'5" x 11'11"
Area: 153 sq. ft
Counted as living area: Yes

Heated: Yes
Finished: Yes
Enclosed: Yes
Contiguous: Yes
Permitted: Yes
Wet space: No
Addition: No
Conversion: No

32 Floor 3 - Bath



Dimensions: 11'3" x 8'5"
Area: 94 sq. ft
Counted as living area: Yes

Heated: Yes
Finished: Yes
Enclosed: Yes
Contiguous: Yes
Permitted: Yes
Wet space: Yes
Addition: No
Conversion: No

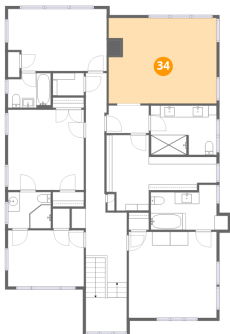
33 Floor 3 - Bath



Dimensions: 7'4" x 5'11"
Area: 41 sq. ft
Counted as living area: Yes

Heated: Yes
Finished: Yes
Enclosed: Yes
Contiguous: Yes
Permitted: Yes
Wet space: Yes
Addition: No
Conversion: No

34 Floor 3 - Primary Bedroom



Dimensions: 18'5" x 14'7"
Area: 261 sq. ft
Counted as living area: Yes

Heated: Yes
Finished: Yes
Enclosed: Yes
Contiguous: Yes
Permitted: Yes
Wet space: No
Addition: No
Conversion: No