

Home data report

664 Bennett Drive, North Aurora, Kane County, Illinois, United States, 60542



Total Area: 4953 sq. ft

Basement: 1199 sq. ft, 1st Floor: 2320 sq. ft, 2nd Floor: 1434 sq. ft

Excluded: Undefined 11 sq. ft, Utility 289 sq. ft, Fireplace 17 sq. ft, Open to below 392 sq. ft, Walls: 323 sq. ft

Property summary



Home data report

664 Bennett Drive, North Aurora, Kane County, Illinois, United States, 60542



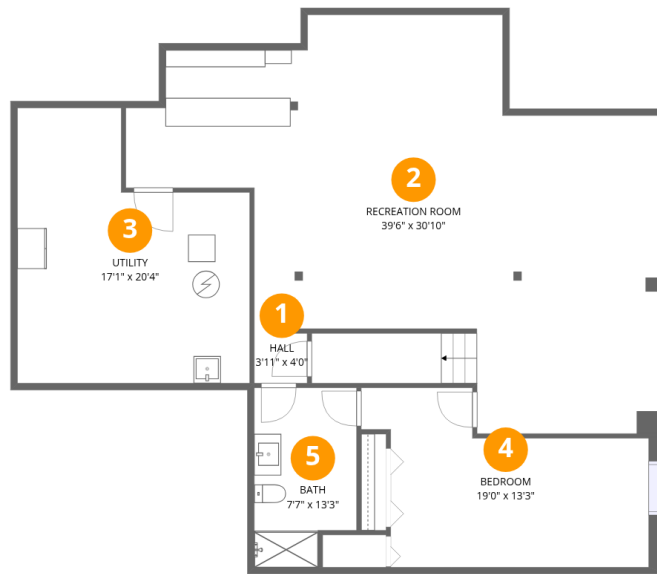
1
Half baths



1
Garages

Home data report

664 Bennett Drive, North Aurora, Kane County, Illinois, United States, 60542



Room dimensions

Floor 1 Below grade

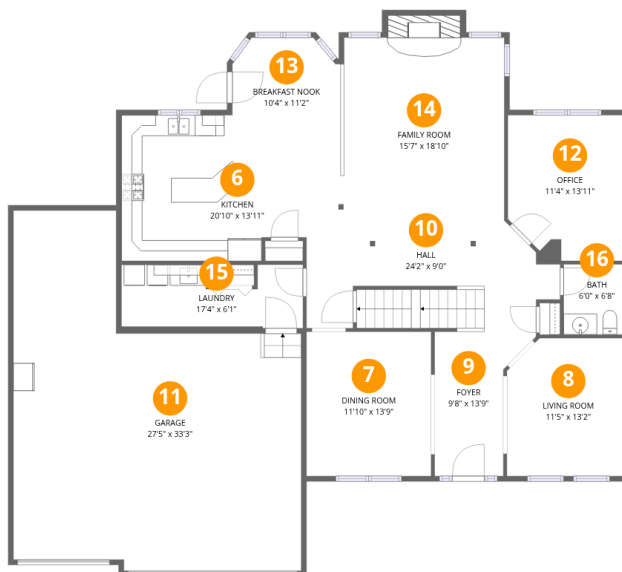
Total:1199sqft

Excluded: 300sqft

#		Dimensions	sqft	Counted as living area
1	Hall	3'11" x 4'0"	16 sq. ft	Yes
2	Recreation Room	39'6" x 30'10"	1217 sq. ft	Yes
3	Utility	17'1" x 20'4"	347 sq. ft	No
4	Bedroom	19'0" x 13'3"	252 sq. ft	Yes
5	Bath	7'7" x 13'3"	100 sq. ft	Yes

Home data report

664 Bennett Drive, North Aurora, Kane County, Illinois, United States, 60542



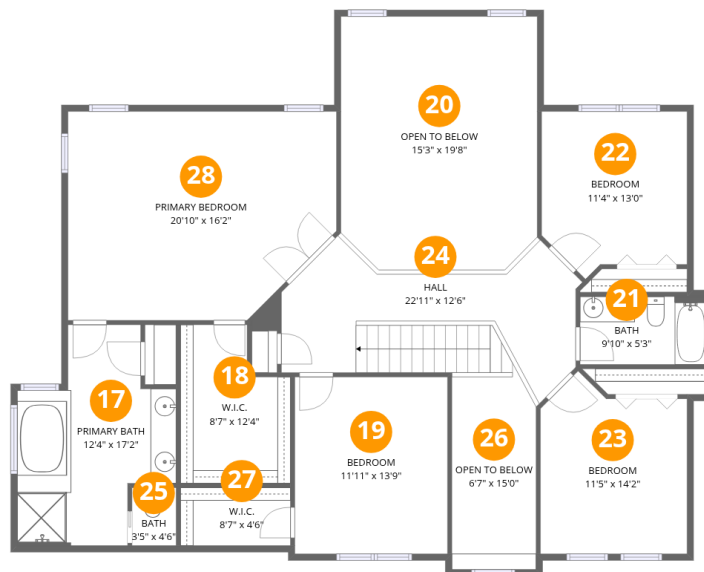
Room dimensions

Floor 2

Total:2320sqft Excluded: 17sqft

#		Dimensions	sqft	Counted as living area
6	Kitchen	20'10" x 13'11"	289 sq. ft	Yes
7	Dining Room	11'10" x 13'9"	163 sq. ft	Yes
8	Living Room	11'5" x 13'2"	150 sq. ft	Yes
9	Foyer	9'8" x 13'9"	133 sq. ft	Yes
10	Hall	24'2" x 9'0"	217 sq. ft	Yes
11	Garage	27'5" x 33'3"	911 sq. ft	Yes
12	Office	11'4" x 13'11"	157 sq. ft	Yes
13	Breakfast Nook	10'4" x 11'2"	116 sq. ft	Yes
14	Family Room	15'7" x 18'10"	294 sq. ft	Yes
15	Laundry	17'4" x 6'1"	105 sq. ft	Yes
16	Bath	6'0" x 6'8"	40 sq. ft	Yes

664 Bennett Drive, North Aurora, Kane County, Illinois, United States, 60542



Room dimensions

Floor 3

Total:1434sqft

Excluded: 392sqft

#		Dimensions	sqft	Counted as living area
17	Primary Bath	12'4" x 17'2"	212 sq. ft	Yes
18	W.I.C.	8'7" x 12'4"	105 sq. ft	Yes
19	Bedroom	11'11" x 13'9"	163 sq. ft	Yes
20	Open To Below	15'3" x 19'8"	301 sq. ft	No
21	Bath	9'10" x 5'3"	52 sq. ft	Yes
22	Bedroom	11'4" x 13'0"	147 sq. ft	Yes
23	Bedroom	11'5" x 14'2"	162 sq. ft	Yes
24	Hall	22'11" x 12'6"	286 sq. ft	Yes
25	Bath	3'5" x 4'6"	16 sq. ft	Yes
26	Open To Below	6'7" x 15'0"	98 sq. ft	No
27	W.I.C.	8'7" x 4'6"	39 sq. ft	Yes

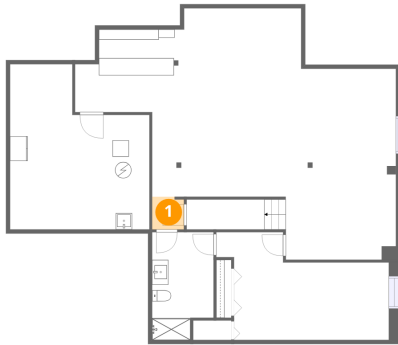
Home data report

664 Bennett Drive, North Aurora, Kane County, Illinois, United States, 60542

#		Dimensions	sqft	Counted as living area
28	Primary Bedroom	20'10" x 16'2"	338 sq. ft	Yes

664 Bennett Drive, North Aurora, Kane County, Illinois, United States, 60542

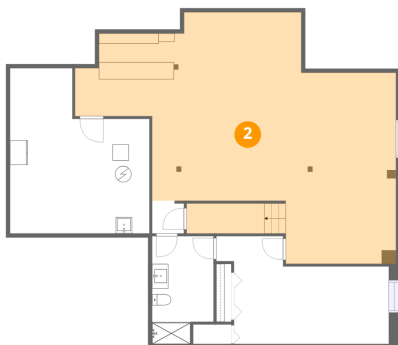
1 Floor 1 - Hall



Dimensions: 3'11" x 4'0"
Area: 16 sq. ft
Counted as living area: Yes

Heated: Yes
Finished: Yes
Enclosed: Yes
Contiguous: Yes
Permitted: Yes
Wet space: No
Addition: No
Conversion: No

2 Floor 1 - Recreation Room

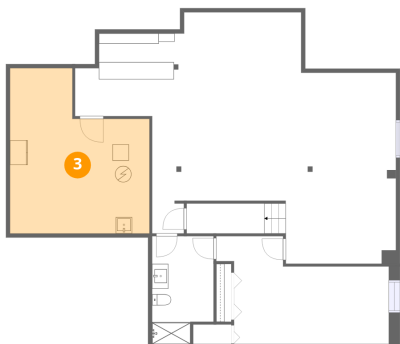


Dimensions: 39'6" x 30'10"
Area: 1217 sq. ft
Counted as living area: Yes

Heated: Yes
Finished: Yes
Enclosed: Yes
Contiguous: Yes
Permitted: Yes
Wet space: No
Addition: No
Conversion: No

664 Bennett Drive, North Aurora, Kane County, Illinois, United States, 60542

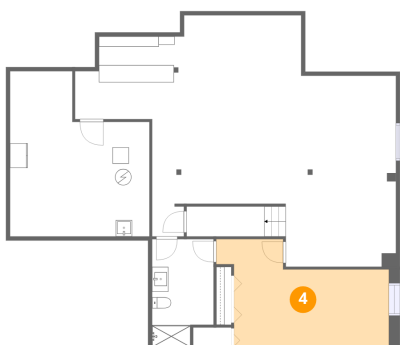
3 Floor 1 - Utility



Dimensions: 17'1" x 20'4"
Area: 347 sq. ft
Counted as living area: No

Heated: Yes
Finished: No
Enclosed: Yes
Contiguous: Yes
Permitted: Yes
Wet space: No
Addition: No
Conversion: No

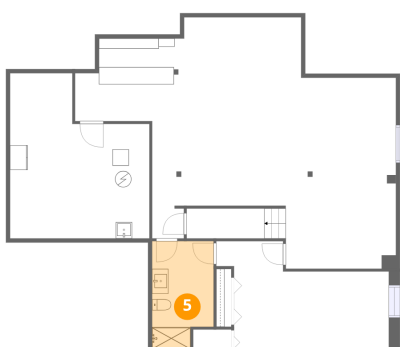
4 Floor 1 - Bedroom



Dimensions: 19'0" x 13'3"
Area: 252 sq. ft
Counted as living area: Yes

Heated: Yes
Finished: Yes
Enclosed: Yes
Contiguous: Yes
Permitted: Yes
Wet space: No
Addition: No
Conversion: No

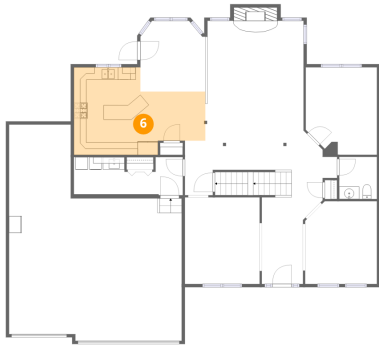
5 Floor 1 - Bath



Dimensions: 7'7" x 13'3"
Area: 100 sq. ft
Counted as living area: Yes

Heated: Yes
Finished: Yes
Enclosed: Yes
Contiguous: Yes
Permitted: Yes
Wet space: Yes
Addition: No
Conversion: No

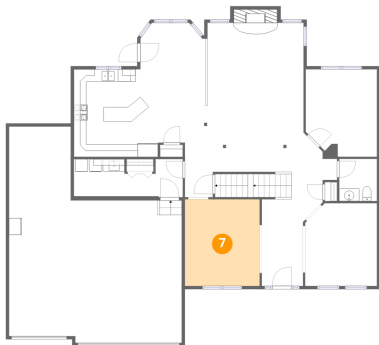
6 Floor 2 - Kitchen



Dimensions: 20'10" x 13'11"
Area: 289 sq. ft
Counted as living area: Yes

Heated: Yes
Finished: Yes
Enclosed: Yes
Contiguous: Yes
Permitted: Yes
Wet space: No
Addition: No
Conversion: No

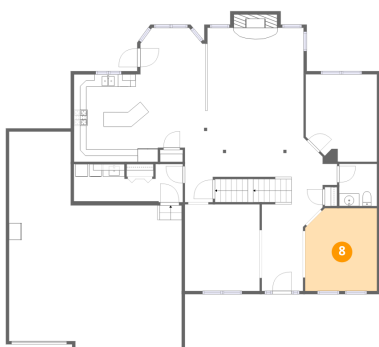
7 Floor 2 - Dining Room



Dimensions: 11'10" x 13'9"
Area: 163 sq. ft
Counted as living area: Yes

Heated: Yes
Finished: Yes
Enclosed: Yes
Contiguous: Yes
Permitted: Yes
Wet space: No
Addition: No
Conversion: No

8 Floor 2 - Living Room

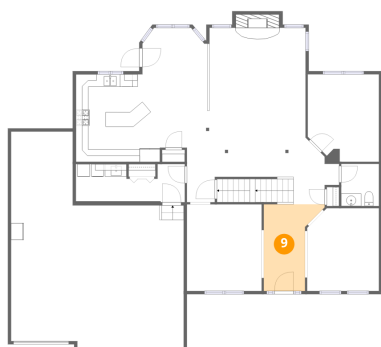


Dimensions: 11'5" x 13'2"
Area: 150 sq. ft
Counted as living area: Yes

Heated: Yes
Finished: Yes
Enclosed: Yes
Contiguous: Yes
Permitted: Yes
Wet space: No
Addition: No
Conversion: No

664 Bennett Drive, North Aurora, Kane County, Illinois, United States, 60542

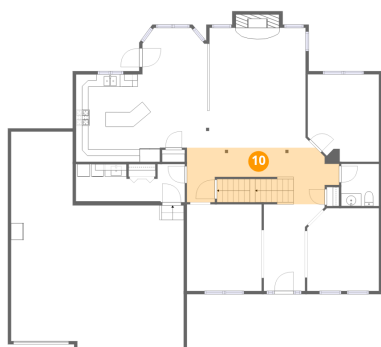
9 Floor 2 - Foyer



Dimensions: 9'8" x 13'9"
Area: 133 sq. ft
Counted as living area: Yes

Heated: Yes
Finished: Yes
Enclosed: Yes
Contiguous: Yes
Permitted: Yes
Wet space: No
Addition: No
Conversion: No

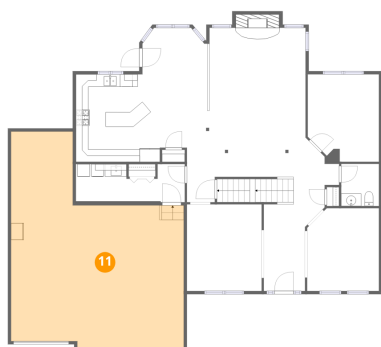
10 Floor 2 - Hall



Dimensions: 24'2" x 9'0"
Area: 217 sq. ft
Counted as living area: Yes

Heated: Yes
Finished: Yes
Enclosed: Yes
Contiguous: Yes
Permitted: Yes
Wet space: No
Addition: No
Conversion: No

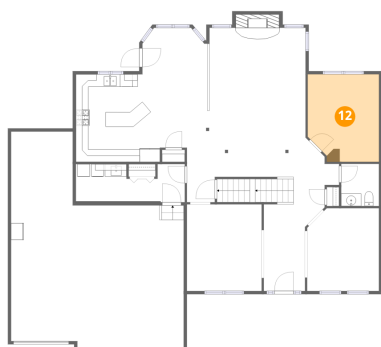
11 Floor 2 - Garage



Dimensions: 27'5" x 33'3"
Area: 911 sq. ft
Counted as living area: No

Heated: No
Finished: Yes
Enclosed: Yes
Contiguous: Yes
Permitted: Yes
Wet space: No
Addition: No
Conversion: No

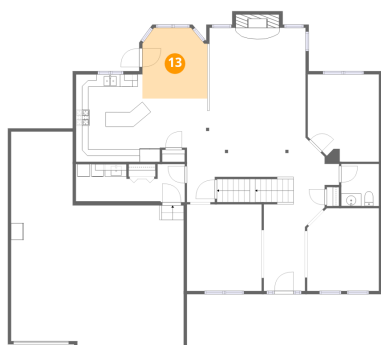
12 Floor 2 - Office



Dimensions: 11'4" x 13'11"
Area: 157 sq. ft
Counted as living area: Yes

Heated: Yes
Finished: Yes
Enclosed: Yes
Contiguous: Yes
Permitted: Yes
Wet space: No
Addition: No
Conversion: No

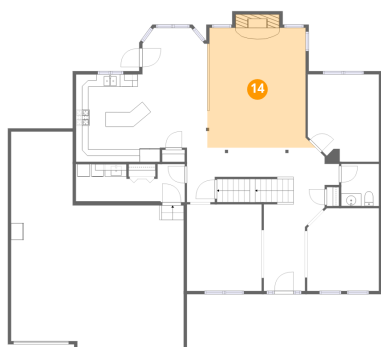
13 Floor 2 - Breakfast Nook



Dimensions: 10'4" x 11'2"
Area: 116 sq. ft
Counted as living area: Yes

Heated: Yes
Finished: Yes
Enclosed: Yes
Contiguous: Yes
Permitted: Yes
Wet space: No
Addition: No
Conversion: No

14 Floor 2 - Family Room

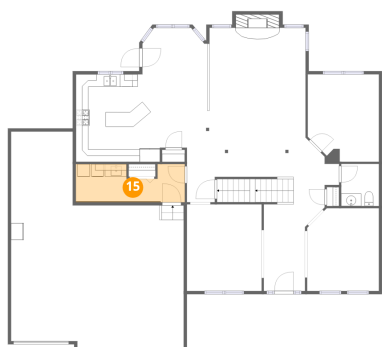


Dimensions: 15'7" x 18'10"
Area: 294 sq. ft
Counted as living area: Yes

Heated: Yes
Finished: Yes
Enclosed: Yes
Contiguous: Yes
Permitted: Yes
Wet space: No
Addition: No
Conversion: No

664 Bennett Drive, North Aurora, Kane County, Illinois, United States, 60542

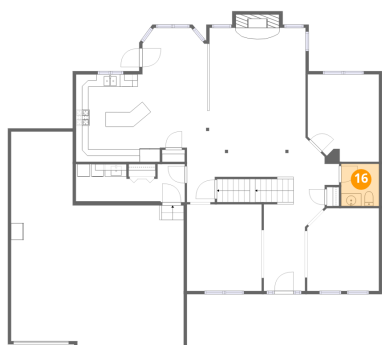
15 Floor 2 - Laundry



Dimensions: 17'4" x 6'1"
Area: 105 sq. ft
Counted as living area: Yes

Heated: Yes
Finished: Yes
Enclosed: Yes
Contiguous: Yes
Permitted: Yes
Wet space: No
Addition: No
Conversion: No

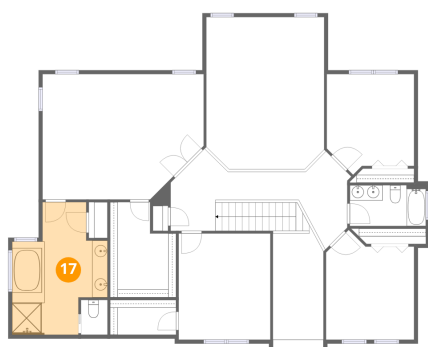
16 Floor 2 - Bath



Dimensions: 6'0" x 6'8"
Area: 40 sq. ft
Counted as living area: Yes

Heated: Yes
Finished: Yes
Enclosed: Yes
Contiguous: Yes
Permitted: Yes
Wet space: Yes
Addition: No
Conversion: No

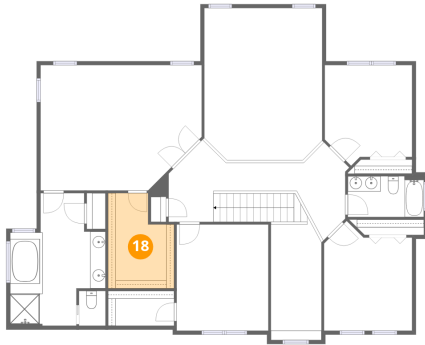
17 Floor 3 - Primary Bath



Dimensions: 12'4" x 17'2"
Area: 212 sq. ft
Counted as living area: Yes

Heated: Yes
Finished: Yes
Enclosed: Yes
Contiguous: Yes
Permitted: Yes
Wet space: Yes
Addition: No
Conversion: No

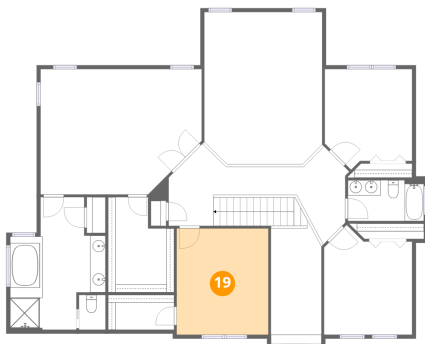
18 Floor 3 - W.I.C.



Dimensions: 8'7" x 12'4"
Area: 105 sq. ft
Counted as living area: Yes

Heated: Yes
Finished: Yes
Enclosed: Yes
Contiguous: Yes
Permitted: Yes
Wet space: No
Addition: No
Conversion: No

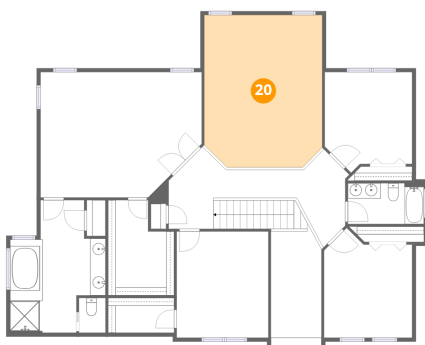
19 Floor 3 - Bedroom



Dimensions: 11'11" x 13'9"
Area: 163 sq. ft
Counted as living area: Yes

Heated: Yes
Finished: Yes
Enclosed: Yes
Contiguous: Yes
Permitted: Yes
Wet space: No
Addition: No
Conversion: No

20 Floor 3 - Open To Below



Dimensions: 15'3" x 19'8"
Area: 301 sq. ft
Counted as living area: No

Heated: No
Finished: No
Enclosed: No
Contiguous: Yes
Permitted: No
Wet space: No
Addition: No
Conversion: No

664 Bennett Drive, North Aurora, Kane County, Illinois, United States, 60542

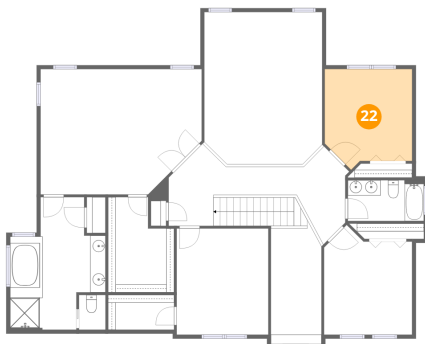
21 Floor 3 - Bath



Dimensions: 9'10" x 5'3"
Area: 52 sq. ft
Counted as living area: Yes

Heated: Yes
Finished: Yes
Enclosed: Yes
Contiguous: Yes
Permitted: Yes
Wet space: Yes
Addition: No
Conversion: No

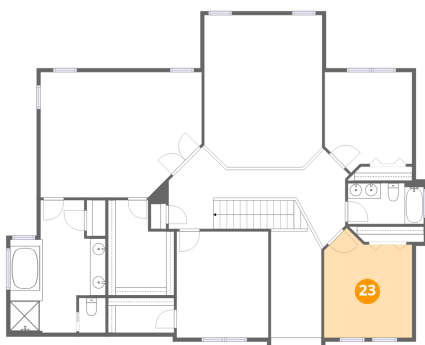
22 Floor 3 - Bedroom



Dimensions: 11'4" x 13'0"
Area: 147 sq. ft
Counted as living area: Yes

Heated: Yes
Finished: Yes
Enclosed: Yes
Contiguous: Yes
Permitted: Yes
Wet space: No
Addition: No
Conversion: No

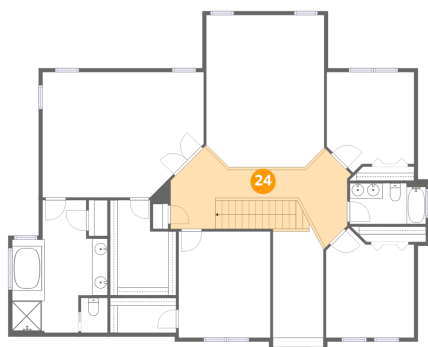
23 Floor 3 - Bedroom



Dimensions: 11'5" x 14'2"
Area: 162 sq. ft
Counted as living area: Yes

Heated: Yes
Finished: Yes
Enclosed: Yes
Contiguous: Yes
Permitted: Yes
Wet space: No
Addition: No
Conversion: No

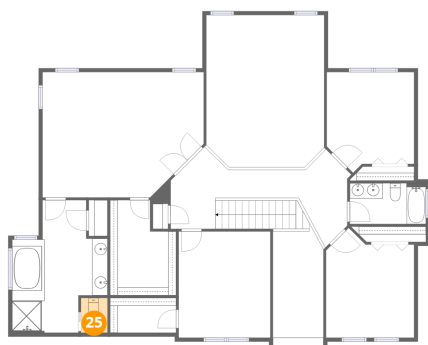
24 Floor 3 - Hall



Dimensions: 22'11" x 12'6"
Area: 286 sq. ft
Counted as living area: Yes

Heated: Yes
Finished: Yes
Enclosed: Yes
Contiguous: Yes
Permitted: Yes
Wet space: No
Addition: No
Conversion: No

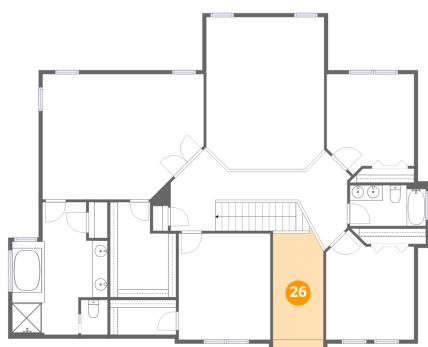
25 Floor 3 - Bath



Dimensions: 3'5" x 4'6"
Area: 16 sq. ft
Counted as living area: Yes

Heated: Yes
Finished: Yes
Enclosed: Yes
Contiguous: Yes
Permitted: Yes
Wet space: Yes
Addition: No
Conversion: No

26 Floor 3 - Open To Below

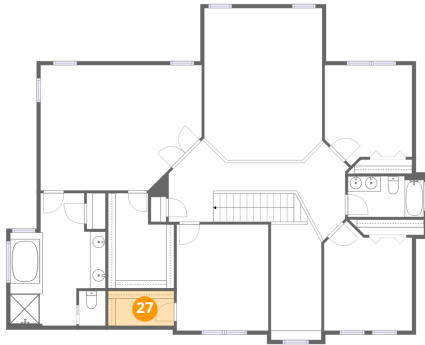


Dimensions: 6'7" x 15'0"
Area: 98 sq. ft
Counted as living area: No

Heated: No
Finished: No
Enclosed: No
Contiguous: Yes
Permitted: No
Wet space: No
Addition: No
Conversion: No

664 Bennett Drive, North Aurora, Kane County, Illinois, United States, 60542

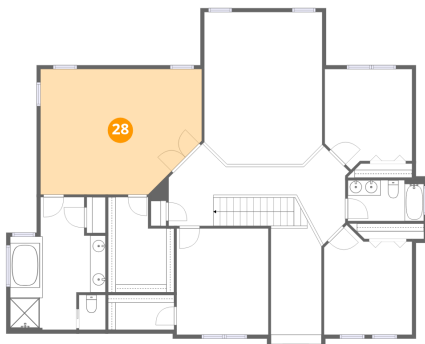
27 Floor 3 - W.I.C.



Dimensions: 8'7" x 4'6"
Area: 39 sq. ft
Counted as living area: Yes

Heated: Yes
Finished: Yes
Enclosed: Yes
Contiguous: Yes
Permitted: Yes
Wet space: No
Addition: No
Conversion: No

28 Floor 3 - Primary Bedroom



Dimensions: 20'10" x 16'2"
Area: 338 sq. ft
Counted as living area: Yes

Heated: Yes
Finished: Yes
Enclosed: Yes
Contiguous: Yes
Permitted: Yes
Wet space: No
Addition: No
Conversion: No