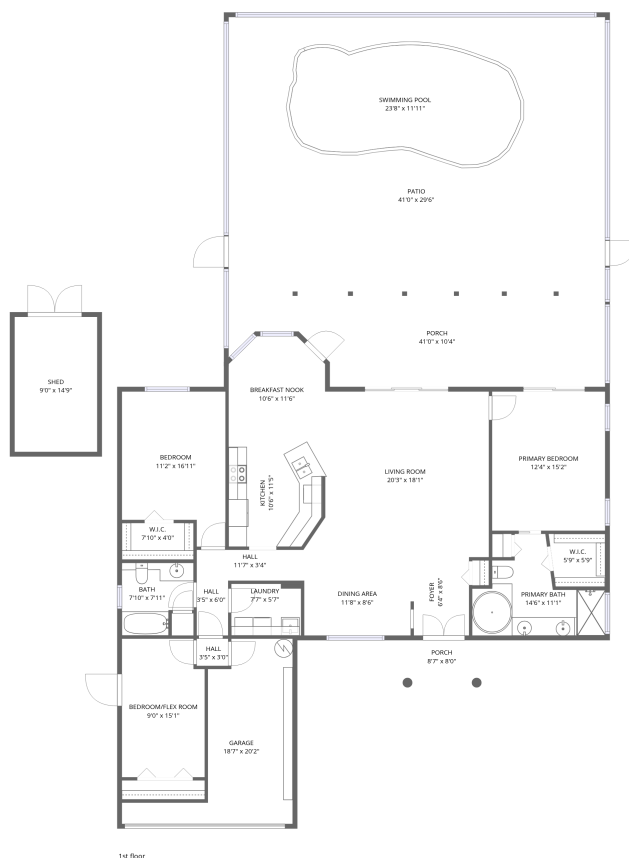


Home data report

8052 Spring Hill Drive, Spring Hill, Hernando County, Florida, United States, 34606



Total Area: 1625 sq. ft

1st Floor: 1625 sq. ft

Excluded: Garage 200 sq. ft, Shed 133 sq. ft, Porch 437 sq. ft, Patio 947 sq. ft, Walls: 201 sq. ft

Property summary



1 Floors



3 Bedrooms



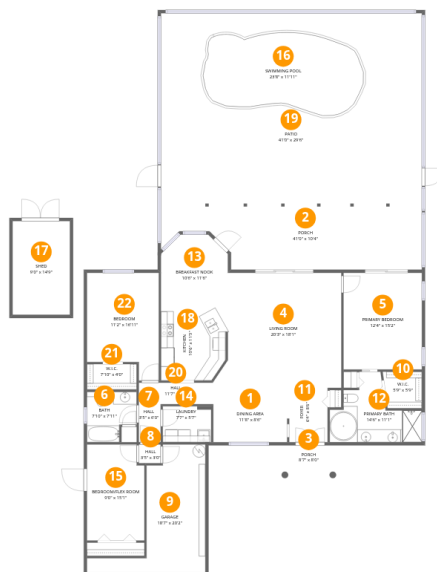
2 Bathrooms



1 Garages

Home data report

8052 Spring Hill Drive, Spring Hill, Hernando County, Florida, United States, 34606



Room dimensions

Floor 1

Total:1625sqft

Excluded: 1717sqft

#		Dimensions	sqft	Counted as living area
1	Dining Area	11'8" x 8'6"	100 sq. ft	Yes
2	Porch	41'0" x 10'4"	424 sq. ft	No
3	Porch	8'7" x 8'0"	68 sq. ft	No
4	Living Room	20'3" x 18'1"	366 sq. ft	Yes
5	Primary Bedroom	12'4" x 15'2"	187 sq. ft	Yes
6	Bath	7'10" x 7'11"	62 sq. ft	Yes
7	Hall	3'5" x 6'0"	21 sq. ft	Yes
8	Hall	3'5" x 3'0"	10 sq. ft	Yes
9	Garage	18'7" x 20'2"	376 sq. ft	No
10	W.I.C.	5'9" x 5'9"	33 sq. ft	Yes

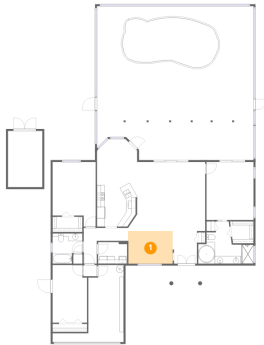
Home data report

**8052 Spring Hill Drive, Spring Hill, Hernando County, Florida,
United States, 34606**

#		Dimensions	sqft	Counted as living area
11	Foyer	6'4" x 8'6"	54 sq. ft	Yes
12	Primary Bath	14'6" x 11'1"	161 sq. ft	Yes
13	Breakfast Nook	10'6" x 11'6"	121 sq. ft	Yes
14	Laundry	7'7" x 5'7"	42 sq. ft	Yes
15	BEDROOM/FLEX Room	9'0" x 15'1"	136 sq. ft	Yes
16	Swimming Pool	23'8" x 11'11"	282 sq. ft	No
17	Shed	9'0" x 14'9"	133 sq. ft	No
18	Kitchen	10'6" x 11'5"	120 sq. ft	Yes
19	Patio	41'0" x 29'6"	1211 sq. ft	No
20	Hall	11'7" x 3'4"	39 sq. ft	Yes
21	W.I.C.	7'10" x 4'0"	31 sq. ft	Yes
22	Bedroom	11'2" x 16'11"	188 sq. ft	Yes

8052 Spring Hill Drive, Spring Hill, Hernando County, Florida,
United States, 34606

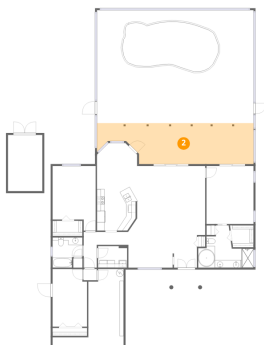
1 Floor 1 - Dining Area



Dimensions: 11'8" x 8'6"
Area: 100 sq. ft
Counted as living area: Yes

Heated: Yes
Finished: Yes
Enclosed: Yes
Contiguous: Yes
Permitted: Yes
Wet space: No
Addition: No
Conversion: No

2 Floor 1 - Porch

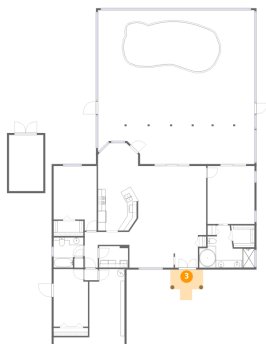


Dimensions: 41'0" x 10'4"
Area: 424 sq. ft
Counted as living area: No

Heated: No
Finished: No
Enclosed: No
Contiguous: Yes
Permitted: Yes
Wet space: No
Addition: No
Conversion: No

8052 Spring Hill Drive, Spring Hill, Hernando County, Florida, United States, 34606

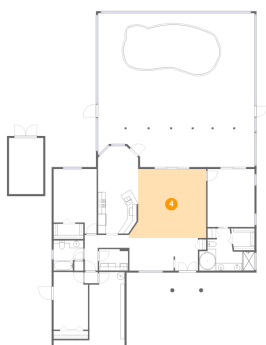
3 Floor 1 - Porch



Dimensions: 8'7" x 8'0"
Area: 68 sq. ft
Counted as living area: No

Heated: No
Finished: No
Enclosed: No
Contiguous: Yes
Permitted: Yes
Wet space: No
Addition: No
Conversion: No

4 Floor 1 - Living Room



Dimensions: 20'3" x 18'1"
Area: 366 sq. ft
Counted as living area: Yes

Heated: Yes
Finished: Yes
Enclosed: Yes
Contiguous: Yes
Permitted: Yes
Wet space: No
Addition: No
Conversion: No

5 Floor 1 - Primary Bedroom

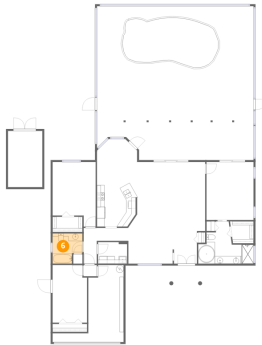


Dimensions: 12'4" x 15'2"
Area: 187 sq. ft
Counted as living area: Yes

Heated: Yes
Finished: Yes
Enclosed: Yes
Contiguous: Yes
Permitted: Yes
Wet space: No
Addition: No
Conversion: No

8052 Spring Hill Drive, Spring Hill, Hernando County, Florida,
United States, 34606

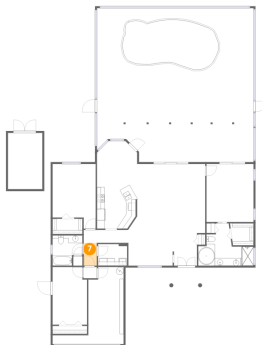
6 Floor 1 - Bath



Dimensions: 7'10" x 7'11"
Area: 62 sq. ft
Counted as living area: Yes

Heated: Yes
Finished: Yes
Enclosed: Yes
Contiguous: Yes
Permitted: Yes
Wet space: Yes
Addition: No
Conversion: No

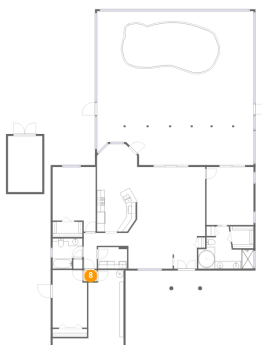
7 Floor 1 - Hall



Dimensions: 3'5" x 6'0"
Area: 21 sq. ft
Counted as living area: Yes

Heated: Yes
Finished: Yes
Enclosed: Yes
Contiguous: Yes
Permitted: Yes
Wet space: No
Addition: No
Conversion: No

8 Floor 1 - Hall

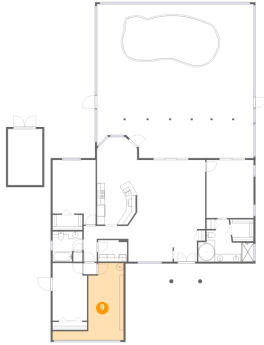


Dimensions: 3'5" x 3'0"
Area: 10 sq. ft
Counted as living area: Yes

Heated: Yes
Finished: Yes
Enclosed: Yes
Contiguous: Yes
Permitted: Yes
Wet space: No
Addition: No
Conversion: No

8052 Spring Hill Drive, Spring Hill, Hernando County, Florida,
United States, 34606

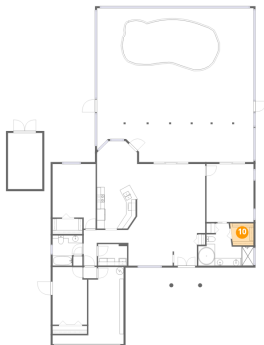
9 Floor 1 - Garage



Dimensions: 18'7" x 20'2"
Area: 376 sq. ft
Counted as living area: No

Heated: No
Finished: No
Enclosed: Yes
Contiguous: Yes
Permitted: Yes
Wet space: No
Addition: No
Conversion: No

10 Floor 1 - W.I.C.



Dimensions: 5'9" x 5'9"
Area: 33 sq. ft
Counted as living area: Yes

Heated: Yes
Finished: Yes
Enclosed: Yes
Contiguous: Yes
Permitted: Yes
Wet space: No
Addition: No
Conversion: No

11 Floor 1 - Foyer

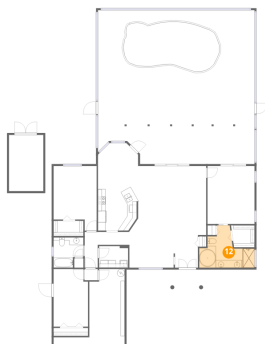


Dimensions: 6'4" x 8'6"
Area: 54 sq. ft
Counted as living area: Yes

Heated: Yes
Finished: Yes
Enclosed: Yes
Contiguous: Yes
Permitted: Yes
Wet space: No
Addition: No
Conversion: No

8052 Spring Hill Drive, Spring Hill, Hernando County, Florida, United States, 34606

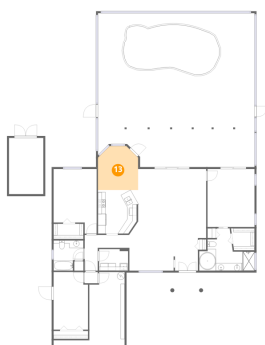
12 Floor 1 - Primary Bath



Dimensions: 14'6" x 11'1"
Area: 161 sq. ft
Counted as living area: Yes

Heated: Yes
Finished: Yes
Enclosed: Yes
Contiguous: Yes
Permitted: Yes
Wet space: Yes
Addition: No
Conversion: No

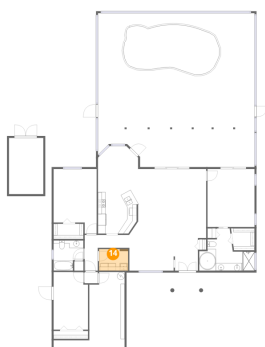
13 Floor 1 - Breakfast Nook



Dimensions: 10'6" x 11'6"
Area: 121 sq. ft
Counted as living area: Yes

Heated: Yes
Finished: Yes
Enclosed: Yes
Contiguous: Yes
Permitted: Yes
Wet space: No
Addition: No
Conversion: No

14 Floor 1 - Laundry

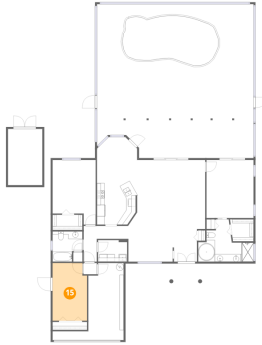


Dimensions: 7'7" x 5'7"
Area: 42 sq. ft
Counted as living area: Yes

Heated: Yes
Finished: Yes
Enclosed: Yes
Contiguous: Yes
Permitted: Yes
Wet space: No
Addition: No
Conversion: No

8052 Spring Hill Drive, Spring Hill, Hernando County, Florida,
United States, 34606

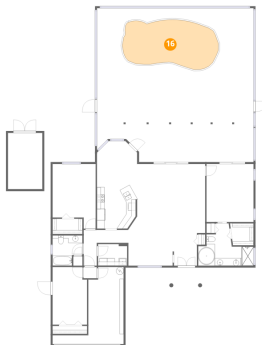
15 Floor 1 - BEDROOM/FLEX Room



Dimensions: 9'0" x 15'1"
Area: 136 sq. ft
Counted as living area: Yes

Heated: Yes
Finished: Yes
Enclosed: Yes
Contiguous: Yes
Permitted: Yes
Wet space: No
Addition: No
Conversion: No

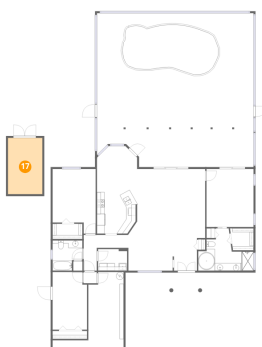
16 Floor 1 - Swimming Pool



Dimensions: 23'8" x 11'11"
Area: 282 sq. ft
Counted as living area: No

Heated: No
Finished: No
Enclosed: No
Contiguous: Yes
Permitted: No
Wet space: No
Addition: No
Conversion: No

17 Floor 1 - Shed

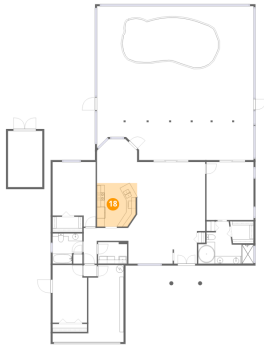


Dimensions: 9'0" x 14'9"
Area: 133 sq. ft
Counted as living area: No

Heated: No
Finished: No
Enclosed: No
Contiguous: Yes
Permitted: Yes
Wet space: No
Addition: No
Conversion: No

8052 Spring Hill Drive, Spring Hill, Hernando County, Florida,
United States, 34606

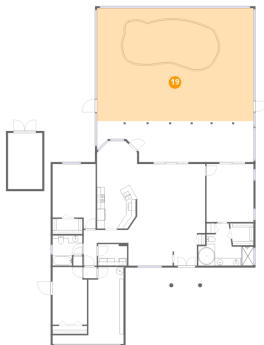
18 Floor 1 - Kitchen



Dimensions: 10'6" x 11'5"
Area: 120 sq. ft
Counted as living area: Yes

Heated: Yes
Finished: Yes
Enclosed: Yes
Contiguous: Yes
Permitted: Yes
Wet space: No
Addition: No
Conversion: No

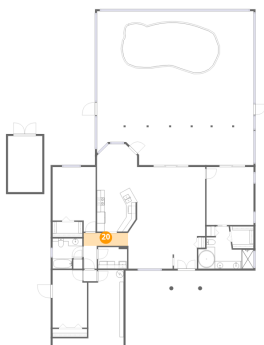
19 Floor 1 - Patio



Dimensions: 41'0" x 29'6"
Area: 1211 sq. ft
Counted as living area: No

Heated: No
Finished: No
Enclosed: No
Contiguous: Yes
Permitted: Yes
Wet space: No
Addition: No
Conversion: No

20 Floor 1 - Hall

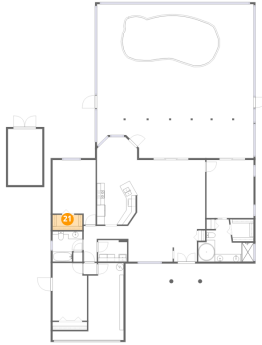


Dimensions: 11'7" x 3'4"
Area: 39 sq. ft
Counted as living area: Yes

Heated: Yes
Finished: Yes
Enclosed: Yes
Contiguous: Yes
Permitted: Yes
Wet space: No
Addition: No
Conversion: No

8052 Spring Hill Drive, Spring Hill, Hernando County, Florida,
United States, 34606

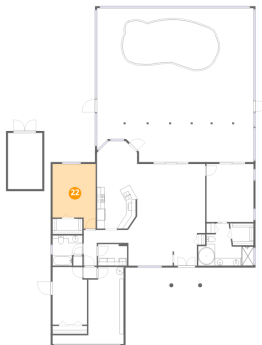
21 Floor 1 - W.I.C.



Dimensions: 7'10" x 4'0"
Area: 31 sq. ft
Counted as living area: Yes

Heated: Yes
Finished: Yes
Enclosed: Yes
Contiguous: Yes
Permitted: Yes
Wet space: No
Addition: No
Conversion: No

22 Floor 1 - Bedroom



Dimensions: 11'2" x 16'11"
Area: 188 sq. ft
Counted as living area: Yes

Heated: Yes
Finished: Yes
Enclosed: Yes
Contiguous: Yes
Permitted: Yes
Wet space: No
Addition: No
Conversion: No