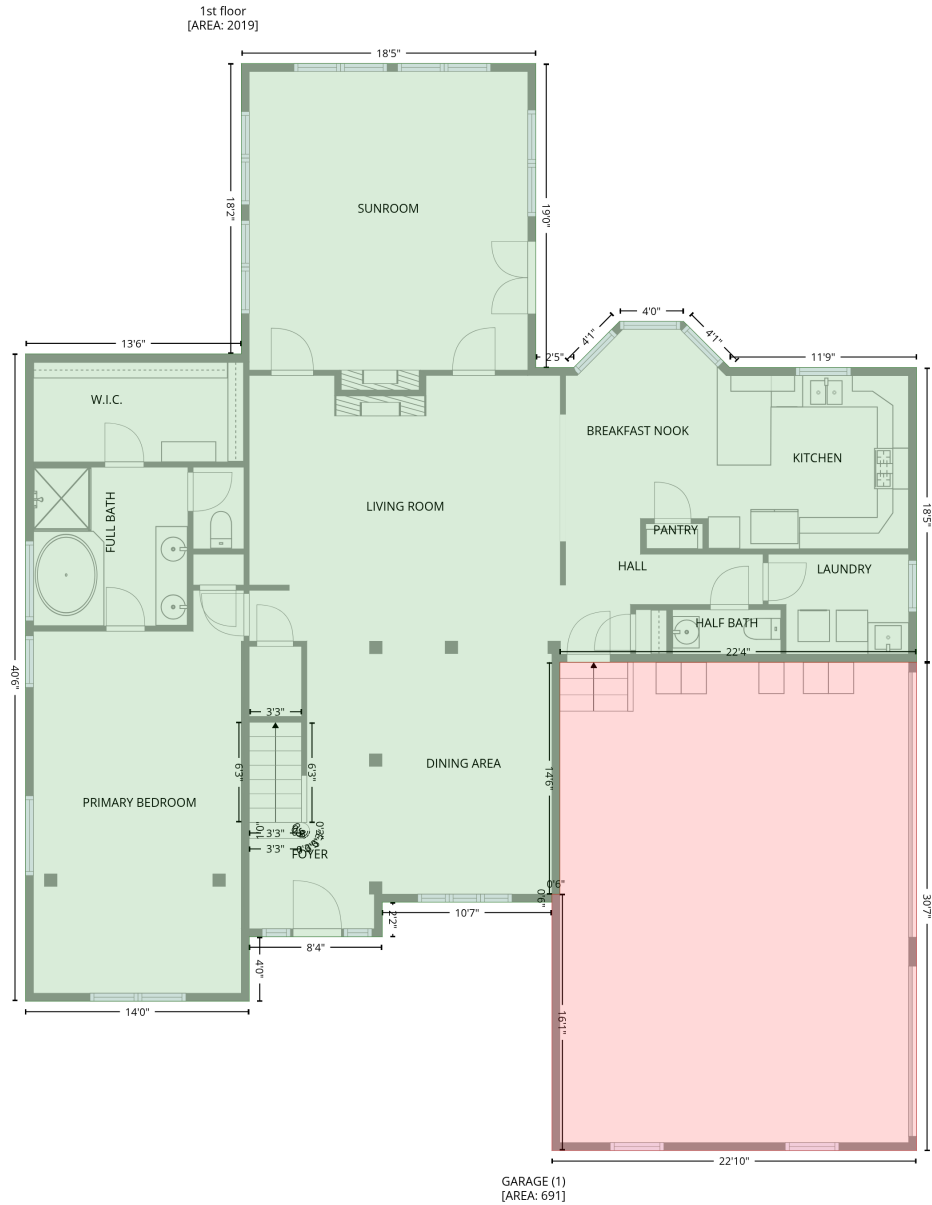


# 170 Kenway Loop, Mooresville, NC, US

Gross Living Area: 3295 sq. ft

## Level 1



Space	Area (sq. ft)	Calculation
1st floor (Living area)	2019	Coordinate Polygon Area Algorithm using inches $-((241.3 + 241.3) * (589.4 - 637.8) + (241.3 + 73.1) * (637.8 - 637.8) + (73.1 + 73.1) * (637.8 - 151.5) + (73.1 + 235.3) * (151.5 - 151.5) + (235.3 + 235.3) * (151.5 - -66.6) + (235.3 + 456.7) * (-66.6 - -66.6) + (456.7 + 456.7) * (-66.6 - 161.7) + (456.7 + 485.3) * (161.7 - 161.7) + (485.3 + 519.6) * (161.7 - 127.1) + (519.6 + 567.7) * (127.1 - 127.1) + (567.7 + 602.4) * (127.1 - 161.7) + (602.4 + 742.9) * (161.7 - 161.7) + (742.9 + 742.9) * (161.7 - 383.1) + (742.9 + 474.8) * (383.1 - 383.1) + (474.8 + 474.8) * (383.1 - 557.4) + (474.8 + 468.8) * (557.4 - 557.4) + (468.8 + 468.8) * (557.4 - 563.4) + (468.8 + 341.3) * (563.4 - 563.4) + (341.3 + 341.3) * (563.4 - 589.4) + (341.3 + 241.3) * (589.4 - 589.4)) * 0.5 * 0.00694$

# 170 Kenway Loop, Mooresville, NC, US

Gross Living Area: 3295 sq. ft

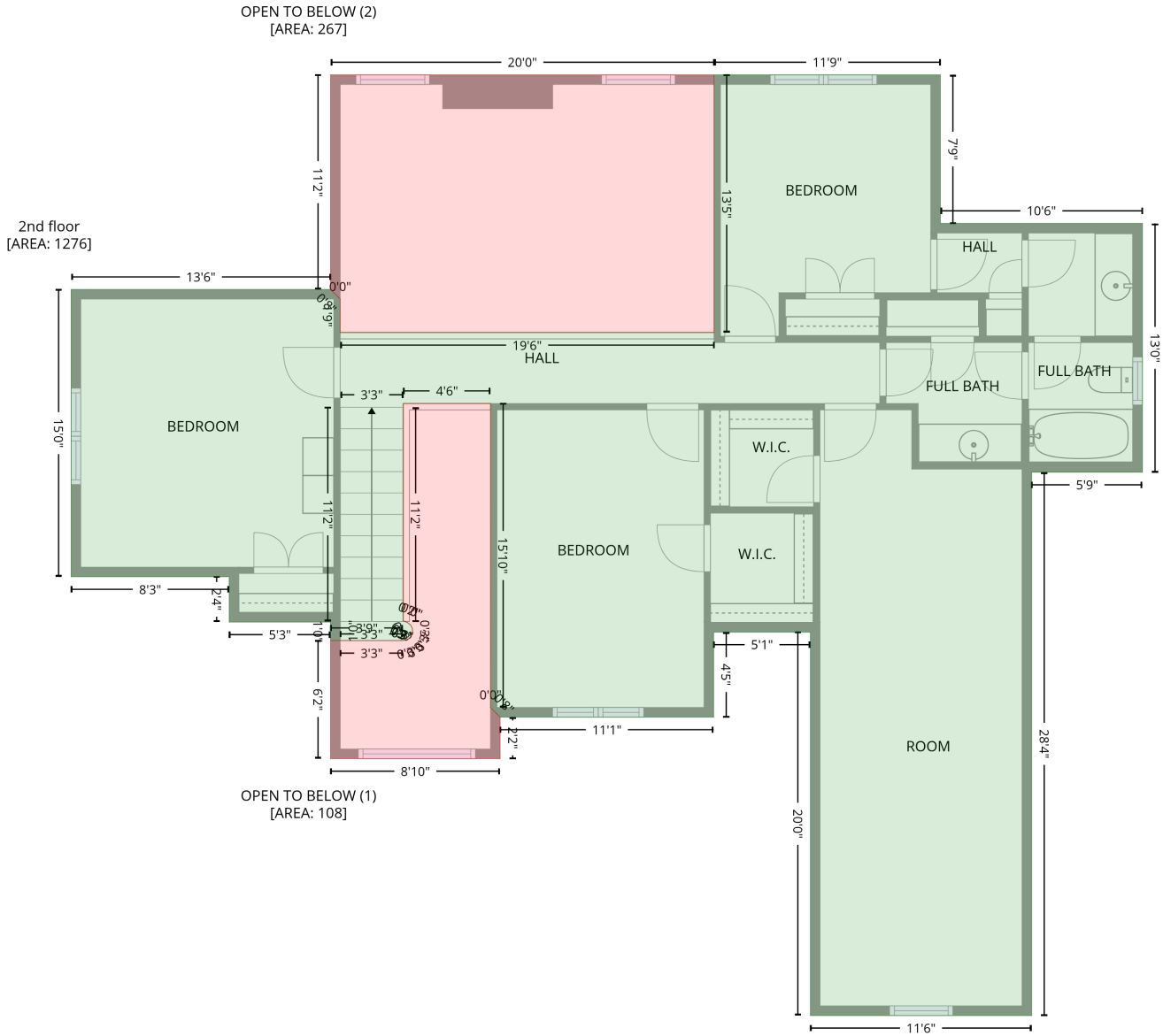
## Level 1

Space	Area (sq. ft)	Calculation <small>Coordinate Polygon Area Algorithm using inches</small>
GARAGE (Non-living area)	691	$-\left((742.9 + 742.9) * (383.1 - 750) + (742.9 + 468.8) * (750 - 750) + (468.8 + 468.8) * (750 - 557.4) + (468.8 + 474.8) * (557.4 - 557.4) + (474.8 + 474.8) * (557.4 - 383.1) + (474.8 + 742.9) * (383.1 - 383.1)\right) * 0.5 * 0.00694$

# 170 Kenway Loop, Mooresville, NC, US

Gross Living Area: 3295 sq. ft

## Level 2



# 170 Kenway Loop, Mooresville, NC, US

Gross Living Area: 3295 sq. ft

## Level 2

Space	Area (sq. ft)	Calculation <small>Coordinate Polygon Area Algorithm using inches</small>
2nd floor (Living area)	1276	$-\left((241.3 + 475.1) * (322.9 - 322.9) + (475.1 + 475.1) * (322.9 - 161.7) + (475.1 + 616.5) * (161.7 - 161.7) + (616.5 + 616.5) * (161.7 - 254.6) + (616.5 + 742.9) * (254.6 - 254.6) + (742.9 + 742.9) * (254.6 - 410.2) + (742.9 + 673.6) * (410.2 - 410.2) + (673.6 + 673.6) * (410.2 - 750) + (673.6 + 535.3) * (750 - 750) + (535.3 + 535.3) * (750 - 510.2) + (535.3 + 474.8) * (510.2 - 510.2) + (474.8 + 474.8) * (510.2 - 563.4) + (474.8 + 341.3) * (563.4 - 563.4) + (341.3 + 335.3) * (563.4 - 557.4) + (335.3 + 335.3) * (557.4 - 557.4) + (335.3 + 335.3) * (557.4 - 367.2) + (335.3 + 280.9) * (367.2 - 367.2) + (280.9 + 280.9) * (367.2 - 503.2) + (280.9 + 283.2) * (503.2 - 504.1) + (283.2 + 285.3) * (504.1 - 505.7) + (285.3 + 286.5) * (505.7 - 508.2) + (286.5 + 286.5) * (508.2 - 510.8) + (286.5 + 285.3) * (510.8 - 513.3) + (285.3 + 283.2) * (513.3 - 514.9) + (283.2 + 280.6) * (514.9 - 515.5) + (280.6 + 235.3) * (515.5 - 515.5) + (235.3 + 235.3) * (515.5 - 503.9) + (235.3 + 171.9) * (503.9 - 503.9) + (171.9 + 171.9) * (503.9 - 475.6) + (171.9 + 73.1) * (475.6 - 475.6) + (73.1 + 73.1) * (475.6 - 295.9) + (73.1 + 235.3) * (295.9 - 295.9) + (235.3 + 241.3) * (295.9 - 301.9) + (241.3 + 241.3) * (301.9 - 301.9) + (241.3 + 241.3) * (301.9 - 322.9)) * 0.5 * 0.00694$
OPEN TO BELOW (Non-living area)	108	$-\left((335.3 + 335.3) * (367.2 - 557.4) + (335.3 + 341.3) * (557.4 - 563.4) + (341.3 + 341.3) * (563.4 - 589.4) + (341.3 + 235.3) * (589.4 - 589.4) + (235.3 + 235.3) * (589.4 - 515.5) + (235.3 + 280.6) * (515.5 - 515.5) + (280.6 + 283.2) * (515.5 - 514.9) + (283.2 + 285.3) * (514.9 - 513.3) + (285.3 + 286.5) * (513.3 - 510.8) + (286.5 + 286.5) * (510.8 - 508.2) + (286.5 + 285.3) * (508.2 - 505.7) + (285.3 + 283.2) * (505.7 - 504.1) + (283.2 + 282.8) * (504.1 - 503.9) + (282.8 + 280.7) * (503.9 - 503.1) + (280.7 + 280.9) * (503.1 - 367.2) + (280.9 + 335.3) * (367.2 - 367.2)) * 0.5 * 0.00694$
OPEN TO BELOW (Non-living area)	267	$-\left((475.1 + 475.1) * (161.7 - 322.9) + (475.1 + 241.3) * (322.9 - 322.9) + (241.3 + 241.3) * (322.9 - 301.9) + (241.3 + 235.3) * (301.9 - 295.9) + (235.3 + 235.3) * (295.9 - 161.7) + (235.3 + 475.1) * (161.7 - 161.7)) * 0.5 * 0.00694$