

Home data report

**3827 Watson Drive, New Port Richey, Pasco County, Florida,
United States, 34655**



Total Area: 1564 sq. ft

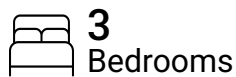
1st Floor: 1564 sq. ft

Excluded: Garage 410 sq. ft, Covered screened porch 713 sq. ft, Porch 28 sq. ft, Walls: 170 sq. ft

Property summary



1
Floors



3
Bedrooms



2
Bathrooms



1
Garages

Home data report

3827 Watson Drive, New Port Richey, Pasco County, Florida, United States, 34655



Room dimensions

Floor 1

Total:1564sqft

Excluded: 1151sqft

#		Dimensions	sqft	Counted as living area
1	W.I.C.	6'2" x 6'1"	38 sq. ft	Yes
2	Bedroom	12'6" x 11'8"	133 sq. ft	Yes
3	Laundry	5'3" x 10'10"	57 sq. ft	Yes
4	Bedroom	12'4" x 10'10"	134 sq. ft	Yes
5	Bath	5'6" x 11'8"	52 sq. ft	Yes
6	Swimming Pool	29'10" x 11'6"	330 sq. ft	No
7	Kitchen	9'0" x 11'4"	101 sq. ft	Yes
8	Living Room	20'0" x 18'4"	336 sq. ft	Yes
9	Covered Screened Porch	41'2" x 28'1"	1042 sq. ft	No
10	Bath	6'2" x 5'9"	36 sq. ft	Yes

Home data report

**3827 Watson Drive, New Port Richey, Pasco County, Florida,
United States, 34655**

#		Dimensions	sqft	Counted as living area
11	Breakfast Nook	14'2" x 11'11"	150 sq. ft	Yes
12	Dining Area	10'2" x 16'8"	170 sq. ft	Yes
13	Foyer	5'10" x 6'1"	35 sq. ft	Yes
14	Primary Bedroom	12'0" x 15'10"	187 sq. ft	Yes
15	Garage	20'3" x 20'3"	410 sq. ft	No
16	Porch	5'6" x 5'1"	28 sq. ft	No
17	Bath	8'8" x 5'1"	44 sq. ft	Yes

3827 Watson Drive, New Port Richey, Pasco County, Florida,
United States, 34655

1 Floor 1 - W.I.C.



Dimensions: 6'2" x 6'1"
Area: 38 sq. ft
Counted as living area: Yes

Heated: Yes
Finished: Yes
Enclosed: Yes
Contiguous: Yes
Permitted: Yes
Wet space: No
Addition: No
Conversion: No

2 Floor 1 - Bedroom



Dimensions: 12'6" x 11'8"
Area: 133 sq. ft
Counted as living area: Yes

Heated: Yes
Finished: Yes
Enclosed: Yes
Contiguous: Yes
Permitted: Yes
Wet space: No
Addition: No
Conversion: No

3827 Watson Drive, New Port Richey, Pasco County, Florida,
United States, 34655

3 Floor 1 - Laundry



Dimensions: 5'3" x 10'10"
Area: 57 sq. ft
Counted as living area: Yes

Heated: Yes
Finished: Yes
Enclosed: Yes
Contiguous: Yes
Permitted: Yes
Wet space: No
Addition: No
Conversion: No

4 Floor 1 - Bedroom



Dimensions: 12'4" x 10'10"
Area: 134 sq. ft
Counted as living area: Yes

Heated: Yes
Finished: Yes
Enclosed: Yes
Contiguous: Yes
Permitted: Yes
Wet space: No
Addition: No
Conversion: No

5 Floor 1 - Bath



Dimensions: 5'6" x 11'8"
Area: 52 sq. ft
Counted as living area: Yes

Heated: Yes
Finished: Yes
Enclosed: Yes
Contiguous: Yes
Permitted: Yes
Wet space: Yes
Addition: No
Conversion: No

3827 Watson Drive, New Port Richey, Pasco County, Florida,
United States, 34655

6 Floor 1 - Swimming Pool



Dimensions: 29'10" x 11'6"
Area: 330 sq. ft
Counted as living area: No

Heated: No
Finished: No
Enclosed: No
Contiguous: Yes
Permitted: No
Wet space: No
Addition: No
Conversion: No

7 Floor 1 - Kitchen



Dimensions: 9'0" x 11'4"
Area: 101 sq. ft
Counted as living area: Yes

Heated: Yes
Finished: Yes
Enclosed: Yes
Contiguous: Yes
Permitted: Yes
Wet space: No
Addition: No
Conversion: No

8 Floor 1 - Living Room

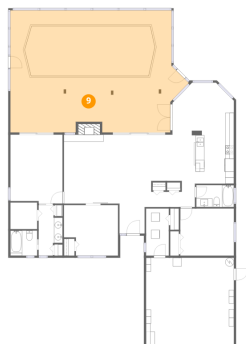


Dimensions: 20'0" x 18'4"
Area: 336 sq. ft
Counted as living area: Yes

Heated: Yes
Finished: Yes
Enclosed: Yes
Contiguous: Yes
Permitted: Yes
Wet space: No
Addition: No
Conversion: No

3827 Watson Drive, New Port Richey, Pasco County, Florida,
United States, 34655

9 Floor 1 - Covered Screened Porch



Dimensions: 41'2" x 28'1"
Area: 1042 sq. ft
Counted as living area: No

Heated: No
Finished: No
Enclosed: No
Contiguous: Yes
Permitted: Yes
Wet space: No
Addition: No
Conversion: No

10 Floor 1 - Bath



Dimensions: 6'2" x 5'9"
Area: 36 sq. ft
Counted as living area: Yes

Heated: Yes
Finished: Yes
Enclosed: Yes
Contiguous: Yes
Permitted: Yes
Wet space: Yes
Addition: No
Conversion: No

11 Floor 1 - Breakfast Nook



Dimensions: 14'2" x 11'11"
Area: 150 sq. ft
Counted as living area: Yes

Heated: Yes
Finished: Yes
Enclosed: Yes
Contiguous: Yes
Permitted: Yes
Wet space: No
Addition: No
Conversion: No

3827 Watson Drive, New Port Richey, Pasco County, Florida,
United States, 34655

12 Floor 1 - Dining Area



Dimensions: 10'2" x 16'8"
Area: 170 sq. ft
Counted as living area: Yes

Heated: Yes
Finished: Yes
Enclosed: Yes
Contiguous: Yes
Permitted: Yes
Wet space: No
Addition: No
Conversion: No

13 Floor 1 - Foyer



Dimensions: 5'10" x 6'1"
Area: 35 sq. ft
Counted as living area: Yes

Heated: Yes
Finished: Yes
Enclosed: Yes
Contiguous: Yes
Permitted: Yes
Wet space: No
Addition: No
Conversion: No

14 Floor 1 - Primary Bedroom



Dimensions: 12'0" x 15'10"
Area: 187 sq. ft
Counted as living area: Yes

Heated: Yes
Finished: Yes
Enclosed: Yes
Contiguous: Yes
Permitted: Yes
Wet space: No
Addition: No
Conversion: No

3827 Watson Drive, New Port Richey, Pasco County, Florida,
United States, 34655

15 Floor 1 - Garage



Dimensions: 20'3" x 20'3"
Area: 410 sq. ft
Counted as living area: No

Heated: No
Finished: No
Enclosed: Yes
Contiguous: Yes
Permitted: Yes
Wet space: No
Addition: No
Conversion: No

16 Floor 1 - Porch



Dimensions: 5'6" x 5'1"
Area: 28 sq. ft
Counted as living area: No

Heated: No
Finished: No
Enclosed: No
Contiguous: Yes
Permitted: Yes
Wet space: No
Addition: No
Conversion: No

17 Floor 1 - Bath



Dimensions: 8'8" x 5'1"
Area: 44 sq. ft
Counted as living area: Yes

Heated: Yes
Finished: Yes
Enclosed: Yes
Contiguous: Yes
Permitted: Yes
Wet space: Yes
Addition: No
Conversion: No