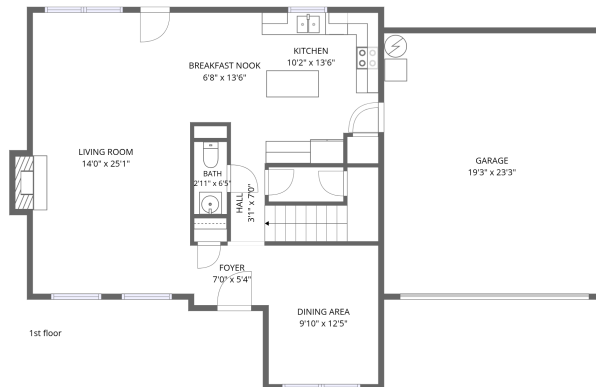
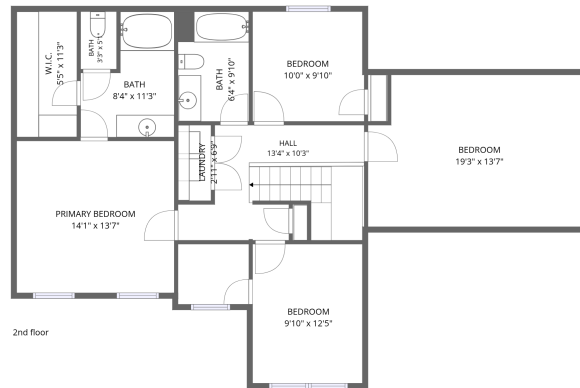


## Home data report

7124 Grizzly Creek Lane, Idlewood Acres, Powell, Knox County, Tennessee, United States, 37849



**Total Area: 1994 sq. ft**

1st Floor: 864 sq. ft, 2nd Floor: 1130 sq. ft

Excluded: Garage 449 sq. ft, Fireplace 9 sq. ft, Walls: 178 sq. ft

## Property summary



**2** Floors



**4** Bedrooms



**2** Bathrooms

Home data report

**7124 Grizzly Creek Lane, Idlewood Acres, Powell, Knox County,  
Tennessee, United States, 37849**



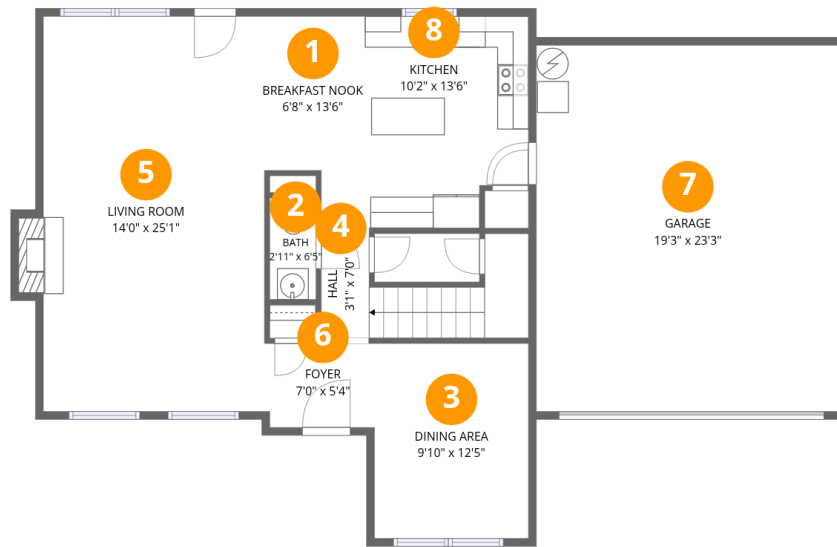
**1**  
Half baths



**1**  
Garages

## Home data report

7124 Grizzly Creek Lane, Idlewood Acres, Powell, Knox County, Tennessee, United States, 37849



## Room dimensions

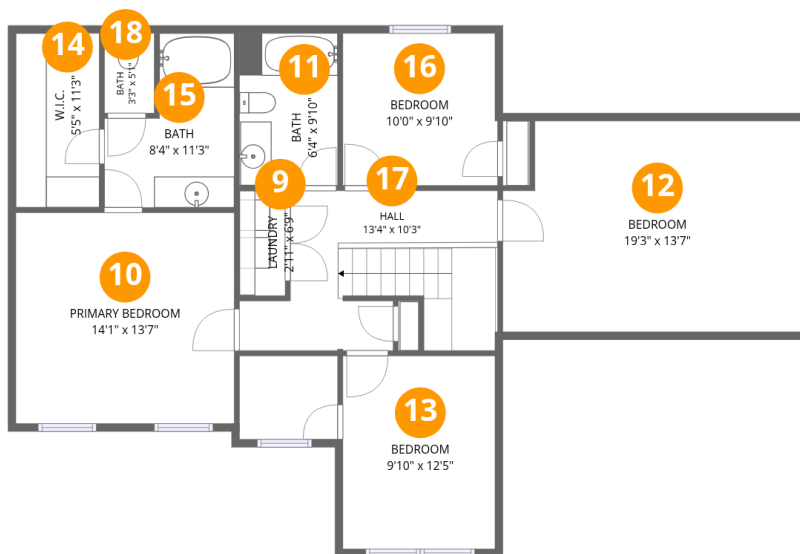
Floor 1

Total:864sqft Excluded: 458sqft

#		Dimensions	sqft	Counted as living area
1	Breakfast Nook	6'8" x 13'6"	76 sq. ft	Yes
2	Bath	2'11" x 6'5"	19 sq. ft	Yes
3	Dining Area	9'10" x 12'5"	121 sq. ft	Yes
4	Hall	3'1" x 7'0"	64 sq. ft	Yes
5	Living Room	14'0" x 25'1"	361 sq. ft	Yes
6	Foyer	7'0" x 5'4"	37 sq. ft	Yes
7	Garage	19'3" x 23'3"	449 sq. ft	No
8	Kitchen	10'2" x 13'6"	128 sq. ft	Yes

Home data report

7124 Grizzly Creek Lane, Idlewood Acres, Powell, Knox County, Tennessee, United States, 37849



## Room dimensions

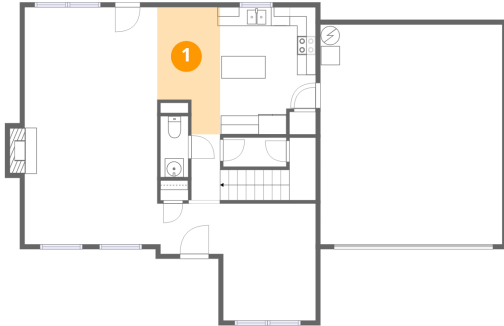
Floor 2

Total: 1130sqft Excluded: 0sqft

#		Dimensions	sqft	Counted as living area
9	Laundry	2'11" x 6'9"	20 sq. ft	Yes
10	Primary Bedroom	14'1" x 13'7"	191 sq. ft	Yes
11	Bath	6'4" x 9'10"	62 sq. ft	Yes
12	Bedroom	19'3" x 13'7"	252 sq. ft	Yes
13	Bedroom	9'10" x 12'5"	122 sq. ft	Yes
14	W.I.C.	5'5" x 11'3"	60 sq. ft	Yes
15	Bath	8'4" x 11'3"	74 sq. ft	Yes
16	Bedroom	10'0" x 9'10"	97 sq. ft	Yes
17	Hall	13'4" x 10'3"	140 sq. ft	Yes
18	Bath	3'3" x 5'1"	17 sq. ft	Yes

7124 Grizzly Creek Lane, Idlewood Acres, Powell, Knox County, Tennessee, United States, 37849

**1** Floor 1 - Breakfast Nook



Dimensions: 6'8" x 13'6"  
Area: 76 sq. ft  
Counted as living area: Yes

Heated: Yes  
Finished: Yes  
Enclosed: Yes  
Contiguous: Yes  
Permitted: Yes  
Wet space: No  
Addition: No  
Conversion: No

**2** Floor 1 - Bath

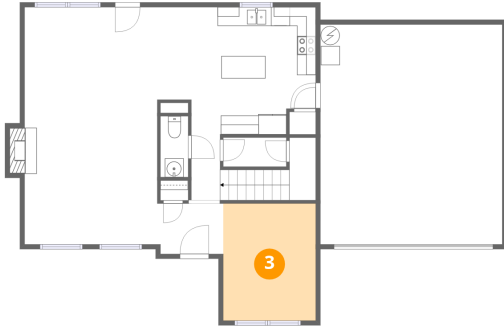


Dimensions: 2'11" x 6'5"  
Area: 19 sq. ft  
Counted as living area: Yes

Heated: Yes  
Finished: Yes  
Enclosed: Yes  
Contiguous: Yes  
Permitted: Yes  
Wet space: Yes  
Addition: No  
Conversion: No

7124 Grizzly Creek Lane, Idlewood Acres, Powell, Knox County, Tennessee, United States, 37849

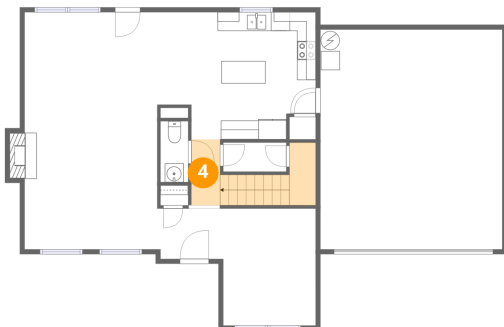
### 3 Floor 1 - Dining Area



Dimensions: 9'10" x 12'5"  
Area: 121 sq. ft  
Counted as living area: Yes

Heated: Yes  
Finished: Yes  
Enclosed: Yes  
Contiguous: Yes  
Permitted: Yes  
Wet space: No  
Addition: No  
Conversion: No

### 4 Floor 1 - Hall



Dimensions: 3'1" x 7'0"  
Area: 64 sq. ft  
Counted as living area: Yes

Heated: Yes  
Finished: Yes  
Enclosed: Yes  
Contiguous: Yes  
Permitted: Yes  
Wet space: No  
Addition: No  
Conversion: No

### 5 Floor 1 - Living Room



Dimensions: 14'0" x 25'1"  
Area: 361 sq. ft  
Counted as living area: Yes

Heated: Yes  
Finished: Yes  
Enclosed: Yes  
Contiguous: Yes  
Permitted: Yes  
Wet space: No  
Addition: No  
Conversion: No

7124 Grizzly Creek Lane, Idlewood Acres, Powell, Knox County, Tennessee, United States, 37849

**6** Floor 1 - Foyer



Dimensions: 7'0" x 5'4"  
Area: 37 sq. ft  
Counted as living area: Yes

Heated: Yes  
Finished: Yes  
Enclosed: Yes  
Contiguous: Yes  
Permitted: Yes  
Wet space: No  
Addition: No  
Conversion: No

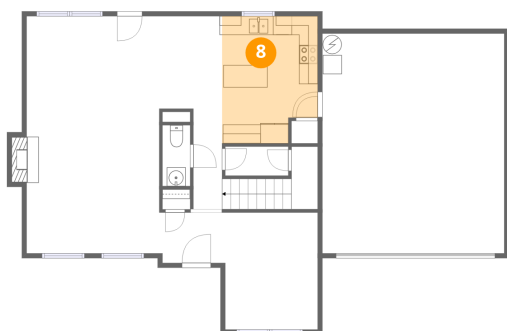
**7** Floor 1 - Garage



Dimensions: 19'3" x 23'3"  
Area: 449 sq. ft  
Counted as living area: No

Heated: No  
Finished: No  
Enclosed: Yes  
Contiguous: Yes  
Permitted: Yes  
Wet space: No  
Addition: No  
Conversion: No

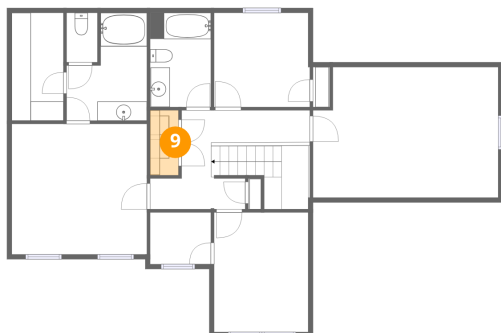
**8** Floor 1 - Kitchen



Dimensions: 10'2" x 13'6"  
Area: 128 sq. ft  
Counted as living area: Yes

Heated: Yes  
Finished: Yes  
Enclosed: Yes  
Contiguous: Yes  
Permitted: Yes  
Wet space: No  
Addition: No  
Conversion: No

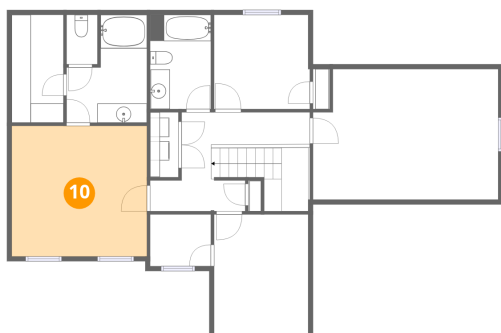
### 9 Floor 2 - Laundry



Dimensions: 2'11" x 6'9"  
Area: 20 sq. ft  
Counted as living area: Yes

Heated: Yes  
Finished: Yes  
Enclosed: Yes  
Contiguous: Yes  
Permitted: Yes  
Wet space: No  
Addition: No  
Conversion: No

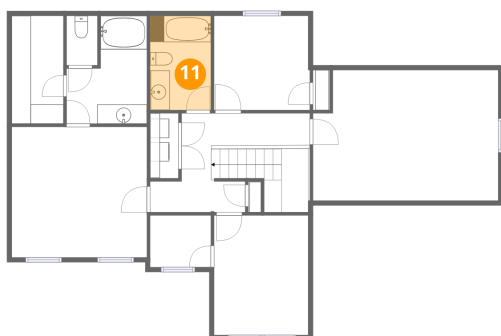
### 10 Floor 2 - Primary Bedroom



Dimensions: 14'1" x 13'7"  
Area: 191 sq. ft  
Counted as living area: Yes

Heated: Yes  
Finished: Yes  
Enclosed: Yes  
Contiguous: Yes  
Permitted: Yes  
Wet space: No  
Addition: No  
Conversion: No

### 11 Floor 2 - Bath

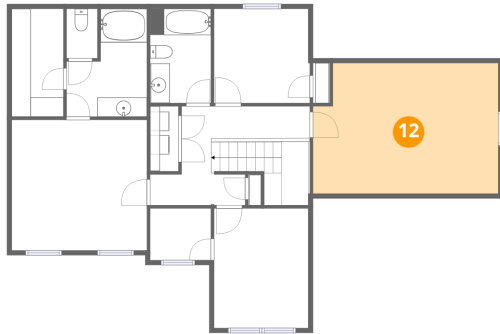


Dimensions: 6'4" x 9'10"  
Area: 62 sq. ft  
Counted as living area: Yes

Heated: Yes  
Finished: Yes  
Enclosed: Yes  
Contiguous: Yes  
Permitted: Yes  
Wet space: Yes  
Addition: No  
Conversion: No

7124 Grizzly Creek Lane, Idlewood Acres, Powell, Knox County, Tennessee, United States, 37849

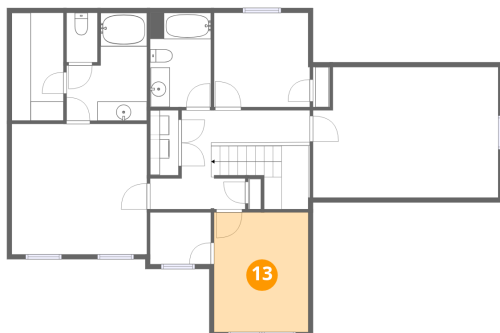
**12** Floor 2 - Bedroom



Dimensions: 19'3" x 13'7"  
Area: 252 sq. ft  
Counted as living area: Yes

Heated: Yes  
Finished: Yes  
Enclosed: Yes  
Contiguous: Yes  
Permitted: Yes  
Wet space: No  
Addition: No  
Conversion: No

**13** Floor 2 - Bedroom



Dimensions: 9'10" x 12'5"  
Area: 122 sq. ft  
Counted as living area: Yes

Heated: Yes  
Finished: Yes  
Enclosed: Yes  
Contiguous: Yes  
Permitted: Yes  
Wet space: No  
Addition: No  
Conversion: No

**14** Floor 2 - W.I.C.

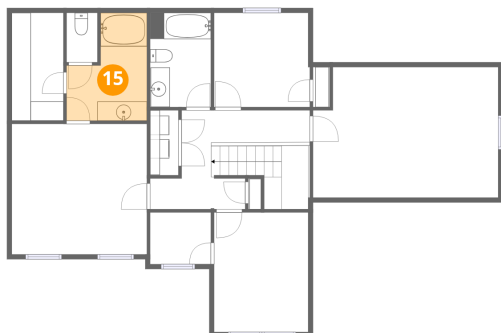


Dimensions: 5'5" x 11'3"  
Area: 60 sq. ft  
Counted as living area: Yes

Heated: Yes  
Finished: Yes  
Enclosed: Yes  
Contiguous: Yes  
Permitted: Yes  
Wet space: No  
Addition: No  
Conversion: No

7124 Grizzly Creek Lane, Idlewood Acres, Powell, Knox County, Tennessee, United States, 37849

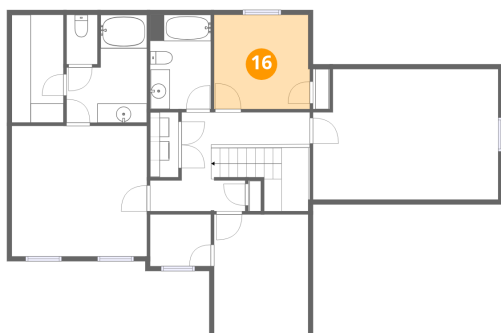
### 15 Floor 2 - Bath



Dimensions: 8'4" x 11'3"  
Area: 74 sq. ft  
Counted as living area: Yes

Heated: Yes  
Finished: Yes  
Enclosed: Yes  
Contiguous: Yes  
Permitted: Yes  
Wet space: Yes  
Addition: No  
Conversion: No

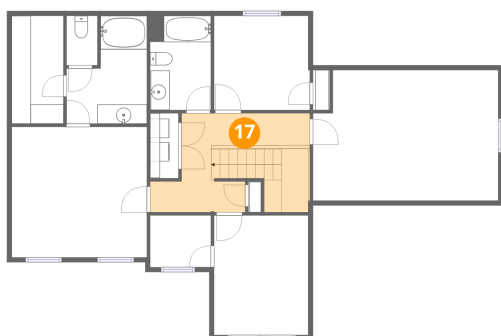
### 16 Floor 2 - Bedroom



Dimensions: 10'0" x 9'10"  
Area: 97 sq. ft  
Counted as living area: Yes

Heated: Yes  
Finished: Yes  
Enclosed: Yes  
Contiguous: Yes  
Permitted: Yes  
Wet space: No  
Addition: No  
Conversion: No

### 17 Floor 2 - Hall



Dimensions: 13'4" x 10'3"  
Area: 140 sq. ft  
Counted as living area: Yes

Heated: Yes  
Finished: Yes  
Enclosed: Yes  
Contiguous: Yes  
Permitted: Yes  
Wet space: No  
Addition: No  
Conversion: No

7124 Grizzly Creek Lane, Idlewood Acres, Powell, Knox County,  
Tennessee, United States, 37849

**18** Floor 2 - Bath



Dimensions: 3'3" x 5'1"  
Area: 17 sq. ft  
Counted as living area: Yes

Heated: Yes  
Finished: Yes  
Enclosed: Yes  
Contiguous: Yes  
Permitted: Yes  
Wet space: Yes  
Addition: No  
Conversion: No