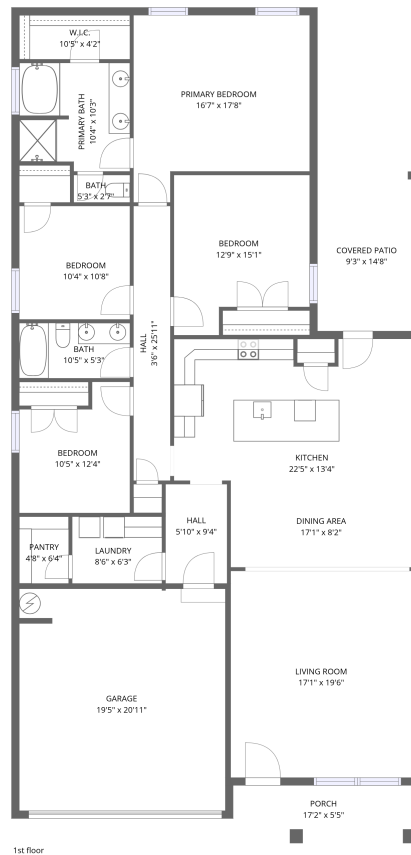


Home data report

15706 Mizewell Ln NW, Harvest, Limestone County,  
Alabama, United States, 35749

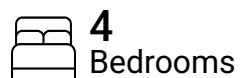


**Total Area: 2150 sq. ft**

1st Floor: 2150 sq. ft

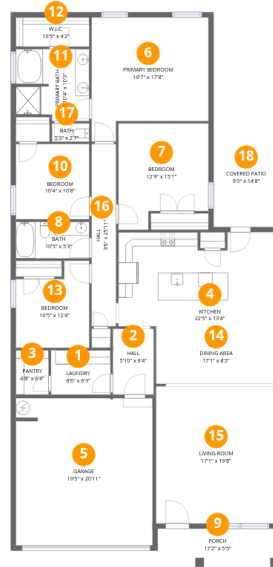
Excluded: Garage 438 sq. ft, Porch 94 sq. ft, Covered patio 136 sq. ft

## Property summary



Scan captured on Fri, 08 May 2026 15:41:41 GMT

FLOOR PLAN CREATED BY CUBICASA APP. MEASUREMENTS DEEMED HIGHLY RELIABLE BUT NOT GUARANTEED.



## Room dimensions

Floor 1

Total:2150sqft

Excluded: 668sqft

#		Dimensions	sqft	Counted as living area
1	Laundry	8'6" x 6'3"	53 sq. ft	Yes
2	Hall	5'10" x 9'4"	54 sq. ft	Yes
3	Pantry	4'8" x 6'4"	29 sq. ft	Yes
4	Kitchen	22'5" x 13'4"	288 sq. ft	Yes
5	Garage	19'5" x 20'11"	404 sq. ft	No
6	Primary Bedroom	16'7" x 17'8"	254 sq. ft	Yes
7	Bedroom	12'9" x 15'1"	170 sq. ft	Yes
8	Bath	10'5" x 5'3"	54 sq. ft	Yes
9	Porch	17'2" x 5'5"	94 sq. ft	No
10	Bedroom	10'4" x 10'8"	111 sq. ft	Yes
11	Primary Bath	10'4" x 10'3"	100 sq. ft	Yes

**15706 Mizewell Ln NW, Harvest, Limestone County,  
Alabama, United States, 35749**

#		Dimensions	sqft	Counted as living area
12	W.I.C.	10'5" x 4'2"	43 sq. ft	Yes
13	Bedroom	10'5" x 12'4"	111 sq. ft	Yes
14	Dining Area	17'1" x 8'2"	139 sq. ft	Yes
15	Living Room	17'1" x 19'6"	332 sq. ft	Yes
16	Hall	3'6" x 25'11"	90 sq. ft	Yes
17	Bath	5'3" x 2'7"	14 sq. ft	Yes
18	Covered Patio	9'3" x 14'8"	136 sq. ft	No



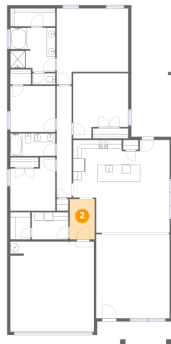
## 1 Floor 1 - Laundry



Dimensions: 8'6" x 6'3"  
Area: 53 sq. ft  
Counted as living area: Yes

Heated: Yes  
Finished: Yes  
Enclosed: Yes  
Contiguous: Yes  
Permitted: Yes  
Wet space: No  
Addition: No  
Conversion: No

## 2 Floor 1 - Hall



Dimensions: 5'10" x 9'4"  
Area: 54 sq. ft  
Counted as living area: Yes

Heated: Yes  
Finished: Yes  
Enclosed: Yes  
Contiguous: Yes  
Permitted: Yes  
Wet space: No  
Addition: No  
Conversion: No



### 3 Floor 1 - Pantry



Dimensions: 4'8" x 6'4"  
Area: 29 sq. ft  
Counted as living area: Yes

Heated: Yes  
Finished: Yes  
Enclosed: Yes  
Contiguous: Yes  
Permitted: Yes  
Wet space: No  
Addition: No  
Conversion: No

### 4 Floor 1 - Kitchen



Dimensions: 22'5" x 13'4"  
Area: 288 sq. ft  
Counted as living area: Yes

Heated: Yes  
Finished: Yes  
Enclosed: Yes  
Contiguous: Yes  
Permitted: Yes  
Wet space: No  
Addition: No  
Conversion: No

### 5 Floor 1 - Garage



Dimensions: 19'5" x 20'11"  
Area: 404 sq. ft  
Counted as living area: No

Heated: No  
Finished: No  
Enclosed: Yes  
Contiguous: Yes  
Permitted: Yes  
Wet space: No  
Addition: No  
Conversion: No



## 6 Floor 1 - Primary Bedroom



Dimensions: 16'7" x 17'8"  
Area: 254 sq. ft  
Counted as living area: Yes

Heated: Yes  
Finished: Yes  
Enclosed: Yes  
Contiguous: Yes  
Permitted: Yes  
Wet space: No  
Addition: No  
Conversion: No

## 7 Floor 1 - Bedroom



Dimensions: 12'9" x 15'1"  
Area: 170 sq. ft  
Counted as living area: Yes

Heated: Yes  
Finished: Yes  
Enclosed: Yes  
Contiguous: Yes  
Permitted: Yes  
Wet space: No  
Addition: No  
Conversion: No

## 8 Floor 1 - Bath



Dimensions: 10'5" x 5'3"  
Area: 54 sq. ft  
Counted as living area: Yes

Heated: Yes  
Finished: Yes  
Enclosed: Yes  
Contiguous: Yes  
Permitted: Yes  
Wet space: Yes  
Addition: No  
Conversion: No



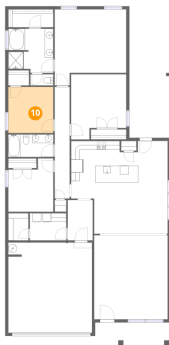
**9** Floor 1 - Porch



Dimensions: 17'2" x 5'5"  
Area: 94 sq. ft  
Counted as living area: No

Heated: No  
Finished: No  
Enclosed: No  
Contiguous: Yes  
Permitted: Yes  
Wet space: No  
Addition: No  
Conversion: No

**10** Floor 1 - Bedroom



Dimensions: 10'4" x 10'8"  
Area: 111 sq. ft  
Counted as living area: Yes

Heated: Yes  
Finished: Yes  
Enclosed: Yes  
Contiguous: Yes  
Permitted: Yes  
Wet space: No  
Addition: No  
Conversion: No

**11** Floor 1 - Primary Bath



Dimensions: 10'4" x 10'3"  
Area: 100 sq. ft  
Counted as living area: Yes

Heated: Yes  
Finished: Yes  
Enclosed: Yes  
Contiguous: Yes  
Permitted: Yes  
Wet space: Yes  
Addition: No  
Conversion: No



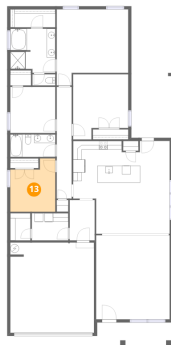
**12** Floor 1 - W.I.C.



Dimensions: 10'5" x 4'2"  
Area: 43 sq. ft  
Counted as living area: Yes

Heated: Yes  
Finished: Yes  
Enclosed: Yes  
Contiguous: Yes  
Permitted: Yes  
Wet space: No  
Addition: No  
Conversion: No

**13** Floor 1 - Bedroom



Dimensions: 10'5" x 12'4"  
Area: 111 sq. ft  
Counted as living area: Yes

Heated: Yes  
Finished: Yes  
Enclosed: Yes  
Contiguous: Yes  
Permitted: Yes  
Wet space: No  
Addition: No  
Conversion: No

**14** Floor 1 - Dining Area



Dimensions: 17'1" x 8'2"  
Area: 139 sq. ft  
Counted as living area: Yes

Heated: Yes  
Finished: Yes  
Enclosed: Yes  
Contiguous: Yes  
Permitted: Yes  
Wet space: No  
Addition: No  
Conversion: No



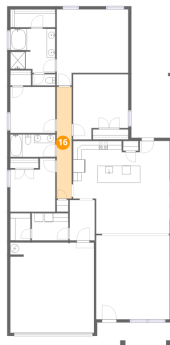
**15** Floor 1 - Living Room



Dimensions: 17'1" x 19'6"  
Area: 332 sq. ft  
Counted as living area: Yes

Heated: Yes  
Finished: Yes  
Enclosed: Yes  
Contiguous: Yes  
Permitted: Yes  
Wet space: No  
Addition: No  
Conversion: No

**16** Floor 1 - Hall



Dimensions: 3'6" x 25'11"  
Area: 90 sq. ft  
Counted as living area: Yes

Heated: Yes  
Finished: Yes  
Enclosed: Yes  
Contiguous: Yes  
Permitted: Yes  
Wet space: No  
Addition: No  
Conversion: No

**17** Floor 1 - Bath



Dimensions: 5'3" x 2'7"  
Area: 14 sq. ft  
Counted as living area: Yes

Heated: Yes  
Finished: Yes  
Enclosed: Yes  
Contiguous: Yes  
Permitted: Yes  
Wet space: Yes  
Addition: No  
Conversion: No



**18** Floor 1 - Covered Patio



Dimensions: 9'3" x 14'8"  
Area: 136 sq. ft  
Counted as living area: No

Heated: No  
Finished: No  
Enclosed: No  
Contiguous: Yes  
Permitted: Yes  
Wet space: No  
Addition: No  
Conversion: No