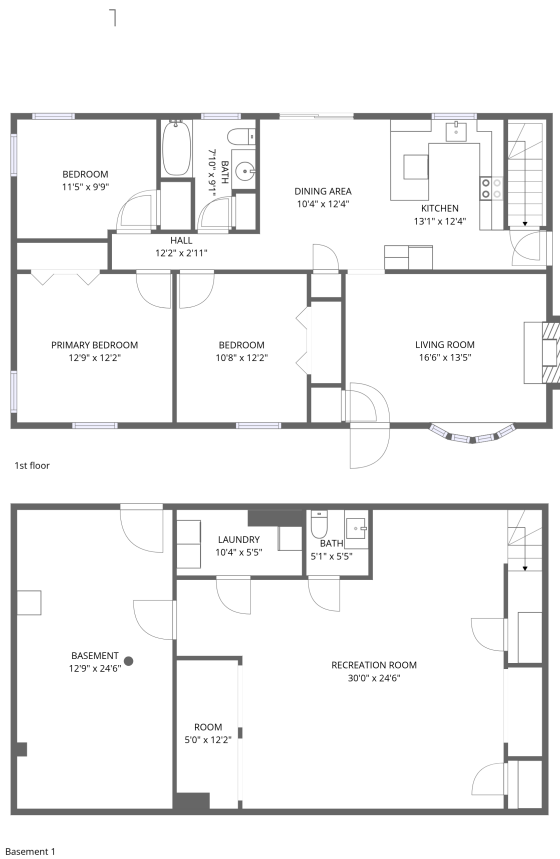


Home data report

**63 Hebb Street, Brayton Point, Somerset, Bristol County,  
Massachusetts, United States, 02725**




**Total Area: 1811 sq. ft**

Below Ground: 723 sq. ft, 1st Floor: 1088 sq. ft

Excluded: Basement 313 sq. ft, Undefined 21 sq. ft, Fireplace 9 sq. ft, Walls: 135 sq. ft

## Property summary

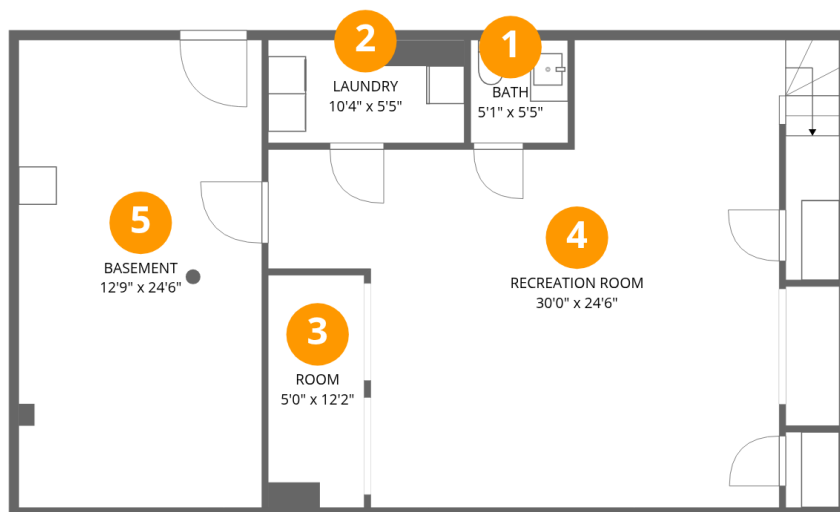
 **2**  
Floors

 **3**  
Bedrooms

 **1**  
Bathrooms

 **1**  
Half baths

63 Hebb Street, Brayton Point, Somerset, Bristol County, Massachusetts, United States, 02725



### Room dimensions

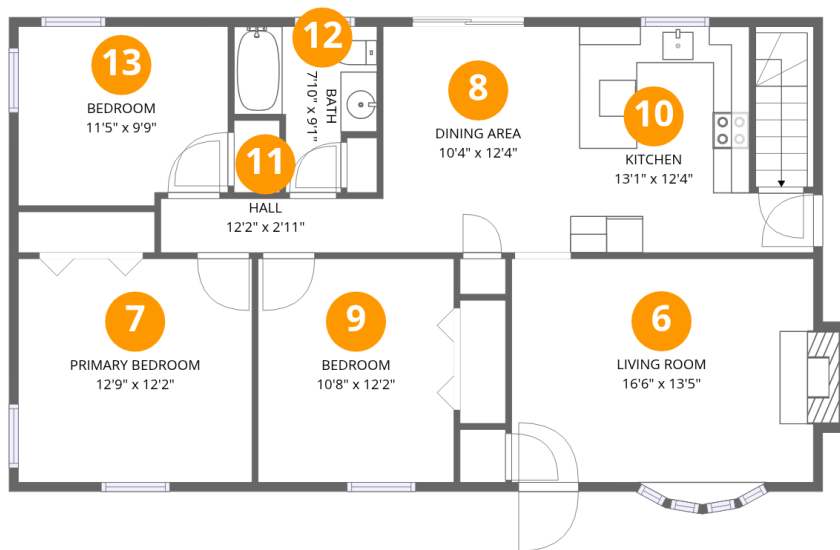
Floor 1 Below grade

Total:723sqft

Excluded: 334sqft

#		Dimensions	sqft	Counted as living area
1	Bath	5'1" x 5'5"	28 sq. ft	Yes
2	Laundry	10'4" x 5'5"	56 sq. ft	Yes
3	Room	5'0" x 12'2"	62 sq. ft	Yes
4	Recreation Room	30'0" x 24'6"	535 sq. ft	Yes
5	Basement	12'9" x 24'6"	313 sq. ft	No

**63 Hebb Street, Brayton Point, Somerset, Bristol County, Massachusetts, United States, 02725**



**Room dimensions**

Floor 2

Total:1088sqft

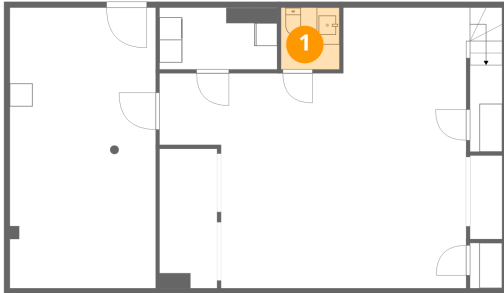
Excluded: 9sqft

#		Dimensions	sqft	Counted as living area
6	Living Room	16'6" x 13'5"	214 sq. ft	Yes
7	Primary Bedroom	12'9" x 12'2"	156 sq. ft	Yes
8	Dining Area	10'4" x 12'4"	128 sq. ft	Yes
9	Bedroom	10'8" x 12'2"	130 sq. ft	Yes
10	Kitchen	13'1" x 12'4"	130 sq. ft	Yes
11	Hall	12'2" x 2'11"	36 sq. ft	Yes
12	Bath	7'10" x 9'1"	52 sq. ft	Yes
13	Bedroom	11'5" x 9'9"	109 sq. ft	Yes

63 Hebb Street, Brayton Point, Somerset, Bristol County,  
Massachusetts, United States, 02725

**1** Floor 1 - Bath

---

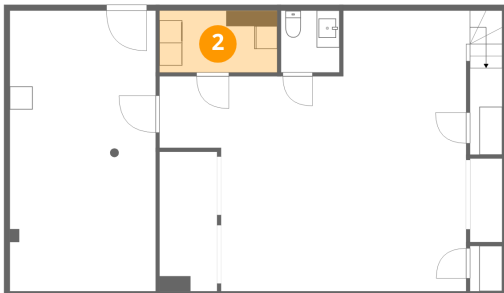


Dimensions: 5'1" x 5'5"  
Area: 28 sq. ft  
Counted as living area: Yes

Heated: Yes  
Finished: Yes  
Enclosed: Yes  
Contiguous: Yes  
Permitted: Yes  
Wet space: Yes  
Addition: No  
Conversion: No

**2** Floor 1 - Laundry

---

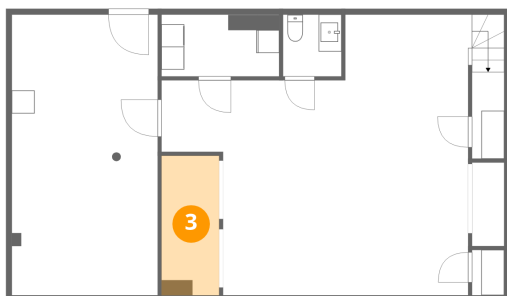


Dimensions: 10'4" x 5'5"  
Area: 56 sq. ft  
Counted as living area: Yes

Heated: Yes  
Finished: Yes  
Enclosed: Yes  
Contiguous: Yes  
Permitted: Yes  
Wet space: No  
Addition: No  
Conversion: No

63 Hebb Street, Brayton Point, Somerset, Bristol County, Massachusetts, United States, 02725

3 Floor 1 - Room



Dimensions: 5'0" x 12'2"  
Area: 62 sq. ft  
Counted as living area: Yes

Heated: Yes  
Finished: Yes  
Enclosed: Yes  
Contiguous: Yes  
Permitted: Yes  
Wet space: No  
Addition: No  
Conversion: No

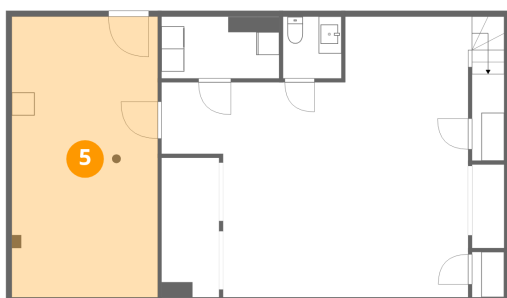
4 Floor 1 - Recreation Room



Dimensions: 30'0" x 24'6"  
Area: 535 sq. ft  
Counted as living area: Yes

Heated: Yes  
Finished: Yes  
Enclosed: Yes  
Contiguous: Yes  
Permitted: Yes  
Wet space: No  
Addition: No  
Conversion: No

5 Floor 1 - Basement

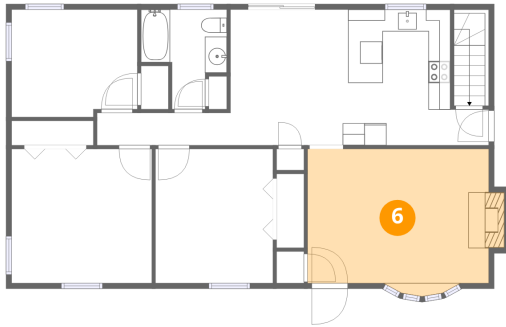


Dimensions: 12'9" x 24'6"  
Area: 313 sq. ft  
Counted as living area: No

Heated: Yes  
Finished: No  
Enclosed: Yes  
Contiguous: Yes  
Permitted: Yes  
Wet space: No  
Addition: No  
Conversion: No

63 Hebb Street, Brayton Point, Somerset, Bristol County,  
Massachusetts, United States, 02725

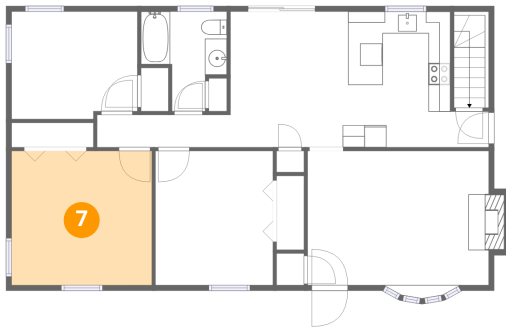
**6** Floor 2 - Living Room



Dimensions: 16'6" x 13'5"  
Area: 214 sq. ft  
Counted as living area: Yes

Heated: Yes  
Finished: Yes  
Enclosed: Yes  
Contiguous: Yes  
Permitted: Yes  
Wet space: No  
Addition: No  
Conversion: No

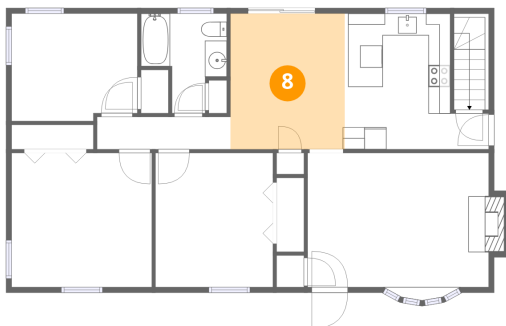
**7** Floor 2 - Primary Bedroom



Dimensions: 12'9" x 12'2"  
Area: 156 sq. ft  
Counted as living area: Yes

Heated: Yes  
Finished: Yes  
Enclosed: Yes  
Contiguous: Yes  
Permitted: Yes  
Wet space: No  
Addition: No  
Conversion: No

**8** Floor 2 - Dining Area

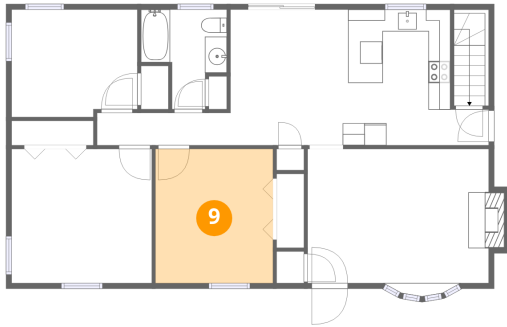


Dimensions: 10'4" x 12'4"  
Area: 128 sq. ft  
Counted as living area: Yes

Heated: Yes  
Finished: Yes  
Enclosed: Yes  
Contiguous: Yes  
Permitted: Yes  
Wet space: No  
Addition: No  
Conversion: No

63 Hebb Street, Brayton Point, Somerset, Bristol County,  
Massachusetts, United States, 02725

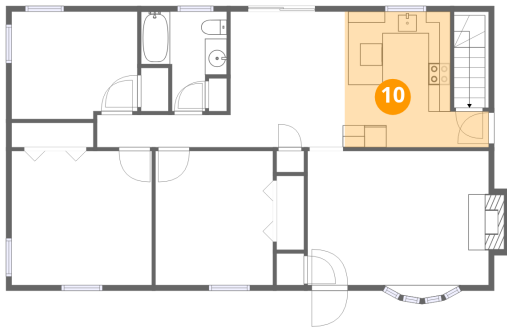
**9** Floor 2 - Bedroom



Dimensions: 10'8" x 12'2"  
Area: 130 sq. ft  
Counted as living area: Yes

Heated: Yes  
Finished: Yes  
Enclosed: Yes  
Contiguous: Yes  
Permitted: Yes  
Wet space: No  
Addition: No  
Conversion: No

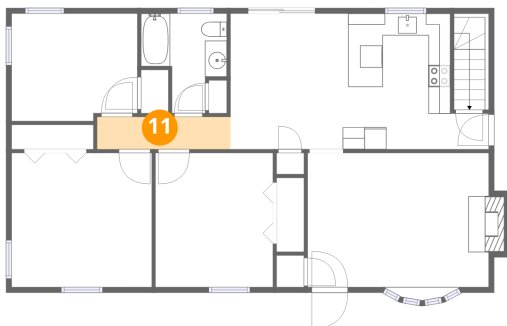
**10** Floor 2 - Kitchen



Dimensions: 13'1" x 12'4"  
Area: 130 sq. ft  
Counted as living area: Yes

Heated: Yes  
Finished: Yes  
Enclosed: Yes  
Contiguous: Yes  
Permitted: Yes  
Wet space: No  
Addition: No  
Conversion: No

**11** Floor 2 - Hall

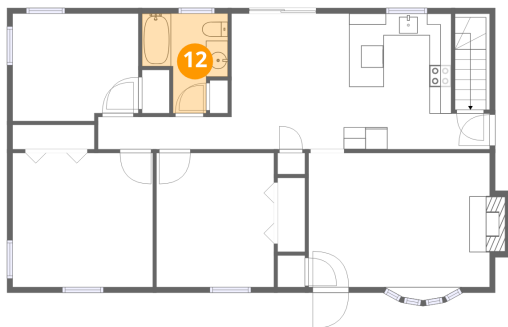


Dimensions: 12'2" x 2'11"  
Area: 36 sq. ft  
Counted as living area: Yes

Heated: Yes  
Finished: Yes  
Enclosed: Yes  
Contiguous: Yes  
Permitted: Yes  
Wet space: No  
Addition: No  
Conversion: No

63 Hebb Street, Brayton Point, Somerset, Bristol County,  
Massachusetts, United States, 02725

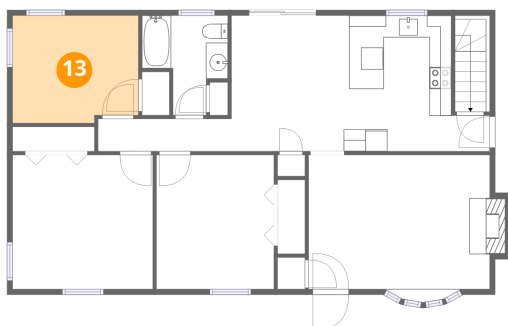
## 12 Floor 2 - Bath



Dimensions: 7'10" x 9'1"  
Area: 52 sq. ft  
Counted as living area: Yes

Heated: Yes  
Finished: Yes  
Enclosed: Yes  
Contiguous: Yes  
Permitted: Yes  
Wet space: Yes  
Addition: No  
Conversion: No

## 13 Floor 2 - Bedroom



Dimensions: 11'5" x 9'9"  
Area: 109 sq. ft  
Counted as living area: Yes

Heated: Yes  
Finished: Yes  
Enclosed: Yes  
Contiguous: Yes  
Permitted: Yes  
Wet space: No  
Addition: No  
Conversion: No