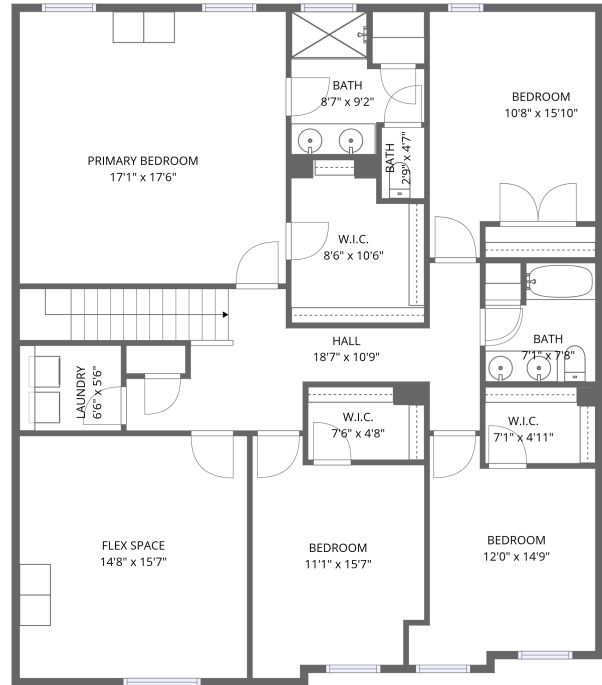
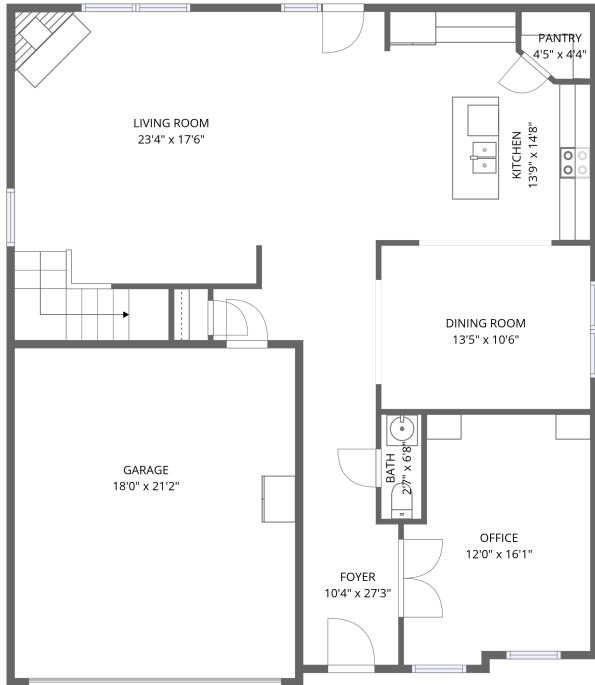


Home data report

3748 Streamside Dr, High Point, NC, US



Total Area: 2883 sq. ft

1st Floor: 1240 sq. ft, 2nd Floor: 1643 sq. ft

Excluded: Garage 403 sq. ft

Property summary

 **2** Floors

 **5** Bedrooms

 **2** Bathrooms

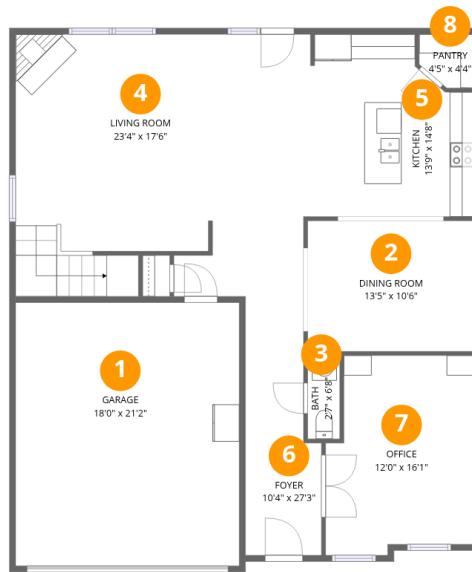
Home data report

3748 Streamside Dr, High Point, NC, US

 **1**
Half baths

 **1**
Garages

3748 Streamside Dr, High Point, NC, US



Room dimensions

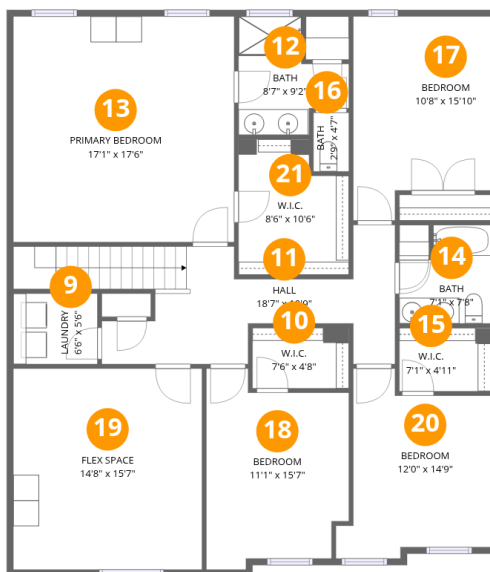
Floor 1

Total: 1240 sqft

Excluded: 403 sqft

#		Dimensions	sqft	Counted as living area
1	Garage	18'0" x 21'2"	382 sq. ft	No
2	Dining Room	13'5" x 10'6"	141 sq. ft	Yes
3	Bath	2'7" x 6'8"	17 sq. ft	Yes
4	Living Room	23'4" x 17'6"	407 sq. ft	Yes
5	Kitchen	13'9" x 14'8"	201 sq. ft	Yes
6	Foyer	10'4" x 27'3"	282 sq. ft	Yes
7	Office	12'0" x 16'1"	193 sq. ft	Yes
8	Pantry	4'5" x 4'4"	19 sq. ft	Yes

3748 Streamside Dr, High Point, NC, US



Room dimensions

Floor 2

Total: 1643 sqft Excluded: 0 sqft

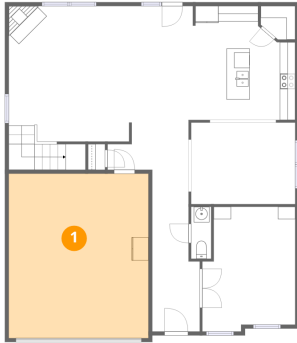
#		Dimensions	sqft	Counted as living area
9	Laundry	6'6" x 5'6"	36 sq. ft	Yes
10	W.I.C.	7'6" x 4'8"	35 sq. ft	Yes
11	Hall	18'7" x 10'9"	200 sq. ft	Yes
12	Bath	8'7" x 9'2"	79 sq. ft	Yes
13	Primary Bedroom	17'1" x 17'6"	299 sq. ft	Yes
14	Bath	7'1" x 7'8"	54 sq. ft	Yes
15	W.I.C.	7'1" x 4'11"	35 sq. ft	Yes
16	Bath	2'9" x 4'7"	13 sq. ft	Yes
17	Bedroom	10'8" x 15'10"	168 sq. ft	Yes
18	Bedroom	11'1" x 15'7"	172 sq. ft	Yes
19	Flex Space	14'8" x 15'7"	228 sq. ft	Yes

Home data report

3748 Streamside Dr,High Point,NC,US

#		Dimensions	sqft	Counted as living area
20	Bedroom	12'0" x 14'9"	177 sq. ft	Yes
21	W.I.C.	8'6" x 10'6"	90 sq. ft	Yes

1 Floor 1 - Garage



Dimensions: 18'0" x 21'2"
Area: 382 sq. ft
Counted as living area: No

Heated: No
Finished: No
Enclosed: Yes
Contiguous: Yes
Permitted: Yes
Wet space: No
Addition: No
Conversion: No

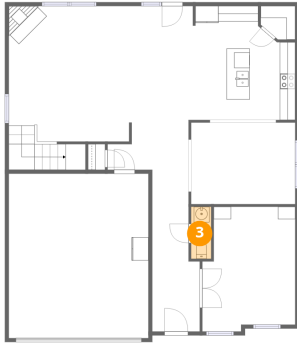
2 Floor 1 - Dining Room



Dimensions: 13'5" x 10'6"
Area: 141 sq. ft
Counted as living area: Yes

Heated: Yes
Finished: Yes
Enclosed: Yes
Contiguous: Yes
Permitted: Yes
Wet space: No
Addition: No
Conversion: No

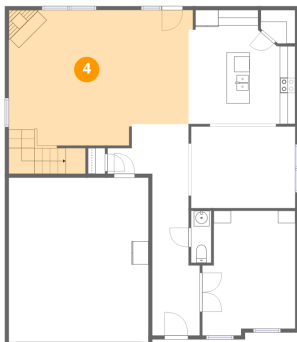
3 Floor 1 - Bath



Dimensions: 2'7" x 6'8"
Area: 17 sq. ft
Counted as living area: Yes

Heated: Yes
Finished: Yes
Enclosed: Yes
Contiguous: Yes
Permitted: Yes
Wet space: Yes
Addition: No
Conversion: No

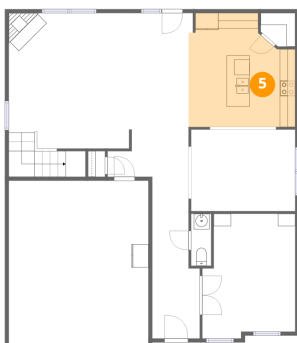
4 Floor 1 - Living Room



Dimensions: 23'4" x 17'6"
Area: 407 sq. ft
Counted as living area: Yes

Heated: Yes
Finished: Yes
Enclosed: Yes
Contiguous: Yes
Permitted: Yes
Wet space: No
Addition: No
Conversion: No

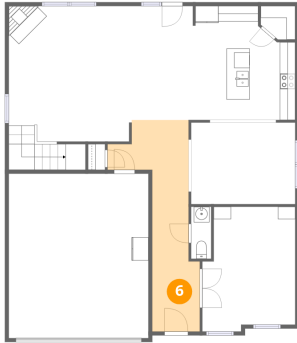
5 Floor 1 - Kitchen



Dimensions: 13'9" x 14'8"
Area: 201 sq. ft
Counted as living area: Yes

Heated: Yes
Finished: Yes
Enclosed: Yes
Contiguous: Yes
Permitted: Yes
Wet space: No
Addition: No
Conversion: No

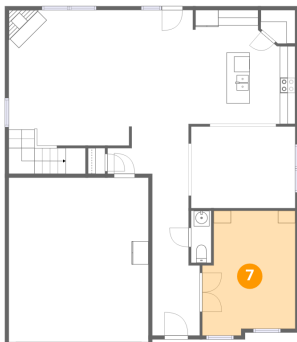
6 Floor 1 - Foyer



Dimensions: 10'4" x 27'3"
Area: 282 sq. ft
Counted as living area: Yes

Heated: Yes
Finished: Yes
Enclosed: Yes
Contiguous: Yes
Permitted: Yes
Wet space: No
Addition: No
Conversion: No

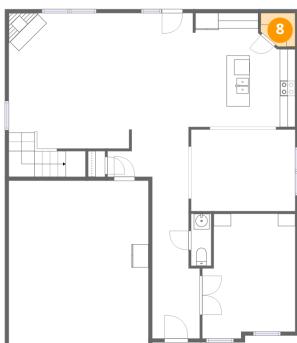
7 Floor 1 - Office



Dimensions: 12'0" x 16'1"
Area: 193 sq. ft
Counted as living area: Yes

Heated: Yes
Finished: Yes
Enclosed: Yes
Contiguous: Yes
Permitted: Yes
Wet space: No
Addition: No
Conversion: No

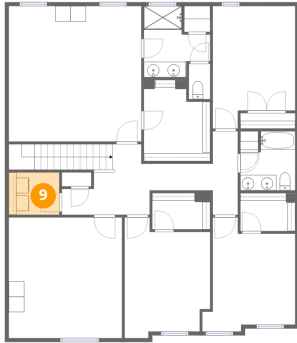
8 Floor 1 - Pantry



Dimensions: 4'5" x 4'4"
Area: 19 sq. ft
Counted as living area: Yes

Heated: Yes
Finished: Yes
Enclosed: Yes
Contiguous: Yes
Permitted: Yes
Wet space: No
Addition: No
Conversion: No

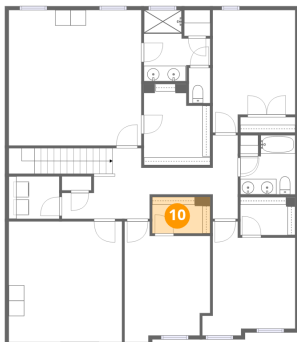
9 Floor 2 - Laundry



Dimensions: 6'6" x 5'6"
Area: 36 sq. ft
Counted as living area: Yes

Heated: Yes
Finished: Yes
Enclosed: Yes
Contiguous: Yes
Permitted: Yes
Wet space: No
Addition: No
Conversion: No

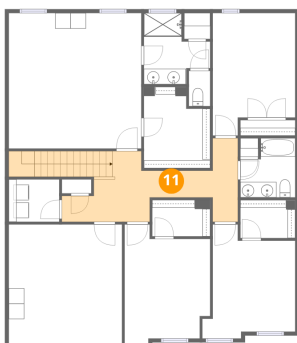
10 Floor 2 - W.I.C.



Dimensions: 7'6" x 4'8"
Area: 35 sq. ft
Counted as living area: Yes

Heated: Yes
Finished: Yes
Enclosed: Yes
Contiguous: Yes
Permitted: Yes
Wet space: No
Addition: No
Conversion: No

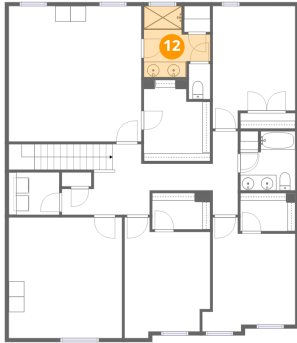
11 Floor 2 - Hall



Dimensions: 18'7" x 10'9"
Area: 200 sq. ft
Counted as living area: Yes

Heated: Yes
Finished: Yes
Enclosed: Yes
Contiguous: Yes
Permitted: Yes
Wet space: No
Addition: No
Conversion: No

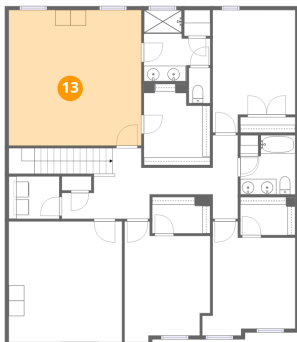
12 Floor 2 - Bath



Dimensions: 8'7" x 9'2"
Area: 79 sq. ft
Counted as living area: Yes

Heated: Yes
Finished: Yes
Enclosed: Yes
Contiguous: Yes
Permitted: Yes
Wet space: Yes
Addition: No
Conversion: No

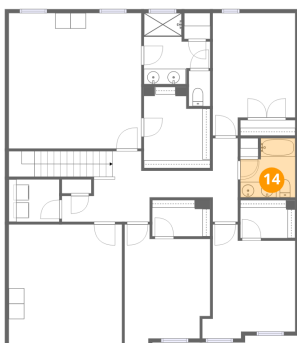
13 Floor 2 - Primary Bedroom



Dimensions: 17'1" x 17'6"
Area: 299 sq. ft
Counted as living area: Yes

Heated: Yes
Finished: Yes
Enclosed: Yes
Contiguous: Yes
Permitted: Yes
Wet space: No
Addition: No
Conversion: No

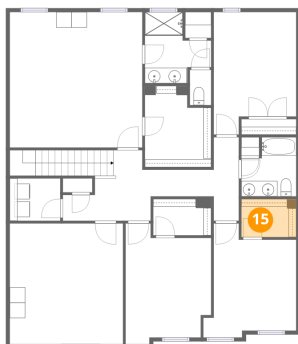
14 Floor 2 - Bath



Dimensions: 7'1" x 7'8"
Area: 54 sq. ft
Counted as living area: Yes

Heated: Yes
Finished: Yes
Enclosed: Yes
Contiguous: Yes
Permitted: Yes
Wet space: Yes
Addition: No
Conversion: No

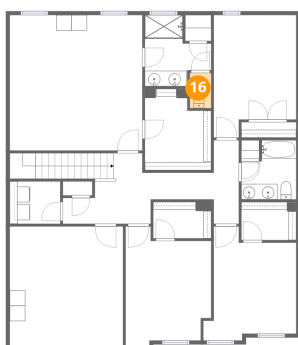
15 Floor 2 - W.I.C.



Dimensions: 7'1" x 4'11"
Area: 35 sq. ft
Counted as living area: Yes

Heated: Yes
Finished: Yes
Enclosed: Yes
Contiguous: Yes
Permitted: Yes
Wet space: No
Addition: No
Conversion: No

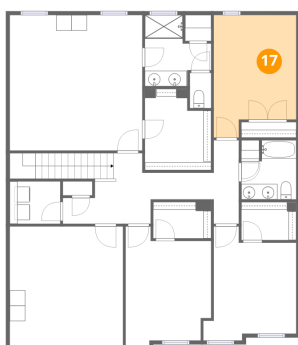
16 Floor 2 - Bath



Dimensions: 2'9" x 4'7"
Area: 13 sq. ft
Counted as living area: Yes

Heated: Yes
Finished: Yes
Enclosed: Yes
Contiguous: Yes
Permitted: Yes
Wet space: Yes
Addition: No
Conversion: No

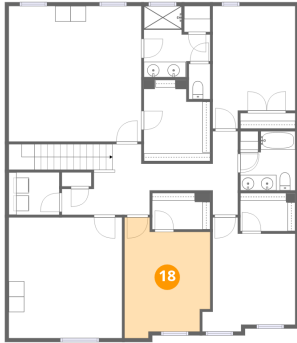
17 Floor 2 - Bedroom



Dimensions: 10'8" x 15'10"
Area: 168 sq. ft
Counted as living area: Yes

Heated: Yes
Finished: Yes
Enclosed: Yes
Contiguous: Yes
Permitted: Yes
Wet space: No
Addition: No
Conversion: No

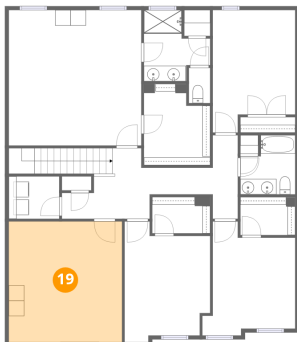
18 Floor 2 - Bedroom



Dimensions: 11'1" x 15'7"
Area: 172 sq. ft
Counted as living area: Yes

Heated: Yes
Finished: Yes
Enclosed: Yes
Contiguous: Yes
Permitted: Yes
Wet space: No
Addition: No
Conversion: No

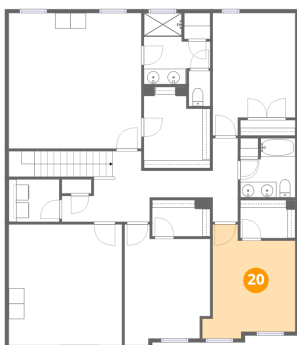
19 Floor 2 - Flex Space



Dimensions: 14'8" x 15'7"
Area: 228 sq. ft
Counted as living area: Yes

Heated: Yes
Finished: Yes
Enclosed: Yes
Contiguous: Yes
Permitted: Yes
Wet space: No
Addition: No
Conversion: No

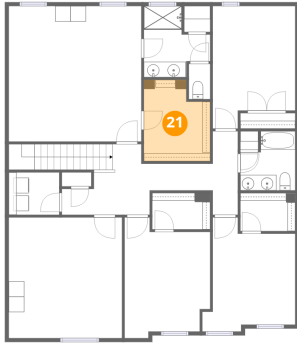
20 Floor 2 - Bedroom



Dimensions: 12'0" x 14'9"
Area: 177 sq. ft
Counted as living area: Yes

Heated: Yes
Finished: Yes
Enclosed: Yes
Contiguous: Yes
Permitted: Yes
Wet space: No
Addition: No
Conversion: No

21 Floor 2 - W.I.C.



Dimensions: 8'6" x 10'6"
Area: 90 sq. ft
Counted as living area: Yes

Heated: Yes
Finished: Yes
Enclosed: Yes
Contiguous: Yes
Permitted: Yes
Wet space: No
Addition: No
Conversion: No