

17 Mt Crescent, Angus, ON, CA



Total Area: 3048 sq. ft

Basement: 862 sq. ft, 1st Floor: 969 sq. ft, 2nd Floor: 1217 sq. ft

Excluded: Cold storage 77 sq. ft, Future bathroom 80 sq. ft, Utility 63 sq. ft, Garage 379 sq. ft, Porch 90 sq. ft, Patio 1031 sq. ft, Stairwell 21 sq. ft, Fireplace 13 sq. ft, Walls: 263 sq. ft

Property summary

 **3** Floors

 **4** Bedrooms

 **2** Bathrooms

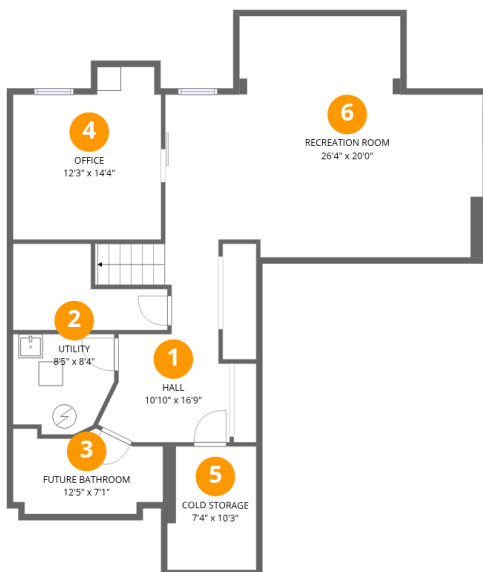
Home data report

17 Mt Crescent, Angus, ON, CA

 **1**
Half baths

 **1**
Garages

17 Mt Crescent, Angus, ON, CA



Room dimensions

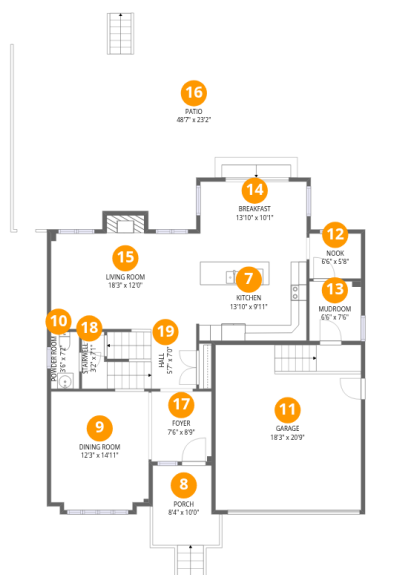
Floor 1 Below grade

Total: 862 sqft

Excluded: 220 sqft

#		Dimensions	sqft	Counted as living area
1	Hall	10'10" x 16'9"	136 sq. ft	Yes
2	Utility	8'5" x 8'4"	63 sq. ft	No
3	Future Bathroom	12'5" x 7'1"	76 sq. ft	No
4	Office	12'3" x 14'4"	158 sq. ft	Yes
5	Cold Storage	7'4" x 10'3"	75 sq. ft	No
6	Recreation Room	26'4" x 20'0"	430 sq. ft	Yes

17 Mt Crescent, Angus, ON, CA



Room dimensions

Floor 2

Total: 969sqft

Excluded: 1534sqft

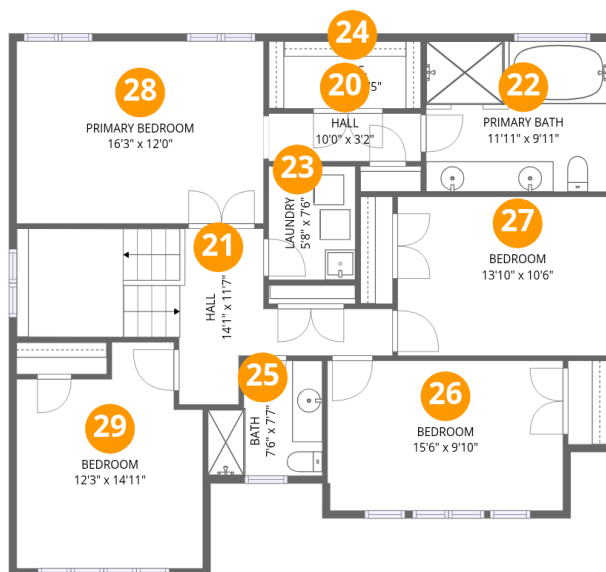
#		Dimensions	sqft	Counted as living area
7	Kitchen	13'10" x 9'11"	136 sq. ft	Yes
8	Porch	8'4" x 10'0"	90 sq. ft	No
9	Dining Room	12'3" x 14'11"	179 sq. ft	Yes
10	Powder Room	3'6" x 7'2"	25 sq. ft	Yes
11	Garage	18'3" x 20'9"	379 sq. ft	No
12	Nook	6'6" x 5'8"	37 sq. ft	Yes
13	Mudroom	6'6" x 7'6"	48 sq. ft	Yes
14	Breakfast	13'10" x 10'1"	136 sq. ft	Yes
15	Living Room	18'3" x 12'0"	233 sq. ft	Yes
16	Patio	48'7" x 23'2"	1031 sq. ft	No
17	Foyer	7'6" x 8'9"	66 sq. ft	Yes

Home data report

17 Mt Crescent,Angus,ON,CA

#		Dimensions	sqft	Counted as living area
18	Stairwell	3'2" x 7'1"	21 sq. ft	No
19	Hall	5'7" x 7'0"	80 sq. ft	No

17 Mt Crescent, Angus, ON, CA



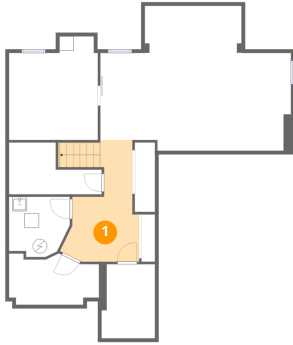
Room dimensions

Floor 3

Total: 1217 sqft Excluded: 0 sqft

#		Dimensions	sqft	Counted as living area
20	Hall	10'0" x 3'2"	32 sq. ft	Yes
21	Hall	14'1" x 11'7"	162 sq. ft	Yes
22	Primary Bath	11'11" x 9'11"	118 sq. ft	Yes
23	Laundry	5'8" x 7'6"	43 sq. ft	Yes
24	W.I.C.	10'0" x 4'5"	44 sq. ft	Yes
25	Bath	7'6" x 7'7"	49 sq. ft	Yes
26	Bedroom	15'6" x 9'10"	153 sq. ft	Yes
27	Bedroom	13'10" x 10'6"	144 sq. ft	Yes
28	Primary Bedroom	16'3" x 12'0"	195 sq. ft	Yes
29	Bedroom	12'3" x 14'11"	159 sq. ft	Yes

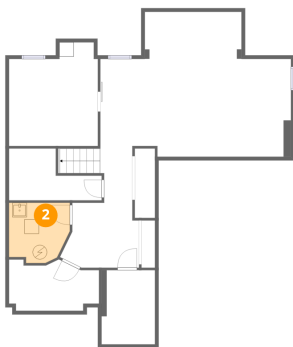
1 Floor 1 - Hall



Dimensions: 10'10" x 16'9"
Area: 136 sq. ft
Counted as living area: Yes

Heated: Yes
Finished: Yes
Enclosed: Yes
Contiguous: Yes
Permitted: Yes
Wet space: No
Addition: No
Conversion: No

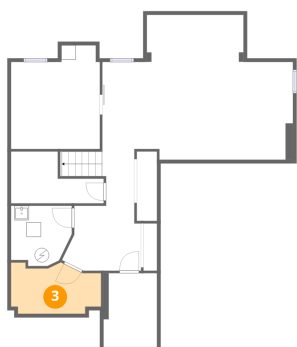
2 Floor 1 - Utility



Dimensions: 8'5" x 8'4"
Area: 63 sq. ft
Counted as living area: No

Heated: Yes
Finished: No
Enclosed: Yes
Contiguous: Yes
Permitted: Yes
Wet space: No
Addition: No
Conversion: No

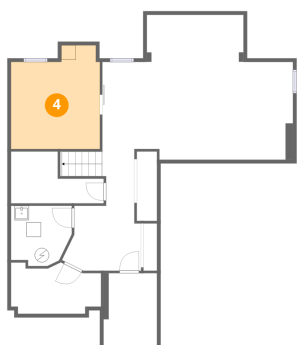
3 Floor 1 - Future Bathroom



Dimensions: 12'5" x 7'1"
Area: 76 sq. ft
Counted as living area: No

Heated: No
Finished: No
Enclosed: No
Contiguous: Yes
Permitted: Yes
Wet space: No
Addition: No
Conversion: No

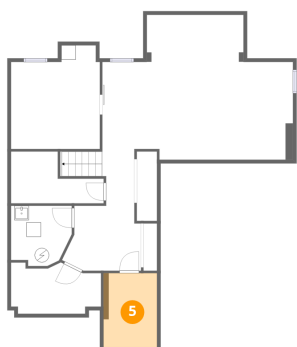
4 Floor 1 - Office



Dimensions: 12'3" x 14'4"
Area: 158 sq. ft
Counted as living area: Yes

Heated: Yes
Finished: Yes
Enclosed: Yes
Contiguous: Yes
Permitted: Yes
Wet space: No
Addition: No
Conversion: No

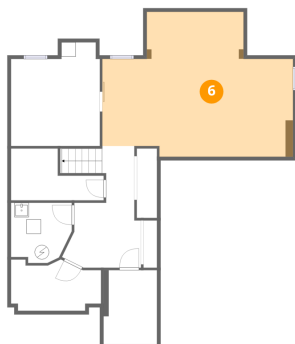
5 Floor 1 - Cold Storage



Dimensions: 7'4" x 10'3"
Area: 75 sq. ft
Counted as living area: No

Heated: No
Finished: No
Enclosed: No
Contiguous: No
Permitted: Yes
Wet space: No
Addition: No
Conversion: No

6 Floor 1 - Recreation Room



Dimensions: 26'4" x 20'0"
Area: 430 sq. ft
Counted as living area: Yes

Heated: Yes
Finished: Yes
Enclosed: Yes
Contiguous: Yes
Permitted: Yes
Wet space: No
Addition: No
Conversion: No

7 Floor 2 - Kitchen



Dimensions: 13'10" x 9'11"
Area: 136 sq. ft
Counted as living area: Yes

Heated: Yes
Finished: Yes
Enclosed: Yes
Contiguous: Yes
Permitted: Yes
Wet space: No
Addition: No
Conversion: No

8 Floor 2 - Porch



Dimensions: 8'4" x 10'0"
Area: 90 sq. ft
Counted as living area: No

Heated: No
Finished: No
Enclosed: No
Contiguous: Yes
Permitted: Yes
Wet space: No
Addition: No
Conversion: No

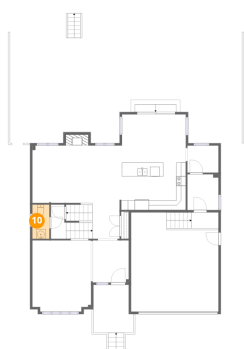
9 Floor 2 - Dining Room



Dimensions: 12'3" x 14'11"
Area: 179 sq. ft
Counted as living area: Yes

Heated: Yes
Finished: Yes
Enclosed: Yes
Contiguous: Yes
Permitted: Yes
Wet space: No
Addition: No
Conversion: No

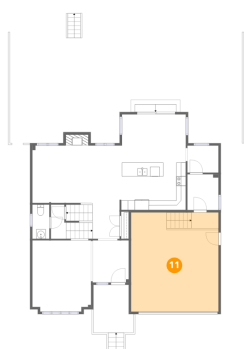
10 Floor 2 - Powder Room



Dimensions: 3'6" x 7'2"
Area: 25 sq. ft
Counted as living area: Yes

Heated: Yes
Finished: Yes
Enclosed: Yes
Contiguous: Yes
Permitted: Yes
Wet space: No
Addition: No
Conversion: No

11 Floor 2 - Garage



Dimensions: 18'3" x 20'9"
Area: 379 sq. ft
Counted as living area: No

Heated: No
Finished: No
Enclosed: Yes
Contiguous: Yes
Permitted: Yes
Wet space: No
Addition: No
Conversion: No

12 Floor 2 - Nook



Dimensions: 6'6" x 5'8"
Area: 37 sq. ft
Counted as living area: Yes

Heated: Yes
Finished: Yes
Enclosed: Yes
Contiguous: Yes
Permitted: Yes
Wet space: No
Addition: No
Conversion: No

13 Floor 2 - Mudroom



Dimensions: 6'6" x 7'6"
Area: 48 sq. ft
Counted as living area: Yes

Heated: Yes
Finished: Yes
Enclosed: Yes
Contiguous: Yes
Permitted: Yes
Wet space: No
Addition: No
Conversion: No

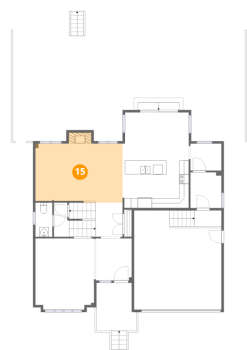
14 Floor 2 - Breakfast



Dimensions: 13'10" x 10'1"
Area: 136 sq. ft
Counted as living area: Yes

Heated: Yes
Finished: Yes
Enclosed: Yes
Contiguous: Yes
Permitted: Yes
Wet space: No
Addition: No
Conversion: No

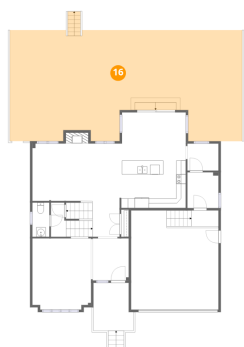
15 Floor 2 - Living Room



Dimensions: 18'3" x 12'0"
Area: 233 sq. ft
Counted as living area: Yes

Heated: Yes
Finished: Yes
Enclosed: Yes
Contiguous: Yes
Permitted: Yes
Wet space: No
Addition: No
Conversion: No

16 Floor 2 - Patio



Dimensions: 48'7" x 23'2"
Area: 1031 sq. ft
Counted as living area: No

Heated: No
Finished: No
Enclosed: No
Contiguous: Yes
Permitted: Yes
Wet space: No
Addition: No
Conversion: No

17 Floor 2 - Foyer



Dimensions: 7'6" x 8'9"
Area: 66 sq. ft
Counted as living area: Yes

Heated: Yes
Finished: Yes
Enclosed: Yes
Contiguous: Yes
Permitted: Yes
Wet space: No
Addition: No
Conversion: No

18 Floor 2 - Stairwell



Dimensions: 3'2" x 7'1"
Area: 21 sq. ft
Counted as living area: No

Heated: No
Finished: No
Enclosed: No
Contiguous: No
Permitted: No
Wet space: No
Addition: No
Conversion: No

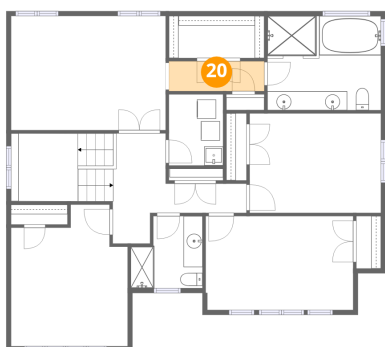
19 Floor 2 - Hall



Dimensions: 5'7" x 7'0"
Area: 80 sq. ft
Counted as living area: No

Heated: Yes
Finished: Yes
Enclosed: Yes
Contiguous: Yes
Permitted: Yes
Wet space: No
Addition: No
Conversion: No

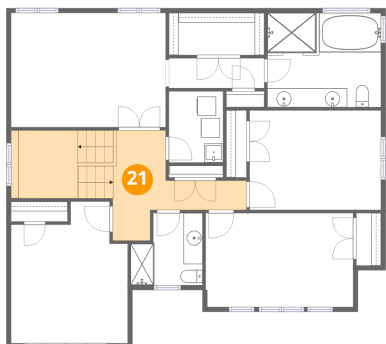
20 Floor 3 - Hall



Dimensions: 10'0" x 3'2"
Area: 32 sq. ft
Counted as living area: Yes

Heated: Yes
Finished: Yes
Enclosed: Yes
Contiguous: Yes
Permitted: Yes
Wet space: No
Addition: No
Conversion: No

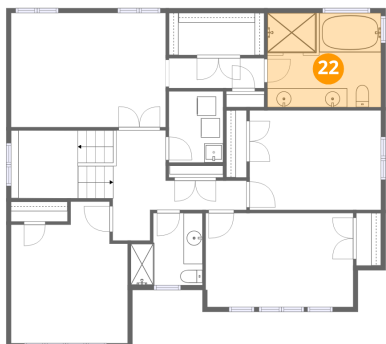
21 Floor 3 - Hall



Dimensions: 14'1" x 11'7"
Area: 162 sq. ft
Counted as living area: Yes

Heated: Yes
Finished: Yes
Enclosed: Yes
Contiguous: Yes
Permitted: Yes
Wet space: No
Addition: No
Conversion: No

22 Floor 3 - Primary Bath



Dimensions: 11'11" x 9'11"
Area: 118 sq. ft
Counted as living area: Yes

Heated: Yes
Finished: Yes
Enclosed: Yes
Contiguous: Yes
Permitted: Yes
Wet space: Yes
Addition: No
Conversion: No

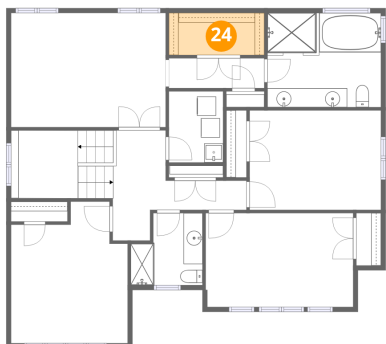
23 Floor 3 - Laundry



Dimensions: 5'8" x 7'6"
Area: 43 sq. ft
Counted as living area: Yes

Heated: Yes
Finished: Yes
Enclosed: Yes
Contiguous: Yes
Permitted: Yes
Wet space: No
Addition: No
Conversion: No

24 Floor 3 - W.I.C.



Dimensions: 10'0" x 4'5"
Area: 44 sq. ft
Counted as living area: Yes

Heated: Yes
Finished: Yes
Enclosed: Yes
Contiguous: Yes
Permitted: Yes
Wet space: No
Addition: No
Conversion: No

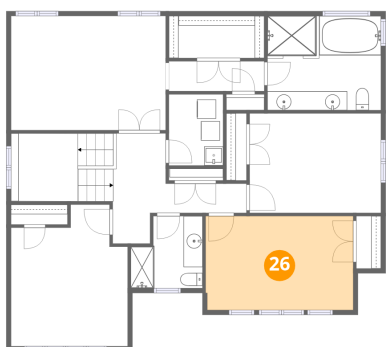
25 Floor 3 - Bath



Dimensions: 7'6" x 7'7"
Area: 49 sq. ft
Counted as living area: Yes

Heated: Yes
Finished: Yes
Enclosed: Yes
Contiguous: Yes
Permitted: Yes
Wet space: Yes
Addition: No
Conversion: No

26 Floor 3 - Bedroom



Dimensions: 15'6" x 9'10"
Area: 153 sq. ft
Counted as living area: Yes

Heated: Yes
Finished: Yes
Enclosed: Yes
Contiguous: Yes
Permitted: Yes
Wet space: No
Addition: No
Conversion: No

27 Floor 3 - Bedroom



Dimensions: 13'10" x 10'6"
Area: 144 sq. ft
Counted as living area: Yes

Heated: Yes
Finished: Yes
Enclosed: Yes
Contiguous: Yes
Permitted: Yes
Wet space: No
Addition: No
Conversion: No

28 Floor 3 - Primary Bedroom



Dimensions: 16'3" x 12'0"
Area: 195 sq. ft
Counted as living area: Yes

Heated: Yes
Finished: Yes
Enclosed: Yes
Contiguous: Yes
Permitted: Yes
Wet space: No
Addition: No
Conversion: No

29 Floor 3 - Bedroom



Dimensions: 12'3" x 14'11"
Area: 159 sq. ft
Counted as living area: Yes

Heated: Yes
Finished: Yes
Enclosed: Yes
Contiguous: Yes
Permitted: Yes
Wet space: No
Addition: No
Conversion: No