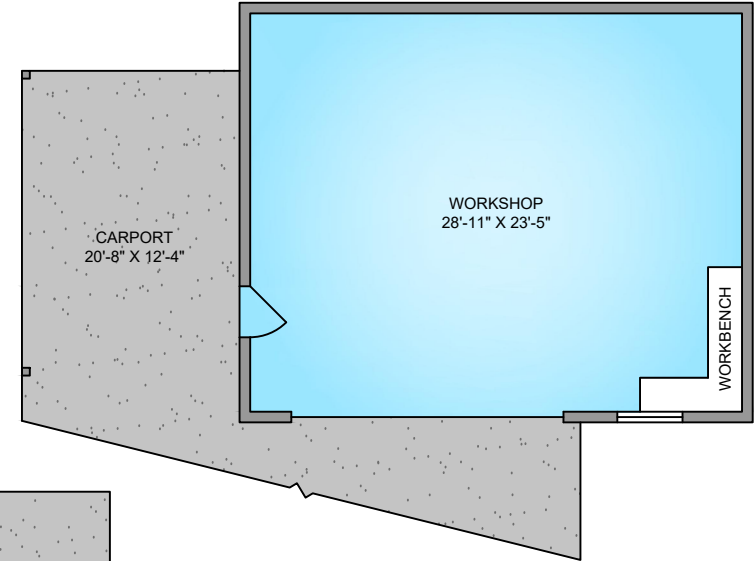


LOWER FLOOR
 1291 SQ. FT.
 8'-0" CEILING

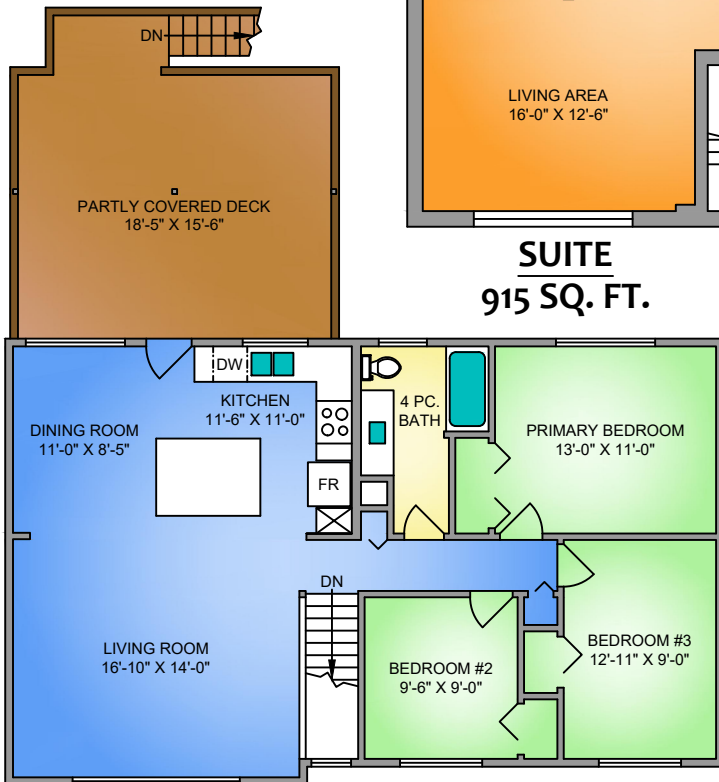
STORAGE
 179 SQ. FT.



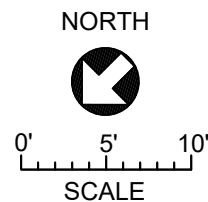
WORKSHOP
 744 SQ. FT.
 10'-0" CEILING



MAIN FLOOR
 1083 SQ. FT.
 8'-0" CEILING



SUITE
 915 SQ. FT.



2629 Willow Grouse Crescent
 APRIL 29, 2026

This floor plan has been laser measured and drafted by a professional Drafting Technician using AutoCAD software. ANSI Z765-2021 Method for Single-Family Residential Buildings used in calculating Area. Private resale or modification of this copyrighted document to a third party by any individual or entity, other than the original creator is strictly prohibited. Plans may not be 100% accurate. Buyer must verify any critical measurement.

FLOOR	AREA (SQ. FT.)		
	FINISHED	UNFINISHED	DECK / PATIO
MAIN	1083	-	285
LOWER	1291	-	265
TOTAL	2374	-	550
WORKSHOP	-	744	-
STORAGE	-	179	-