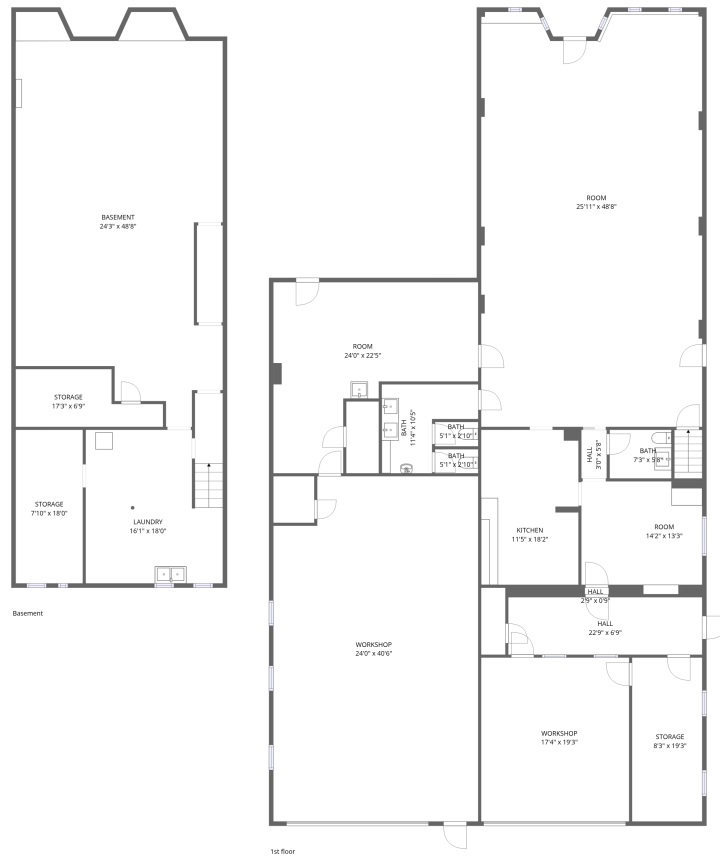


Home data report

10118 Eagle St., Dearborn, MI, US




Total Area: 2884 sq. ft

Basement: 357 sq. ft, 1st Floor: 2527 sq. ft

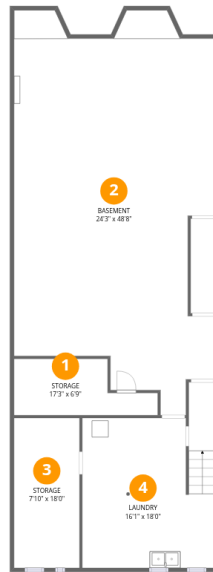
Excluded: Storage 409 sq. ft, Basement 983 sq. ft, Workshop 1282 sq. ft, Walls: 244 sq. ft

Property summary

 **2** Floors

 **2** Half baths

10118 Eagle St., Dearborn, MI, US



Room dimensions

Floor 1 Below grade

Total:357sqft

Excluded: 1228sqft

#		Dimensions	sqft	Counted as living area
1	Storage	17'3" x 6'9"	117 sq. ft	No
2	Basement	24'3" x 48'8"	1181 sq. ft	No
3	Storage	7'10" x 18'0"	142 sq. ft	No
4	Laundry	16'1" x 18'0"	289 sq. ft	Yes

Home data report

10118 Eagle St., Dearborn, MI, US



Room dimensions

Floor 2

Total: 2527 sqft

Excluded: 1446 sqft

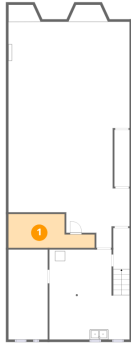
#		Dimensions	sqft	Counted as living area
5	Hall	2'9" x 0'9"	2 sq. ft	Yes
6	Bath	5'1" x 2'10"	15 sq. ft	Yes
7	Bath	5'1" x 2'10"	14 sq. ft	Yes
8	Bath	7'3" x 5'8"	41 sq. ft	Yes
9	Storage	8'3" x 19'3"	158 sq. ft	No
10	Kitchen	11'5" x 18'2"	207 sq. ft	Yes
11	Workshop	17'4" x 19'3"	333 sq. ft	No
12	Room	14'2" x 13'3"	188 sq. ft	Yes
13	Room	24'0" x 22'5"	538 sq. ft	Yes
14	Hall	3'0" x 5'8"	17 sq. ft	Yes
15	Hall	22'9" x 6'9"	153 sq. ft	Yes

Home data report

10118 Eagle St.,Dearborn,MI,US

#		Dimensions	sqft	Counted as living area
16	Room	25'11" x 48'8"	1261 sq. ft	Yes
17	Workshop	24'0" x 40'6"	972 sq. ft	No
18	Bath	11'4" x 10'5"	118 sq. ft	Yes

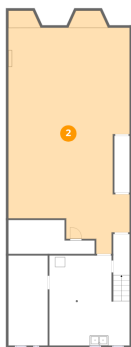
1 Floor 1 - Storage



Dimensions: 17'3" x 6'9"
Area: 117 sq. ft
Counted as living area: No

Heated: No
Finished: No
Enclosed: No
Contiguous: Yes
Permitted: Yes
Wet space: No
Addition: No
Conversion: No

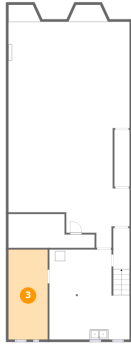
2 Floor 1 - Basement



Dimensions: 24'3" x 48'8"
Area: 1181 sq. ft
Counted as living area: No

Heated: Yes
Finished: No
Enclosed: Yes
Contiguous: Yes
Permitted: Yes
Wet space: No
Addition: No
Conversion: No

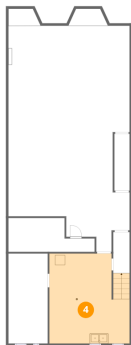
3 Floor 1 - Storage



Dimensions: 7'10" x 18'0"
Area: 142 sq. ft
Counted as living area: No

Heated: No
Finished: No
Enclosed: No
Contiguous: Yes
Permitted: Yes
Wet space: No
Addition: No
Conversion: No

4 Floor 1 - Laundry



Dimensions: 16'1" x 18'0"
Area: 289 sq. ft
Counted as living area: No

Heated: Yes
Finished: Yes
Enclosed: Yes
Contiguous: No
Permitted: Yes
Wet space: No
Addition: No
Conversion: No

5 Floor 2 - Hall



Dimensions: 2'9" x 0'9"
Area: 2 sq. ft
Counted as living area: Yes

Heated: Yes
Finished: Yes
Enclosed: Yes
Contiguous: Yes
Permitted: Yes
Wet space: No
Addition: No
Conversion: No

6 Floor 2 - Bath



Dimensions: 5'1" x 2'10"
Area: 15 sq. ft
Counted as living area: Yes

Heated: Yes
Finished: Yes
Enclosed: Yes
Contiguous: Yes
Permitted: Yes
Wet space: No
Addition: No
Conversion: No

7 Floor 2 - Bath



Dimensions: 5'1" x 2'10"
Area: 14 sq. ft
Counted as living area: Yes

Heated: Yes
Finished: Yes
Enclosed: Yes
Contiguous: Yes
Permitted: Yes
Wet space: No
Addition: No
Conversion: No

8 Floor 2 - Bath



Dimensions: 7'3" x 5'8"
Area: 41 sq. ft
Counted as living area: Yes

Heated: Yes
Finished: Yes
Enclosed: Yes
Contiguous: Yes
Permitted: Yes
Wet space: Yes
Addition: No
Conversion: No

9 Floor 2 - Storage



Dimensions: 8'3" x 19'3"
Area: 158 sq. ft
Counted as living area: No

Heated: No
Finished: No
Enclosed: No
Contiguous: Yes
Permitted: Yes
Wet space: No
Addition: No
Conversion: No

10 Floor 2 - Kitchen



Dimensions: 11'5" x 18'2"
Area: 207 sq. ft
Counted as living area: Yes

Heated: Yes
Finished: Yes
Enclosed: Yes
Contiguous: Yes
Permitted: Yes
Wet space: No
Addition: No
Conversion: No

11 Floor 2 - Workshop



Dimensions: 17'4" x 19'3"
Area: 333 sq. ft
Counted as living area: No

Heated: No
Finished: No
Enclosed: Yes
Contiguous: Yes
Permitted: Yes
Wet space: No
Addition: No
Conversion: No

12 Floor 2 - Room



Dimensions: 14'2" x 13'3"
Area: 188 sq. ft
Counted as living area: Yes

Heated: Yes
Finished: Yes
Enclosed: Yes
Contiguous: Yes
Permitted: Yes
Wet space: No
Addition: No
Conversion: No

13 Floor 2 - Room



Dimensions: 24'0" x 22'5"
Area: 538 sq. ft
Counted as living area: Yes

Heated: Yes
Finished: Yes
Enclosed: Yes
Contiguous: Yes
Permitted: Yes
Wet space: No
Addition: No
Conversion: No

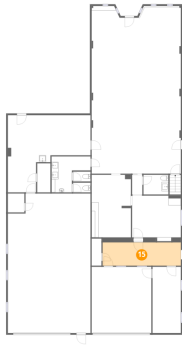
14 Floor 2 - Hall



Dimensions: 3'0" x 5'8"
Area: 17 sq. ft
Counted as living area: Yes

Heated: Yes
Finished: Yes
Enclosed: Yes
Contiguous: Yes
Permitted: Yes
Wet space: No
Addition: No
Conversion: No

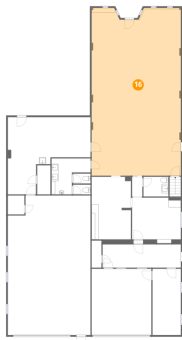
15 Floor 2 - Hall



Dimensions: 22'9" x 6'9"
Area: 153 sq. ft
Counted as living area: Yes

Heated: Yes
Finished: Yes
Enclosed: Yes
Contiguous: Yes
Permitted: Yes
Wet space: No
Addition: No
Conversion: No

16 Floor 2 - Room



Dimensions: 25'11" x 48'8"
Area: 1261 sq. ft
Counted as living area: Yes

Heated: Yes
Finished: Yes
Enclosed: Yes
Contiguous: Yes
Permitted: Yes
Wet space: No
Addition: No
Conversion: No

17 Floor 2 - Workshop



Dimensions: 24'0" x 40'6"
Area: 972 sq. ft
Counted as living area: No

Heated: No
Finished: No
Enclosed: Yes
Contiguous: Yes
Permitted: Yes
Wet space: No
Addition: No
Conversion: No

18 Floor 2 - Bath



Dimensions: 11'4" x 10'5"
Area: 118 sq. ft
Counted as living area: Yes

Heated: Yes
Finished: Yes
Enclosed: Yes
Contiguous: Yes
Permitted: Yes
Wet space: Yes
Addition: No
Conversion: No