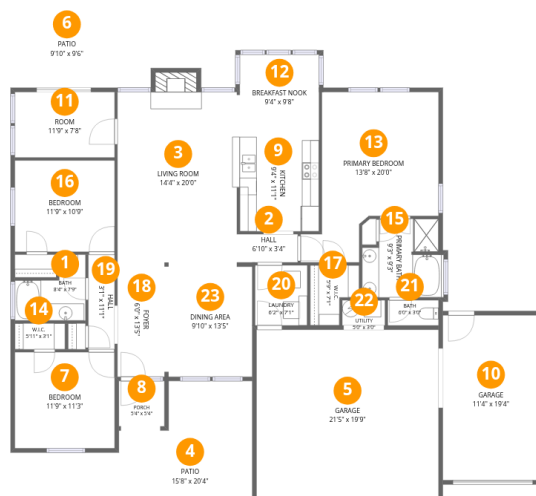


Home data report

5249 Carson Place, West Lawrence, Lawrence, Douglas County, Kansas, United States, 66049



Room dimensions

Floor 1

Total:1662sqft

Excluded: 1079sqft

#		Dimensions	sqft	Counted as living area
1	Bath	8'4" x 7'9"	48 sq. ft	Yes
2	Hall	6'10" x 3'4"	23 sq. ft	Yes
3	Living Room	14'4" x 20'0"	297 sq. ft	Yes
4	Patio	15'8" x 20'4"	288 sq. ft	No
5	Garage	21'5" x 19'9"	422 sq. ft	No
6	Patio	9'10" x 9'6"	93 sq. ft	No
7	Bedroom	11'9" x 11'3"	132 sq. ft	Yes
8	Porch	5'4" x 5'4"	28 sq. ft	No
9	Kitchen	9'4" x 11'1"	103 sq. ft	Yes
10	Garage	11'4" x 19'4"	219 sq. ft	No
11	Room	11'9" x 7'8"	90 sq. ft	Yes

Home data report

5249 Carson Place, West Lawrence, Lawrence, Douglas County, Kansas, United States, 66049

#		Dimensions	sqft	Counted as living area
12	Breakfast Nook	9'4" x 9'8"	90 sq. ft	Yes
13	Primary Bedroom	13'8" x 20'0"	232 sq. ft	Yes
14	W.I.C.	5'11" x 3'1"	18 sq. ft	Yes
15	Primary Bath	9'3" x 9'3"	78 sq. ft	Yes
16	Bedroom	11'9" x 10'9"	126 sq. ft	Yes
17	W.I.C.	5'9" x 7'1"	33 sq. ft	Yes
18	Foyer	6'0" x 13'5"	81 sq. ft	Yes
19	Hall	3'1" x 11'1"	34 sq. ft	Yes
20	Laundry	6'2" x 7'1"	43 sq. ft	Yes
21	Bath	6'0" x 3'0"	18 sq. ft	Yes
22	Utility	5'0" x 3'0"	15 sq. ft	No
23	Dining Area	9'10" x 13'5"	131 sq. ft	Yes

5249 Carson Place, West Lawrence, Lawrence, Douglas County, Kansas, United States, 66049

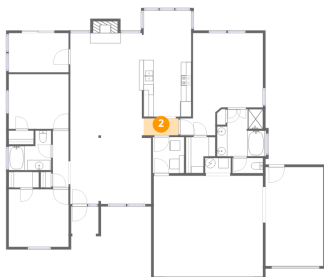
1 Floor 1 - Bath



Dimensions: 8'4" x 7'9"
Area: 48 sq. ft
Counted as living area: Yes

Heated: Yes
Finished: Yes
Enclosed: Yes
Contiguous: Yes
Permitted: Yes
Wet space: Yes
Addition: No
Conversion: No

2 Floor 1 - Hall

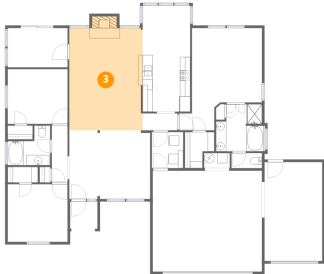


Dimensions: 6'10" x 3'4"
Area: 23 sq. ft
Counted as living area: Yes

Heated: Yes
Finished: Yes
Enclosed: Yes
Contiguous: Yes
Permitted: Yes
Wet space: No
Addition: No
Conversion: No

5249 Carson Place, West Lawrence, Lawrence, Douglas County, Kansas, United States, 66049

3 Floor 1 - Living Room



Dimensions: 14'4" x 20'0"
Area: 297 sq. ft
Counted as living area: Yes

Heated: Yes
Finished: Yes
Enclosed: Yes
Contiguous: Yes
Permitted: Yes
Wet space: No
Addition: No
Conversion: No

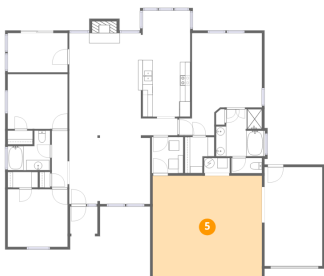
4 Floor 1 - Patio



Dimensions: 15'8" x 20'4"
Area: 288 sq. ft
Counted as living area: No

Heated: No
Finished: No
Enclosed: No
Contiguous: Yes
Permitted: Yes
Wet space: No
Addition: No
Conversion: No

5 Floor 1 - Garage



Dimensions: 21'5" x 19'9"
Area: 422 sq. ft
Counted as living area: No

Heated: No
Finished: No
Enclosed: Yes
Contiguous: Yes
Permitted: Yes
Wet space: No
Addition: No
Conversion: No

5249 Carson Place, West Lawrence, Lawrence, Douglas County, Kansas, United States, 66049

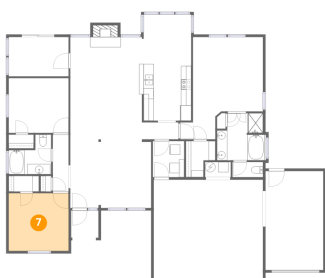
6 Floor 1 - Patio



Dimensions: 9'10" x 9'6"
Area: 93 sq. ft
Counted as living area: No

Heated: No
Finished: No
Enclosed: No
Contiguous: Yes
Permitted: Yes
Wet space: No
Addition: No
Conversion: No

7 Floor 1 - Bedroom



Dimensions: 11'9" x 11'3"
Area: 132 sq. ft
Counted as living area: Yes

Heated: Yes
Finished: Yes
Enclosed: Yes
Contiguous: Yes
Permitted: Yes
Wet space: No
Addition: No
Conversion: No

8 Floor 1 - Porch

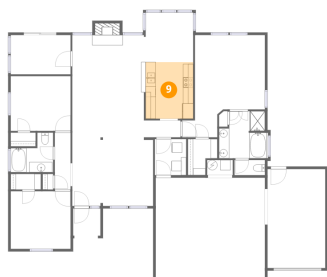


Dimensions: 5'4" x 5'4"
Area: 28 sq. ft
Counted as living area: No

Heated: No
Finished: No
Enclosed: No
Contiguous: Yes
Permitted: Yes
Wet space: No
Addition: No
Conversion: No

5249 Carson Place, West Lawrence, Lawrence, Douglas County, Kansas, United States, 66049

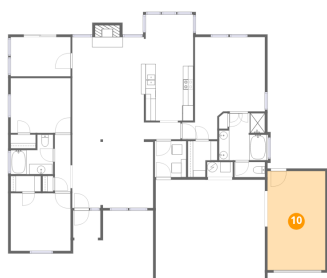
9 Floor 1 - Kitchen



Dimensions: 9'4" x 11'1"
Area: 103 sq. ft
Counted as living area: Yes

Heated: Yes
Finished: Yes
Enclosed: Yes
Contiguous: Yes
Permitted: Yes
Wet space: No
Addition: No
Conversion: No

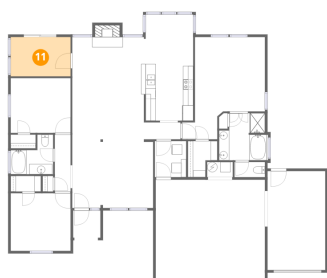
10 Floor 1 - Garage



Dimensions: 11'4" x 19'4"
Area: 219 sq. ft
Counted as living area: No

Heated: No
Finished: No
Enclosed: Yes
Contiguous: Yes
Permitted: Yes
Wet space: No
Addition: No
Conversion: No

11 Floor 1 - Room

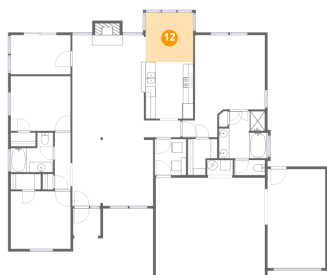


Dimensions: 11'9" x 7'8"
Area: 90 sq. ft
Counted as living area: Yes

Heated: Yes
Finished: Yes
Enclosed: Yes
Contiguous: Yes
Permitted: Yes
Wet space: No
Addition: No
Conversion: No

5249 Carson Place, West Lawrence, Lawrence, Douglas County, Kansas, United States, 66049

12 Floor 1 - Breakfast Nook



Dimensions: 9'4" x 9'8"
Area: 90 sq. ft
Counted as living area: Yes

Heated: Yes
Finished: Yes
Enclosed: Yes
Contiguous: Yes
Permitted: Yes
Wet space: No
Addition: No
Conversion: No

13 Floor 1 - Primary Bedroom



Dimensions: 13'8" x 20'0"
Area: 232 sq. ft
Counted as living area: Yes

Heated: Yes
Finished: Yes
Enclosed: Yes
Contiguous: Yes
Permitted: Yes
Wet space: No
Addition: No
Conversion: No

14 Floor 1 - W.I.C.



Dimensions: 5'11" x 3'1"
Area: 18 sq. ft
Counted as living area: Yes

Heated: Yes
Finished: Yes
Enclosed: Yes
Contiguous: Yes
Permitted: Yes
Wet space: No
Addition: No
Conversion: No

5249 Carson Place, West Lawrence, Lawrence, Douglas County, Kansas, United States, 66049

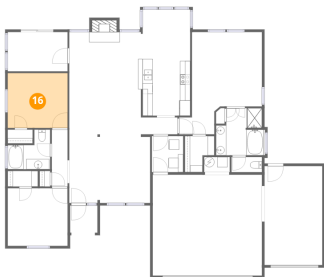
15 Floor 1 - Primary Bath



Dimensions: 9'3" x 9'3"
Area: 78 sq. ft
Counted as living area: Yes

Heated: Yes
Finished: Yes
Enclosed: Yes
Contiguous: Yes
Permitted: Yes
Wet space: Yes
Addition: No
Conversion: No

16 Floor 1 - Bedroom



Dimensions: 11'9" x 10'9"
Area: 126 sq. ft
Counted as living area: Yes

Heated: Yes
Finished: Yes
Enclosed: Yes
Contiguous: Yes
Permitted: Yes
Wet space: No
Addition: No
Conversion: No

17 Floor 1 - W.I.C.



Dimensions: 5'9" x 7'1"
Area: 33 sq. ft
Counted as living area: Yes

Heated: Yes
Finished: Yes
Enclosed: Yes
Contiguous: Yes
Permitted: Yes
Wet space: No
Addition: No
Conversion: No

5249 Carson Place, West Lawrence, Lawrence, Douglas County, Kansas, United States, 66049

18 Floor 1 - Foyer



Dimensions: 6'0" x 13'5"
Area: 81 sq. ft
Counted as living area: Yes

Heated: Yes
Finished: Yes
Enclosed: Yes
Contiguous: Yes
Permitted: Yes
Wet space: No
Addition: No
Conversion: No

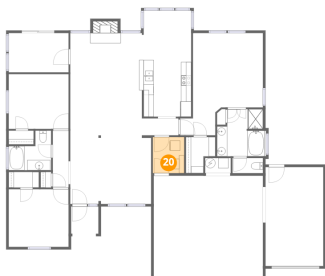
19 Floor 1 - Hall



Dimensions: 3'1" x 11'1"
Area: 34 sq. ft
Counted as living area: Yes

Heated: Yes
Finished: Yes
Enclosed: Yes
Contiguous: Yes
Permitted: Yes
Wet space: No
Addition: No
Conversion: No

20 Floor 1 - Laundry



Dimensions: 6'2" x 7'1"
Area: 43 sq. ft
Counted as living area: Yes

Heated: Yes
Finished: Yes
Enclosed: Yes
Contiguous: Yes
Permitted: Yes
Wet space: No
Addition: No
Conversion: No

5249 Carson Place, West Lawrence, Lawrence, Douglas County, Kansas, United States, 66049

21 Floor 1 - Bath



Dimensions: 6'0" x 3'0"
Area: 18 sq. ft
Counted as living area: Yes

Heated: Yes
Finished: Yes
Enclosed: Yes
Contiguous: Yes
Permitted: Yes
Wet space: Yes
Addition: No
Conversion: No

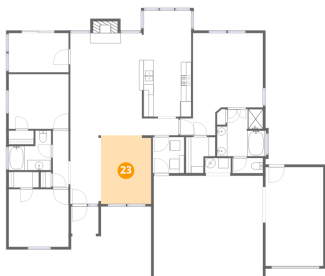
22 Floor 1 - Utility



Dimensions: 5'0" x 3'0"
Area: 15 sq. ft
Counted as living area: No

Heated: Yes
Finished: No
Enclosed: Yes
Contiguous: Yes
Permitted: Yes
Wet space: No
Addition: No
Conversion: No

23 Floor 1 - Dining Area



Dimensions: 9'10" x 13'5"
Area: 131 sq. ft
Counted as living area: Yes

Heated: Yes
Finished: Yes
Enclosed: Yes
Contiguous: Yes
Permitted: Yes
Wet space: No
Addition: No
Conversion: No