

# Home data report

## 196 County Road 3706, Addison, Alabama 35540, United States



**Total Area: 2831 sq. ft**

Basement: 645 sq. ft, 1st Floor: 1267 sq. ft, 2nd Floor: 919 sq. ft

Excluded: Garage 500 sq. ft, Deck 980 sq. ft, Covered deck 1374 sq. ft, Porch 93 sq. ft, Open to below 271 sq. ft, Walls: 255 sq. ft

### Property summary

**3** Floors

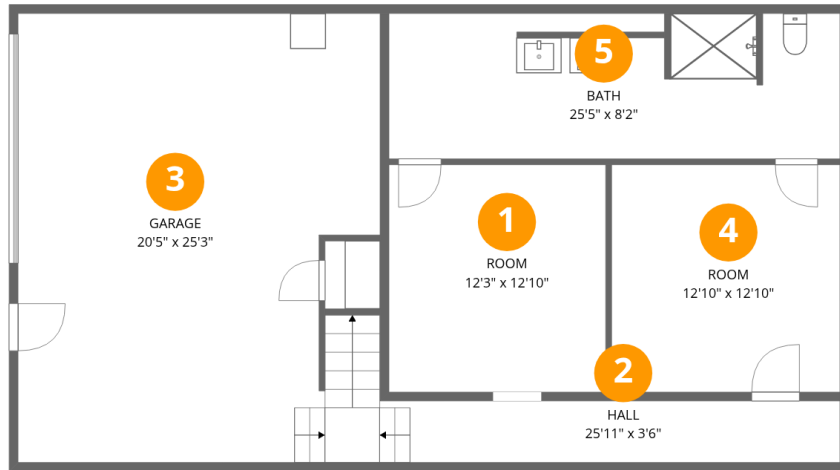
**3** Bedrooms

**4** Bathrooms

**1** Garages

# Home data report

## 196 County Road 3706, Addison, Alabama 35540, United States



### Room dimensions

Floor 1 Below grade

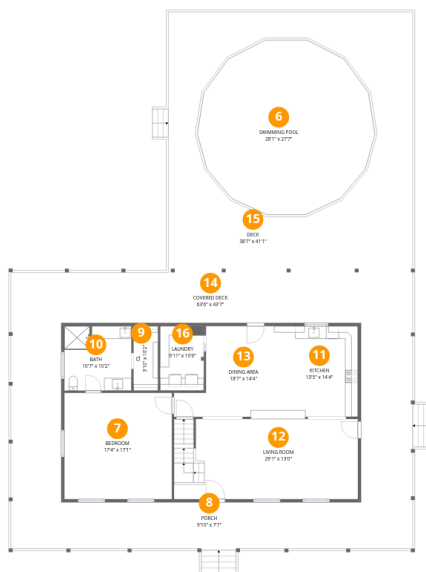
Total:645sqft

Excluded: 500sqft

#		Dimensions	sqft	Counted as living area
1	Room	12'3" x 12'10"	157 sq. ft	Yes
2	Hall	25'11" x 3'6"	90 sq. ft	Yes
3	Garage	20'5" x 25'3"	517 sq. ft	No
4	Room	12'10" x 12'10"	165 sq. ft	Yes
5	Bath	25'5" x 8'2"	209 sq. ft	Yes

# Home data report

196 County Road 3706, Addison, Alabama 35540, United States



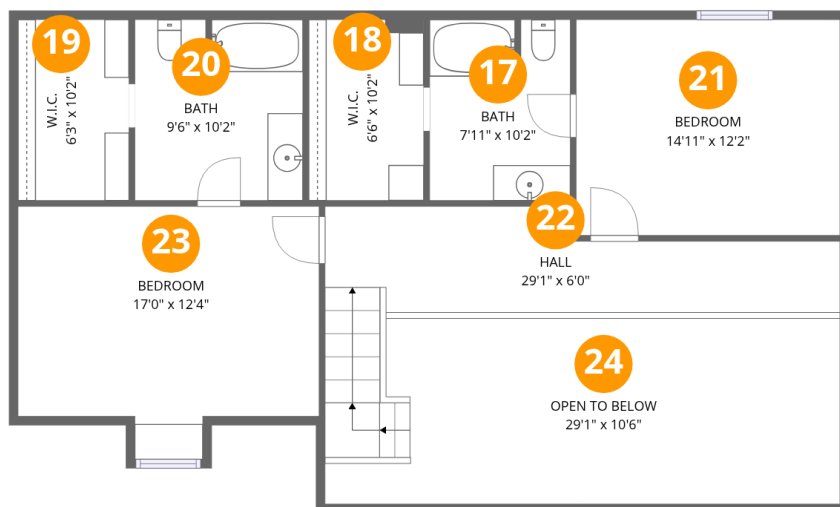
## Room dimensions

Floor 2

Total:1267sqft

Excluded: 2447sqft

#		Dimensions	sqft	Counted as living area
6	Swimming Pool	28'1" x 27'7"	775 sq. ft	No
7	Bedroom	17'4" x 17'1"	297 sq. ft	Yes
8	Porch	9'10" x 7'7"	74 sq. ft	No
9	Cl	3'10" x 10'2"	39 sq. ft	Yes
10	Bath	10'7" x 10'2"	108 sq. ft	Yes
11	Kitchen	10'5" x 14'4"	149 sq. ft	Yes
12	Living Room	29'1" x 13'0"	377 sq. ft	Yes
13	Dining Area	18'7" x 14'4"	266 sq. ft	Yes
14	Covered Deck	63'6" x 43'7"	2768 sq. ft	No
15	Deck	38'7" x 41'1"	1583 sq. ft	No
16	Laundry	6'11" x 10'6"	73 sq. ft	Yes



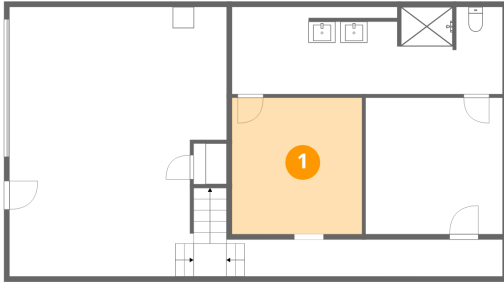
## Room dimensions

Floor 3

Total:919sqft Excluded: 271sqft

#		Dimensions	sqft	Counted as living area
17	Bath	7'11" x 10'2"	81 sq. ft	Yes
18	W.I.C.	6'6" x 10'2"	66 sq. ft	Yes
19	W.I.C.	6'3" x 10'2"	64 sq. ft	Yes
20	Bath	9'6" x 10'2"	97 sq. ft	Yes
21	Bedroom	14'11" x 12'2"	181 sq. ft	Yes
22	Hall	29'1" x 6'0"	174 sq. ft	Yes
23	Bedroom	17'0" x 12'4"	209 sq. ft	Yes
24	Open To Below	29'1" x 10'6"	304 sq. ft	No

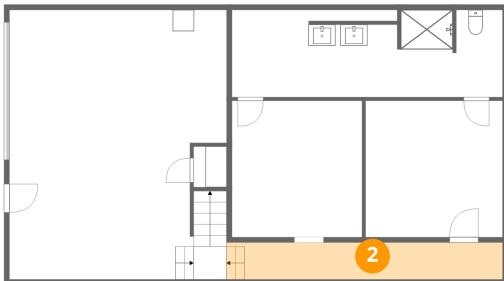
## 1 Floor 1 - Room



Dimensions: 12'3" x 12'10"  
Area: 157 sq. ft  
Counted as living area: Yes

Heated: Yes  
Finished: Yes  
Enclosed: Yes  
Contiguous: Yes  
Permitted: Yes  
Wet space: No  
Addition: No  
Conversion: No

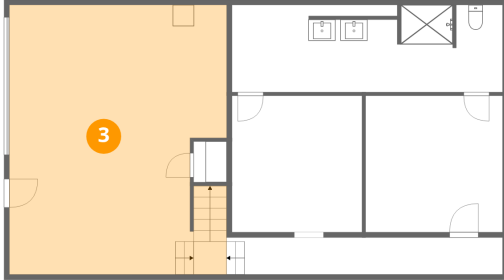
## 2 Floor 1 - Hall



Dimensions: 25'11" x 3'6"  
Area: 90 sq. ft  
Counted as living area: No

Heated: Yes  
Finished: Yes  
Enclosed: Yes  
Contiguous: No  
Permitted: Yes  
Wet space: No  
Addition: No  
Conversion: No

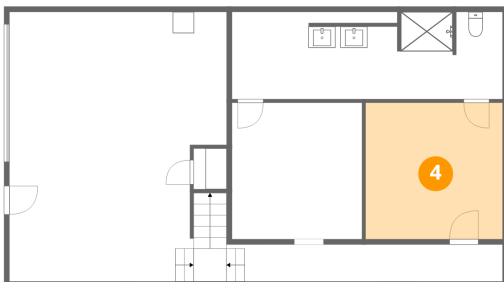
### 3 Floor 1 - Garage



Dimensions: 20'5" x 25'3"  
Area: 517 sq. ft  
Counted as living area: No

Heated: No  
Finished: No  
Enclosed: Yes  
Contiguous: Yes  
Permitted: Yes  
Wet space: No  
Addition: No  
Conversion: No

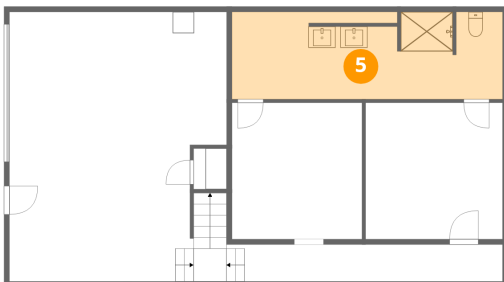
### 4 Floor 1 - Room



Dimensions: 12'10" x 12'10"  
Area: 165 sq. ft  
Counted as living area: Yes

Heated: Yes  
Finished: Yes  
Enclosed: Yes  
Contiguous: Yes  
Permitted: Yes  
Wet space: No  
Addition: No  
Conversion: No

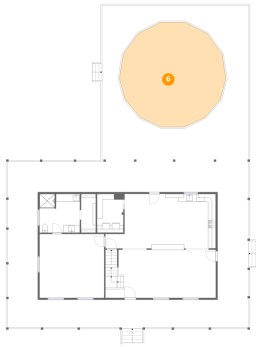
### 5 Floor 1 - Bath



Dimensions: 25'5" x 8'2"  
Area: 209 sq. ft  
Counted as living area: Yes

Heated: Yes  
Finished: Yes  
Enclosed: Yes  
Contiguous: Yes  
Permitted: Yes  
Wet space: Yes  
Addition: No  
Conversion: No

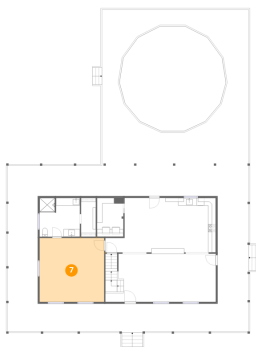
## 6 Floor 2 - Swimming Pool



Dimensions: 28'1" x 27'7"  
Area: 775 sq. ft  
Counted as living area: No

Heated: No  
Finished: No  
Enclosed: No  
Contiguous: Yes  
Permitted: No  
Wet space: No  
Addition: No  
Conversion: No

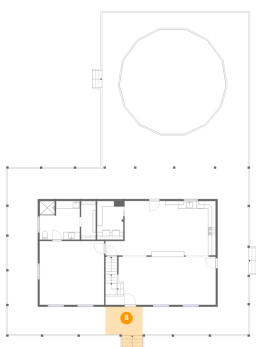
## 7 Floor 2 - Bedroom



Dimensions: 17'4" x 17'1"  
Area: 297 sq. ft  
Counted as living area: Yes

Heated: Yes  
Finished: Yes  
Enclosed: Yes  
Contiguous: Yes  
Permitted: Yes  
Wet space: No  
Addition: No  
Conversion: No

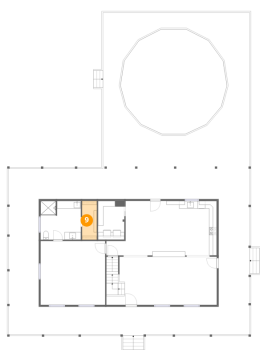
## 8 Floor 2 - Porch



Dimensions: 9'10" x 7'7"  
Area: 74 sq. ft  
Counted as living area: No

Heated: No  
Finished: No  
Enclosed: No  
Contiguous: Yes  
Permitted: Yes  
Wet space: No  
Addition: No  
Conversion: No

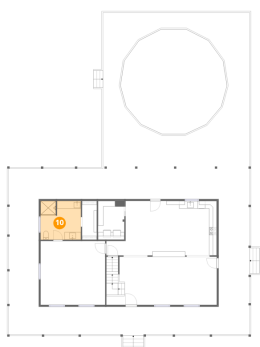
### 9 Floor 2 - Cl



Dimensions: 3'10" x 10'2"  
Area: 39 sq. ft  
Counted as living area: Yes

Heated: Yes  
Finished: Yes  
Enclosed: Yes  
Contiguous: Yes  
Permitted: Yes  
Wet space: No  
Addition: No  
Conversion: No

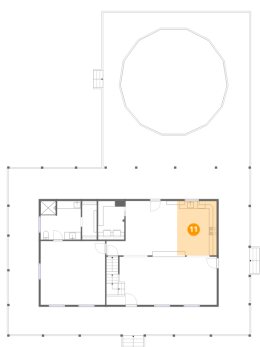
### 10 Floor 2 - Bath



Dimensions: 10'7" x 10'2"  
Area: 108 sq. ft  
Counted as living area: Yes

Heated: Yes  
Finished: Yes  
Enclosed: Yes  
Contiguous: Yes  
Permitted: Yes  
Wet space: Yes  
Addition: No  
Conversion: No

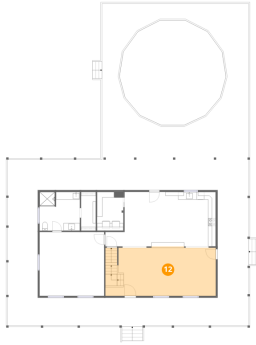
### 11 Floor 2 - Kitchen



Dimensions: 10'5" x 14'4"  
Area: 149 sq. ft  
Counted as living area: Yes

Heated: Yes  
Finished: Yes  
Enclosed: Yes  
Contiguous: Yes  
Permitted: Yes  
Wet space: No  
Addition: No  
Conversion: No

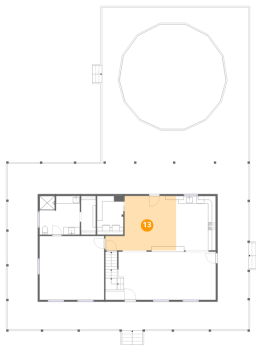
## 12 Floor 2 - Living Room



Dimensions: 29'1" x 13'0"  
Area: 377 sq. ft  
Counted as living area: Yes

Heated: Yes  
Finished: Yes  
Enclosed: Yes  
Contiguous: Yes  
Permitted: Yes  
Wet space: No  
Addition: No  
Conversion: No

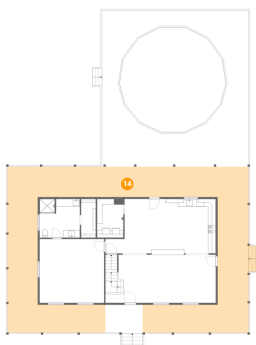
## 13 Floor 2 - Dining Area



Dimensions: 18'7" x 14'4"  
Area: 266 sq. ft  
Counted as living area: Yes

Heated: Yes  
Finished: Yes  
Enclosed: Yes  
Contiguous: Yes  
Permitted: Yes  
Wet space: No  
Addition: No  
Conversion: No

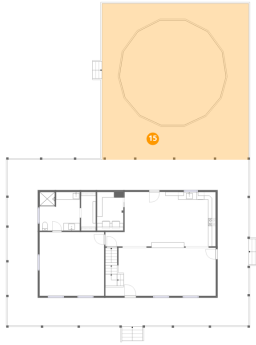
## 14 Floor 2 - Covered Deck



Dimensions: 63'6" x 43'7"  
Area: 2768 sq. ft  
Counted as living area: No

Heated: No  
Finished: No  
Enclosed: No  
Contiguous: Yes  
Permitted: Yes  
Wet space: No  
Addition: No  
Conversion: No

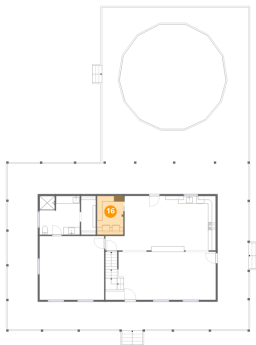
**15** Floor 2 - Deck



Dimensions: 38'7" x 41'1"  
Area: 1583 sq. ft  
Counted as living area: No

Heated: No  
Finished: No  
Enclosed: No  
Contiguous: Yes  
Permitted: Yes  
Wet space: No  
Addition: No  
Conversion: No

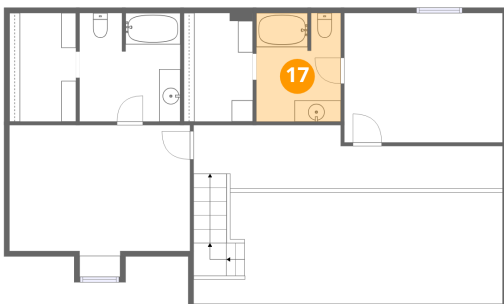
**16** Floor 2 - Laundry



Dimensions: 6'11" x 10'6"  
Area: 73 sq. ft  
Counted as living area: Yes

Heated: Yes  
Finished: Yes  
Enclosed: Yes  
Contiguous: Yes  
Permitted: Yes  
Wet space: No  
Addition: No  
Conversion: No

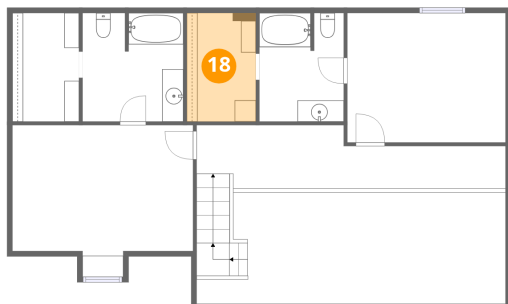
**17** Floor 3 - Bath



Dimensions: 7'11" x 10'2"  
Area: 81 sq. ft  
Counted as living area: Yes

Heated: Yes  
Finished: Yes  
Enclosed: Yes  
Contiguous: Yes  
Permitted: Yes  
Wet space: Yes  
Addition: No  
Conversion: No

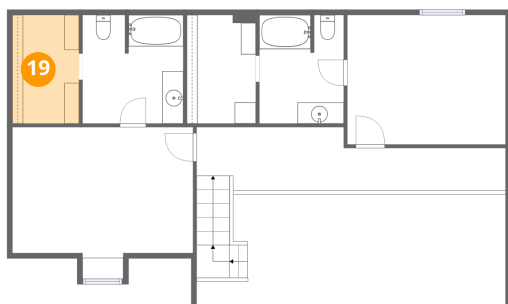
**18** Floor 3 - W.I.C.



Dimensions: 6'6" x 10'2"  
Area: 66 sq. ft  
Counted as living area: Yes

Heated: Yes  
Finished: Yes  
Enclosed: Yes  
Contiguous: Yes  
Permitted: Yes  
Wet space: No  
Addition: No  
Conversion: No

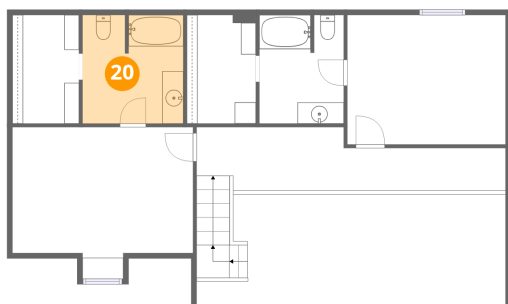
**19** Floor 3 - W.I.C.



Dimensions: 6'3" x 10'2"  
Area: 64 sq. ft  
Counted as living area: Yes

Heated: Yes  
Finished: Yes  
Enclosed: Yes  
Contiguous: Yes  
Permitted: Yes  
Wet space: No  
Addition: No  
Conversion: No

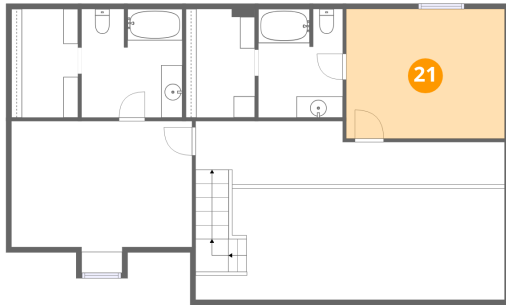
**20** Floor 3 - Bath



Dimensions: 9'6" x 10'2"  
Area: 97 sq. ft  
Counted as living area: Yes

Heated: Yes  
Finished: Yes  
Enclosed: Yes  
Contiguous: Yes  
Permitted: Yes  
Wet space: Yes  
Addition: No  
Conversion: No

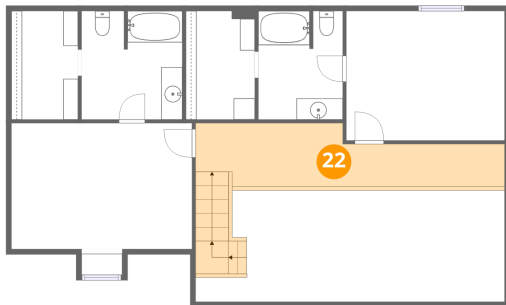
**21** Floor 3 - Bedroom



Dimensions: 14'11" x 12'2"  
Area: 181 sq. ft  
Counted as living area: Yes

Heated: Yes  
Finished: Yes  
Enclosed: Yes  
Contiguous: Yes  
Permitted: Yes  
Wet space: No  
Addition: No  
Conversion: No

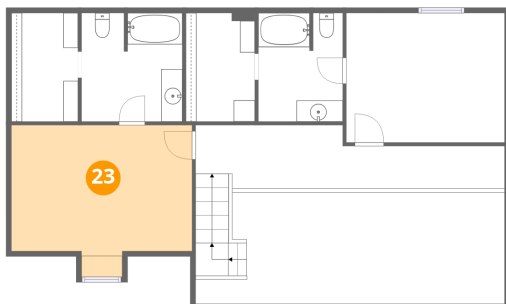
**22** Floor 3 - Hall



Dimensions: 29'1" x 6'0"  
Area: 174 sq. ft  
Counted as living area: Yes

Heated: Yes  
Finished: Yes  
Enclosed: Yes  
Contiguous: Yes  
Permitted: Yes  
Wet space: No  
Addition: No  
Conversion: No

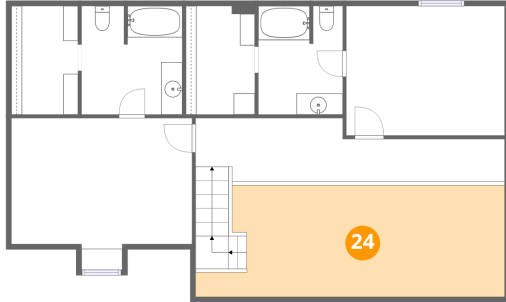
**23** Floor 3 - Bedroom



Dimensions: 17'0" x 12'4"  
Area: 209 sq. ft  
Counted as living area: Yes

Heated: Yes  
Finished: Yes  
Enclosed: Yes  
Contiguous: Yes  
Permitted: Yes  
Wet space: No  
Addition: No  
Conversion: No

**24** Floor 3 - Open To Below



Dimensions: 29'1" x 10'6"  
Area: 304 sq. ft  
Counted as living area: No

Heated: No  
Finished: No  
Enclosed: No  
Contiguous: Yes  
Permitted: No  
Wet space: No  
Addition: No  
Conversion: No