

Home data report

8100 Morley Road, Sodus Point, New York 14555, United States




Total Area: 2157 sq. ft


Basement: 677 sq. ft, 1st Floor: 1480 sq. ft

Excluded: Storage 432 sq. ft, Utility 364 sq. ft, Garage 422 sq. ft, Porch 336 sq. ft, Balcony 192 sq. ft, Walls: 220 sq. ft

Property summary

 **2** Floors

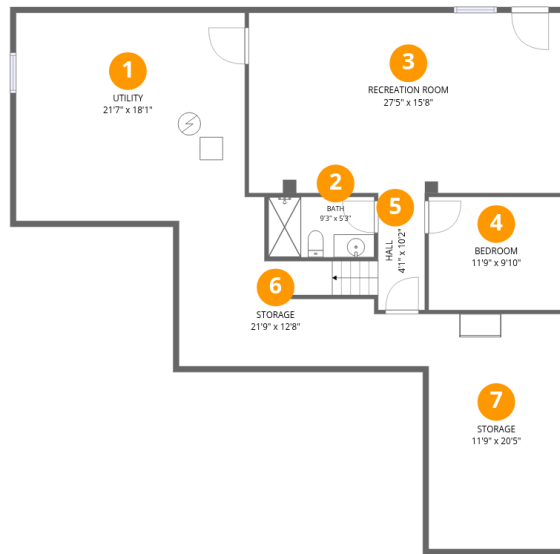
 **4** Bedrooms

 **3** Bathrooms

 **1** Garages

Home data report

8100 Morley Road, Sodus Point, New York 14555, United States



Room dimensions

Floor 1 Below grade

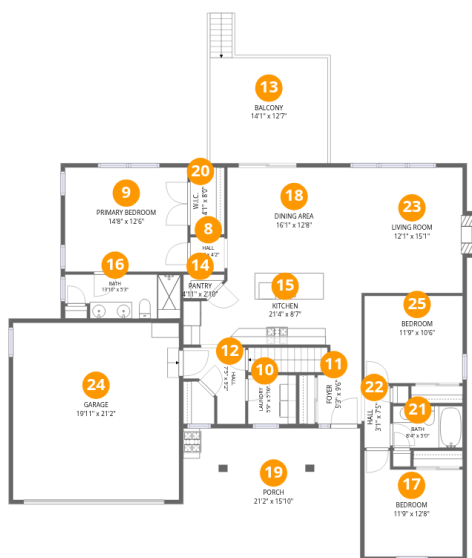
Total:677sqft

Excluded: 796sqft

#		Dimensions	sqft	Counted as living area
1	Utility	21'7" x 18'1"	364 sq. ft	No
2	Bath	9'3" x 5'3"	48 sq. ft	Yes
3	Recreation Room	27'5" x 15'8"	430 sq. ft	Yes
4	Bedroom	11'9" x 9'10"	116 sq. ft	Yes
5	Hall	4'1" x 10'2"	53 sq. ft	Yes
6	Storage	21'9" x 12'8"	189 sq. ft	No
7	Storage	11'9" x 20'5"	240 sq. ft	No

Home data report

8100 Morley Road, Sodus Point, New York 14555, United States



Room dimensions

Floor 2

Total:1480sqft Excluded: 950sqft

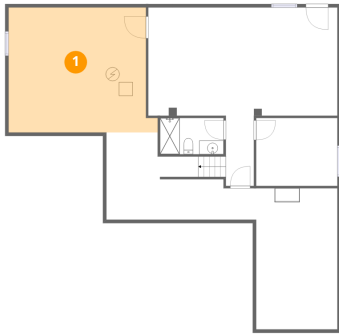
#		Dimensions	sqft	Counted as living area
8	Hall	4'1" x 4'2"	17 sq. ft	Yes
9	Primary Bedroom	14'8" x 12'6"	184 sq. ft	Yes
10	Laundry	5'9" x 5'10"	34 sq. ft	Yes
11	Foyer	5'3" x 9'6"	45 sq. ft	Yes
12	Hall	7'5" x 9'2"	48 sq. ft	Yes
13	Balcony	14'1" x 12'7"	192 sq. ft	No
14	Pantry	4'11" x 2'10"	12 sq. ft	Yes
15	Kitchen	21'4" x 8'7"	169 sq. ft	Yes
16	Bath	13'10" x 5'3"	68 sq. ft	Yes
17	Bedroom	11'9" x 12'8"	130 sq. ft	Yes
18	Dining Area	16'1" x 12'8"	204 sq. ft	Yes

Home data report

8100 Morley Road, Sodus Point, New York 14555, United States

#		Dimensions	sqft	Counted as living area
19	Porch	21'2" x 15'10"	336 sq. ft	No
20	W.I.C.	4'1" x 8'0"	33 sq. ft	Yes
21	Bath	8'4" x 5'0"	42 sq. ft	Yes
22	Hall	3'1" x 7'5"	23 sq. ft	Yes
23	Living Room	12'1" x 15'1"	190 sq. ft	Yes
24	Garage	19'11" x 21'2"	422 sq. ft	No
25	Bedroom	11'9" x 10'6"	123 sq. ft	Yes

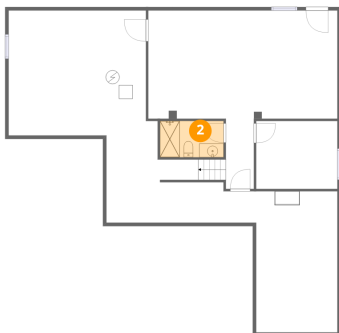
1 Floor 1 - Utility



Dimensions: 21'7" x 18'1"
Area: 364 sq. ft
Counted as living area: No

Heated: Yes
Finished: No
Enclosed: Yes
Contiguous: Yes
Permitted: Yes
Wet space: No
Addition: No
Conversion: No

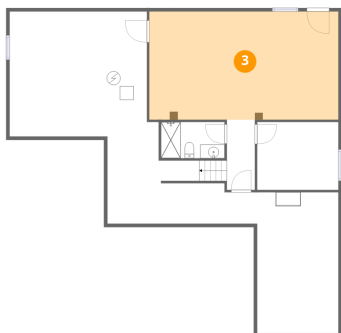
2 Floor 1 - Bath



Dimensions: 9'3" x 5'3"
Area: 48 sq. ft
Counted as living area: Yes

Heated: Yes
Finished: Yes
Enclosed: Yes
Contiguous: Yes
Permitted: Yes
Wet space: Yes
Addition: No
Conversion: No

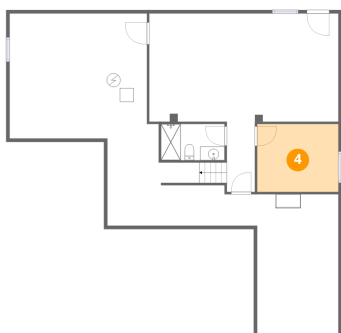
3 Floor 1 - Recreation Room



Dimensions: 27'5" x 15'8"
Area: 430 sq. ft
Counted as living area: Yes

Heated: Yes
Finished: Yes
Enclosed: Yes
Contiguous: Yes
Permitted: Yes
Wet space: No
Addition: No
Conversion: No

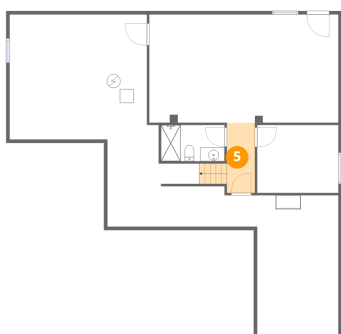
4 Floor 1 - Bedroom



Dimensions: 11'9" x 9'10"
Area: 116 sq. ft
Counted as living area: Yes

Heated: Yes
Finished: Yes
Enclosed: Yes
Contiguous: Yes
Permitted: Yes
Wet space: No
Addition: No
Conversion: No

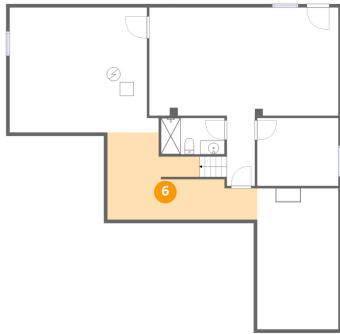
5 Floor 1 - Hall



Dimensions: 4'1" x 10'2"
Area: 53 sq. ft
Counted as living area: Yes

Heated: Yes
Finished: Yes
Enclosed: Yes
Contiguous: Yes
Permitted: Yes
Wet space: No
Addition: No
Conversion: No

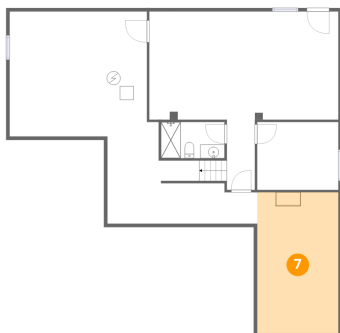
6 Floor 1 - Storage



Dimensions: 21'9" x 12'8"
Area: 189 sq. ft
Counted as living area: No

Heated: No
Finished: No
Enclosed: No
Contiguous: Yes
Permitted: Yes
Wet space: No
Addition: No
Conversion: No

7 Floor 1 - Storage



Dimensions: 11'9" x 20'5"
Area: 240 sq. ft
Counted as living area: No

Heated: No
Finished: No
Enclosed: No
Contiguous: Yes
Permitted: Yes
Wet space: No
Addition: No
Conversion: No

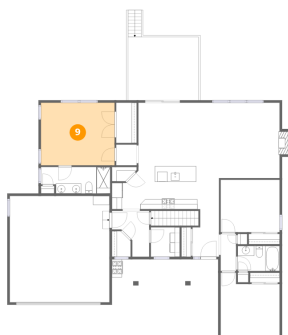
8 Floor 2 - Hall



Dimensions: 4'1" x 4'2"
Area: 17 sq. ft
Counted as living area: Yes

Heated: Yes
Finished: Yes
Enclosed: Yes
Contiguous: Yes
Permitted: Yes
Wet space: No
Addition: No
Conversion: No

9 Floor 2 - Primary Bedroom



Dimensions: 14'8" x 12'6"
Area: 184 sq. ft
Counted as living area: Yes

Heated: Yes
Finished: Yes
Enclosed: Yes
Contiguous: Yes
Permitted: Yes
Wet space: No
Addition: No
Conversion: No

10 Floor 2 - Laundry



Dimensions: 5'9" x 5'10"
Area: 34 sq. ft
Counted as living area: Yes

Heated: Yes
Finished: Yes
Enclosed: Yes
Contiguous: Yes
Permitted: Yes
Wet space: No
Addition: No
Conversion: No

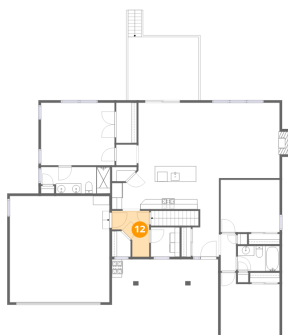
11 Floor 2 - Foyer



Dimensions: 5'3" x 9'6"
Area: 45 sq. ft
Counted as living area: Yes

Heated: Yes
Finished: Yes
Enclosed: Yes
Contiguous: Yes
Permitted: Yes
Wet space: No
Addition: No
Conversion: No

12 Floor 2 - Hall



Dimensions: 7'5" x 9'2"
Area: 48 sq. ft
Counted as living area: Yes

Heated: Yes
Finished: Yes
Enclosed: Yes
Contiguous: Yes
Permitted: Yes
Wet space: No
Addition: No
Conversion: No

13 Floor 2 - Balcony



Dimensions: 14'1" x 12'7"
Area: 192 sq. ft
Counted as living area: No

Heated: No
Finished: No
Enclosed: No
Contiguous: Yes
Permitted: Yes
Wet space: No
Addition: No
Conversion: No

14 Floor 2 - Pantry



Dimensions: 4'11" x 2'10"
Area: 12 sq. ft
Counted as living area: Yes

Heated: Yes
Finished: Yes
Enclosed: Yes
Contiguous: Yes
Permitted: Yes
Wet space: No
Addition: No
Conversion: No

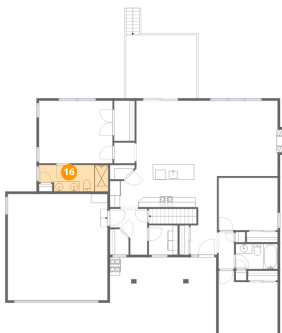
15 Floor 2 - Kitchen



Dimensions: 21'4" x 8'7"
Area: 169 sq. ft
Counted as living area: Yes

Heated: Yes
Finished: Yes
Enclosed: Yes
Contiguous: Yes
Permitted: Yes
Wet space: No
Addition: No
Conversion: No

16 Floor 2 - Bath



Dimensions: 13'10" x 5'3"
Area: 68 sq. ft
Counted as living area: Yes

Heated: Yes
Finished: Yes
Enclosed: Yes
Contiguous: Yes
Permitted: Yes
Wet space: Yes
Addition: No
Conversion: No

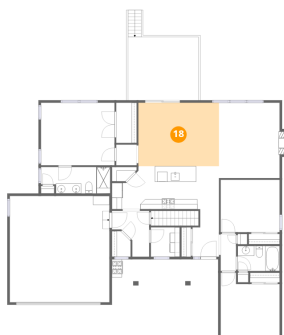
17 Floor 2 - Bedroom



Dimensions: 11'9" x 12'8"
Area: 130 sq. ft
Counted as living area: Yes

Heated: Yes
Finished: Yes
Enclosed: Yes
Contiguous: Yes
Permitted: Yes
Wet space: No
Addition: No
Conversion: No

18 Floor 2 - Dining Area



Dimensions: 16'1" x 12'8"
Area: 204 sq. ft
Counted as living area: Yes

Heated: Yes
Finished: Yes
Enclosed: Yes
Contiguous: Yes
Permitted: Yes
Wet space: No
Addition: No
Conversion: No

19 Floor 2 - Porch



Dimensions: 21'2" x 15'10"
Area: 336 sq. ft
Counted as living area: No

Heated: No
Finished: No
Enclosed: No
Contiguous: Yes
Permitted: Yes
Wet space: No
Addition: No
Conversion: No

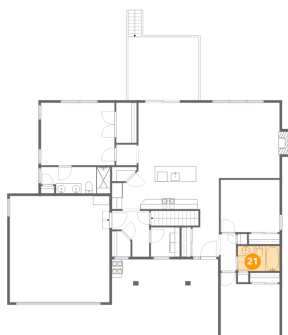
20 Floor 2 - W.I.C.



Dimensions: 4'1" x 8'0"
Area: 33 sq. ft
Counted as living area: Yes

Heated: Yes
Finished: Yes
Enclosed: Yes
Contiguous: Yes
Permitted: Yes
Wet space: No
Addition: No
Conversion: No

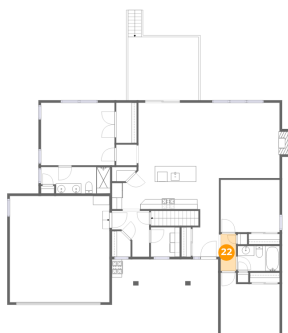
21 Floor 2 - Bath



Dimensions: 8'4" x 5'0"
Area: 42 sq. ft
Counted as living area: Yes

Heated: Yes
Finished: Yes
Enclosed: Yes
Contiguous: Yes
Permitted: Yes
Wet space: Yes
Addition: No
Conversion: No

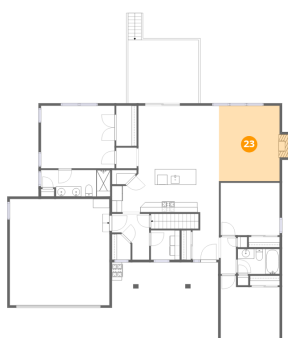
22 Floor 2 - Hall



Dimensions: 3'1" x 7'5"
Area: 23 sq. ft
Counted as living area: Yes

Heated: Yes
Finished: Yes
Enclosed: Yes
Contiguous: Yes
Permitted: Yes
Wet space: No
Addition: No
Conversion: No

23 Floor 2 - Living Room



Dimensions: 12'1" x 15'1"
Area: 190 sq. ft
Counted as living area: Yes

Heated: Yes
Finished: Yes
Enclosed: Yes
Contiguous: Yes
Permitted: Yes
Wet space: No
Addition: No
Conversion: No

24 Floor 2 - Garage



Dimensions: 19'11" x 21'2"
Area: 422 sq. ft
Counted as living area: No

Heated: No
Finished: No
Enclosed: Yes
Contiguous: Yes
Permitted: Yes
Wet space: No
Addition: No
Conversion: No

25 Floor 2 - Bedroom



Dimensions: 11'9" x 10'6"
Area: 123 sq. ft
Counted as living area: Yes

Heated: Yes
Finished: Yes
Enclosed: Yes
Contiguous: Yes
Permitted: Yes
Wet space: No
Addition: No
Conversion: No