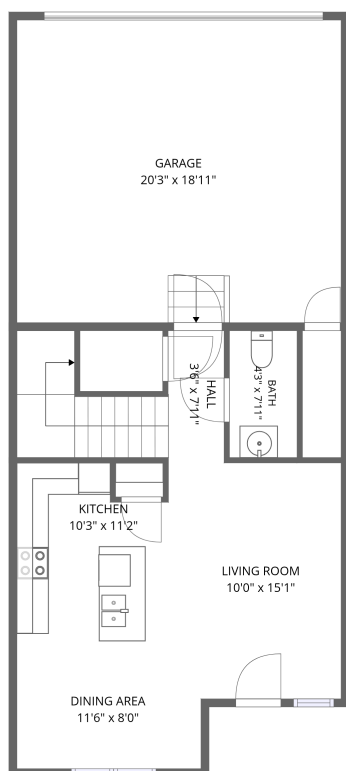
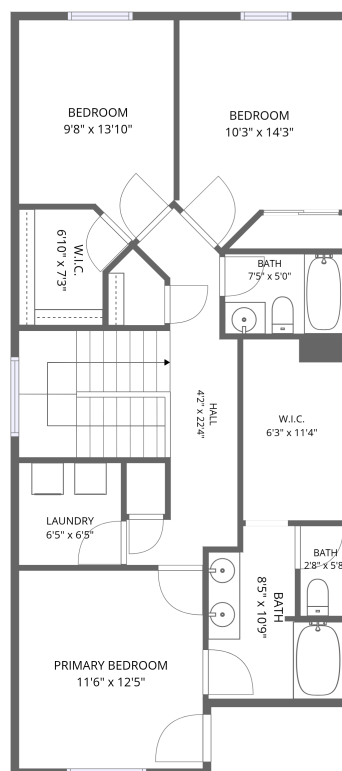


1209 Bistre St, Longmont, CO, US



1st floor



2nd floor

Total Area: 1424 sq. ft

1st Floor: 513 sq. ft, 2nd Floor: 911 sq. ft

Excluded: Garage 383 sq. ft, Walls: 116 sq. ft

Property summary



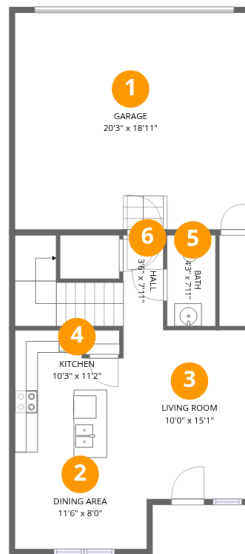
Home data report

1209 Bistre St, Longmont, CO, US

 **1**
Half baths

 **1**
Garages

1209 Bistre St, Longmont, CO, US



Room dimensions

Floor 1

Total: 513sqft

Excluded: 383sqft

#		Dimensions	sqft	Counted as living area
1	Garage	20'3" x 18'11"	383 sq. ft	No
2	Dining Area	11'6" x 8'0"	91 sq. ft	Yes
3	Living Room	10'0" x 15'1"	148 sq. ft	Yes
4	Kitchen	10'3" x 11'2"	103 sq. ft	Yes
5	Bath	4'3" x 7'11"	34 sq. ft	Yes
6	Hall	3'6" x 7'11"	79 sq. ft	Yes

Home data report

1209 Bistre St, Longmont, CO, US



Room dimensions

Floor 2

Total: 911 sqft

Excluded: 0 sqft

#		Dimensions	sqft	Counted as living area
7	Bath	7'5" x 5'0"	37 sq. ft	Yes
8	Bath	8'5" x 10'9"	70 sq. ft	Yes
9	Bedroom	9'8" x 13'10"	117 sq. ft	Yes
10	Bedroom	10'3" x 14'3"	127 sq. ft	Yes
11	Hall	4'2" x 22'4"	165 sq. ft	Yes
12	W.I.C.	6'3" x 11'4"	71 sq. ft	Yes
13	Primary Bedroom	11'6" x 12'5"	143 sq. ft	Yes
14	W.I.C.	6'10" x 7'3"	41 sq. ft	Yes
15	Laundry	6'5" x 6'5"	41 sq. ft	Yes
16	Bath	2'8" x 5'8"	15 sq. ft	Yes

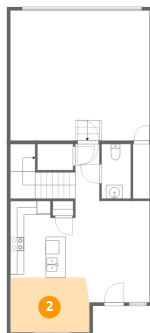
1 Floor 1 - Garage



Dimensions: 20'3" x 18'11"
Area: 383 sq. ft
Counted as living area: No

Heated: No
Finished: No
Enclosed: Yes
Contiguous: Yes
Permitted: Yes
Wet space: No
Addition: No
Conversion: No

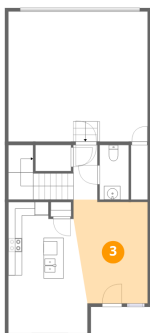
2 Floor 1 - Dining Area



Dimensions: 11'6" x 8'0"
Area: 91 sq. ft
Counted as living area: Yes

Heated: Yes
Finished: Yes
Enclosed: Yes
Contiguous: Yes
Permitted: Yes
Wet space: No
Addition: No
Conversion: No

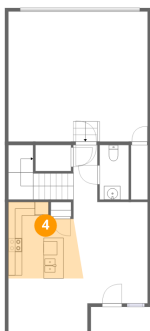
3 Floor 1 - Living Room



Dimensions: 10'0" x 15'1"
Area: 148 sq. ft
Counted as living area: Yes

Heated: Yes
Finished: Yes
Enclosed: Yes
Contiguous: Yes
Permitted: Yes
Wet space: No
Addition: No
Conversion: No

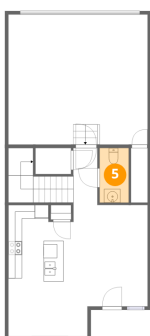
4 Floor 1 - Kitchen



Dimensions: 10'3" x 11'2"
Area: 103 sq. ft
Counted as living area: Yes

Heated: Yes
Finished: Yes
Enclosed: Yes
Contiguous: Yes
Permitted: Yes
Wet space: No
Addition: No
Conversion: No

5 Floor 1 - Bath



Dimensions: 4'3" x 7'11"
Area: 34 sq. ft
Counted as living area: Yes

Heated: Yes
Finished: Yes
Enclosed: Yes
Contiguous: Yes
Permitted: Yes
Wet space: Yes
Addition: No
Conversion: No

6 Floor 1 - Hall



Dimensions: 3'6" x 7'11"
Area: 79 sq. ft
Counted as living area: Yes

Heated: Yes
Finished: Yes
Enclosed: Yes
Contiguous: Yes
Permitted: Yes
Wet space: No
Addition: No
Conversion: No

7 Floor 2 - Bath



Dimensions: 7'5" x 5'0"
Area: 37 sq. ft
Counted as living area: Yes

Heated: Yes
Finished: Yes
Enclosed: Yes
Contiguous: Yes
Permitted: Yes
Wet space: Yes
Addition: No
Conversion: No

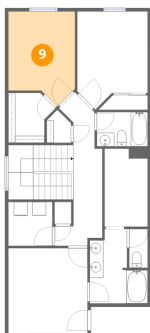
8 Floor 2 - Bath



Dimensions: 8'5" x 10'9"
Area: 70 sq. ft
Counted as living area: Yes

Heated: Yes
Finished: Yes
Enclosed: Yes
Contiguous: Yes
Permitted: Yes
Wet space: Yes
Addition: No
Conversion: No

9 Floor 2 - Bedroom



Dimensions: 9'8" x 13'10"
Area: 117 sq. ft
Counted as living area: Yes

Heated: Yes
Finished: Yes
Enclosed: Yes
Contiguous: Yes
Permitted: Yes
Wet space: No
Addition: No
Conversion: No

10 Floor 2 - Bedroom



Dimensions: 10'3" x 14'3"
Area: 127 sq. ft
Counted as living area: Yes

Heated: Yes
Finished: Yes
Enclosed: Yes
Contiguous: Yes
Permitted: Yes
Wet space: No
Addition: No
Conversion: No

11 Floor 2 - Hall



Dimensions: 4'2" x 22'4"
Area: 165 sq. ft
Counted as living area: Yes

Heated: Yes
Finished: Yes
Enclosed: Yes
Contiguous: Yes
Permitted: Yes
Wet space: No
Addition: No
Conversion: No

12 Floor 2 - W.I.C.



Dimensions: 6'3" x 11'4"
Area: 71 sq. ft
Counted as living area: Yes

Heated: Yes
Finished: Yes
Enclosed: Yes
Contiguous: Yes
Permitted: Yes
Wet space: No
Addition: No
Conversion: No

13 Floor 2 - Primary Bedroom



Dimensions: 11'6" x 12'5"
Area: 143 sq. ft
Counted as living area: Yes

Heated: Yes
Finished: Yes
Enclosed: Yes
Contiguous: Yes
Permitted: Yes
Wet space: No
Addition: No
Conversion: No

14 Floor 2 - W.I.C.



Dimensions: 6'10" x 7'3"
Area: 41 sq. ft
Counted as living area: Yes

Heated: Yes
Finished: Yes
Enclosed: Yes
Contiguous: Yes
Permitted: Yes
Wet space: No
Addition: No
Conversion: No

15 Floor 2 - Laundry



Dimensions: 6'5" x 6'5"
Area: 41 sq. ft
Counted as living area: Yes

Heated: Yes
Finished: Yes
Enclosed: Yes
Contiguous: Yes
Permitted: Yes
Wet space: No
Addition: No
Conversion: No

16 Floor 2 - Bath



Dimensions: 2'8" x 5'8"
Area: 15 sq. ft
Counted as living area: Yes

Heated: Yes
Finished: Yes
Enclosed: Yes
Contiguous: Yes
Permitted: Yes
Wet space: Yes
Addition: No
Conversion: No