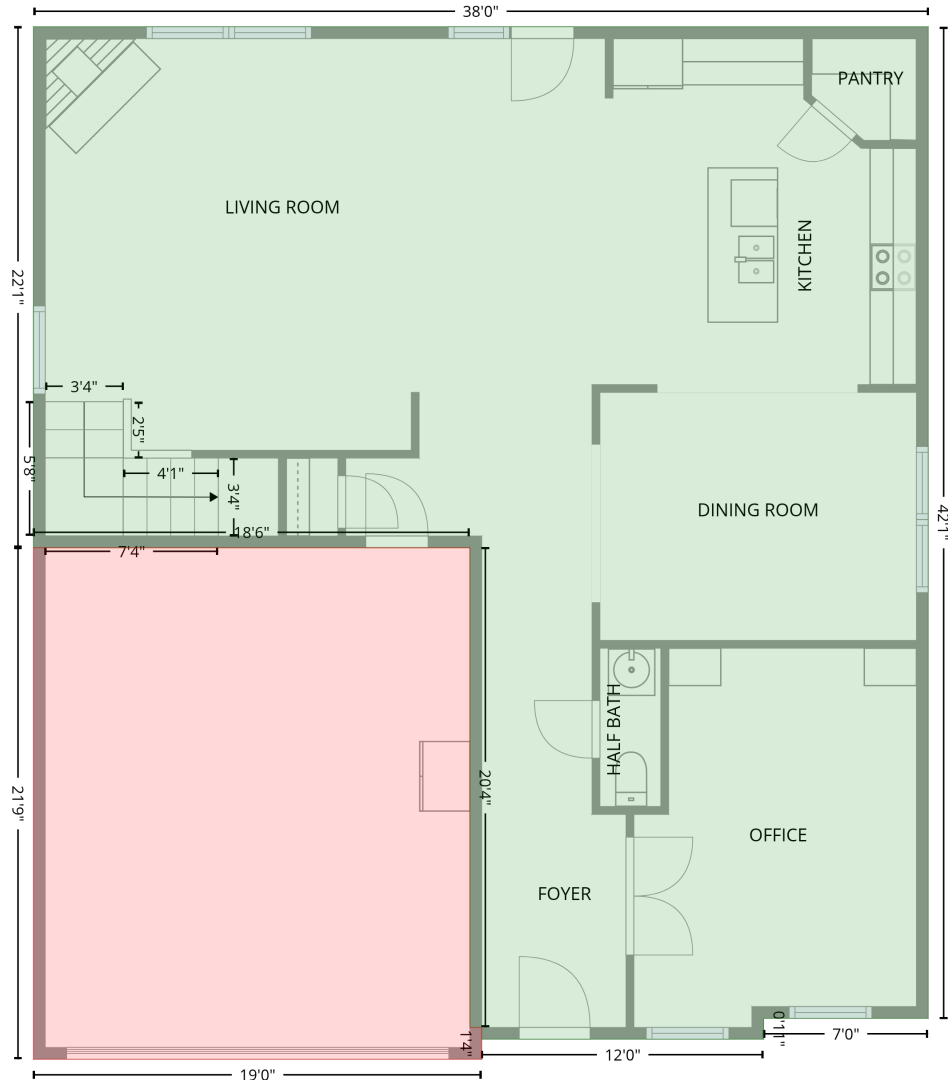


# 3748 Streamside Dr, High Point, NC, US

Gross Living Area: 2883 sq. ft

## Level 1

1st floor  
[AREA: 1240]



GARAGE (1)  
[AREA: 403]

Space	Area (sq. ft)	Calculation
1st floor (Living area)	1240	Coordinate Polygon Area Algorithm using inches $-((459.4 + 459.4) * (6.6 - 511.8) + (459.4 + 375.6) * (511.8 - 511.8) + (375.6 + 375.6) * (511.8 - 522.4) + (375.6 + 231.9) * (522.4 - 522.4) + (231.9 + 231.9) * (522.4 - 516.4) + (231.9 + 225.9) * (516.4 - 516.4) + (225.9 + 225.9) * (516.4 - 272) + (225.9 + 3.4) * (272 - 272) + (3.4 + 3.4) * (272 - 6.6) + (3.4 + 459.4) * (6.6 - 6.6)) * 0.5 * 0.00694$
GARAGE (Non-living area)	403	$-((225.9 + 225.9) * (272 - 516.4) + (225.9 + 231.9) * (516.4 - 516.4) + (231.9 + 231.9) * (516.4 - 532.7) + (231.9 + 3.4) * (532.7 - 532.7) + (3.4 + 3.4) * (532.7 - 272) + (3.4 + 225.9) * (272 - 272)) * 0.5 * 0.00694$

# 3748 Streamside Dr, High Point, NC, US

Gross Living Area: 2883 sq. ft

## Level 2

2nd floor  
[AREA: 1643]



Space	Area (sq. ft)	Calculation <small>Coordinate Polygon Area Algorithm using inches</small>
2nd floor (Living area)	1643	$-\left((459.4 + 459.4) * (6.6 - 511.8) + (459.4 + 375.6) * (511.8 - 511.8) + (375.6 + 375.6) * (511.8 - 522.4) + (375.6 + 231.9) * (522.4 - 522.4) + (231.9 + 231.9) * (522.4 - 532.7) + (231.9 + 3.4) * (532.7 - 532.7) + (3.4 + 3.4) * (532.7 - 6.6) + (3.4 + 459.4) * (6.6 - 6.6)\right) * 0.5 * 0.00694$