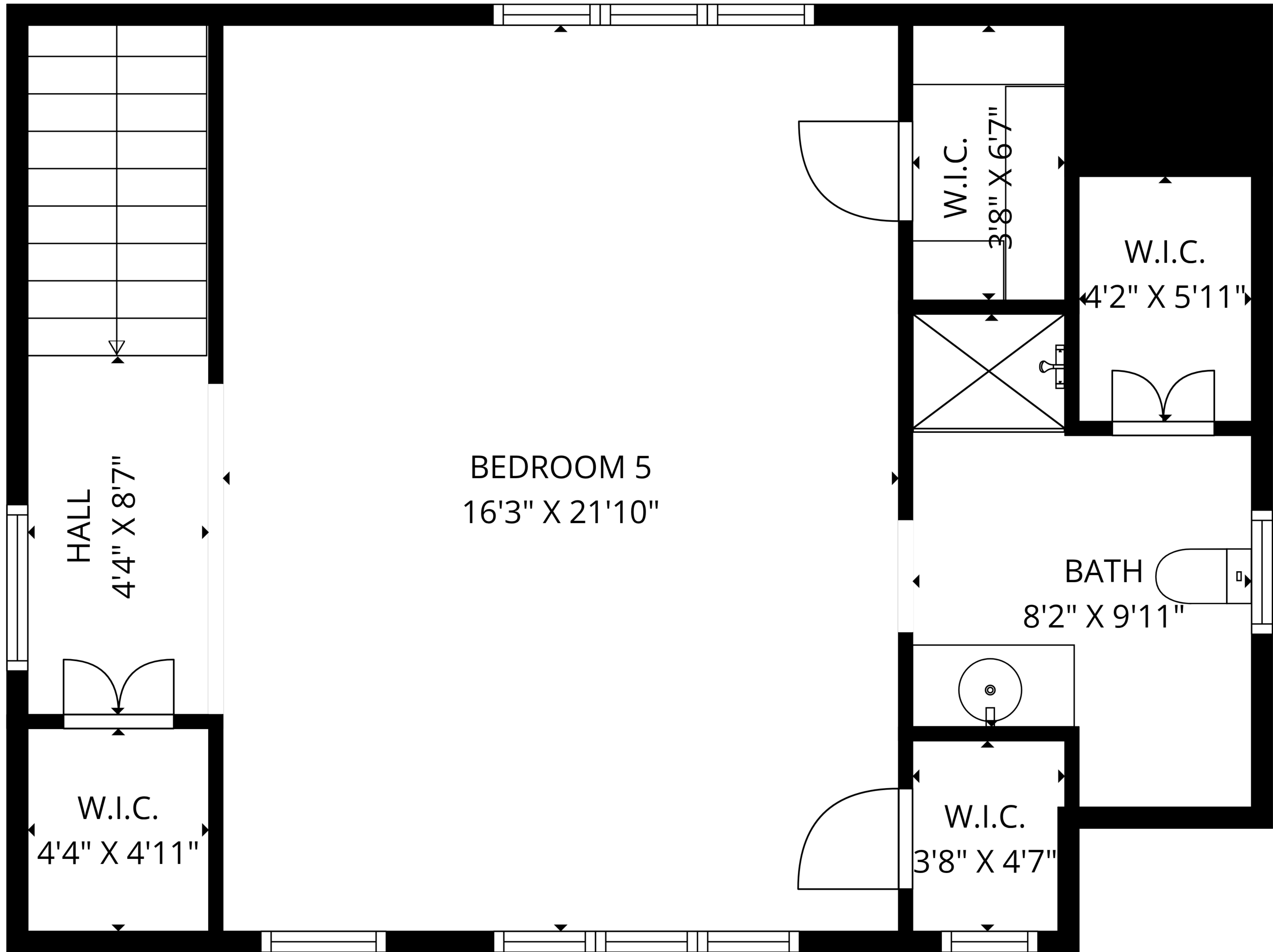


**TOTAL: 3700 sq. ft**

1st floor: 2231 sq. ft, 2ND FLOOR OVER GARAGE: 629 sq. ft, 2ND FLOOR: 840 sq. ft  
 EXCLUDED AREAS: GARAGE: 642 sq. ft, PORCH: 172 sq. ft, PATIO: 1246 sq. ft,  
 LOW CEILING: 46 sq. ft, BEDROOM 4: 140 sq. ft, WALLS: 314 sq. ft

Measurements Are Deemed Highly Reliable But Not Guaranteed



BEDROOM 5  
16'3" X 21'10"

HALL  
4'4" X 8'7"

W.I.C.  
4'4" X 4'11"

W.I.C.  
3'8" X 6'7"

W.I.C.  
4'2" X 5'11"

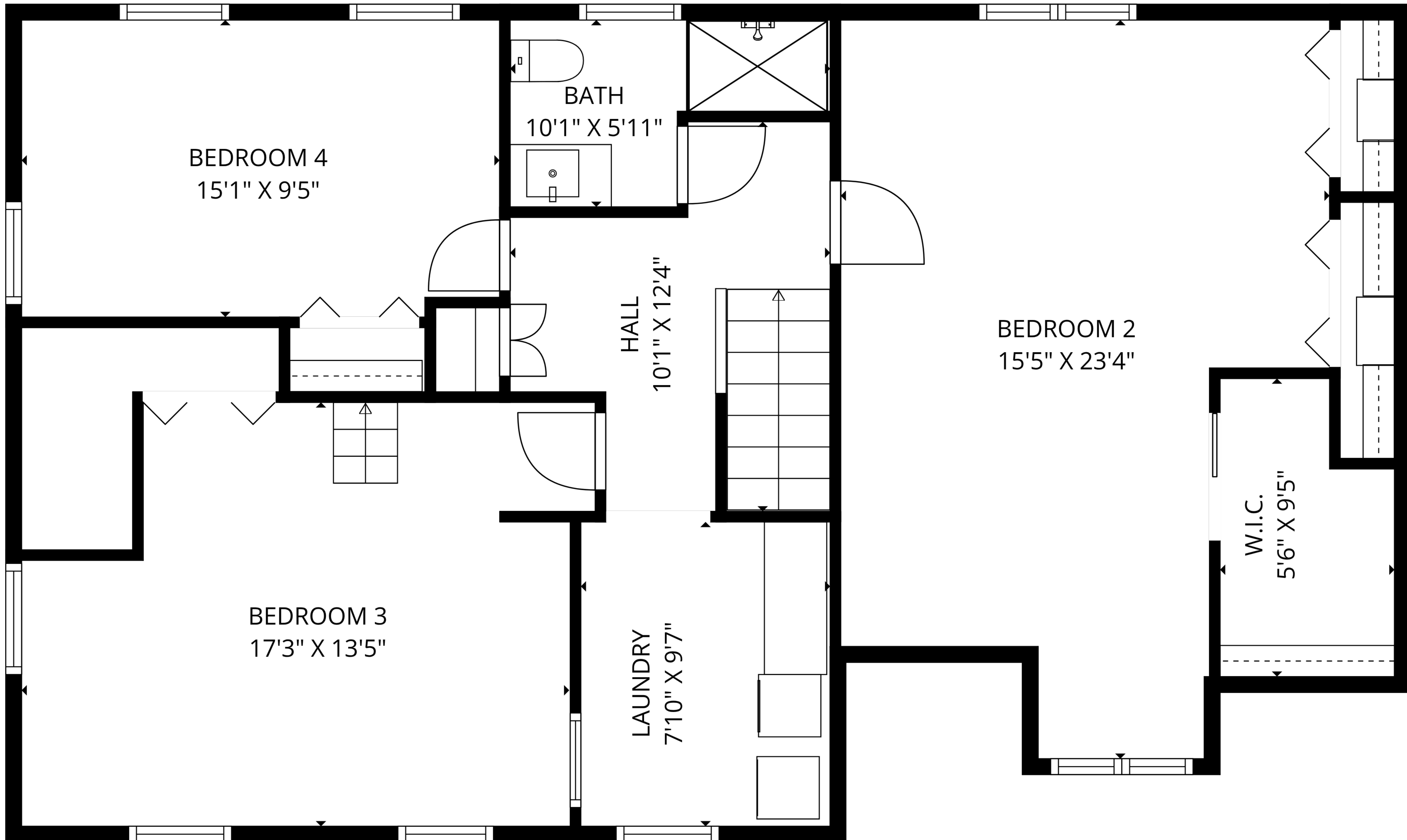
BATH  
8'2" X 9'11"

W.I.C.  
3'8" X 4'7"

**TOTAL: 3700 sq. ft**

1st floor: 2231 sq. ft, 2ND FLOOR OVER GARAGE: 629 sq. ft, 2ND FLOOR: 840 sq. ft  
EXCLUDED AREAS: GARAGE: 642 sq. ft, PORCH: 172 sq. ft, PATIO: 1246 sq. ft,  
LOW CEILING: 46 sq. ft, BEDROOM 4: 140 sq. ft, WALLS: 314 sq. ft

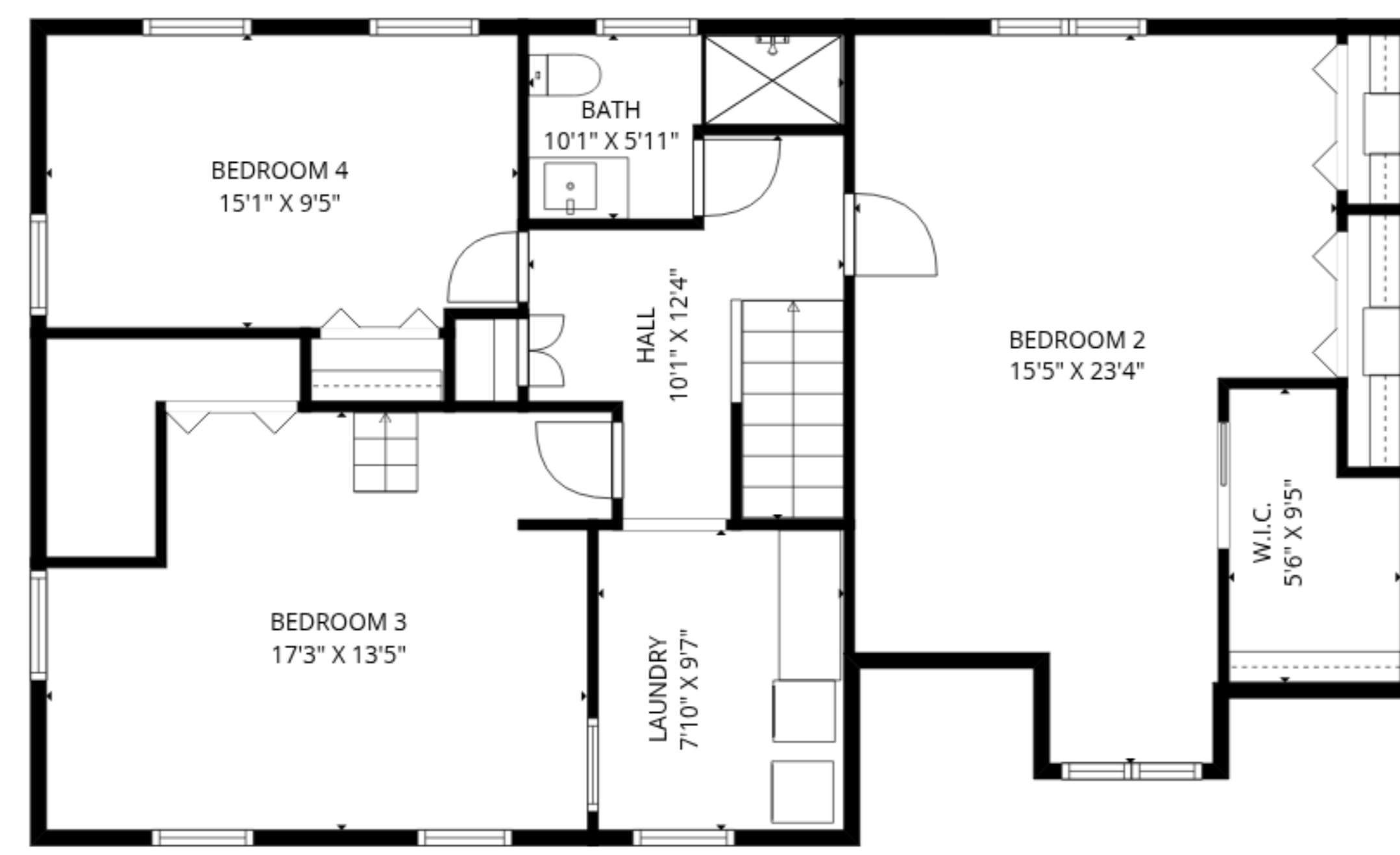
Measurements Are Deemed Highly Reliable But Not Guaranteed



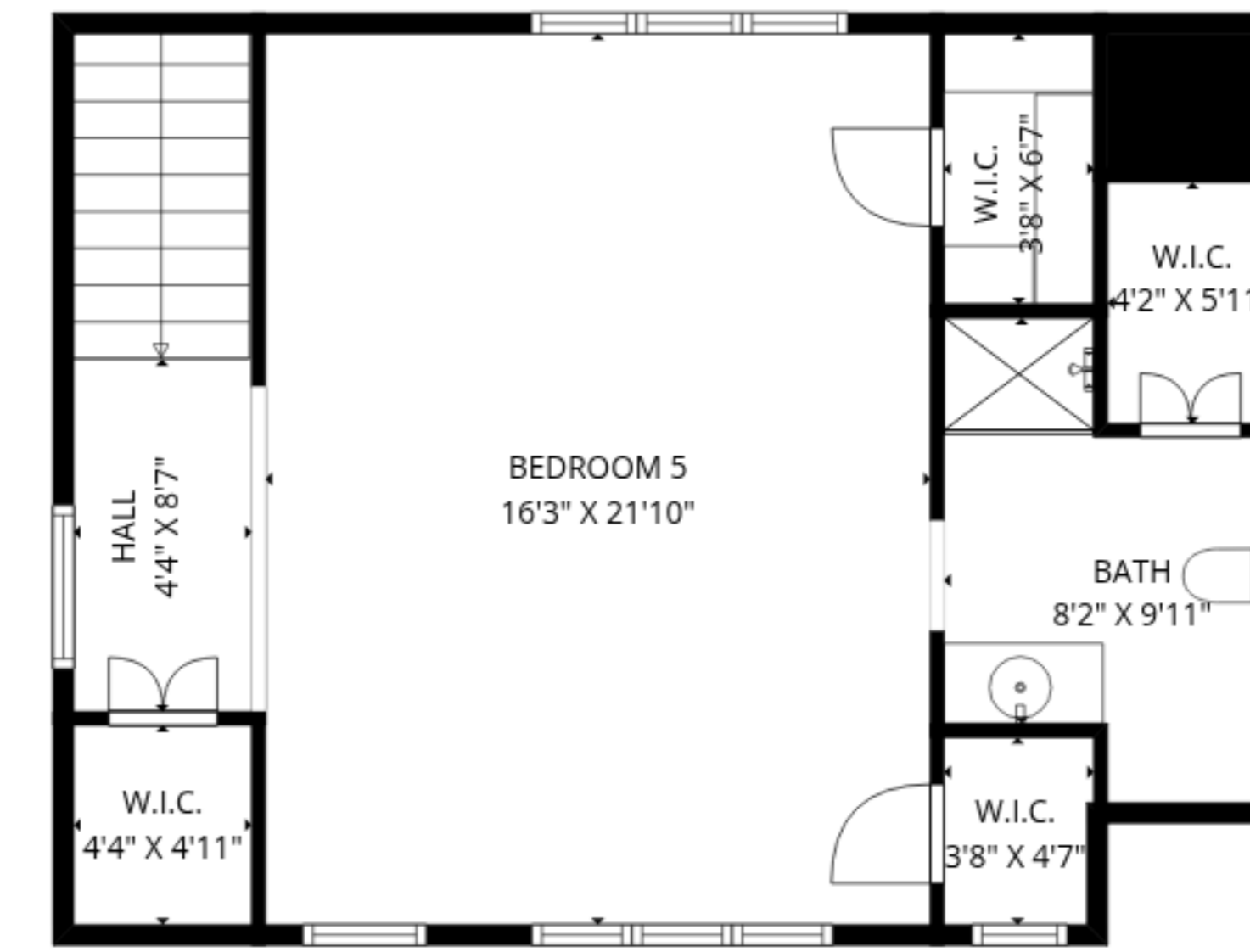
**TOTAL: 3700 sq. ft**

1st floor: 2231 sq. ft, 2ND FLOOR OVER GARAGE: 629 sq. ft, 2ND FLOOR: 840 sq. ft  
 EXCLUDED AREAS: GARAGE: 642 sq. ft, PORCH: 172 sq. ft, PATIO: 1246 sq. ft,  
 LOW CEILING: 46 sq. ft, BEDROOM 4: 140 sq. ft, WALLS: 314 sq. ft

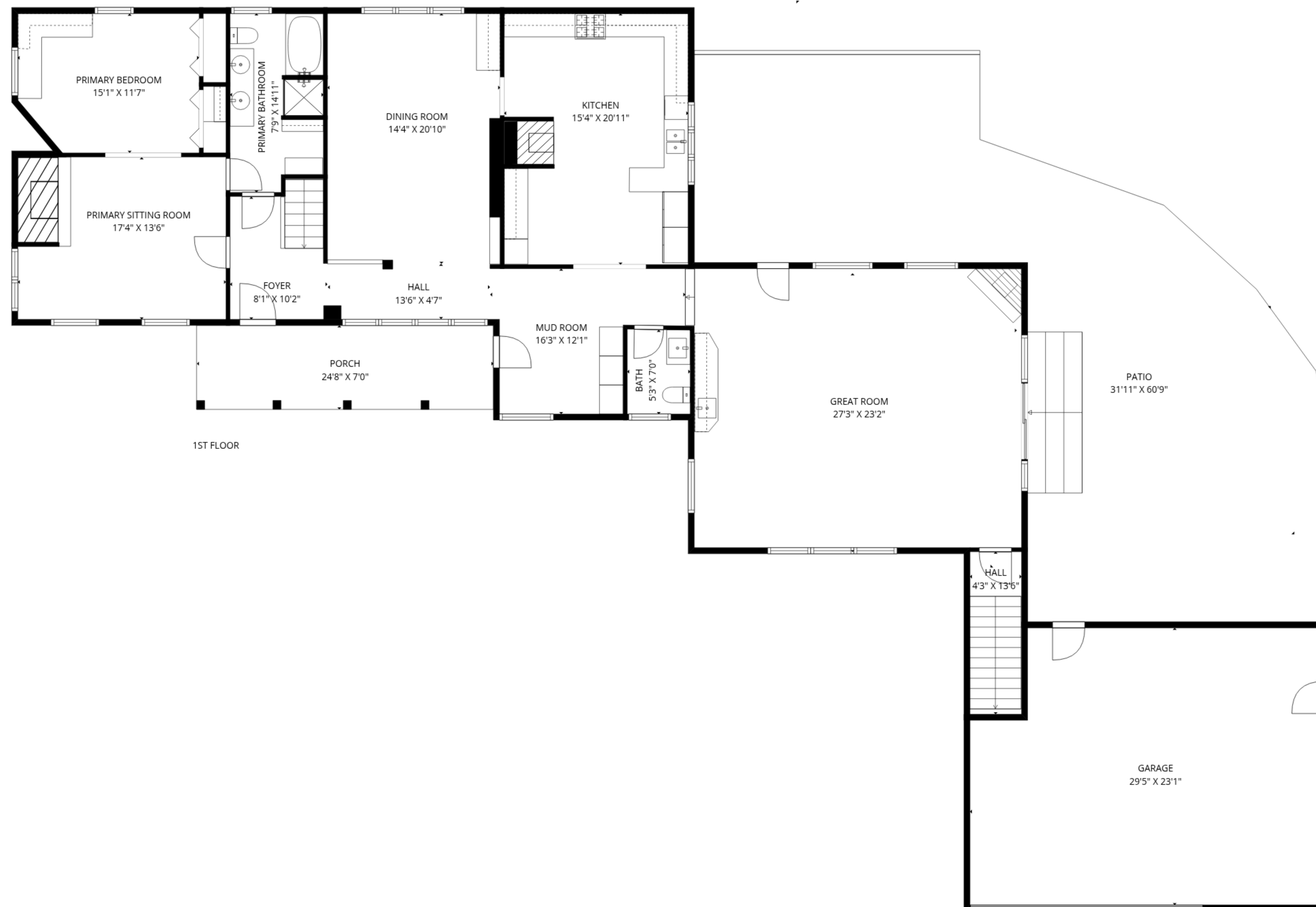
Measurements Are Deemed Highly Reliable But Not Guaranteed



2ND FLOOR



2ND FLOOR OVER GARAGE



1ST FLOOR

**TOTAL: 3700 sq. ft**

1st floor: 2231 sq. ft, 2ND FLOOR OVER GARAGE: 629 sq. ft, 2ND FLOOR: 840 sq. ft  
 EXCLUDED AREAS: GARAGE: 642 sq. ft, PORCH: 172 sq. ft, PATIO: 1246 sq. ft,  
 LOW CEILING: 46 sq. ft, BEDROOM 4: 140 sq. ft, WALLS: 314 sq. ft