

Home data report

1631 Seton Family Walk, Orange Park, FL, US



Total Area: 2736 sq. ft

1st Floor: 2736 sq. ft

Excluded: Porch 252 sq. ft, Walls: 147 sq. ft

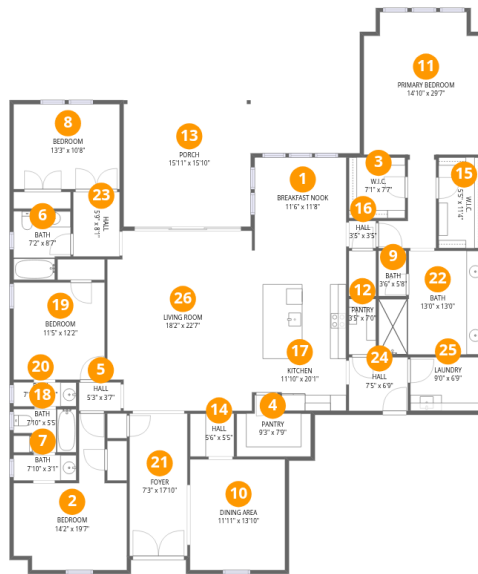
Property summary

 **1** Floors

 **4** Bedrooms

 **3** Bathrooms

1631 Seton Family Walk, Orange Park, FL, US



Room dimensions

Floor 1

Total: 2736 sqft Excluded: 252 sqft

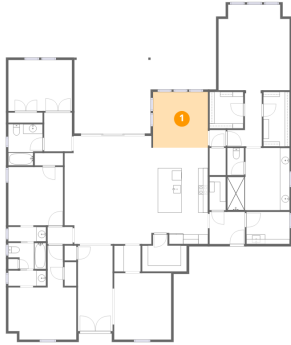
#		Dimensions	sqft	Counted as living area
1	Breakfast Nook	11'6" x 11'8"	134 sq. ft	Yes
2	Bedroom	14'2" x 19'7"	178 sq. ft	Yes
3	W.I.C.	7'1" x 7'7"	54 sq. ft	Yes
4	Pantry	9'3" x 7'9"	57 sq. ft	Yes
5	Hall	5'3" x 3'7"	19 sq. ft	Yes
6	Bath	7'2" x 8'7"	56 sq. ft	Yes
7	Bath	7'10" x 3'1"	25 sq. ft	Yes
8	Bedroom	13'3" x 10'8"	142 sq. ft	Yes
9	Bath	3'6" x 5'8"	20 sq. ft	Yes
10	Dining Area	11'11" x 13'10"	165 sq. ft	Yes
11	Primary Bedroom	14'10" x 29'7"	308 sq. ft	Yes

Home data report

1631 Seton Family Walk, Orange Park, FL, US

#		Dimensions	sqft	Counted as living area
12	Pantry	3'5" x 7'0"	24 sq. ft	Yes
13	Porch	15'11" x 15'10"	252 sq. ft	No
14	Hall	5'6" x 5'5"	30 sq. ft	Yes
15	W.I.C.	5'5" x 11'4"	62 sq. ft	Yes
16	Hall	3'5" x 3'5"	12 sq. ft	Yes
17	Kitchen	11'10" x 20'1"	229 sq. ft	Yes
18	Bath	7'10" x 5'5"	37 sq. ft	Yes
19	Bedroom	11'5" x 12'2"	139 sq. ft	Yes
20	Bath	7'10" x 2'11"	24 sq. ft	Yes
21	Foyer	7'3" x 17'10"	129 sq. ft	Yes
22	Bath	13'0" x 13'0"	146 sq. ft	Yes
23	Hall	5'9" x 8'1"	47 sq. ft	Yes
24	Hall	7'5" x 6'9"	50 sq. ft	Yes
25	Laundry	9'0" x 6'9"	61 sq. ft	Yes
26	Living Room	18'2" x 22'7"	395 sq. ft	Yes

1 Floor 1 - Breakfast Nook



Dimensions: 11'6" x 11'8"
Area: 134 sq. ft
Counted as living area: Yes

Heated: Yes
Finished: Yes
Enclosed: Yes
Contiguous: Yes
Permitted: Yes
Wet space: No
Addition: No
Conversion: No

2 Floor 1 - Bedroom



Dimensions: 14'2" x 19'7"
Area: 178 sq. ft
Counted as living area: Yes

Heated: Yes
Finished: Yes
Enclosed: Yes
Contiguous: Yes
Permitted: Yes
Wet space: No
Addition: No
Conversion: No

3 Floor 1 - W.I.C.



Dimensions: 7'1" x 7'7"
Area: 54 sq. ft
Counted as living area: Yes

Heated: Yes
Finished: Yes
Enclosed: Yes
Contiguous: Yes
Permitted: Yes
Wet space: No
Addition: No
Conversion: No

4 Floor 1 - Pantry



Dimensions: 9'3" x 7'9"
Area: 57 sq. ft
Counted as living area: Yes

Heated: Yes
Finished: Yes
Enclosed: Yes
Contiguous: Yes
Permitted: Yes
Wet space: No
Addition: No
Conversion: No

5 Floor 1 - Hall



Dimensions: 5'3" x 3'7"
Area: 19 sq. ft
Counted as living area: Yes

Heated: Yes
Finished: Yes
Enclosed: Yes
Contiguous: Yes
Permitted: Yes
Wet space: No
Addition: No
Conversion: No

6 Floor 1 - Bath



Dimensions: 7'2" x 8'7"
Area: 56 sq. ft
Counted as living area: Yes

Heated: Yes
Finished: Yes
Enclosed: Yes
Contiguous: Yes
Permitted: Yes
Wet space: Yes
Addition: No
Conversion: No

7 Floor 1 - Bath



Dimensions: 7'10" x 3'1"
Area: 25 sq. ft
Counted as living area: Yes

Heated: Yes
Finished: Yes
Enclosed: Yes
Contiguous: Yes
Permitted: Yes
Wet space: Yes
Addition: No
Conversion: No

8 Floor 1 - Bedroom



Dimensions: 13'3" x 10'8"
Area: 142 sq. ft
Counted as living area: Yes

Heated: Yes
Finished: Yes
Enclosed: Yes
Contiguous: Yes
Permitted: Yes
Wet space: No
Addition: No
Conversion: No

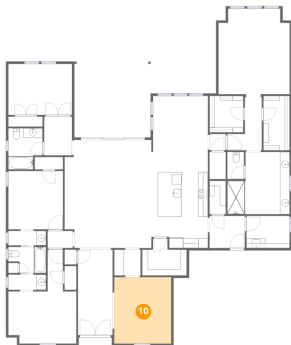
9 Floor 1 - Bath



Dimensions: 3'6" x 5'8"
Area: 20 sq. ft
Counted as living area: Yes

Heated: Yes
Finished: Yes
Enclosed: Yes
Contiguous: Yes
Permitted: Yes
Wet space: Yes
Addition: No
Conversion: No

10 Floor 1 - Dining Area



Dimensions: 11'11" x 13'10"
Area: 165 sq. ft
Counted as living area: Yes

Heated: Yes
Finished: Yes
Enclosed: Yes
Contiguous: Yes
Permitted: Yes
Wet space: No
Addition: No
Conversion: No

11 Floor 1 - Primary Bedroom



Dimensions: 14'10" x 29'7"
Area: 308 sq. ft
Counted as living area: Yes

Heated: Yes
Finished: Yes
Enclosed: Yes
Contiguous: Yes
Permitted: Yes
Wet space: No
Addition: No
Conversion: No

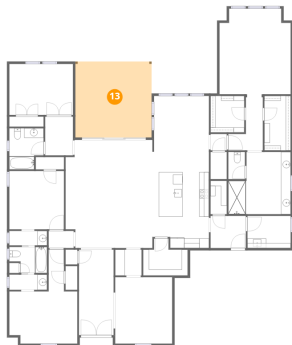
12 Floor 1 - Pantry



Dimensions: 3'5" x 7'0"
Area: 24 sq. ft
Counted as living area: Yes

Heated: Yes
Finished: Yes
Enclosed: Yes
Contiguous: Yes
Permitted: Yes
Wet space: No
Addition: No
Conversion: No

13 Floor 1 - Porch



Dimensions: 15'11" x 15'10"
Area: 252 sq. ft
Counted as living area: No

Heated: No
Finished: No
Enclosed: No
Contiguous: Yes
Permitted: Yes
Wet space: No
Addition: No
Conversion: No

14 Floor 1 - Hall



Dimensions: 5'6" x 5'5"
Area: 30 sq. ft
Counted as living area: Yes

Heated: Yes
Finished: Yes
Enclosed: Yes
Contiguous: Yes
Permitted: Yes
Wet space: No
Addition: No
Conversion: No

15 Floor 1 - W.I.C.



Dimensions: 5'5" x 11'4"
Area: 62 sq. ft
Counted as living area: Yes

Heated: Yes
Finished: Yes
Enclosed: Yes
Contiguous: Yes
Permitted: Yes
Wet space: No
Addition: No
Conversion: No

16 Floor 1 - Hall



Dimensions: 3'5" x 3'5"
Area: 12 sq. ft
Counted as living area: Yes

Heated: Yes
Finished: Yes
Enclosed: Yes
Contiguous: Yes
Permitted: Yes
Wet space: No
Addition: No
Conversion: No

17 Floor 1 - Kitchen



Dimensions: 11'10" x 20'1"
Area: 229 sq. ft
Counted as living area: Yes

Heated: Yes
Finished: Yes
Enclosed: Yes
Contiguous: Yes
Permitted: Yes
Wet space: No
Addition: No
Conversion: No

18 Floor 1 - Bath



Dimensions: 7'10" x 5'5"
Area: 37 sq. ft
Counted as living area: Yes

Heated: Yes
Finished: Yes
Enclosed: Yes
Contiguous: Yes
Permitted: Yes
Wet space: Yes
Addition: No
Conversion: No

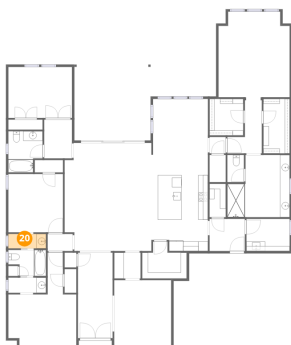
19 Floor 1 - Bedroom



Dimensions: 11'5" x 12'2"
Area: 139 sq. ft
Counted as living area: Yes

Heated: Yes
Finished: Yes
Enclosed: Yes
Contiguous: Yes
Permitted: Yes
Wet space: No
Addition: No
Conversion: No

20 Floor 1 - Bath



Dimensions: 7'10" x 2'11"
Area: 24 sq. ft
Counted as living area: Yes

Heated: Yes
Finished: Yes
Enclosed: Yes
Contiguous: Yes
Permitted: Yes
Wet space: Yes
Addition: No
Conversion: No

21 Floor 1 - Foyer



Dimensions: 7'3" x 17'10"
Area: 129 sq. ft
Counted as living area: Yes

Heated: Yes
Finished: Yes
Enclosed: Yes
Contiguous: Yes
Permitted: Yes
Wet space: No
Addition: No
Conversion: No

22 Floor 1 - Bath



Dimensions: 13'0" x 13'0"
Area: 146 sq. ft
Counted as living area: Yes

Heated: Yes
Finished: Yes
Enclosed: Yes
Contiguous: Yes
Permitted: Yes
Wet space: Yes
Addition: No
Conversion: No

23 Floor 1 - Hall



Dimensions: 5'9" x 8'1"
Area: 47 sq. ft
Counted as living area: Yes

Heated: Yes
Finished: Yes
Enclosed: Yes
Contiguous: Yes
Permitted: Yes
Wet space: No
Addition: No
Conversion: No

24 Floor 1 - Hall



Dimensions: 7'5" x 6'9"
Area: 50 sq. ft
Counted as living area: Yes

Heated: Yes
Finished: Yes
Enclosed: Yes
Contiguous: Yes
Permitted: Yes
Wet space: No
Addition: No
Conversion: No

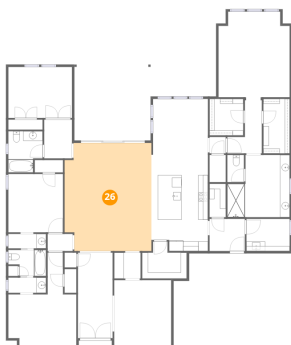
25 Floor 1 - Laundry



Dimensions: 9'0" x 6'9"
Area: 61 sq. ft
Counted as living area: Yes

Heated: Yes
Finished: Yes
Enclosed: Yes
Contiguous: Yes
Permitted: Yes
Wet space: No
Addition: No
Conversion: No

26 Floor 1 - Living Room



Dimensions: 18'2" x 22'7"
Area: 395 sq. ft
Counted as living area: Yes

Heated: Yes
Finished: Yes
Enclosed: Yes
Contiguous: Yes
Permitted: Yes
Wet space: No
Addition: No
Conversion: No