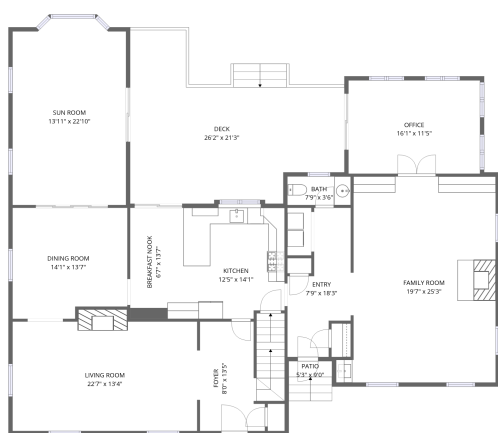
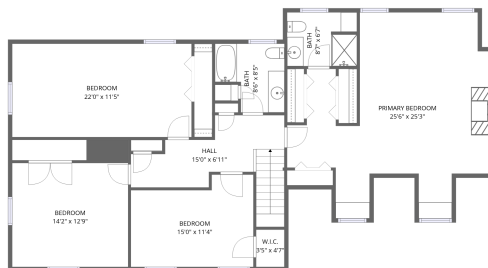


# Home data report

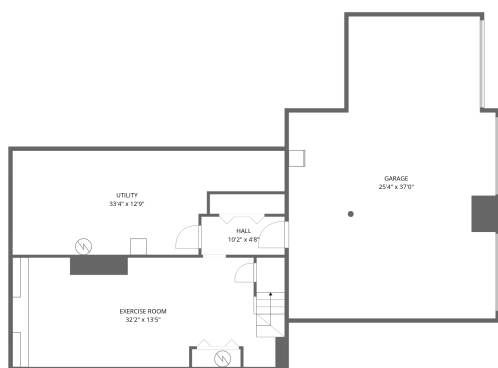
## 11 Perley Ln, Boxford, MA, US



1st floor



2nd floor



Basement

**Total Area: 4037 sq. ft**

Basement: 524 sq. ft, 1st Floor: 2048 sq. ft, 2nd Floor: 1465 sq. ft

Excluded: Undefined 13 sq. ft, Utility 346 sq. ft, Garage 830 sq. ft, Deck 410 sq. ft, Patio 48 sq. ft, Walls: 344 sq. ft

### Property summary

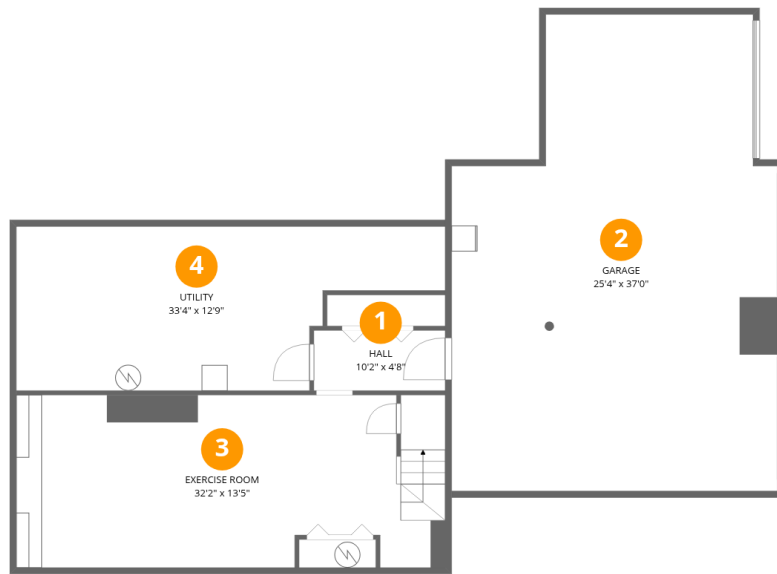


Home data report

# 11 Perley Ln,Boxford,MA,US

 **1**  
Half baths

 **1**  
Garages



## Room dimensions

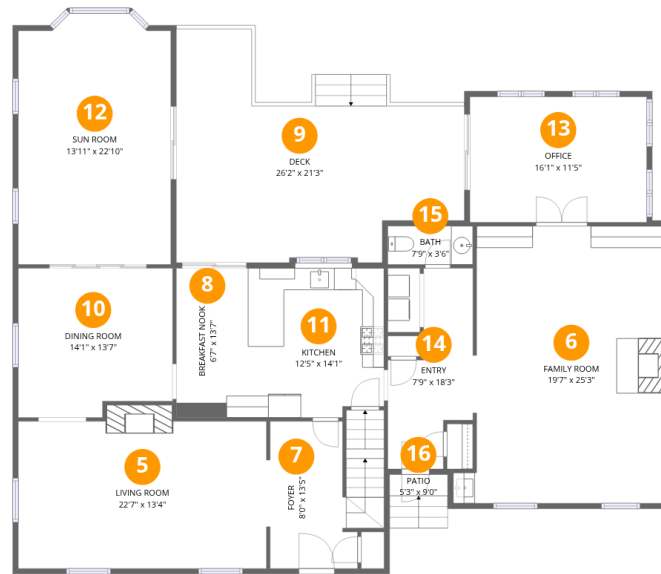
Floor 1 Below grade

Total:524sqft

Excluded: 1189sqft

#		Dimensions	sqft	Counted as living area
1	Hall	10'2" x 4'8"	48 sq. ft	Yes
2	Garage	25'4" x 37'0"	938 sq. ft	No
3	Exercise Room	32'2" x 13'5"	432 sq. ft	Yes
4	Utility	33'4" x 12'9"	425 sq. ft	No

# 11 Perley Ln,Boxford,MA,US



## Room dimensions

Floor 2

Total:2048sqft

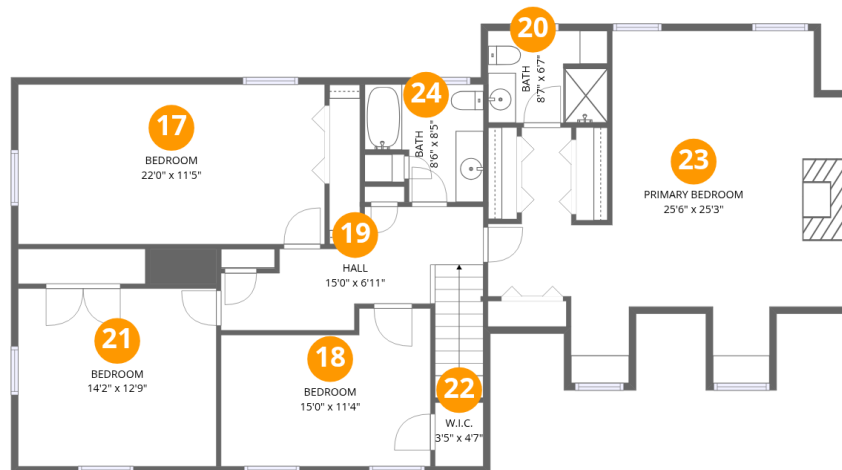
Excluded: 458sqft

#		Dimensions	sqft	Counted as living area
5	Living Room	22'7" x 13'4"	301 sq. ft	Yes
6	Family Room	19'7" x 25'3"	494 sq. ft	Yes
7	Foyer	8'0" x 13'5"	107 sq. ft	Yes
8	Breakfast Nook	6'7" x 13'7"	89 sq. ft	Yes
9	Deck	26'2" x 21'3"	557 sq. ft	No
10	Dining Room	14'1" x 13'7"	191 sq. ft	Yes
11	Kitchen	12'5" x 14'1"	174 sq. ft	Yes
12	Sun Room	13'11" x 22'10"	317 sq. ft	Yes
13	Office	16'1" x 11'5"	184 sq. ft	Yes
14	Entry	7'9" x 18'3"	142 sq. ft	Yes
15	Bath	7'9" x 3'6"	27 sq. ft	Yes

Home data report

**11 Perley Ln,Boxford,MA,US**

#		Dimensions	sqft	Counted as living area
16	Patio	5'3" x 9'0"	47 sq. ft	No



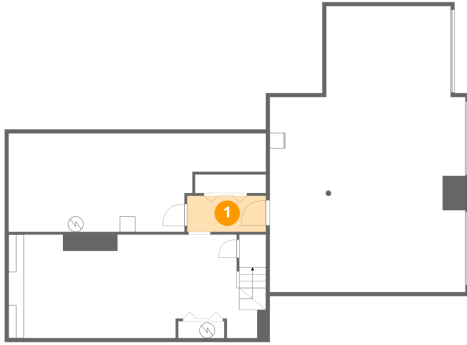
## Room dimensions

Floor 3

Total:1465sqft Excluded: 0sqft

#		Dimensions	sqft	Counted as living area
17	Bedroom	22'0" x 11'5"	251 sq. ft	Yes
18	Bedroom	15'0" x 11'4"	169 sq. ft	Yes
19	Hall	15'0" x 6'11"	104 sq. ft	Yes
20	Bath	8'7" x 6'7"	56 sq. ft	Yes
21	Bedroom	14'2" x 12'9"	181 sq. ft	Yes
22	W.I.C.	3'5" x 4'7"	16 sq. ft	Yes
23	Primary Bedroom	25'6" x 25'3"	644 sq. ft	Yes
24	Bath	8'6" x 8'5"	72 sq. ft	Yes

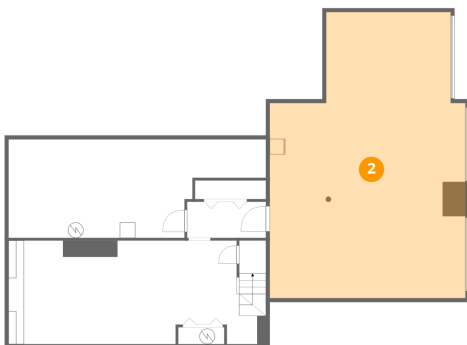
## 1 Floor 1 - Hall



Dimensions: 10'2" x 4'8"  
Area: 48 sq. ft  
Counted as living area: Yes

Heated: Yes  
Finished: Yes  
Enclosed: Yes  
Contiguous: Yes  
Permitted: Yes  
Wet space: No  
Addition: No  
Conversion: No

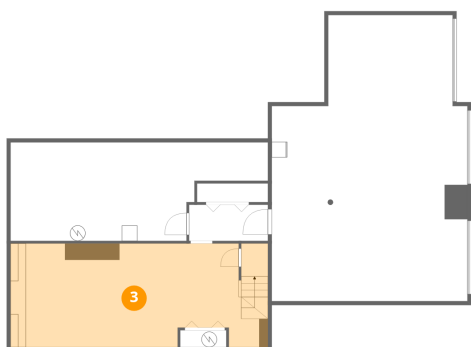
## 2 Floor 1 - Garage



Dimensions: 25'4" x 37'0"  
Area: 938 sq. ft  
Counted as living area: No

Heated: No  
Finished: No  
Enclosed: Yes  
Contiguous: Yes  
Permitted: Yes  
Wet space: No  
Addition: No  
Conversion: No

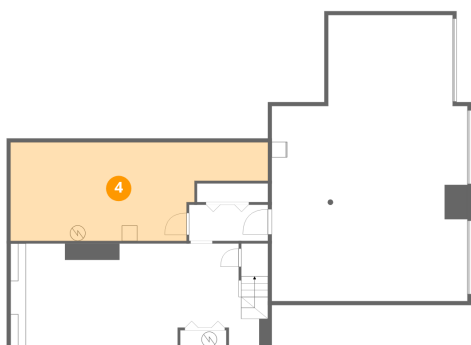
### 3 Floor 1 - Exercise Room



Dimensions: 32'2" x 13'5"  
Area: 432 sq. ft  
Counted as living area: Yes

Heated: Yes  
Finished: Yes  
Enclosed: Yes  
Contiguous: Yes  
Permitted: Yes  
Wet space: No  
Addition: No  
Conversion: No

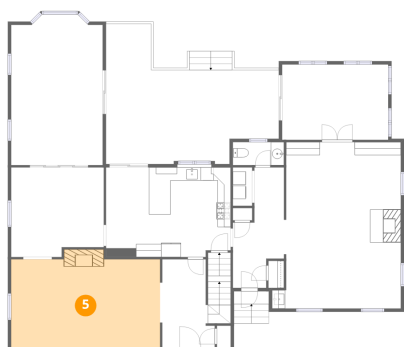
### 4 Floor 1 - Utility



Dimensions: 33'4" x 12'9"  
Area: 425 sq. ft  
Counted as living area: No

Heated: Yes  
Finished: No  
Enclosed: Yes  
Contiguous: Yes  
Permitted: Yes  
Wet space: No  
Addition: No  
Conversion: No

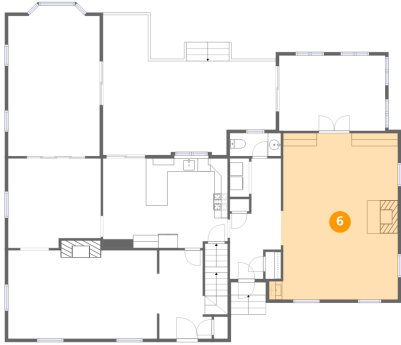
### 5 Floor 2 - Living Room



Dimensions: 22'7" x 13'4"  
Area: 301 sq. ft  
Counted as living area: Yes

Heated: Yes  
Finished: Yes  
Enclosed: Yes  
Contiguous: Yes  
Permitted: Yes  
Wet space: No  
Addition: No  
Conversion: No

## 6 Floor 2 - Family Room



Dimensions: 19'7" x 25'3"  
Area: 494 sq. ft  
Counted as living area: Yes

Heated: Yes  
Finished: Yes  
Enclosed: Yes  
Contiguous: Yes  
Permitted: Yes  
Wet space: No  
Addition: No  
Conversion: No

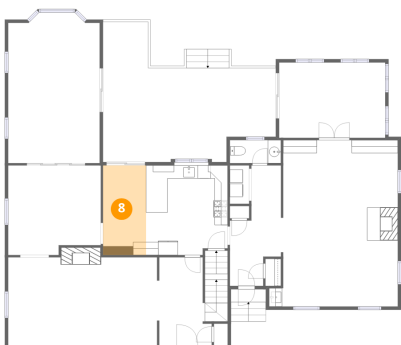
## 7 Floor 2 - Foyer



Dimensions: 8'0" x 13'5"  
Area: 107 sq. ft  
Counted as living area: Yes

Heated: Yes  
Finished: Yes  
Enclosed: Yes  
Contiguous: Yes  
Permitted: Yes  
Wet space: No  
Addition: No  
Conversion: No

## 8 Floor 2 - Breakfast Nook



Dimensions: 6'7" x 13'7"  
Area: 89 sq. ft  
Counted as living area: Yes

Heated: Yes  
Finished: Yes  
Enclosed: Yes  
Contiguous: Yes  
Permitted: Yes  
Wet space: No  
Addition: No  
Conversion: No

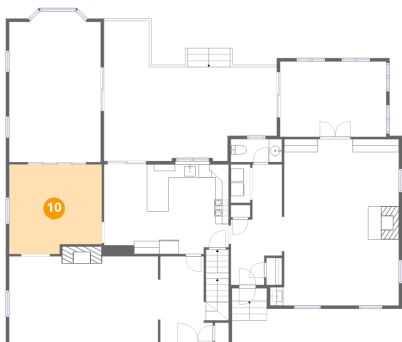
## 9 Floor 2 - Deck



Dimensions: 26'2" x 21'3"  
Area: 557 sq. ft  
Counted as living area: No

Heated: No  
Finished: No  
Enclosed: No  
Contiguous: Yes  
Permitted: Yes  
Wet space: No  
Addition: No  
Conversion: No

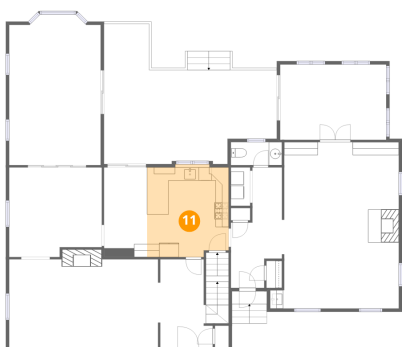
## 10 Floor 2 - Dining Room



Dimensions: 14'1" x 13'7"  
Area: 191 sq. ft  
Counted as living area: Yes

Heated: Yes  
Finished: Yes  
Enclosed: Yes  
Contiguous: Yes  
Permitted: Yes  
Wet space: No  
Addition: No  
Conversion: No

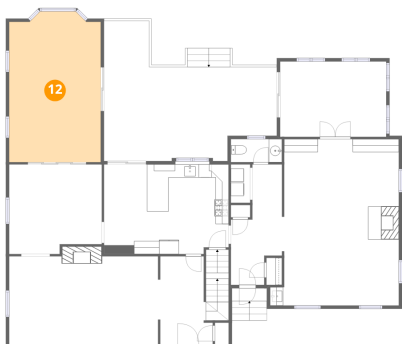
## 11 Floor 2 - Kitchen



Dimensions: 12'5" x 14'1"  
Area: 174 sq. ft  
Counted as living area: Yes

Heated: Yes  
Finished: Yes  
Enclosed: Yes  
Contiguous: Yes  
Permitted: Yes  
Wet space: No  
Addition: No  
Conversion: No

## 12 Floor 2 - Sun Room



Dimensions: 13'11" x 22'10"

Area: 317 sq. ft

Counted as living area: Yes

Heated: Yes

Finished: Yes

Enclosed: Yes

Contiguous: Yes

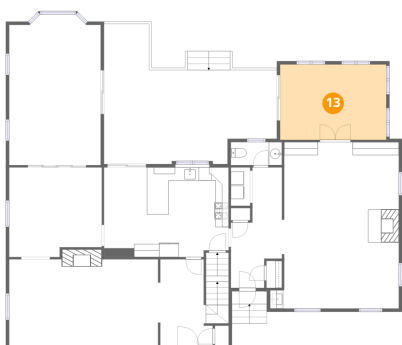
Permitted: Yes

Wet space: No

Addition: No

Conversion: No

## 13 Floor 2 - Office



Dimensions: 16'1" x 11'5"

Area: 184 sq. ft

Counted as living area: Yes

Heated: Yes

Finished: Yes

Enclosed: Yes

Contiguous: Yes

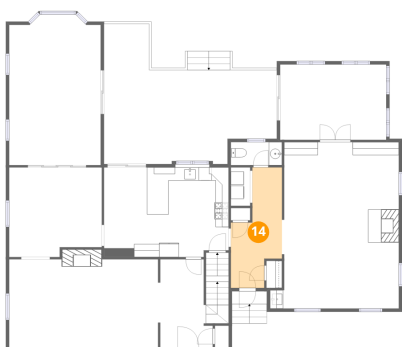
Permitted: Yes

Wet space: No

Addition: No

Conversion: No

## 14 Floor 2 - Entry



Dimensions: 7'9" x 18'3"

Area: 142 sq. ft

Counted as living area: Yes

Heated: Yes

Finished: Yes

Enclosed: Yes

Contiguous: Yes

Permitted: Yes

Wet space: No

Addition: No

Conversion: No

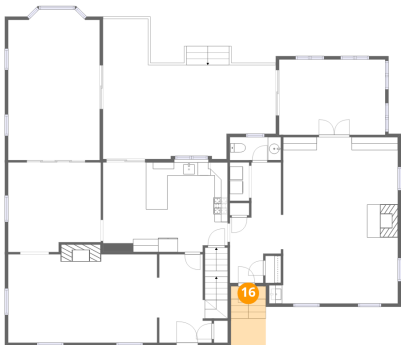
### 15 Floor 2 - Bath



Dimensions: 7'9" x 3'6"  
Area: 27 sq. ft  
Counted as living area: Yes

Heated: Yes  
Finished: Yes  
Enclosed: Yes  
Contiguous: Yes  
Permitted: Yes  
Wet space: Yes  
Addition: No  
Conversion: No

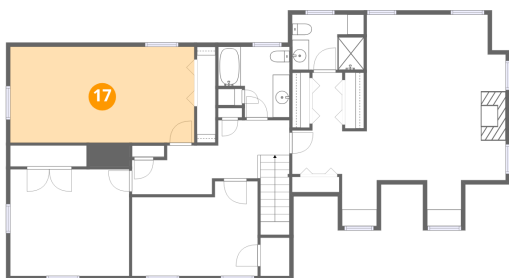
### 16 Floor 2 - Patio



Dimensions: 5'3" x 9'0"  
Area: 47 sq. ft  
Counted as living area: No

Heated: No  
Finished: No  
Enclosed: No  
Contiguous: Yes  
Permitted: Yes  
Wet space: No  
Addition: No  
Conversion: No

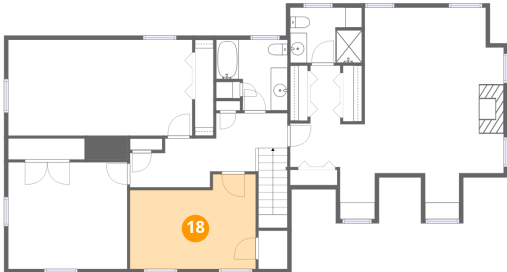
### 17 Floor 3 - Bedroom



Dimensions: 22'0" x 11'5"  
Area: 251 sq. ft  
Counted as living area: Yes

Heated: Yes  
Finished: Yes  
Enclosed: Yes  
Contiguous: Yes  
Permitted: Yes  
Wet space: No  
Addition: No  
Conversion: No

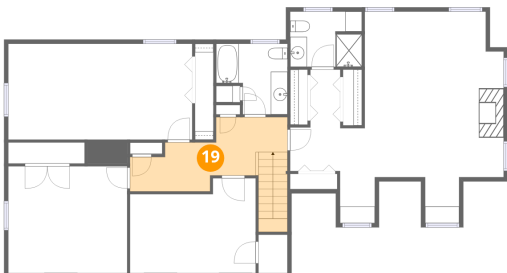
### 18 Floor 3 - Bedroom



Dimensions: 15'0" x 11'4"  
Area: 169 sq. ft  
Counted as living area: Yes

Heated: Yes  
Finished: Yes  
Enclosed: Yes  
Contiguous: Yes  
Permitted: Yes  
Wet space: No  
Addition: No  
Conversion: No

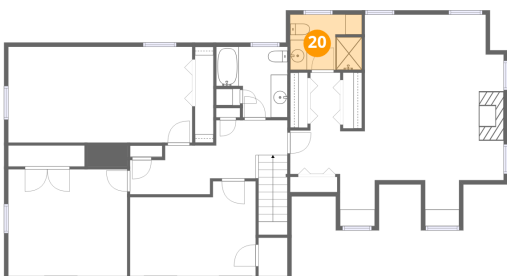
### 19 Floor 3 - Hall



Dimensions: 15'0" x 6'11"  
Area: 104 sq. ft  
Counted as living area: Yes

Heated: Yes  
Finished: Yes  
Enclosed: Yes  
Contiguous: Yes  
Permitted: Yes  
Wet space: No  
Addition: No  
Conversion: No

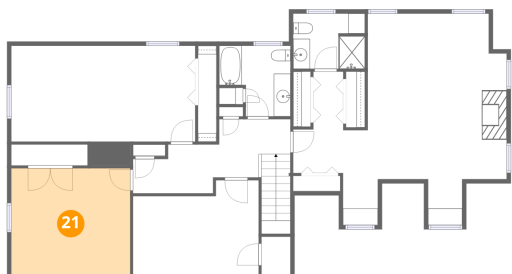
### 20 Floor 3 - Bath



Dimensions: 8'7" x 6'7"  
Area: 56 sq. ft  
Counted as living area: Yes

Heated: Yes  
Finished: Yes  
Enclosed: Yes  
Contiguous: Yes  
Permitted: Yes  
Wet space: Yes  
Addition: No  
Conversion: No

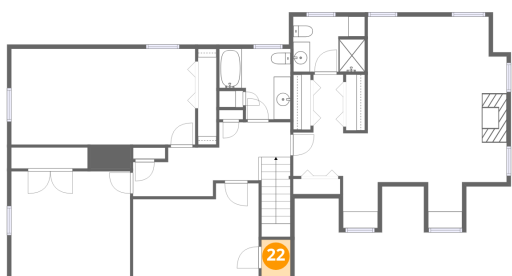
### 21 Floor 3 - Bedroom



Dimensions: 14'2" x 12'9"  
Area: 181 sq. ft  
Counted as living area: Yes

Heated: Yes  
Finished: Yes  
Enclosed: Yes  
Contiguous: Yes  
Permitted: Yes  
Wet space: No  
Addition: No  
Conversion: No

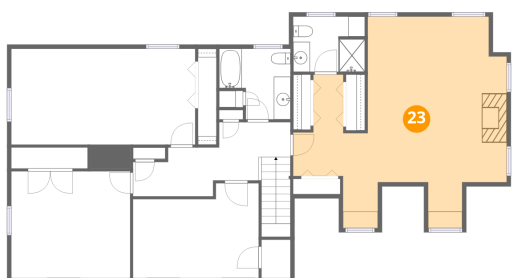
### 22 Floor 3 - W.I.C.



Dimensions: 3'5" x 4'7"  
Area: 16 sq. ft  
Counted as living area: Yes

Heated: Yes  
Finished: Yes  
Enclosed: Yes  
Contiguous: Yes  
Permitted: Yes  
Wet space: No  
Addition: No  
Conversion: No

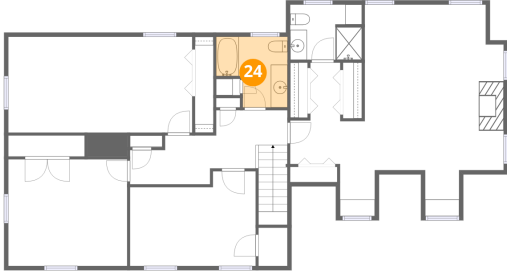
### 23 Floor 3 - Primary Bedroom



Dimensions: 25'6" x 25'3"  
Area: 644 sq. ft  
Counted as living area: Yes

Heated: Yes  
Finished: Yes  
Enclosed: Yes  
Contiguous: Yes  
Permitted: Yes  
Wet space: No  
Addition: No  
Conversion: No

**24** Floor 3 - Bath



Dimensions: 8'6" x 8'5"  
Area: 72 sq. ft  
Counted as living area: Yes

Heated: Yes  
Finished: Yes  
Enclosed: Yes  
Contiguous: Yes  
Permitted: Yes  
Wet space: Yes  
Addition: No  
Conversion: No