



## Total Area: 1307 sq. ft

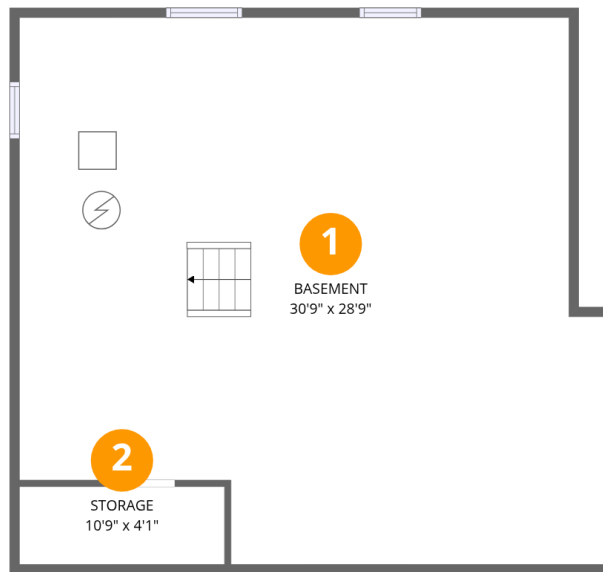
Basement: 0 sq. ft, 1st Floor: 884 sq. ft, 2nd Floor: 423 sq. ft

Excluded: Basement 810 sq. ft, Storage 44 sq. ft, Porch 258 sq. ft, Deck 67 sq. ft, Walls: 176 sq. ft

## Property summary



# 706 Jackson St, Walkerton, IN, US



## Room dimensions

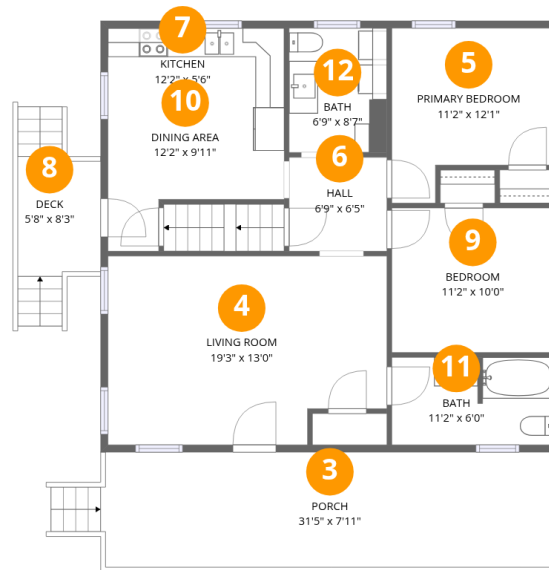
Floor 1 Below grade

Total: 0sqft

Excluded: 854sqft

#		Dimensions	sqft	Counted as living area
1	Basement	30'9" x 28'9"	805 sq. ft	No
2	Storage	10'9" x 4'1"	44 sq. ft	No

# 706 Jackson St, Walkerton, IN, US



## Room dimensions

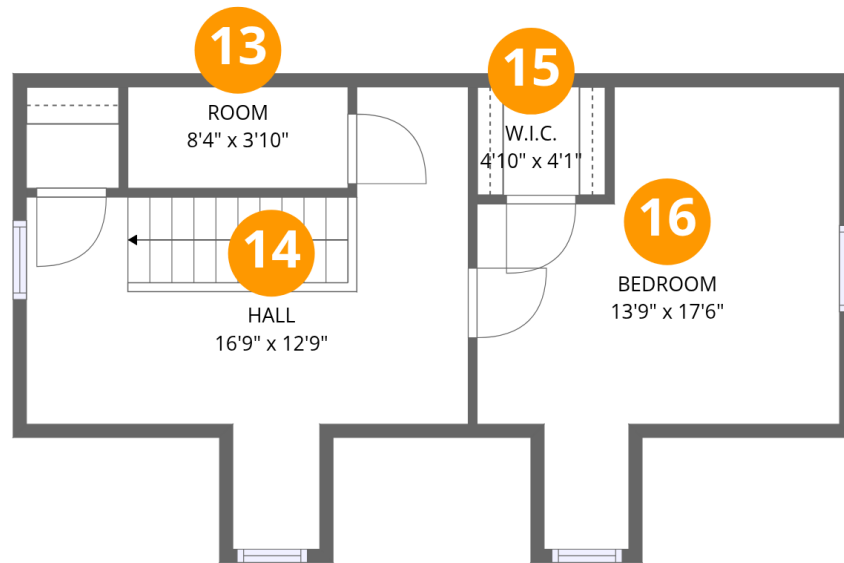
Floor 2

Total: 884 sqft

Excluded: 325 sqft

#		Dimensions	sqft	Counted as living area
3	Porch	31'5" x 7'11"	258 sq. ft	No
4	Living Room	19'3" x 13'0"	237 sq. ft	Yes
5	Primary Bedroom	11'2" x 12'1"	113 sq. ft	Yes
6	Hall	6'9" x 6'5"	44 sq. ft	Yes
7	Kitchen	12'2" x 5'6"	67 sq. ft	Yes
8	Deck	5'8" x 8'3"	67 sq. ft	No
9	Bedroom	11'2" x 10'0"	111 sq. ft	Yes
10	Dining Area	12'2" x 9'11"	90 sq. ft	Yes
11	Bath	11'2" x 6'0"	66 sq. ft	Yes
12	Bath	6'9" x 8'7"	58 sq. ft	Yes

# 706 Jackson St, Walkerton, IN, US



## Room dimensions

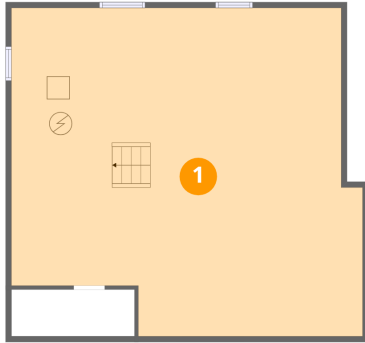
Floor 3

Total:423sqft

Excluded: 0sqft

#		Dimensions	sqft	Counted as living area
13	Room	8'4" x 3'10"	32 sq. ft	Yes
14	Hall	16'9" x 12'9"	177 sq. ft	Yes
15	W.I.C.	4'10" x 4'1"	20 sq. ft	Yes
16	Bedroom	13'9" x 17'6"	167 sq. ft	Yes

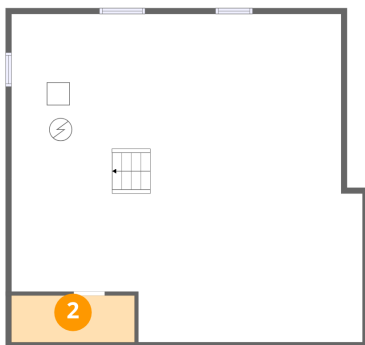
## 1 Floor 1 - Basement



Dimensions: 30'9" x 28'9"  
Area: 805 sq. ft  
Counted as living area: No

Heated: Yes  
Finished: No  
Enclosed: Yes  
Contiguous: Yes  
Permitted: Yes  
Wet space: No  
Addition: No  
Conversion: No

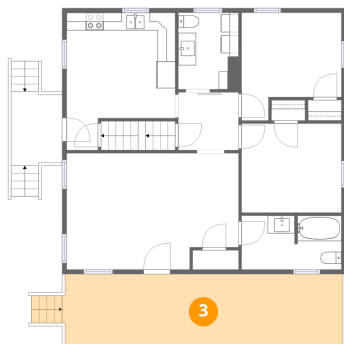
## 2 Floor 1 - Storage



Dimensions: 10'9" x 4'1"  
Area: 44 sq. ft  
Counted as living area: No

Heated: No  
Finished: No  
Enclosed: No  
Contiguous: Yes  
Permitted: Yes  
Wet space: No  
Addition: No  
Conversion: No

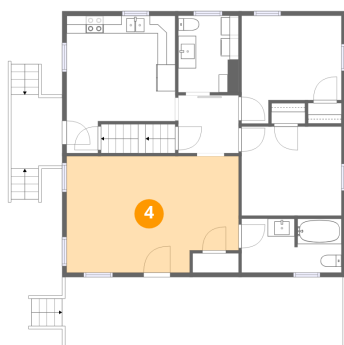
## 3 Floor 2 - Porch



**Dimensions:** 31'5" x 7'11"  
**Area:** 258 sq. ft  
**Counted as living area:** No

**Heated:** No  
**Finished:** No  
**Enclosed:** No  
**Contiguous:** Yes  
**Permitted:** Yes  
**Wet space:** No  
**Addition:** No  
**Conversion:** No

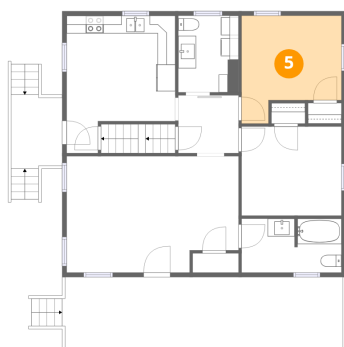
## 4 Floor 2 - Living Room



**Dimensions:** 19'3" x 13'0"  
**Area:** 237 sq. ft  
**Counted as living area:** Yes

**Heated:** Yes  
**Finished:** Yes  
**Enclosed:** Yes  
**Contiguous:** Yes  
**Permitted:** Yes  
**Wet space:** No  
**Addition:** No  
**Conversion:** No

## 5 Floor 2 - Primary Bedroom



**Dimensions:** 11'2" x 12'1"  
**Area:** 113 sq. ft  
**Counted as living area:** Yes

**Heated:** Yes  
**Finished:** Yes  
**Enclosed:** Yes  
**Contiguous:** Yes  
**Permitted:** Yes  
**Wet space:** No  
**Addition:** No  
**Conversion:** No

## 6 Floor 2 - Hall



Dimensions: 6'9" x 6'5"  
Area: 44 sq. ft  
Counted as living area: Yes

Heated: Yes  
Finished: Yes  
Enclosed: Yes  
Contiguous: Yes  
Permitted: Yes  
Wet space: No  
Addition: No  
Conversion: No

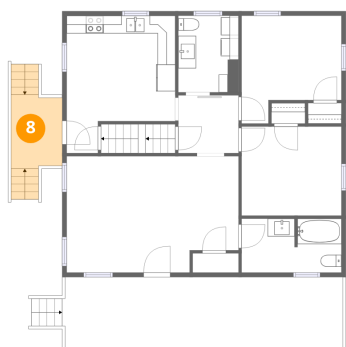
## 7 Floor 2 - Kitchen



Dimensions: 12'2" x 5'6"  
Area: 67 sq. ft  
Counted as living area: Yes

Heated: Yes  
Finished: Yes  
Enclosed: Yes  
Contiguous: Yes  
Permitted: Yes  
Wet space: No  
Addition: No  
Conversion: No

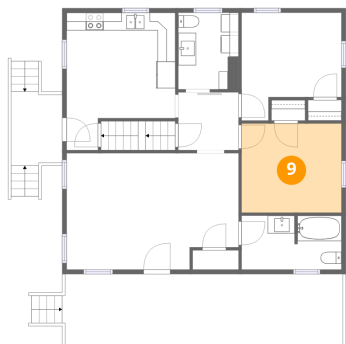
## 8 Floor 2 - Deck



Dimensions: 5'8" x 8'3"  
Area: 67 sq. ft  
Counted as living area: No

Heated: No  
Finished: No  
Enclosed: No  
Contiguous: Yes  
Permitted: Yes  
Wet space: No  
Addition: No  
Conversion: No

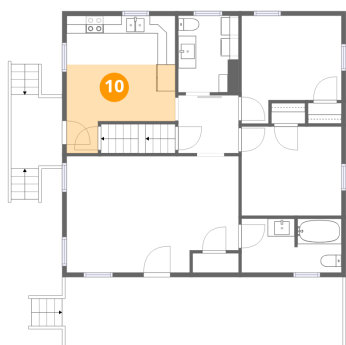
### 9 Floor 2 - Bedroom



Dimensions: 11'2" x 10'0"  
Area: 111 sq. ft  
Counted as living area: Yes

Heated: Yes  
Finished: Yes  
Enclosed: Yes  
Contiguous: Yes  
Permitted: Yes  
Wet space: No  
Addition: No  
Conversion: No

### 10 Floor 2 - Dining Area



Dimensions: 12'2" x 9'11"  
Area: 90 sq. ft  
Counted as living area: Yes

Heated: Yes  
Finished: Yes  
Enclosed: Yes  
Contiguous: Yes  
Permitted: Yes  
Wet space: No  
Addition: No  
Conversion: No

### 11 Floor 2 - Bath



Dimensions: 11'2" x 6'0"  
Area: 66 sq. ft  
Counted as living area: Yes

Heated: Yes  
Finished: Yes  
Enclosed: Yes  
Contiguous: Yes  
Permitted: Yes  
Wet space: Yes  
Addition: No  
Conversion: No

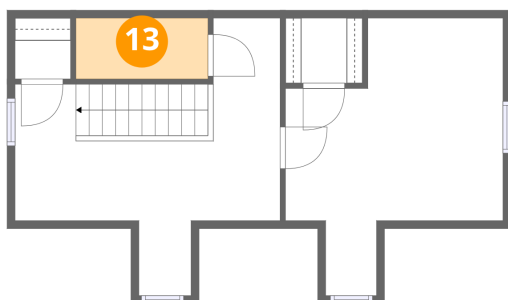
## 12 Floor 2 - Bath



Dimensions: 6'9" x 8'7"  
Area: 58 sq. ft  
Counted as living area: Yes

Heated: Yes  
Finished: Yes  
Enclosed: Yes  
Contiguous: Yes  
Permitted: Yes  
Wet space: No  
Addition: No  
Conversion: No

## 13 Floor 3 - Room



Dimensions: 8'4" x 3'10"  
Area: 32 sq. ft  
Counted as living area: Yes

Heated: Yes  
Finished: Yes  
Enclosed: Yes  
Contiguous: Yes  
Permitted: Yes  
Wet space: No  
Addition: No  
Conversion: No

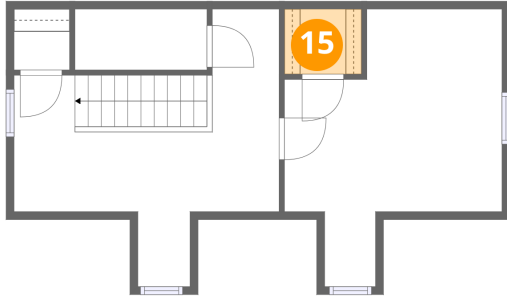
## 14 Floor 3 - Hall



Dimensions: 16'9" x 12'9"  
Area: 177 sq. ft  
Counted as living area: Yes

Heated: Yes  
Finished: Yes  
Enclosed: Yes  
Contiguous: Yes  
Permitted: Yes  
Wet space: No  
Addition: No  
Conversion: No

**15** Floor 3 - W.I.C.



Dimensions: 4'10" x 4'1"  
Area: 20 sq. ft  
Counted as living area: Yes

Heated: Yes  
Finished: Yes  
Enclosed: Yes  
Contiguous: Yes  
Permitted: Yes  
Wet space: No  
Addition: No  
Conversion: No

**16** Floor 3 - Bedroom



Dimensions: 13'9" x 17'6"  
Area: 167 sq. ft  
Counted as living area: Yes

Heated: Yes  
Finished: Yes  
Enclosed: Yes  
Contiguous: Yes  
Permitted: Yes  
Wet space: No  
Addition: No  
Conversion: No