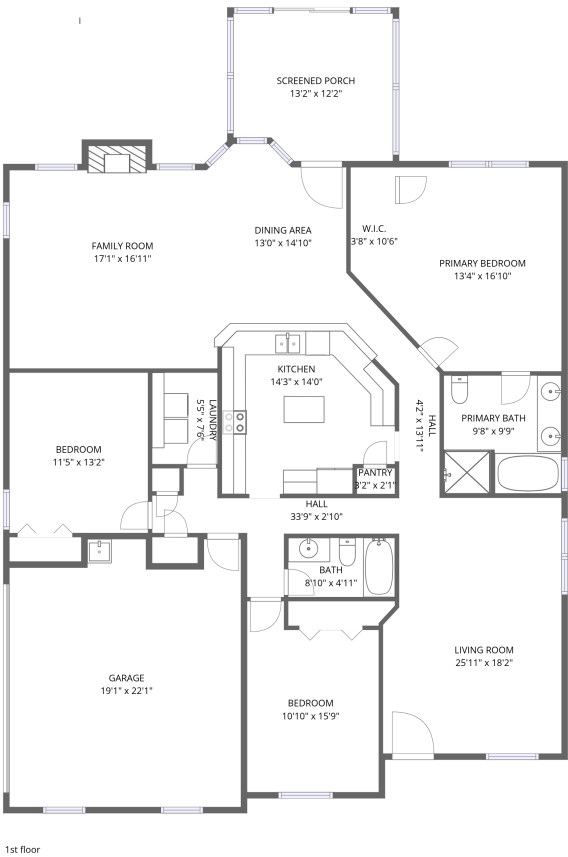


Home data report

136 Garden Brook Drive, Madison, Madison County, Alabama,
United States, 35758




Total Area: 1903 sq. ft

1st Floor: 1903 sq. ft

Excluded: Garage 394 sq. ft, Screened porch 152 sq. ft, Fireplace 12 sq. ft, Walls: 140 sq. ft

Property summary

 1 Floors

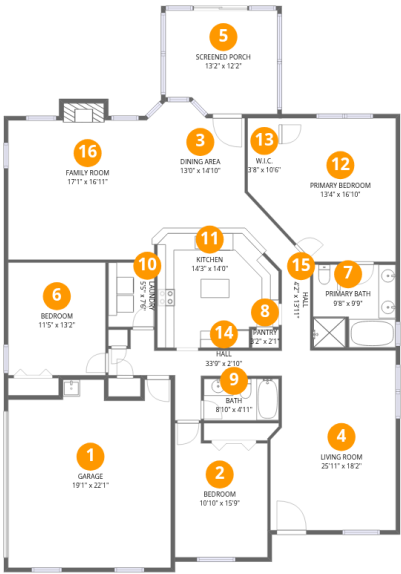
 3 Bedrooms

 2 Bathrooms

 1 Garages

Home data report

136 Garden Brook Drive, Madison, Madison County, Alabama,
United States, 35758



Room dimensions

Floor 1

Total:1903sqft Excluded: 558sqft

#		Dimensions	sqft	Counted as living area
1	Garage	19'1" x 22'1"	394 sq. ft	No
2	Bedroom	10'10" x 15'9"	152 sq. ft	Yes
3	Dining Area	13'0" x 14'10"	155 sq. ft	Yes
4	Living Room	25'11" x 18'2"	275 sq. ft	Yes
5	Screened Porch	13'2" x 12'2"	152 sq. ft	No
6	Bedroom	11'5" x 13'2"	151 sq. ft	Yes
7	Primary Bath	9'8" x 9'9"	93 sq. ft	Yes
8	Pantry	3'2" x 2'1"	7 sq. ft	Yes
9	Bath	8'10" x 4'11"	43 sq. ft	Yes
10	Laundry	5'5" x 7'6"	41 sq. ft	Yes
11	Kitchen	14'3" x 14'0"	183 sq. ft	Yes

Home data report

**136 Garden Brook Drive, Madison, Madison County, Alabama,
United States, 35758**

#		Dimensions	sqft	Counted as living area
12	Primary Bedroom	13'4" x 16'10"	218 sq. ft	Yes
13	W.I.C.	3'8" x 10'6"	39 sq. ft	Yes
14	Hall	33'9" x 2'10"	105 sq. ft	Yes
15	Hall	4'2" x 13'11"	55 sq. ft	Yes
16	Family Room	17'1" x 16'11"	286 sq. ft	Yes

136 Garden Brook Drive, Madison, Madison County, Alabama,
United States, 35758

1 Floor 1 - Garage



Dimensions: 19'1" x 22'1"
Area: 394 sq. ft
Counted as living area: No

Heated: No
Finished: No
Enclosed: Yes
Contiguous: Yes
Permitted: Yes
Wet space: No
Addition: No
Conversion: No

2 Floor 1 - Bedroom

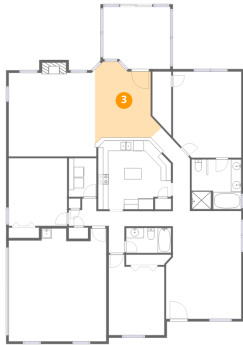


Dimensions: 10'10" x 15'9"
Area: 152 sq. ft
Counted as living area: Yes

Heated: Yes
Finished: Yes
Enclosed: Yes
Contiguous: Yes
Permitted: Yes
Wet space: No
Addition: No
Conversion: No

136 Garden Brook Drive, Madison, Madison County, Alabama,
United States, 35758

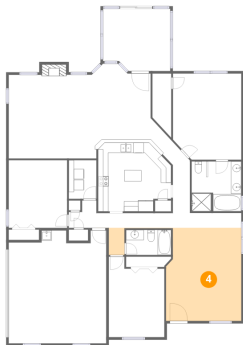
3 Floor 1 - Dining Area



Dimensions: 13'0" x 14'10"
Area: 155 sq. ft
Counted as living area: Yes

Heated: Yes
Finished: Yes
Enclosed: Yes
Contiguous: Yes
Permitted: Yes
Wet space: No
Addition: No
Conversion: No

4 Floor 1 - Living Room



Dimensions: 25'11" x 18'2"
Area: 275 sq. ft
Counted as living area: Yes

Heated: Yes
Finished: Yes
Enclosed: Yes
Contiguous: Yes
Permitted: Yes
Wet space: No
Addition: No
Conversion: No

5 Floor 1 - Screened Porch

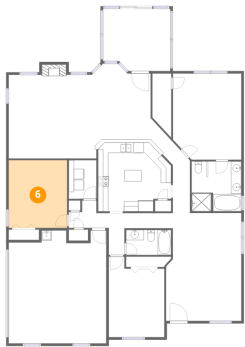


Dimensions: 13'2" x 12'2"
Area: 152 sq. ft
Counted as living area: No

Heated: No
Finished: No
Enclosed: No
Contiguous: Yes
Permitted: Yes
Wet space: No
Addition: No
Conversion: No

136 Garden Brook Drive, Madison, Madison County, Alabama,
United States, 35758

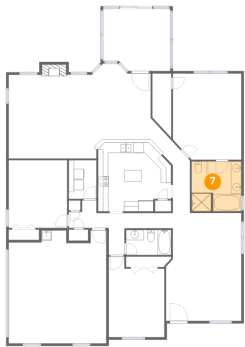
6 Floor 1 - Bedroom



Dimensions: 11'5" x 13'2"
Area: 151 sq. ft
Counted as living area: Yes

Heated: Yes
Finished: Yes
Enclosed: Yes
Contiguous: Yes
Permitted: Yes
Wet space: No
Addition: No
Conversion: No

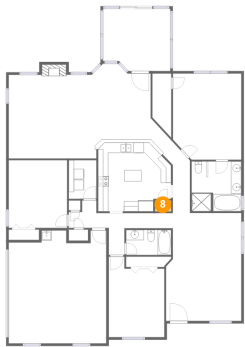
7 Floor 1 - Primary Bath



Dimensions: 9'8" x 9'9"
Area: 93 sq. ft
Counted as living area: Yes

Heated: Yes
Finished: Yes
Enclosed: Yes
Contiguous: Yes
Permitted: Yes
Wet space: Yes
Addition: No
Conversion: No

8 Floor 1 - Pantry

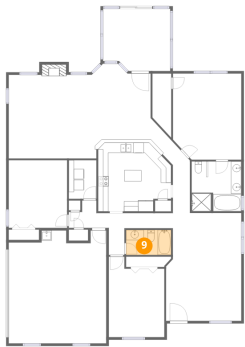


Dimensions: 3'2" x 2'1"
Area: 7 sq. ft
Counted as living area: Yes

Heated: Yes
Finished: Yes
Enclosed: Yes
Contiguous: Yes
Permitted: Yes
Wet space: No
Addition: No
Conversion: No

136 Garden Brook Drive, Madison, Madison County, Alabama,
United States, 35758

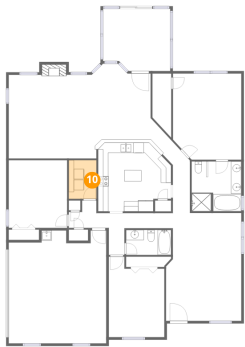
9 Floor 1 - Bath



Dimensions: 8'10" x 4'11"
Area: 43 sq. ft
Counted as living area: Yes

Heated: Yes
Finished: Yes
Enclosed: Yes
Contiguous: Yes
Permitted: Yes
Wet space: Yes
Addition: No
Conversion: No

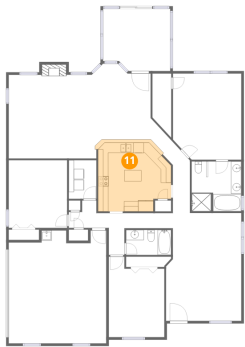
10 Floor 1 - Laundry



Dimensions: 5'5" x 7'6"
Area: 41 sq. ft
Counted as living area: Yes

Heated: Yes
Finished: Yes
Enclosed: Yes
Contiguous: Yes
Permitted: Yes
Wet space: No
Addition: No
Conversion: No

11 Floor 1 - Kitchen

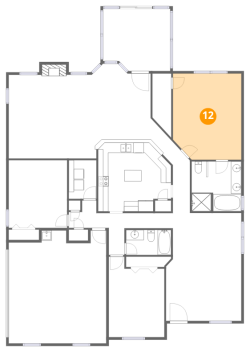


Dimensions: 14'3" x 14'0"
Area: 183 sq. ft
Counted as living area: Yes

Heated: Yes
Finished: Yes
Enclosed: Yes
Contiguous: Yes
Permitted: Yes
Wet space: No
Addition: No
Conversion: No

136 Garden Brook Drive, Madison, Madison County, Alabama,
United States, 35758

12 Floor 1 - Primary Bedroom



Dimensions: 13'4" x 16'10"
Area: 218 sq. ft
Counted as living area: Yes

Heated: Yes
Finished: Yes
Enclosed: Yes
Contiguous: Yes
Permitted: Yes
Wet space: No
Addition: No
Conversion: No

13 Floor 1 - W.I.C.



Dimensions: 3'8" x 10'6"
Area: 39 sq. ft
Counted as living area: Yes

Heated: Yes
Finished: Yes
Enclosed: Yes
Contiguous: Yes
Permitted: Yes
Wet space: No
Addition: No
Conversion: No

14 Floor 1 - Hall

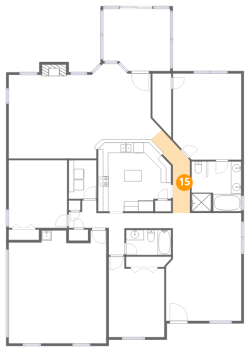


Dimensions: 33'9" x 2'10"
Area: 105 sq. ft
Counted as living area: Yes

Heated: Yes
Finished: Yes
Enclosed: Yes
Contiguous: Yes
Permitted: Yes
Wet space: No
Addition: No
Conversion: No

136 Garden Brook Drive, Madison, Madison County, Alabama,
United States, 35758

15 Floor 1 - Hall



Dimensions: 4'2" x 13'11"
Area: 55 sq. ft
Counted as living area: Yes

Heated: Yes
Finished: Yes
Enclosed: Yes
Contiguous: Yes
Permitted: Yes
Wet space: No
Addition: No
Conversion: No

16 Floor 1 - Family Room



Dimensions: 17'1" x 16'11"
Area: 286 sq. ft
Counted as living area: Yes

Heated: Yes
Finished: Yes
Enclosed: Yes
Contiguous: Yes
Permitted: Yes
Wet space: No
Addition: No
Conversion: No