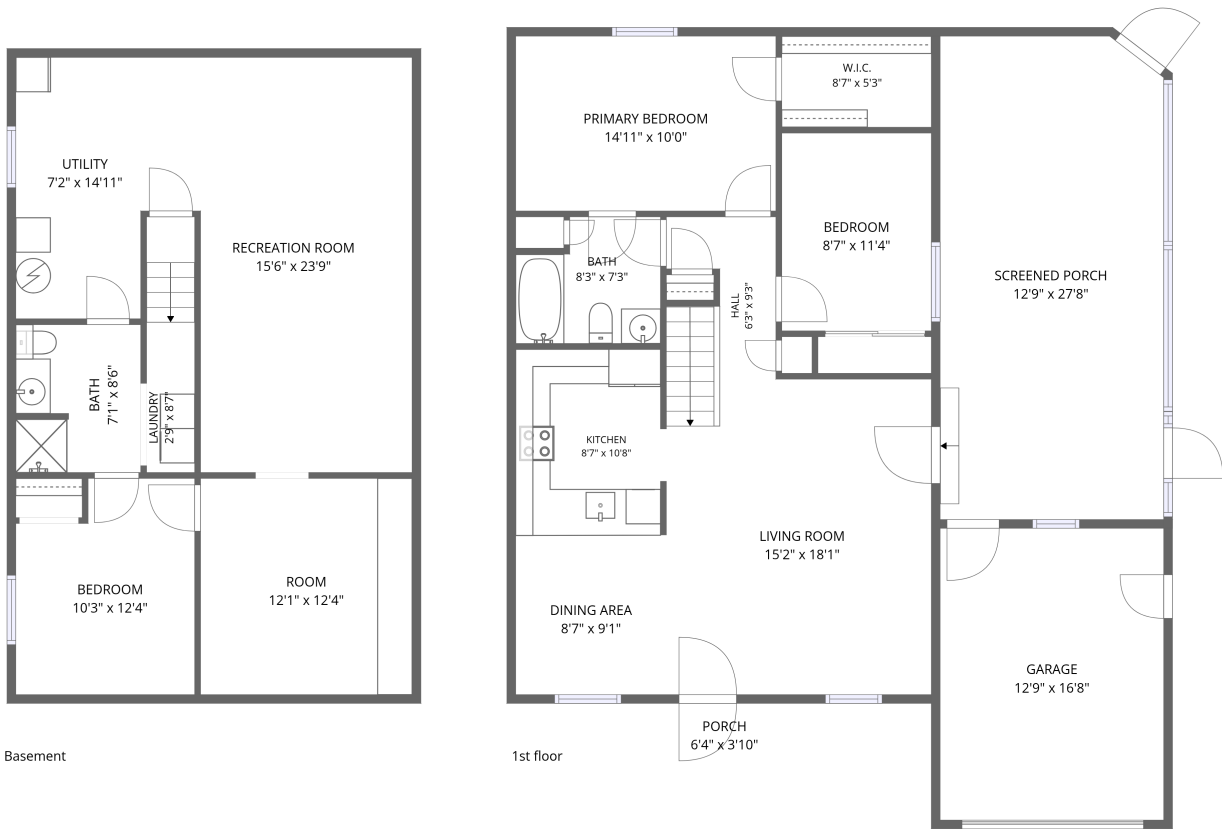


# Home data report

## 4313 Widgeon St, Fort Collins, CO, US




**Total Area: 1297 sq. ft**

Basement: 402 sq. ft, 1st Floor: 895 sq. ft

Excluded: Recreation room 317 sq. ft, Utility 107 sq. ft, Garage 213 sq. ft, Screened porch 350 sq. ft, Porch 24 sq. ft, Walls: 168 sq. ft

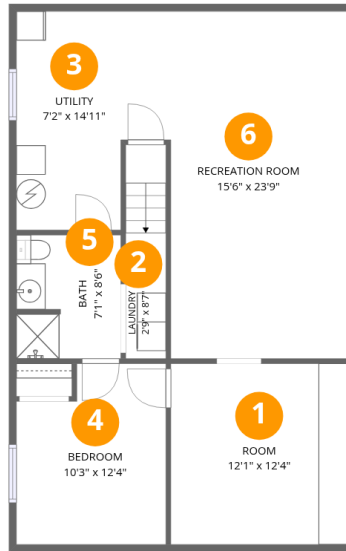
### Property summary

 **2** Floors

 **3** Bedrooms

 **2** Bathrooms

 **1** Garages



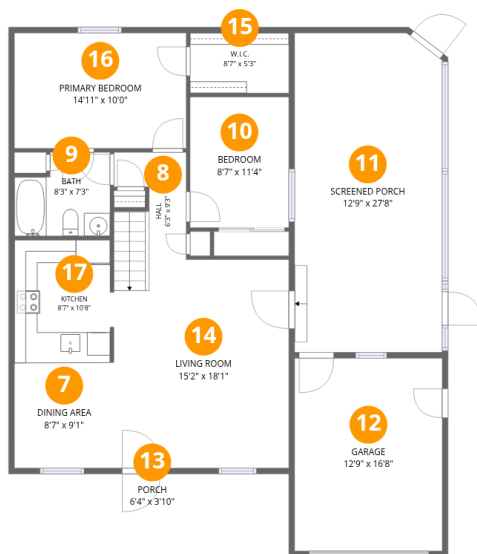
## Room dimensions

Floor 1 Below grade

Total: 402 sqft

Excluded: 424 sqft

#		Dimensions	sqft	Counted as living area
1	Room	12'1" x 12'4"	150 sq. ft	Yes
2	Laundry	2'9" x 8'7"	40 sq. ft	Yes
3	Utility	7'2" x 14'11"	107 sq. ft	No
4	Bedroom	10'3" x 12'4"	116 sq. ft	Yes
5	Bath	7'1" x 8'6"	59 sq. ft	Yes
6	Recreation Room	15'6" x 23'9"	317 sq. ft	No



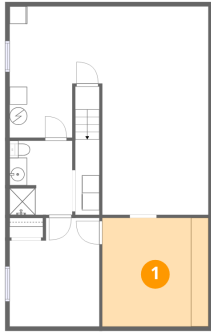
## Room dimensions

Floor 2

Total: 895 sqft Excluded: 587 sqft

#		Dimensions	sqft	Counted as living area
7	Dining Area	8'7" x 9'1"	78 sq. ft	Yes
8	Hall	6'3" x 9'3"	52 sq. ft	Yes
9	Bath	8'3" x 7'3"	53 sq. ft	Yes
10	Bedroom	8'7" x 11'4"	97 sq. ft	Yes
11	Screened Porch	12'9" x 27'8"	350 sq. ft	No
12	Garage	12'9" x 16'8"	213 sq. ft	No
13	Porch	6'4" x 3'10"	24 sq. ft	No
14	Living Room	15'2" x 18'1"	273 sq. ft	Yes
15	W.I.C.	8'7" x 5'3"	45 sq. ft	Yes
16	Primary Bedroom	14'11" x 10'0"	149 sq. ft	Yes
17	Kitchen	8'7" x 10'8"	90 sq. ft	Yes

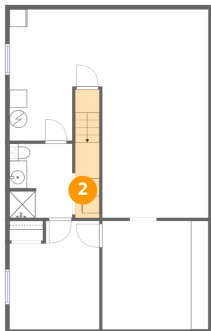
## 1 Floor 1 - Room



Dimensions: 12'1" x 12'4"  
Area: 150 sq. ft  
Counted as living area: Yes

Heated: Yes  
Finished: Yes  
Enclosed: Yes  
Contiguous: Yes  
Permitted: Yes  
Wet space: No  
Addition: No  
Conversion: No

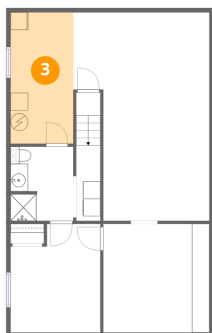
## 2 Floor 1 - Laundry



Dimensions: 2'9" x 8'7"  
Area: 40 sq. ft  
Counted as living area: Yes

Heated: Yes  
Finished: Yes  
Enclosed: Yes  
Contiguous: Yes  
Permitted: Yes  
Wet space: No  
Addition: No  
Conversion: No

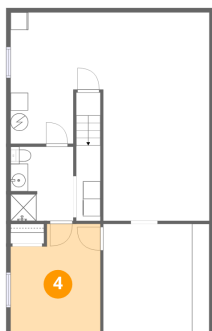
### 3 Floor 1 - Utility



Dimensions: 7'2" x 14'11"  
Area: 107 sq. ft  
Counted as living area: No

Heated: Yes  
Finished: No  
Enclosed: Yes  
Contiguous: Yes  
Permitted: Yes  
Wet space: No  
Addition: No  
Conversion: No

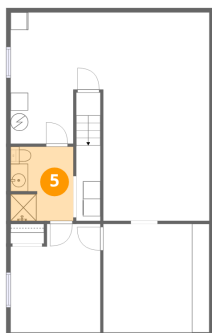
### 4 Floor 1 - Bedroom



Dimensions: 10'3" x 12'4"  
Area: 116 sq. ft  
Counted as living area: Yes

Heated: Yes  
Finished: Yes  
Enclosed: Yes  
Contiguous: Yes  
Permitted: Yes  
Wet space: No  
Addition: No  
Conversion: No

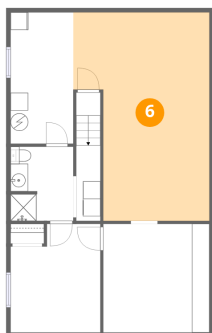
### 5 Floor 1 - Bath



Dimensions: 7'1" x 8'6"  
Area: 59 sq. ft  
Counted as living area: Yes

Heated: Yes  
Finished: Yes  
Enclosed: Yes  
Contiguous: Yes  
Permitted: Yes  
Wet space: Yes  
Addition: No  
Conversion: No

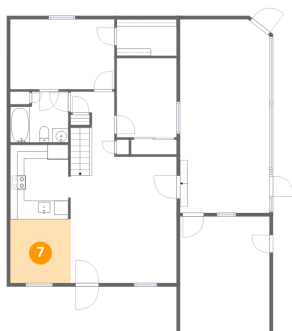
## 6 Floor 1 - Recreation Room



Dimensions: 15'6" x 23'9"  
Area: 317 sq. ft  
Counted as living area: No

Heated: Yes  
Finished: No  
Enclosed: Yes  
Contiguous: Yes  
Permitted: Yes  
Wet space: No  
Addition: No  
Conversion: No

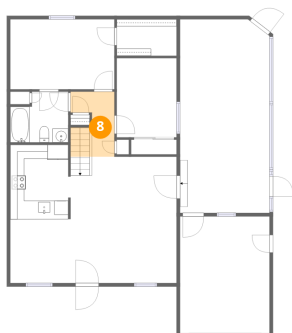
## 7 Floor 2 - Dining Area



Dimensions: 8'7" x 9'1"  
Area: 78 sq. ft  
Counted as living area: Yes

Heated: Yes  
Finished: Yes  
Enclosed: Yes  
Contiguous: Yes  
Permitted: Yes  
Wet space: No  
Addition: No  
Conversion: No

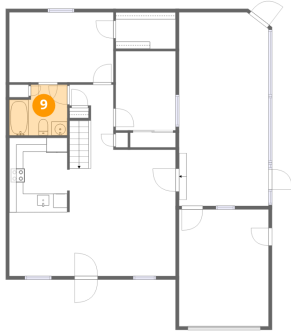
## 8 Floor 2 - Hall



Dimensions: 6'3" x 9'3"  
Area: 52 sq. ft  
Counted as living area: Yes

Heated: Yes  
Finished: Yes  
Enclosed: Yes  
Contiguous: Yes  
Permitted: Yes  
Wet space: No  
Addition: No  
Conversion: No

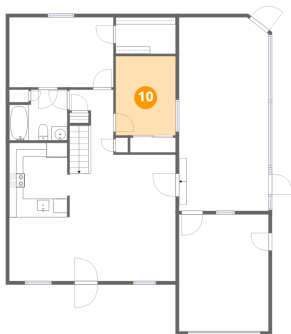
### 9 Floor 2 - Bath



Dimensions: 8'3" x 7'3"  
Area: 53 sq. ft  
Counted as living area: Yes

Heated: Yes  
Finished: Yes  
Enclosed: Yes  
Contiguous: Yes  
Permitted: Yes  
Wet space: Yes  
Addition: No  
Conversion: No

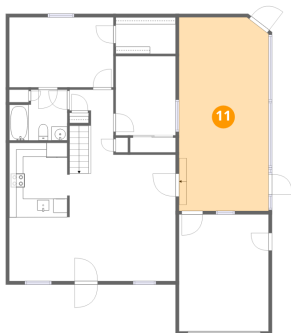
### 10 Floor 2 - Bedroom



Dimensions: 8'7" x 11'4"  
Area: 97 sq. ft  
Counted as living area: Yes

Heated: Yes  
Finished: Yes  
Enclosed: Yes  
Contiguous: Yes  
Permitted: Yes  
Wet space: No  
Addition: No  
Conversion: No

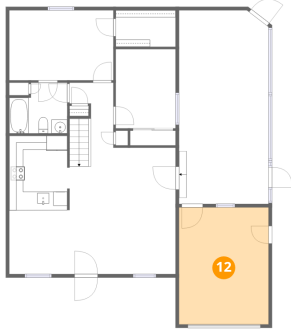
### 11 Floor 2 - Screened Porch



Dimensions: 12'9" x 27'8"  
Area: 350 sq. ft  
Counted as living area: No

Heated: No  
Finished: No  
Enclosed: No  
Contiguous: Yes  
Permitted: Yes  
Wet space: No  
Addition: No  
Conversion: No

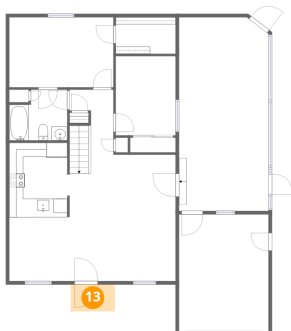
## 12 Floor 2 - Garage



Dimensions: 12'9" x 16'8"  
Area: 213 sq. ft  
Counted as living area: No

Heated: No  
Finished: No  
Enclosed: Yes  
Contiguous: Yes  
Permitted: Yes  
Wet space: No  
Addition: No  
Conversion: No

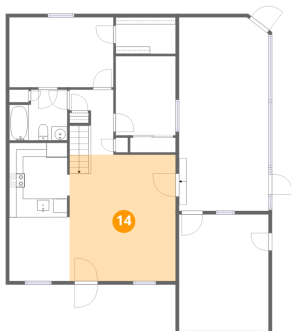
## 13 Floor 2 - Porch



Dimensions: 6'4" x 3'10"  
Area: 24 sq. ft  
Counted as living area: No

Heated: No  
Finished: No  
Enclosed: No  
Contiguous: Yes  
Permitted: Yes  
Wet space: No  
Addition: No  
Conversion: No

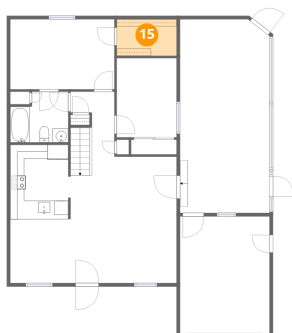
## 14 Floor 2 - Living Room



Dimensions: 15'2" x 18'1"  
Area: 273 sq. ft  
Counted as living area: Yes

Heated: Yes  
Finished: Yes  
Enclosed: Yes  
Contiguous: Yes  
Permitted: Yes  
Wet space: No  
Addition: No  
Conversion: No

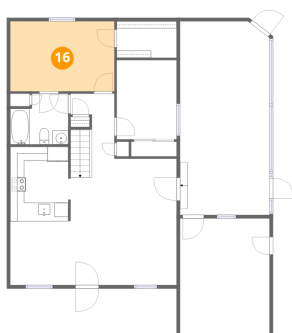
**15** Floor 2 - W.I.C.



Dimensions: 8'7" x 5'3"  
Area: 45 sq. ft  
Counted as living area: Yes

Heated: Yes  
Finished: Yes  
Enclosed: Yes  
Contiguous: Yes  
Permitted: Yes  
Wet space: No  
Addition: No  
Conversion: No

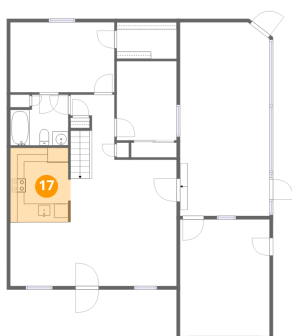
**16** Floor 2 - Primary Bedroom



Dimensions: 14'11" x 10'0"  
Area: 149 sq. ft  
Counted as living area: Yes

Heated: Yes  
Finished: Yes  
Enclosed: Yes  
Contiguous: Yes  
Permitted: Yes  
Wet space: No  
Addition: No  
Conversion: No

**17** Floor 2 - Kitchen



Dimensions: 8'7" x 10'8"  
Area: 90 sq. ft  
Counted as living area: Yes

Heated: Yes  
Finished: Yes  
Enclosed: Yes  
Contiguous: Yes  
Permitted: Yes  
Wet space: No  
Addition: No  
Conversion: No