

Home data report

11201 Wyandot Street, Westminster, Colorado 80234, United States



Total Area: 1990 sq. ft

1st Floor: 858 sq. ft, 2nd Floor: 1132 sq. ft

Excluded: Storage 242 sq. ft, Embedded window 5 sq. ft, Fireplace 8 sq. ft, Walls: 134 sq. ft

Property summary

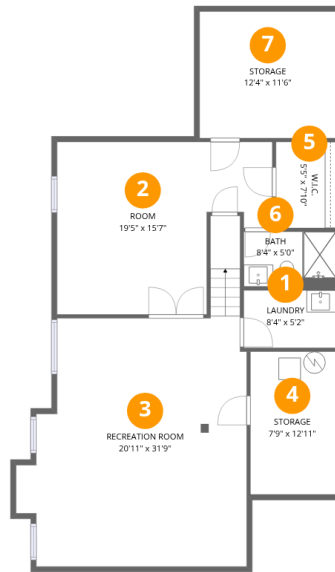
 **2** Floors

 **2** Bedrooms

 **3** Bathrooms

Home data report

11201 Wyandot Street, Westminster, Colorado 80234, United States



Room dimensions

Floor 1

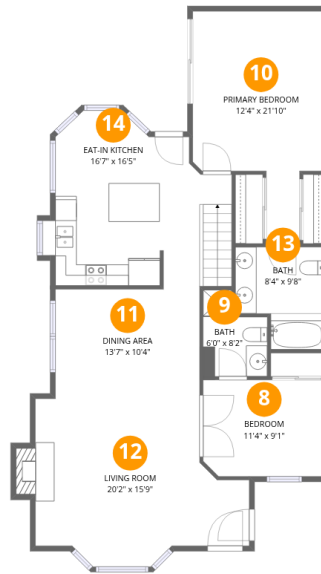
Total:858sqft

Excluded: 242sqft

#		Dimensions	sqft	Counted as living area
1	Laundry	8'4" x 5'2"	44 sq. ft	Yes
2	Room	19'5" x 15'7"	254 sq. ft	Yes
3	Recreation Room	20'11" x 31'9"	444 sq. ft	Yes
4	Storage	7'9" x 12'11"	100 sq. ft	No
5	W.I.C.	5'5" x 7'10"	42 sq. ft	Yes
6	Bath	8'4" x 5'0"	42 sq. ft	Yes
7	Storage	12'4" x 11'6"	142 sq. ft	No

Home data report

11201 Wyandot Street, Westminster, Colorado 80234, United States



Room dimensions

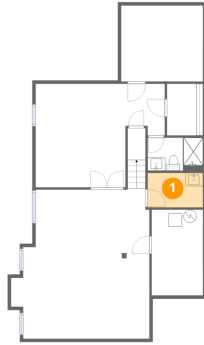
Floor 2

Total:1132sqft Excluded: 13sqft

#		Dimensions	sqft	Counted as living area
8	Bedroom	11'4" x 9'1"	102 sq. ft	Yes
9	Bath	6'0" x 8'2"	41 sq. ft	Yes
10	Primary Bedroom	12'4" x 21'10"	207 sq. ft	Yes
11	Dining Area	13'7" x 10'4"	140 sq. ft	Yes
12	Living Room	20'2" x 15'9"	267 sq. ft	Yes
13	Bath	8'4" x 9'8"	69 sq. ft	Yes
14	Eat-in Kitchen	16'7" x 16'5"	234 sq. ft	Yes

11201 Wyandot Street, Westminster, Colorado 80234, United States

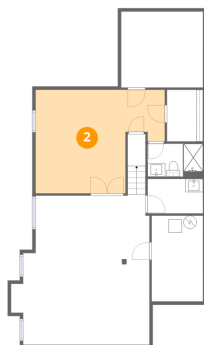
1 Floor 1 - Laundry



Dimensions: 8'4" x 5'2"
Area: 44 sq. ft
Counted as living area: Yes

Heated: Yes
Finished: Yes
Enclosed: Yes
Contiguous: Yes
Permitted: Yes
Wet space: No
Addition: No
Conversion: No

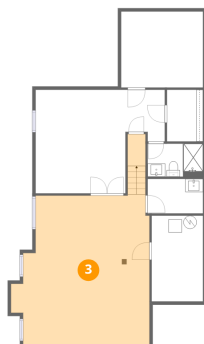
2 Floor 1 - Room



Dimensions: 19'5" x 15'7"
Area: 254 sq. ft
Counted as living area: Yes

Heated: Yes
Finished: Yes
Enclosed: Yes
Contiguous: Yes
Permitted: Yes
Wet space: No
Addition: No
Conversion: No

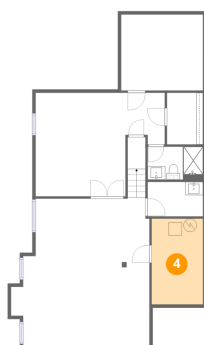
3 Floor 1 - Recreation Room



Dimensions: 20'11" x 31'9"
Area: 444 sq. ft
Counted as living area: Yes

Heated: Yes
Finished: Yes
Enclosed: Yes
Contiguous: Yes
Permitted: Yes
Wet space: No
Addition: No
Conversion: No

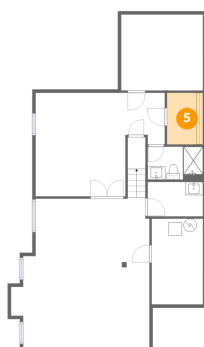
4 Floor 1 - Storage



Dimensions: 7'9" x 12'11"
Area: 100 sq. ft
Counted as living area: No

Heated: No
Finished: No
Enclosed: No
Contiguous: Yes
Permitted: Yes
Wet space: No
Addition: No
Conversion: No

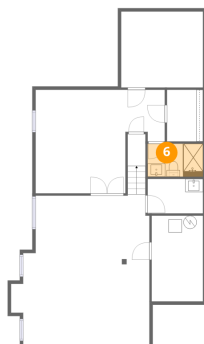
5 Floor 1 - W.I.C.



Dimensions: 5'5" x 7'10"
Area: 42 sq. ft
Counted as living area: Yes

Heated: Yes
Finished: Yes
Enclosed: Yes
Contiguous: Yes
Permitted: Yes
Wet space: No
Addition: No
Conversion: No

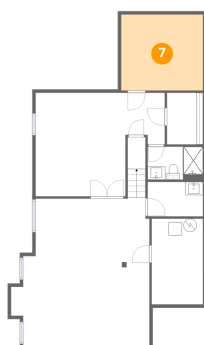
6 Floor 1 - Bath



Dimensions: 8'4" x 5'0"
Area: 42 sq. ft
Counted as living area: Yes

Heated: Yes
Finished: Yes
Enclosed: Yes
Contiguous: Yes
Permitted: Yes
Wet space: Yes
Addition: No
Conversion: No

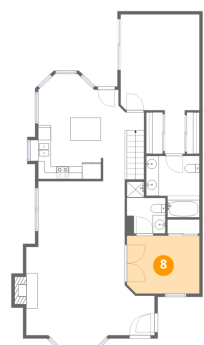
7 Floor 1 - Storage



Dimensions: 12'4" x 11'6"
Area: 142 sq. ft
Counted as living area: No

Heated: No
Finished: No
Enclosed: No
Contiguous: Yes
Permitted: Yes
Wet space: No
Addition: No
Conversion: No

8 Floor 2 - Bedroom



Dimensions: 11'4" x 9'1"
Area: 102 sq. ft
Counted as living area: Yes

Heated: Yes
Finished: Yes
Enclosed: Yes
Contiguous: Yes
Permitted: Yes
Wet space: No
Addition: No
Conversion: No

9 Floor 2 - Bath



Dimensions: 6'0" x 8'2"
Area: 41 sq. ft
Counted as living area: Yes

Heated: Yes
Finished: Yes
Enclosed: Yes
Contiguous: Yes
Permitted: Yes
Wet space: Yes
Addition: No
Conversion: No

10 Floor 2 - Primary Bedroom



Dimensions: 12'4" x 21'10"
Area: 207 sq. ft
Counted as living area: Yes

Heated: Yes
Finished: Yes
Enclosed: Yes
Contiguous: Yes
Permitted: Yes
Wet space: No
Addition: No
Conversion: No

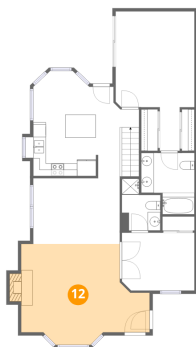
11 Floor 2 - Dining Area



Dimensions: 13'7" x 10'4"
Area: 140 sq. ft
Counted as living area: Yes

Heated: Yes
Finished: Yes
Enclosed: Yes
Contiguous: Yes
Permitted: Yes
Wet space: No
Addition: No
Conversion: No

12 Floor 2 - Living Room



Dimensions: 20'2" x 15'9"
Area: 267 sq. ft
Counted as living area: Yes

Heated: Yes
Finished: Yes
Enclosed: Yes
Contiguous: Yes
Permitted: Yes
Wet space: No
Addition: No
Conversion: No

13 Floor 2 - Bath



Dimensions: 8'4" x 9'8"
Area: 69 sq. ft
Counted as living area: Yes

Heated: Yes
Finished: Yes
Enclosed: Yes
Contiguous: Yes
Permitted: Yes
Wet space: Yes
Addition: No
Conversion: No

14 Floor 2 - Eat-in Kitchen



Dimensions: 16'7" x 16'5"
Area: 234 sq. ft
Counted as living area: Yes

Heated: Yes
Finished: Yes
Enclosed: Yes
Contiguous: Yes
Permitted: Yes
Wet space: No
Addition: No
Conversion: No