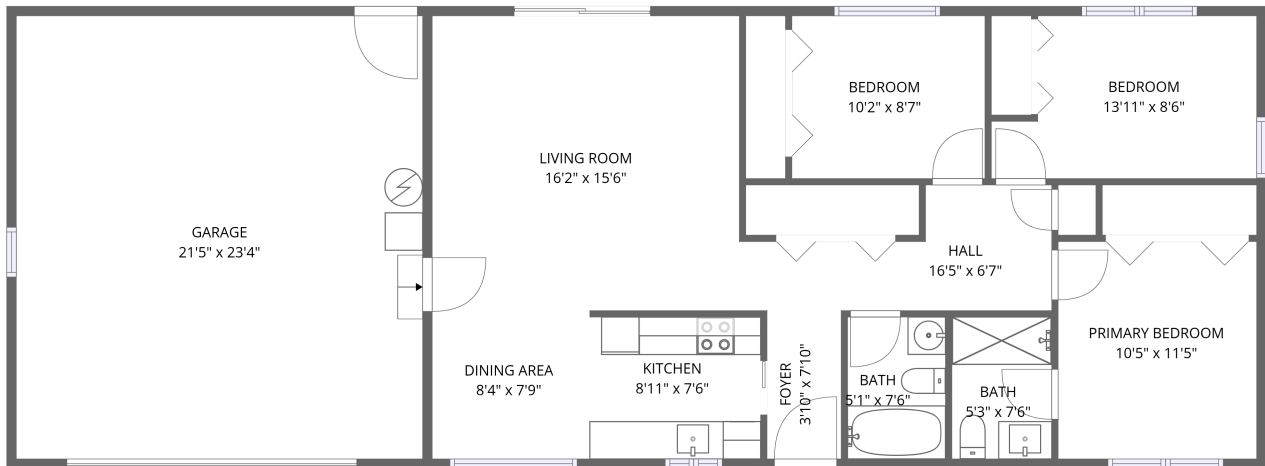


Home data report

1809 w. Malad Ln, Boise, ID, US



1st floor

Total Area: 1012 sq. ft

1st Floor: 1012 sq. ft

Excluded: Garage 499 sq. ft, Walls: 101 sq. ft

Property summary

 **1** Floors

 **3** Bedrooms

 **2** Bathrooms

 **1** Garages



Room dimensions

Floor 1

Total: 1012sqft Excluded: 499sqft

| # | | Dimensions | sqft | Counted as living area |
|----|-----------------|---------------|------------|------------------------|
| 1 | Garage | 21'5" x 23'4" | 499 sq. ft | No |
| 2 | Foyer | 3'10" x 7'10" | 31 sq. ft | Yes |
| 3 | Hall | 16'5" x 6'7" | 81 sq. ft | Yes |
| 4 | Kitchen | 8'11" x 7'6" | 67 sq. ft | Yes |
| 5 | Bath | 5'3" x 7'6" | 39 sq. ft | Yes |
| 6 | Living Room | 16'2" x 15'6" | 251 sq. ft | Yes |
| 7 | Primary Bedroom | 10'5" x 11'5" | 120 sq. ft | Yes |
| 8 | Bedroom | 13'11" x 8'6" | 106 sq. ft | Yes |
| 9 | Bath | 5'1" x 7'6" | 39 sq. ft | Yes |
| 10 | Bedroom | 10'2" x 8'7" | 87 sq. ft | Yes |
| 11 | Dining Area | 8'4" x 7'9" | 65 sq. ft | Yes |

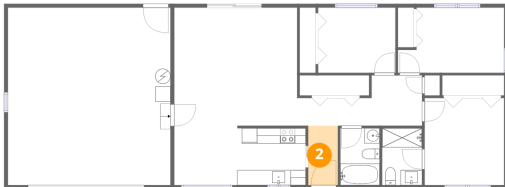
1 Floor 1 - Garage



Dimensions: 21'5" x 23'4"
Area: 499 sq. ft
Counted as living area: No

Heated: No
Finished: No
Enclosed: Yes
Contiguous: Yes
Permitted: Yes
Wet space: No
Addition: No
Conversion: No

2 Floor 1 - Foyer



Dimensions: 3'10" x 7'10"
Area: 31 sq. ft
Counted as living area: Yes

Heated: Yes
Finished: Yes
Enclosed: Yes
Contiguous: Yes
Permitted: Yes
Wet space: No
Addition: No
Conversion: No

3 Floor 1 - Hall



Dimensions: 16'5" x 6'7"
Area: 81 sq. ft
Counted as living area: Yes

Heated: Yes
Finished: Yes
Enclosed: Yes
Contiguous: Yes
Permitted: Yes
Wet space: No
Addition: No
Conversion: No

4 Floor 1 - Kitchen



Dimensions: 8'11" x 7'6"
Area: 67 sq. ft
Counted as living area: Yes

Heated: Yes
Finished: Yes
Enclosed: Yes
Contiguous: Yes
Permitted: Yes
Wet space: No
Addition: No
Conversion: No

5 Floor 1 - Bath



Dimensions: 5'3" x 7'6"
Area: 39 sq. ft
Counted as living area: Yes

Heated: Yes
Finished: Yes
Enclosed: Yes
Contiguous: Yes
Permitted: Yes
Wet space: Yes
Addition: No
Conversion: No

6 Floor 1 - Living Room



Dimensions: 16'2" x 15'6"
Area: 251 sq. ft
Counted as living area: Yes

Heated: Yes
Finished: Yes
Enclosed: Yes
Contiguous: Yes
Permitted: Yes
Wet space: No
Addition: No
Conversion: No

7 Floor 1 - Primary Bedroom



Dimensions: 10'5" x 11'5"
Area: 120 sq. ft
Counted as living area: Yes

Heated: Yes
Finished: Yes
Enclosed: Yes
Contiguous: Yes
Permitted: Yes
Wet space: No
Addition: No
Conversion: No

8 Floor 1 - Bedroom



Dimensions: 13'11" x 8'6"
Area: 106 sq. ft
Counted as living area: Yes

Heated: Yes
Finished: Yes
Enclosed: Yes
Contiguous: Yes
Permitted: Yes
Wet space: No
Addition: No
Conversion: No

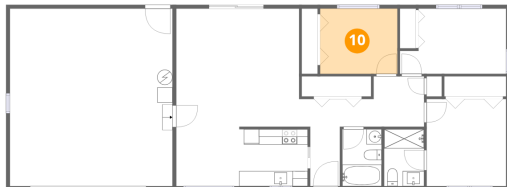
9 Floor 1 - Bath



Dimensions: 5'1" x 7'6"
Area: 39 sq. ft
Counted as living area: Yes

Heated: Yes
Finished: Yes
Enclosed: Yes
Contiguous: Yes
Permitted: Yes
Wet space: Yes
Addition: No
Conversion: No

10 Floor 1 - Bedroom



Dimensions: 10'2" x 8'7"
Area: 87 sq. ft
Counted as living area: Yes

Heated: Yes
Finished: Yes
Enclosed: Yes
Contiguous: Yes
Permitted: Yes
Wet space: No
Addition: No
Conversion: No

11 Floor 1 - Dining Area



Dimensions: 8'4" x 7'9"
Area: 65 sq. ft
Counted as living area: Yes

Heated: Yes
Finished: Yes
Enclosed: Yes
Contiguous: Yes
Permitted: Yes
Wet space: No
Addition: No
Conversion: No