

Home report

5801 Story Road, South Timnath, Timnath, Larimer County, Colorado, United States, 80547




Total Area: 5362 sq. ft

Below Ground: 1341 sq. ft, Floor 2: 1994 sq. ft, Floor 3: 2027 sq. ft

Excluded: Undefined 11 sq. ft, Utility 486 sq. ft, Garage 612 sq. ft, Covered patio 587 sq. ft, Open to below 415 sq. ft, Walls: 330 sq. ft

Property summary

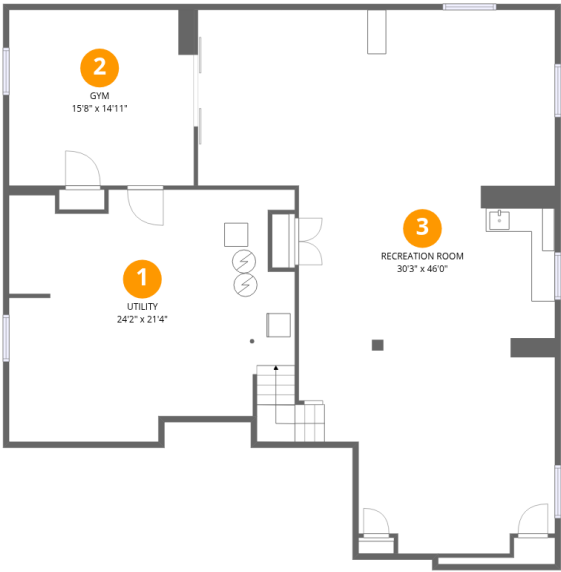
 **3** Floors

 **4** Bedrooms

 **4** Bathrooms

 **1** Garages

5801 Story Road, South Timnath, Timnath, Larimer County,  
Colorado, United States, 80547



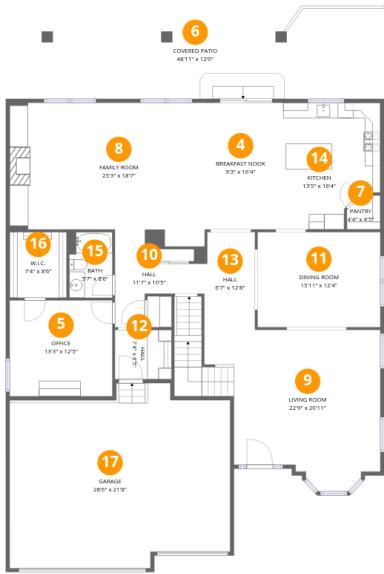
Room dimensions

Floor 1 Below ground Total:1341sqft Excluded: 497sqft

#		Max Dimensions	sqft	Included
1	Utility	24'2" x 21'4"	484 sq. ft	No
2	Gym	15'8" x 14'11"	233 sq. ft	Yes
3	Recreation Room	30'3" x 46'0"	1046 sq. ft	Yes

Home report

5801 Story Road, South Timnath, Timnath, Larimer County, Colorado, United States, 80547



Room dimensions

Floor 2 Total:1994sqft   Excluded: 1199sqft

#		Max Dimensions	sqft	Included
4	Breakfast Nook	9'3" x 16'4"	152 sq. ft	Yes
5	Office	13'3" x 12'5"	165 sq. ft	Yes
6	Covered Patio	48'11" x 12'0"	587 sq. ft	No
7	Pantry	4'4" x 4'5"	17 sq. ft	Yes
8	Family Room	25'3" x 18'7"	438 sq. ft	Yes
9	Living Room	22'9" x 20'11"	435 sq. ft	Yes
10	Hall	11'7" x 10'5"	70 sq. ft	Yes
11	Dining Room	15'11" x 12'4"	195 sq. ft	Yes
12	Hall	7'4" x 6'5"	47 sq. ft	Yes
13	Hall	6'7" x 12'8"	81 sq. ft	Yes
14	Kitchen	13'5" x 16'4"	200 sq. ft	Yes

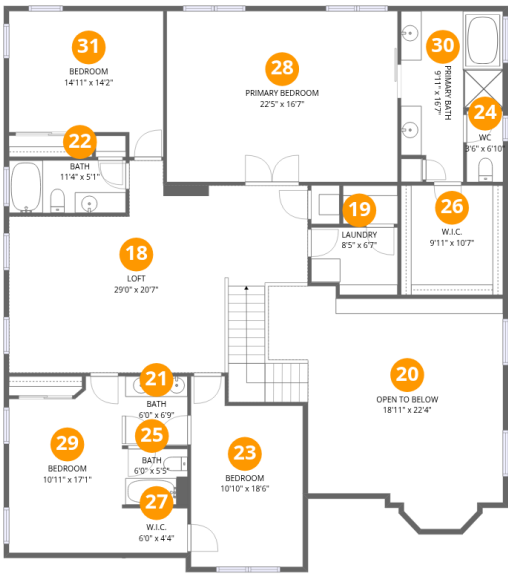
Home report

5801 Story Road, South Timnath, Timnath, Larimer County,  
Colorado, United States, 80547

#		Max Dimensions	sqft	Included
15	Bath	5'7" x 8'6"	47 sq. ft	Yes
16	W.I.C.	7'4" x 8'6"	63 sq. ft	Yes
17	Garage	28'6" x 21'8"	612 sq. ft	No

Home report

5801 Story Road, South Timnath, Timnath, Larimer County, Colorado, United States, 80547



Room dimensions

Floor 3 Total:2027sqft Excluded: 415sqft

#		Max Dimensions	sqft	Included
18	Loft	29'0" x 20'7"	494 sq. ft	Yes
19	Laundry	8'5" x 6'7"	52 sq. ft	Yes
20	Open To Below	18'11" x 22'4"	414 sq. ft	No
21	Bath	6'0" x 6'9"	40 sq. ft	Yes
22	Bath	11'4" x 5'1"	58 sq. ft	Yes
23	Bedroom	10'10" x 18'6"	179 sq. ft	Yes
24	WC	3'6" x 6'10"	24 sq. ft	Yes
25	Bath	6'0" x 5'5"	32 sq. ft	Yes
26	W.I.C.	9'11" x 10'7"	105 sq. ft	Yes
27	W.I.C.	6'0" x 4'4"	26 sq. ft	Yes
28	Primary Bedroom	22'5" x 16'7"	371 sq. ft	Yes

Home report

5801 Story Road, South Timnath, Timnath, Larimer County,  
Colorado, United States, 80547

#		Max Dimensions	sqft	Included
29	Bedroom	10'11" x 17'1"	172 sq. ft	Yes
30	Primary Bath	9'11" x 16'7"	130 sq. ft	Yes
31	Bedroom	14'11" x 14'2"	184 sq. ft	Yes

5801 Story Road, South Timnath, Timnath, Larimer County,  
Colorado, United States, 80547

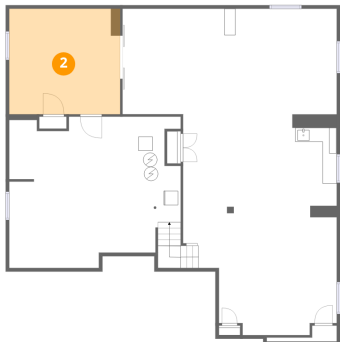
1 Floor 1 - Utility



Max Dimensions: 24'2" x 21'4"  
Calculated Area: 484 sq. ft  
Included: No

Heated: Yes  
Finished: No  
Enclosed: Yes  
Contiguous: Yes  
Permitted: Yes  
Wet space: No  
Addition: No  
Conversion: No

2 Floor 1 - Gym

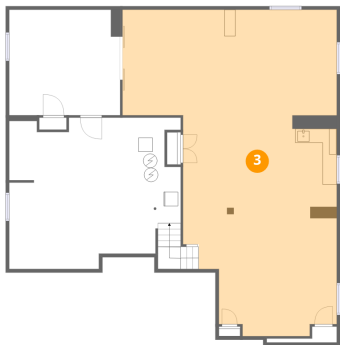


Max Dimensions: 15'8" x 14'11"  
Calculated Area: 233 sq. ft  
Included: Yes

Heated: Yes  
Finished: Yes  
Enclosed: Yes  
Contiguous: Yes  
Permitted: Yes  
Wet space: No  
Addition: No  
Conversion: No

5801 Story Road, South Timnath, Timnath, Larimer County,  
Colorado, United States, 80547

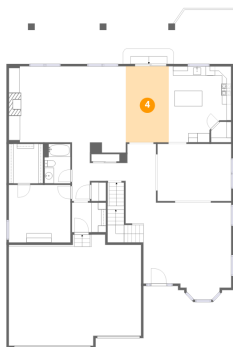
3 Floor 1 - Recreation Room



Max Dimensions: 30'3" x 46'0"  
Calculated Area: 1046 sq. ft  
Included: Yes

Heated: Yes  
Finished: Yes  
Enclosed: Yes  
Contiguous: Yes  
Permitted: Yes  
Wet space: No  
Addition: No  
Conversion: No

4 Floor 2 - Breakfast Nook



Max Dimensions: 9'3" x 16'4"  
Calculated Area: 152 sq. ft  
Included: Yes

Heated: Yes  
Finished: Yes  
Enclosed: Yes  
Contiguous: Yes  
Permitted: Yes  
Wet space: No  
Addition: No  
Conversion: No

5 Floor 2 - Office



Max Dimensions: 13'3" x 12'5"  
Calculated Area: 165 sq. ft  
Included: Yes

Heated: Yes  
Finished: Yes  
Enclosed: Yes  
Contiguous: Yes  
Permitted: Yes  
Wet space: No  
Addition: No  
Conversion: No

5801 Story Road, South Timnath, Timnath, Larimer County,  
Colorado, United States, 80547

6 Floor 2 - Covered Patio



Max Dimensions: 48'11" x 12'0"  
Calculated Area: 587 sq. ft  
Included: No

Heated: No  
Finished: No  
Enclosed: No  
Contiguous: Yes  
Permitted: Yes  
Wet space: No  
Addition: No  
Conversion: No

7 Floor 2 - Pantry



Max Dimensions: 4'4" x 4'5"  
Calculated Area: 17 sq. ft  
Included: Yes

Heated: Yes  
Finished: Yes  
Enclosed: Yes  
Contiguous: Yes  
Permitted: Yes  
Wet space: No  
Addition: No  
Conversion: No

8 Floor 2 - Family Room

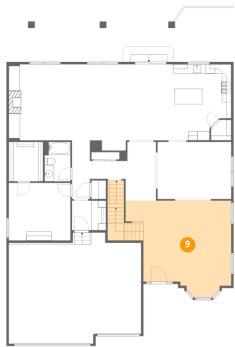


Max Dimensions: 25'3" x 18'7"  
Calculated Area: 438 sq. ft  
Included: Yes

Heated: Yes  
Finished: Yes  
Enclosed: Yes  
Contiguous: Yes  
Permitted: Yes  
Wet space: No  
Addition: No  
Conversion: No

5801 Story Road, South Timnath, Timnath, Larimer County,  
Colorado, United States, 80547

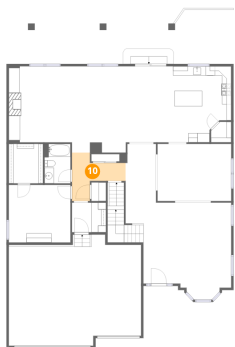
9 Floor 2 - Living Room



Max Dimensions: 22'9" x 20'11"  
Calculated Area: 435 sq. ft  
Included: Yes

Heated: Yes  
Finished: Yes  
Enclosed: Yes  
Contiguous: Yes  
Permitted: Yes  
Wet space: No  
Addition: No  
Conversion: No

10 Floor 2 - Hall



Max Dimensions: 11'7" x 10'5"  
Calculated Area: 70 sq. ft  
Included: Yes

Heated: Yes  
Finished: Yes  
Enclosed: Yes  
Contiguous: Yes  
Permitted: Yes  
Wet space: No  
Addition: No  
Conversion: No

11 Floor 2 - Dining Room

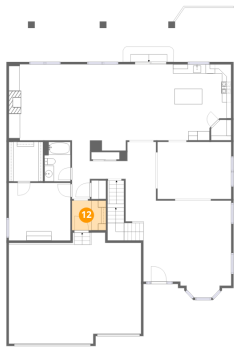


Max Dimensions: 15'11" x 12'4"  
Calculated Area: 195 sq. ft  
Included: Yes

Heated: Yes  
Finished: Yes  
Enclosed: Yes  
Contiguous: Yes  
Permitted: Yes  
Wet space: No  
Addition: No  
Conversion: No

5801 Story Road, South Timnath, Timnath, Larimer County,  
Colorado, United States, 80547

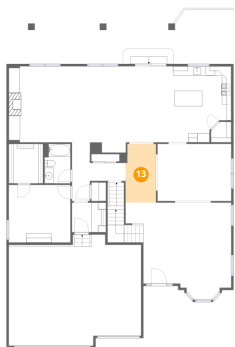
12 Floor 2 - Hall



Max Dimensions: 7'4" x 6'5"  
Calculated Area: 47 sq. ft  
Included: Yes

Heated: Yes  
Finished: Yes  
Enclosed: Yes  
Contiguous: Yes  
Permitted: Yes  
Wet space: No  
Addition: No  
Conversion: No

13 Floor 2 - Hall



Max Dimensions: 6'7" x 12'8"  
Calculated Area: 81 sq. ft  
Included: Yes

Heated: Yes  
Finished: Yes  
Enclosed: Yes  
Contiguous: Yes  
Permitted: Yes  
Wet space: No  
Addition: No  
Conversion: No

14 Floor 2 - Kitchen



Max Dimensions: 13'5" x 16'4"  
Calculated Area: 200 sq. ft  
Included: Yes

Heated: Yes  
Finished: Yes  
Enclosed: Yes  
Contiguous: Yes  
Permitted: Yes  
Wet space: No  
Addition: No  
Conversion: No

5801 Story Road, South Timnath, Timnath, Larimer County,  
Colorado, United States, 80547

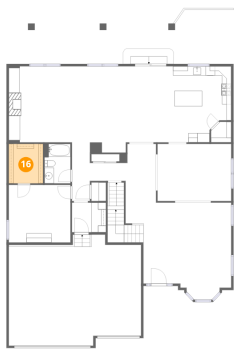
15 Floor 2 - Bath



Max Dimensions: 5'7" x 8'6"  
Calculated Area: 47 sq. ft  
Included: Yes

Heated: Yes  
Finished: Yes  
Enclosed: Yes  
Contiguous: Yes  
Permitted: Yes  
Wet space: Yes  
Addition: No  
Conversion: No

16 Floor 2 - W.I.C.



Max Dimensions: 7'4" x 8'6"  
Calculated Area: 63 sq. ft  
Included: Yes

Heated: Yes  
Finished: Yes  
Enclosed: Yes  
Contiguous: Yes  
Permitted: Yes  
Wet space: No  
Addition: No  
Conversion: No

17 Floor 2 - Garage

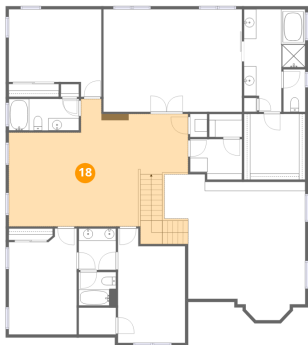


Max Dimensions: 28'6" x 21'8"  
Calculated Area: 612 sq. ft  
Included: No

Heated: No  
Finished: No  
Enclosed: Yes  
Contiguous: Yes  
Permitted: Yes  
Wet space: No  
Addition: No  
Conversion: No

5801 Story Road, South Timnath, Timnath, Larimer County,  
Colorado, United States, 80547

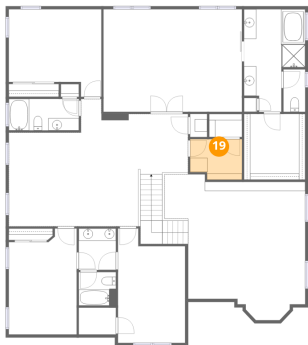
18 Floor 3 - Loft



Max Dimensions: 29'0" x 20'7"  
Calculated Area: 494 sq. ft  
Included: Yes

Heated: Yes  
Finished: Yes  
Enclosed: Yes  
Contiguous: Yes  
Permitted: Yes  
Wet space: No  
Addition: No  
Conversion: No

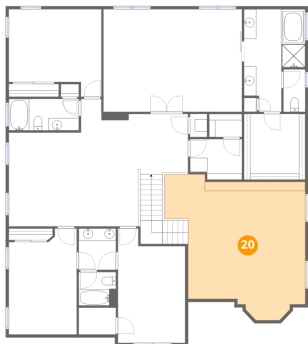
19 Floor 3 - Laundry



Max Dimensions: 8'5" x 6'7"  
Calculated Area: 52 sq. ft  
Included: Yes

Heated: Yes  
Finished: Yes  
Enclosed: Yes  
Contiguous: Yes  
Permitted: Yes  
Wet space: No  
Addition: No  
Conversion: No

20 Floor 3 - Open To Below

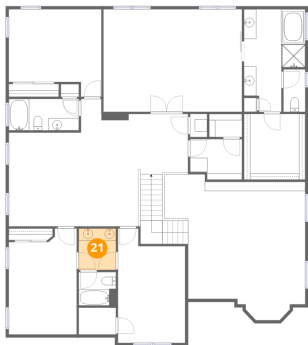


Max Dimensions: 18'11" x 22'4"  
Calculated Area: 414 sq. ft  
Included: No

Heated: No  
Finished: No  
Enclosed: No  
Contiguous: Yes  
Permitted: No  
Wet space: No  
Addition: No  
Conversion: No

5801 Story Road, South Timnath, Timnath, Larimer County,  
Colorado, United States, 80547

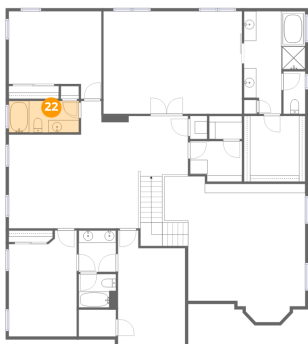
21 Floor 3 - Bath



Max Dimensions: 6'0" x 6'9"  
Calculated Area: 40 sq. ft  
Included: Yes

Heated: Yes  
Finished: Yes  
Enclosed: Yes  
Contiguous: Yes  
Permitted: Yes  
Wet space: Yes  
Addition: No  
Conversion: No

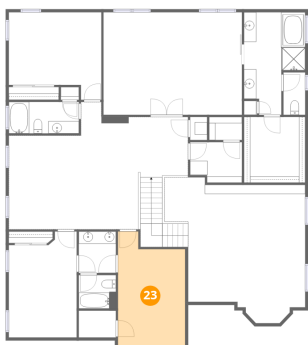
22 Floor 3 - Bath



Max Dimensions: 11'4" x 5'1"  
Calculated Area: 58 sq. ft  
Included: Yes

Heated: Yes  
Finished: Yes  
Enclosed: Yes  
Contiguous: Yes  
Permitted: Yes  
Wet space: Yes  
Addition: No  
Conversion: No

23 Floor 3 - Bedroom

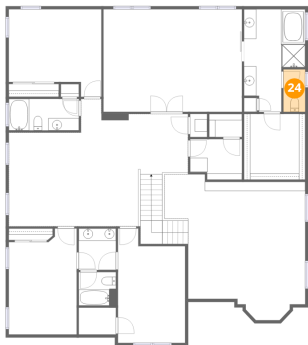


Max Dimensions: 10'10" x 18'6"  
Calculated Area: 179 sq. ft  
Included: Yes

Heated: Yes  
Finished: Yes  
Enclosed: Yes  
Contiguous: Yes  
Permitted: Yes  
Wet space: No  
Addition: No  
Conversion: No

5801 Story Road, South Timnath, Timnath, Larimer County,  
Colorado, United States, 80547

24 Floor 3 - WC



Max Dimensions: 3'6" x 6'10"  
Calculated Area: 24 sq. ft  
Included: Yes

Heated: Yes  
Finished: Yes  
Enclosed: Yes  
Contiguous: Yes  
Permitted: Yes  
Wet space: Yes  
Addition: No  
Conversion: No

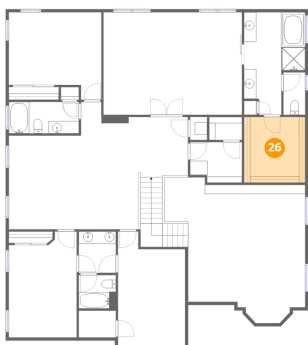
25 Floor 3 - Bath



Max Dimensions: 6'0" x 5'5"  
Calculated Area: 32 sq. ft  
Included: Yes

Heated: Yes  
Finished: Yes  
Enclosed: Yes  
Contiguous: Yes  
Permitted: Yes  
Wet space: Yes  
Addition: No  
Conversion: No

26 Floor 3 - W.I.C.

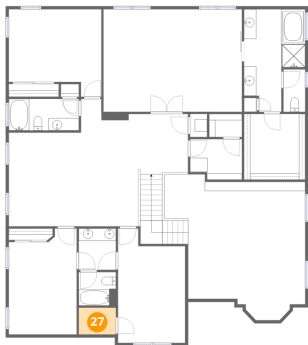


Max Dimensions: 9'11" x 10'7"  
Calculated Area: 105 sq. ft  
Included: Yes

Heated: Yes  
Finished: Yes  
Enclosed: Yes  
Contiguous: Yes  
Permitted: Yes  
Wet space: No  
Addition: No  
Conversion: No

5801 Story Road, South Timnath, Timnath, Larimer County,  
Colorado, United States, 80547

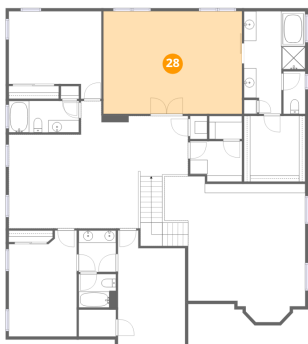
27 Floor 3 - W.I.C.



Max Dimensions: 6'0" x 4'4"  
Calculated Area: 26 sq. ft  
Included: Yes

Heated: Yes  
Finished: Yes  
Enclosed: Yes  
Contiguous: Yes  
Permitted: Yes  
Wet space: No  
Addition: No  
Conversion: No

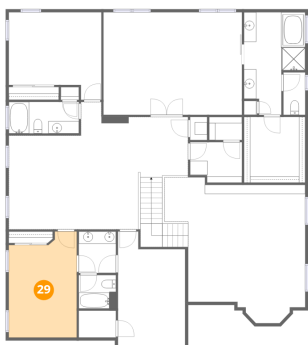
28 Floor 3 - Primary Bedroom



Max Dimensions: 22'5" x 16'7"  
Calculated Area: 371 sq. ft  
Included: Yes

Heated: Yes  
Finished: Yes  
Enclosed: Yes  
Contiguous: Yes  
Permitted: Yes  
Wet space: No  
Addition: No  
Conversion: No

29 Floor 3 - Bedroom

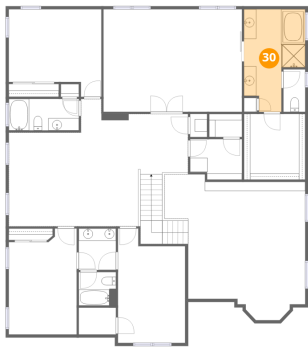


Max Dimensions: 10'11" x 17'1"  
Calculated Area: 172 sq. ft  
Included: Yes

Heated: Yes  
Finished: Yes  
Enclosed: Yes  
Contiguous: Yes  
Permitted: Yes  
Wet space: No  
Addition: No  
Conversion: No

5801 Story Road, South Timnath, Timnath, Larimer County,  
Colorado, United States, 80547

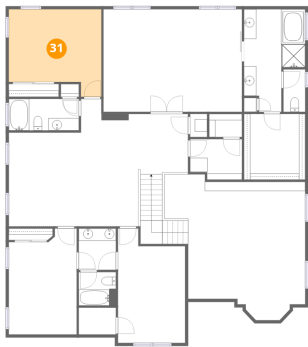
30 Floor 3 - Primary Bath



Max Dimensions: 9'11" x 16'7"  
Calculated Area: 130 sq. ft  
Included: Yes

Heated: Yes  
Finished: Yes  
Enclosed: Yes  
Contiguous: Yes  
Permitted: Yes  
Wet space: Yes  
Addition: No  
Conversion: No

31 Floor 3 - Bedroom



Max Dimensions: 14'11" x 14'2"  
Calculated Area: 184 sq. ft  
Included: Yes

Heated: Yes  
Finished: Yes  
Enclosed: Yes  
Contiguous: Yes  
Permitted: Yes  
Wet space: No  
Addition: No  
Conversion: No