

Home data report

525 W Mechanic St, Shelbyville, IN, US




Total Area: 903 sq. ft

Basement: 0 sq. ft, 1st Floor: 903 sq. ft

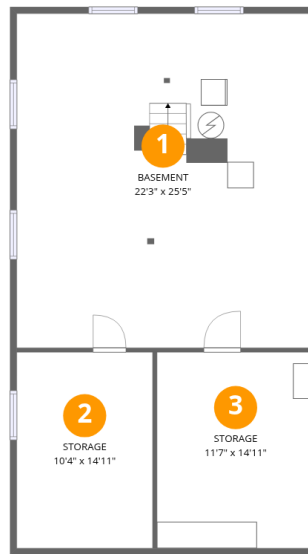
Excluded: Storage 338 sq. ft, Basement 564 sq. ft, Porch 145 sq. ft, Walls: 128 sq. ft

Property summary

 **2** Floors

 **2** Bedrooms

 **1** Bathrooms



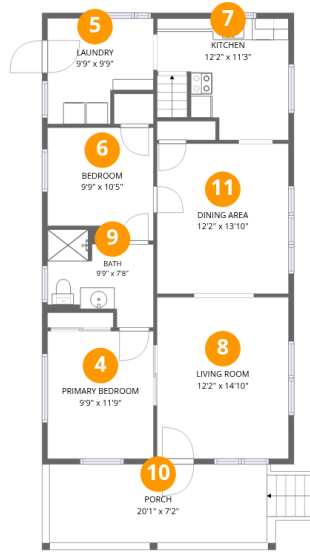
Room dimensions

Floor 1 Below grade

Total: 0sqft

Excluded: 902sqft

#		Dimensions	sqft	Counted as living area
1	Basement	22'3" x 25'5"	564 sq. ft	No
2	Storage	10'4" x 14'11"	154 sq. ft	No
3	Storage	11'7" x 14'11"	172 sq. ft	No



Room dimensions

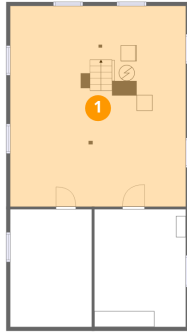
Floor 2

Total: 903sqft

Excluded: 145sqft

#		Dimensions	sqft	Counted as living area
4	Primary Bedroom	9'9" x 11'9"	115 sq. ft	Yes
5	Laundry	9'9" x 9'9"	83 sq. ft	Yes
6	Bedroom	9'9" x 10'5"	93 sq. ft	Yes
7	Kitchen	12'2" x 11'3"	111 sq. ft	Yes
8	Living Room	12'2" x 14'10"	181 sq. ft	Yes
9	Bath	9'9" x 7'8"	71 sq. ft	Yes
10	Porch	20'1" x 7'2"	145 sq. ft	No
11	Dining Area	12'2" x 13'10"	168 sq. ft	Yes

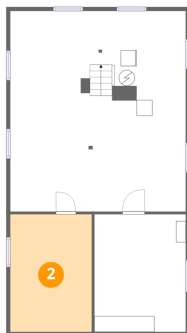
1 Floor 1 - Basement



Dimensions: 22'3" x 25'5"
Area: 564 sq. ft
Counted as living area: No

Heated: Yes
Finished: No
Enclosed: Yes
Contiguous: Yes
Permitted: Yes
Wet space: No
Addition: No
Conversion: No

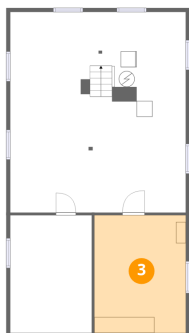
2 Floor 1 - Storage



Dimensions: 10'4" x 14'11"
Area: 154 sq. ft
Counted as living area: No

Heated: No
Finished: No
Enclosed: No
Contiguous: Yes
Permitted: Yes
Wet space: No
Addition: No
Conversion: No

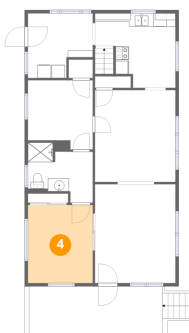
3 Floor 1 - Storage



Dimensions: 11'7" x 14'11"
Area: 172 sq. ft
Counted as living area: No

Heated: No
Finished: No
Enclosed: No
Contiguous: Yes
Permitted: Yes
Wet space: No
Addition: No
Conversion: No

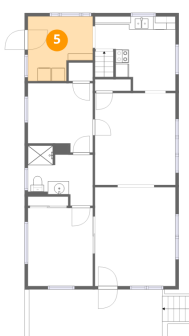
4 Floor 2 - Primary Bedroom



Dimensions: 9'9" x 11'9"
Area: 115 sq. ft
Counted as living area: Yes

Heated: Yes
Finished: Yes
Enclosed: Yes
Contiguous: Yes
Permitted: Yes
Wet space: No
Addition: No
Conversion: No

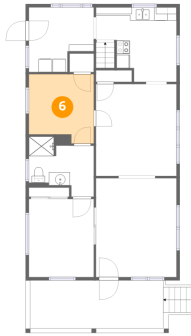
5 Floor 2 - Laundry



Dimensions: 9'9" x 9'9"
Area: 83 sq. ft
Counted as living area: Yes

Heated: Yes
Finished: Yes
Enclosed: Yes
Contiguous: Yes
Permitted: Yes
Wet space: No
Addition: No
Conversion: No

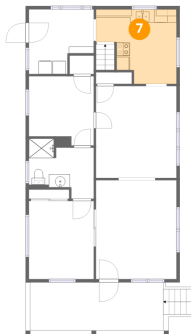
6 Floor 2 - Bedroom



Dimensions: 9'9" x 10'5"
Area: 93 sq. ft
Counted as living area: Yes

Heated: Yes
Finished: Yes
Enclosed: Yes
Contiguous: Yes
Permitted: Yes
Wet space: No
Addition: No
Conversion: No

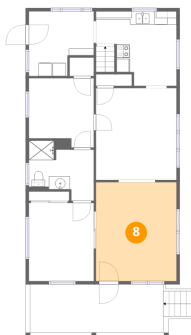
7 Floor 2 - Kitchen



Dimensions: 12'2" x 11'3"
Area: 111 sq. ft
Counted as living area: Yes

Heated: Yes
Finished: Yes
Enclosed: Yes
Contiguous: Yes
Permitted: Yes
Wet space: No
Addition: No
Conversion: No

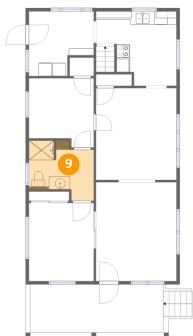
8 Floor 2 - Living Room



Dimensions: 12'2" x 14'10"
Area: 181 sq. ft
Counted as living area: Yes

Heated: Yes
Finished: Yes
Enclosed: Yes
Contiguous: Yes
Permitted: Yes
Wet space: No
Addition: No
Conversion: No

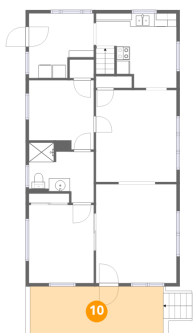
9 Floor 2 - Bath



Dimensions: 9'9" x 7'8"
Area: 71 sq. ft
Counted as living area: Yes

Heated: Yes
Finished: Yes
Enclosed: Yes
Contiguous: Yes
Permitted: Yes
Wet space: Yes
Addition: No
Conversion: No

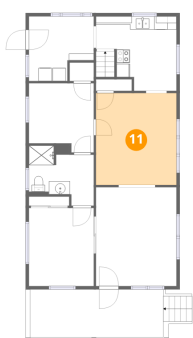
10 Floor 2 - Porch



Dimensions: 20'1" x 7'2"
Area: 145 sq. ft
Counted as living area: No

Heated: No
Finished: No
Enclosed: No
Contiguous: Yes
Permitted: Yes
Wet space: No
Addition: No
Conversion: No

11 Floor 2 - Dining Area



Dimensions: 12'2" x 13'10"
Area: 168 sq. ft
Counted as living area: Yes

Heated: Yes
Finished: Yes
Enclosed: Yes
Contiguous: Yes
Permitted: Yes
Wet space: No
Addition: No
Conversion: No