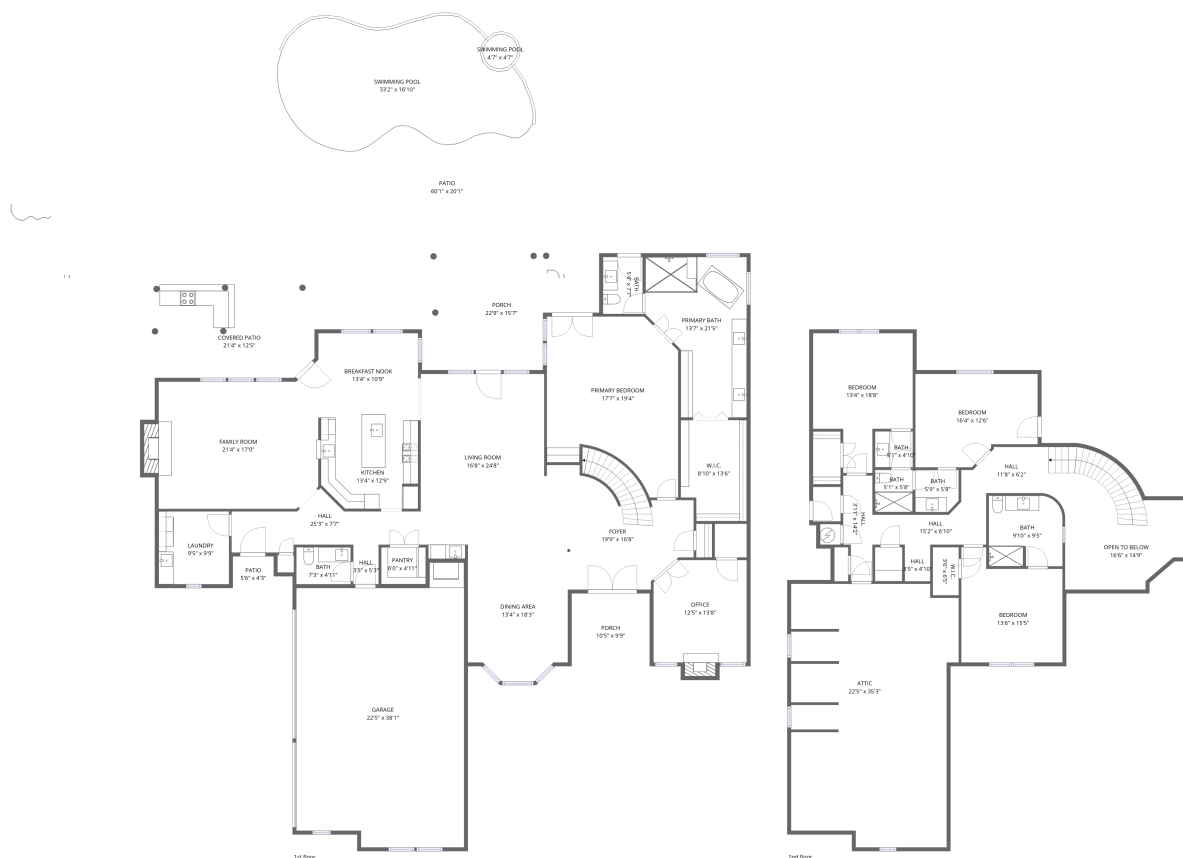


Home data report

504 Pine Island Circle, Heath, Rockwall County, Texas, United States, 75032



Total Area: 4040 sq. ft

1st Floor: 2872 sq. ft, 2nd Floor: 1168 sq. ft

Excluded: Garage 773 sq. ft, Porch 405 sq. ft, Covered patio 264 sq. ft, Patio 757 sq. ft, Fireplace 25 sq. ft, Open to below 189 sq. ft, Low ceiling 371 sq. ft, Attic 352 sq. ft, Walls: 307 sq. ft

Property summary



2 Floors



4 Bedrooms



3 Bathrooms

Home data report

504 Pine Island Circle, Heath, Rockwall County, Texas, United States, 75032

 **1**
Half baths

 **1**
Garages

504 Pine Island Circle, Heath, Rockwall County, Texas, United States, 75032



Room dimensions

Floor 1

Total:2872sqft

Excluded: 2224sqft

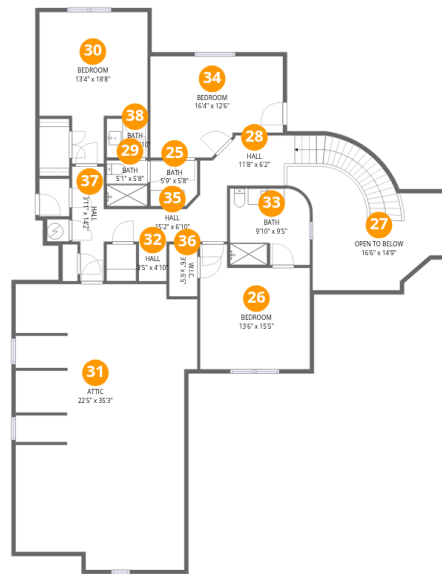
#		Dimensions	sqft	Counted as living area
1	Living Room	16'8" x 24'8"	412 sq. ft	Yes
2	Primary Bedroom	17'7" x 19'4"	339 sq. ft	Yes
3	W.I.C.	8'10" x 13'6"	119 sq. ft	Yes
4	Swimming Pool	4'7" x 4'7"	21 sq. ft	No
5	Porch	10'5" x 9'9"	101 sq. ft	No
6	Foyer	19'9" x 16'8"	329 sq. ft	Yes
7	Office	12'5" x 13'8"	171 sq. ft	Yes
8	Patio	5'6" x 4'3"	23 sq. ft	No
9	Porch	22'9" x 15'7"	354 sq. ft	No
10	Bath	7'3" x 4'11"	36 sq. ft	Yes
11	Hall	25'3" x 7'7"	191 sq. ft	Yes

Home data report

504 Pine Island Circle, Heath, Rockwall County, Texas, United States, 75032

#		Dimensions	sqft	Counted as living area
12	Swimming Pool	33'2" x 16'10"	557 sq. ft	No
13	Kitchen	13'4" x 12'9"	170 sq. ft	Yes
14	Garage	22'5" x 38'1"	853 sq. ft	No
15	Dining Area	13'4" x 18'3"	243 sq. ft	Yes
16	Covered Patio	21'4" x 12'5"	265 sq. ft	No
17	Patio	60'1" x 20'1"	1208 sq. ft	No
18	Breakfast Nook	13'4" x 10'9"	143 sq. ft	Yes
19	Family Room	21'4" x 17'0"	362 sq. ft	Yes
20	Pantry	6'0" x 4'11"	29 sq. ft	Yes
21	Primary Bath	13'7" x 21'5"	291 sq. ft	Yes
22	Bath	5'4" x 7'7"	40 sq. ft	Yes
23	Laundry	9'5" x 9'9"	92 sq. ft	Yes
24	Hall	3'5" x 5'3"	18 sq. ft	Yes

504 Pine Island Circle, Heath, Rockwall County, Texas, United States, 75032



Room dimensions

Floor 2

Total: 1168sqft

Excluded: 912sqft

#		Dimensions	sqft	Counted as living area
25	Bath	5'9" x 5'8"	33 sq. ft	Yes
26	Bedroom	13'6" x 15'5"	208 sq. ft	Yes
27	Open To Below	16'6" x 14'9"	243 sq. ft	No
28	Hall	11'8" x 6'2"	72 sq. ft	Yes
29	Bath	5'1" x 5'8"	29 sq. ft	Yes
30	Bedroom	13'4" x 18'8"	249 sq. ft	Yes
31	Attic	22'5" x 35'3"	789 sq. ft	No
32	Hall	3'5" x 4'10"	17 sq. ft	Yes
33	Bath	9'10" x 9'5"	93 sq. ft	Yes
34	Bedroom	16'4" x 12'6"	204 sq. ft	Yes
35	Hall	15'2" x 6'10"	104 sq. ft	Yes

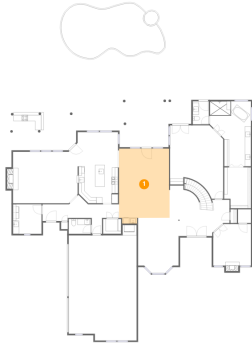
Home data report

504 Pine Island Circle, Heath, Rockwall County, Texas, United States, 75032

#		Dimensions	sqft	Counted as living area
36	W.I.C.	3'6" x 6'5"	22 sq. ft	Yes
37	Hall	3'11" x 14'2"	55 sq. ft	Yes
38	Bath	5'1" x 4'10"	24 sq. ft	Yes

504 Pine Island Circle, Heath, Rockwall County, Texas, United States, 75032

1 Floor 1 - Living Room



Dimensions: 16'8" x 24'8"
Area: 412 sq. ft
Counted as living area: Yes

Heated: Yes
Finished: Yes
Enclosed: Yes
Contiguous: Yes
Permitted: Yes
Wet space: No
Addition: No
Conversion: No

2 Floor 1 - Primary Bedroom



Dimensions: 17'7" x 19'4"
Area: 339 sq. ft
Counted as living area: Yes

Heated: Yes
Finished: Yes
Enclosed: Yes
Contiguous: Yes
Permitted: Yes
Wet space: No
Addition: No
Conversion: No

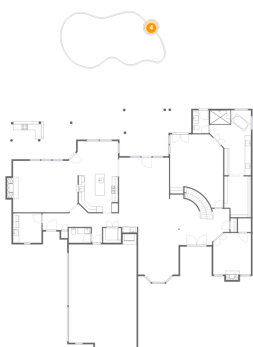
3 Floor 1 - W.I.C.



Dimensions: 8'10" x 13'6"
Area: 119 sq. ft
Counted as living area: Yes

Heated: Yes
Finished: Yes
Enclosed: Yes
Contiguous: Yes
Permitted: Yes
Wet space: No
Addition: No
Conversion: No

4 Floor 1 - Swimming Pool



Dimensions: 4'7" x 4'7"
Area: 21 sq. ft
Counted as living area: No

Heated: No
Finished: No
Enclosed: No
Contiguous: Yes
Permitted: No
Wet space: No
Addition: No
Conversion: No

5 Floor 1 - Porch

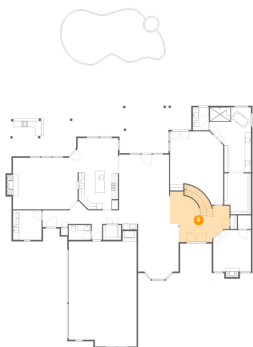


Dimensions: 10'5" x 9'9"
Area: 101 sq. ft
Counted as living area: No

Heated: No
Finished: No
Enclosed: No
Contiguous: Yes
Permitted: Yes
Wet space: No
Addition: No
Conversion: No

504 Pine Island Circle, Heath, Rockwall County, Texas, United States, 75032

6 Floor 1 - Foyer



Dimensions: 19'9" x 16'8"
Area: 329 sq. ft
Counted as living area: Yes

Heated: Yes
Finished: Yes
Enclosed: Yes
Contiguous: Yes
Permitted: Yes
Wet space: No
Addition: No
Conversion: No

7 Floor 1 - Office



Dimensions: 12'5" x 13'8"
Area: 171 sq. ft
Counted as living area: Yes

Heated: Yes
Finished: Yes
Enclosed: Yes
Contiguous: Yes
Permitted: Yes
Wet space: No
Addition: No
Conversion: No

8 Floor 1 - Patio



Dimensions: 5'6" x 4'3"
Area: 23 sq. ft
Counted as living area: No

Heated: No
Finished: No
Enclosed: No
Contiguous: Yes
Permitted: Yes
Wet space: No
Addition: No
Conversion: No

504 Pine Island Circle, Heath, Rockwall County, Texas, United States, 75032

9 Floor 1 - Porch



Dimensions: 22'9" x 15'7"
Area: 354 sq. ft
Counted as living area: No

Heated: No
Finished: No
Enclosed: No
Contiguous: Yes
Permitted: Yes
Wet space: No
Addition: No
Conversion: No

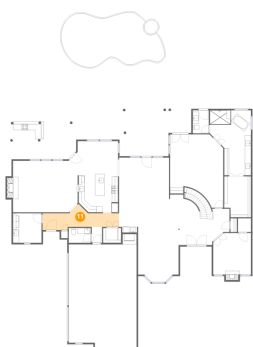
10 Floor 1 - Bath



Dimensions: 7'3" x 4'11"
Area: 36 sq. ft
Counted as living area: Yes

Heated: Yes
Finished: Yes
Enclosed: Yes
Contiguous: Yes
Permitted: Yes
Wet space: Yes
Addition: No
Conversion: No

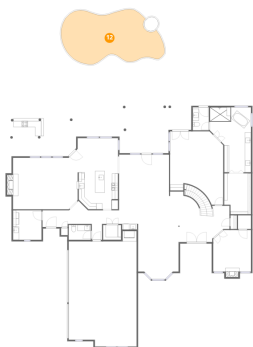
11 Floor 1 - Hall



Dimensions: 25'3" x 7'7"
Area: 191 sq. ft
Counted as living area: Yes

Heated: Yes
Finished: Yes
Enclosed: Yes
Contiguous: Yes
Permitted: Yes
Wet space: No
Addition: No
Conversion: No

12 Floor 1 - Swimming Pool



Dimensions: 33'2" x 16'10"
Area: 557 sq. ft
Counted as living area: No

Heated: No
Finished: No
Enclosed: No
Contiguous: Yes
Permitted: No
Wet space: No
Addition: No
Conversion: No

13 Floor 1 - Kitchen



Dimensions: 13'4" x 12'9"
Area: 170 sq. ft
Counted as living area: Yes

Heated: Yes
Finished: Yes
Enclosed: Yes
Contiguous: Yes
Permitted: Yes
Wet space: No
Addition: No
Conversion: No

14 Floor 1 - Garage



Dimensions: 22'5" x 38'1"
Area: 853 sq. ft
Counted as living area: No

Heated: No
Finished: No
Enclosed: Yes
Contiguous: Yes
Permitted: Yes
Wet space: No
Addition: No
Conversion: No

504 Pine Island Circle, Heath, Rockwall County, Texas, United States, 75032

15 Floor 1 - Dining Area



Dimensions: 13'4" x 18'3"
Area: 243 sq. ft
Counted as living area: Yes

Heated: Yes
Finished: Yes
Enclosed: Yes
Contiguous: Yes
Permitted: Yes
Wet space: No
Addition: No
Conversion: No

16 Floor 1 - Covered Patio



Dimensions: 21'4" x 12'5"
Area: 265 sq. ft
Counted as living area: No

Heated: No
Finished: No
Enclosed: No
Contiguous: Yes
Permitted: Yes
Wet space: No
Addition: No
Conversion: No

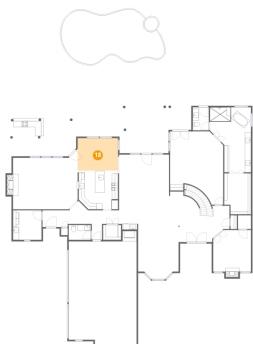
17 Floor 1 - Patio



Dimensions: 60'1" x 20'1"
Area: 1208 sq. ft
Counted as living area: No

Heated: No
Finished: No
Enclosed: No
Contiguous: Yes
Permitted: Yes
Wet space: No
Addition: No
Conversion: No

18 Floor 1 - Breakfast Nook



Dimensions: 13'4" x 10'9"
Area: 143 sq. ft
Counted as living area: Yes

Heated: Yes
Finished: Yes
Enclosed: Yes
Contiguous: Yes
Permitted: Yes
Wet space: No
Addition: No
Conversion: No

19 Floor 1 - Family Room



Dimensions: 21'4" x 17'0"
Area: 362 sq. ft
Counted as living area: Yes

Heated: Yes
Finished: Yes
Enclosed: Yes
Contiguous: Yes
Permitted: Yes
Wet space: No
Addition: No
Conversion: No

20 Floor 1 - Pantry



Dimensions: 6'0" x 4'11"
Area: 29 sq. ft
Counted as living area: Yes

Heated: Yes
Finished: Yes
Enclosed: Yes
Contiguous: Yes
Permitted: Yes
Wet space: No
Addition: No
Conversion: No

504 Pine Island Circle, Heath, Rockwall County, Texas, United States, 75032

21 Floor 1 - Primary Bath



Dimensions: 13'7" x 21'5"
Area: 291 sq. ft
Counted as living area: Yes

Heated: Yes
Finished: Yes
Enclosed: Yes
Contiguous: Yes
Permitted: Yes
Wet space: Yes
Addition: No
Conversion: No

22 Floor 1 - Bath



Dimensions: 5'4" x 7'7"
Area: 40 sq. ft
Counted as living area: Yes

Heated: Yes
Finished: Yes
Enclosed: Yes
Contiguous: Yes
Permitted: Yes
Wet space: Yes
Addition: No
Conversion: No

23 Floor 1 - Laundry



Dimensions: 9'5" x 9'9"
Area: 92 sq. ft
Counted as living area: Yes

Heated: Yes
Finished: Yes
Enclosed: Yes
Contiguous: Yes
Permitted: Yes
Wet space: No
Addition: No
Conversion: No

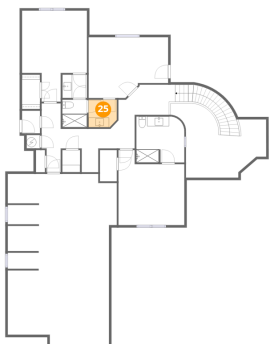
24 Floor 1 - Hall



Dimensions: 3'5" x 5'3"
Area: 18 sq. ft
Counted as living area: Yes

Heated: Yes
Finished: Yes
Enclosed: Yes
Contiguous: Yes
Permitted: Yes
Wet space: No
Addition: No
Conversion: No

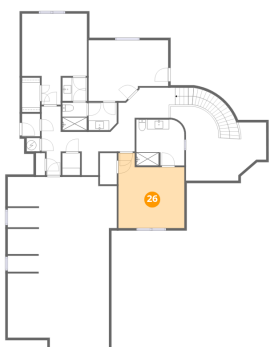
25 Floor 2 - Bath



Dimensions: 5'9" x 5'8"
Area: 33 sq. ft
Counted as living area: Yes

Heated: Yes
Finished: Yes
Enclosed: Yes
Contiguous: Yes
Permitted: Yes
Wet space: Yes
Addition: No
Conversion: No

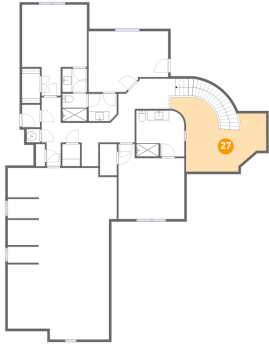
26 Floor 2 - Bedroom



Dimensions: 13'6" x 15'5"
Area: 208 sq. ft
Counted as living area: Yes

Heated: Yes
Finished: Yes
Enclosed: Yes
Contiguous: Yes
Permitted: Yes
Wet space: No
Addition: No
Conversion: No

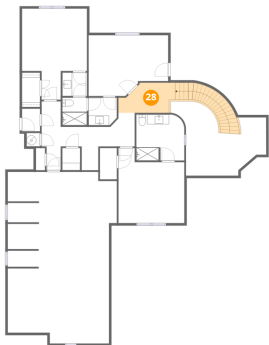
27 Floor 2 - Open To Below



Dimensions: 16'6" x 14'9"
Area: 243 sq. ft
Counted as living area: No

Heated: No
Finished: No
Enclosed: No
Contiguous: Yes
Permitted: No
Wet space: No
Addition: No
Conversion: No

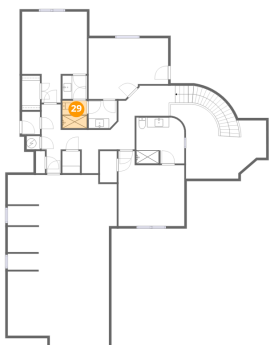
28 Floor 2 - Hall



Dimensions: 11'8" x 6'2"
Area: 72 sq. ft
Counted as living area: Yes

Heated: Yes
Finished: Yes
Enclosed: Yes
Contiguous: Yes
Permitted: Yes
Wet space: No
Addition: No
Conversion: No

29 Floor 2 - Bath

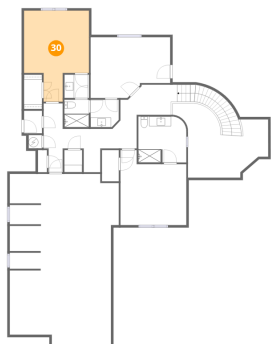


Dimensions: 5'1" x 5'8"
Area: 29 sq. ft
Counted as living area: Yes

Heated: Yes
Finished: Yes
Enclosed: Yes
Contiguous: Yes
Permitted: Yes
Wet space: Yes
Addition: No
Conversion: No

504 Pine Island Circle, Heath, Rockwall County, Texas, United States, 75032

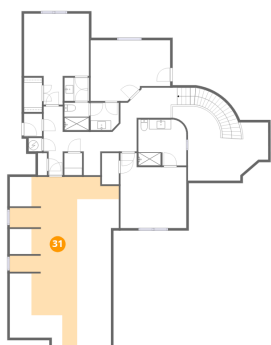
30 Floor 2 - Bedroom



Dimensions: 13'4" x 18'8"
Area: 249 sq. ft
Counted as living area: Yes

Heated: Yes
Finished: Yes
Enclosed: Yes
Contiguous: Yes
Permitted: Yes
Wet space: No
Addition: No
Conversion: No

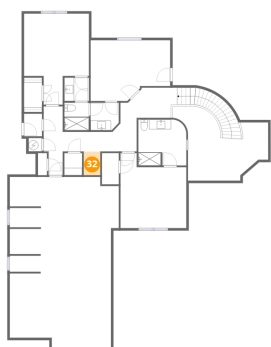
31 Floor 2 - Attic



Dimensions: 22'5" x 35'3"
Area: 789 sq. ft
Counted as living area: No

Heated: No
Finished: No
Enclosed: Yes
Contiguous: Yes
Permitted: Yes
Wet space: No
Addition: No
Conversion: No

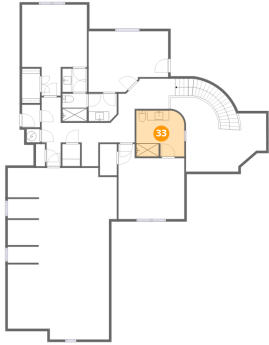
32 Floor 2 - Hall



Dimensions: 3'5" x 4'10"
Area: 17 sq. ft
Counted as living area: Yes

Heated: Yes
Finished: Yes
Enclosed: Yes
Contiguous: Yes
Permitted: Yes
Wet space: No
Addition: No
Conversion: No

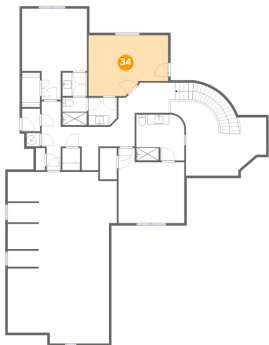
33 Floor 2 - Bath



Dimensions: 9'10" x 9'5"
Area: 93 sq. ft
Counted as living area: Yes

Heated: Yes
Finished: Yes
Enclosed: Yes
Contiguous: Yes
Permitted: Yes
Wet space: Yes
Addition: No
Conversion: No

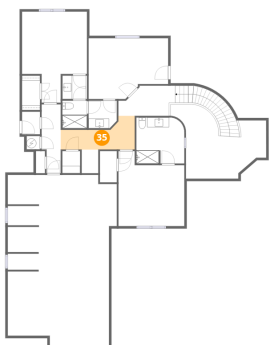
34 Floor 2 - Bedroom



Dimensions: 16'4" x 12'6"
Area: 204 sq. ft
Counted as living area: Yes

Heated: Yes
Finished: Yes
Enclosed: Yes
Contiguous: Yes
Permitted: Yes
Wet space: No
Addition: No
Conversion: No

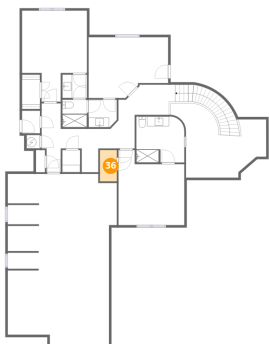
35 Floor 2 - Hall



Dimensions: 15'2" x 6'10"
Area: 104 sq. ft
Counted as living area: Yes

Heated: Yes
Finished: Yes
Enclosed: Yes
Contiguous: Yes
Permitted: Yes
Wet space: No
Addition: No
Conversion: No

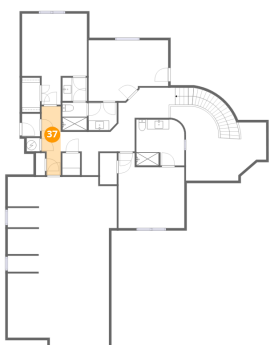
36 Floor 2 - W.I.C.



Dimensions: 3'6" x 6'5"
Area: 22 sq. ft
Counted as living area: Yes

Heated: Yes
Finished: Yes
Enclosed: Yes
Contiguous: Yes
Permitted: Yes
Wet space: No
Addition: No
Conversion: No

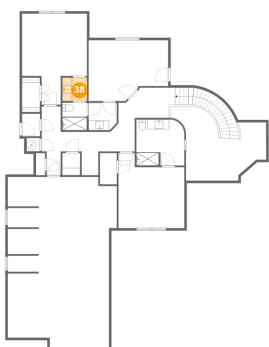
37 Floor 2 - Hall



Dimensions: 3'11" x 14'2"
Area: 55 sq. ft
Counted as living area: Yes

Heated: Yes
Finished: Yes
Enclosed: Yes
Contiguous: Yes
Permitted: Yes
Wet space: No
Addition: No
Conversion: No

38 Floor 2 - Bath



Dimensions: 5'1" x 4'10"
Area: 24 sq. ft
Counted as living area: Yes

Heated: Yes
Finished: Yes
Enclosed: Yes
Contiguous: Yes
Permitted: Yes
Wet space: Yes
Addition: No
Conversion: No