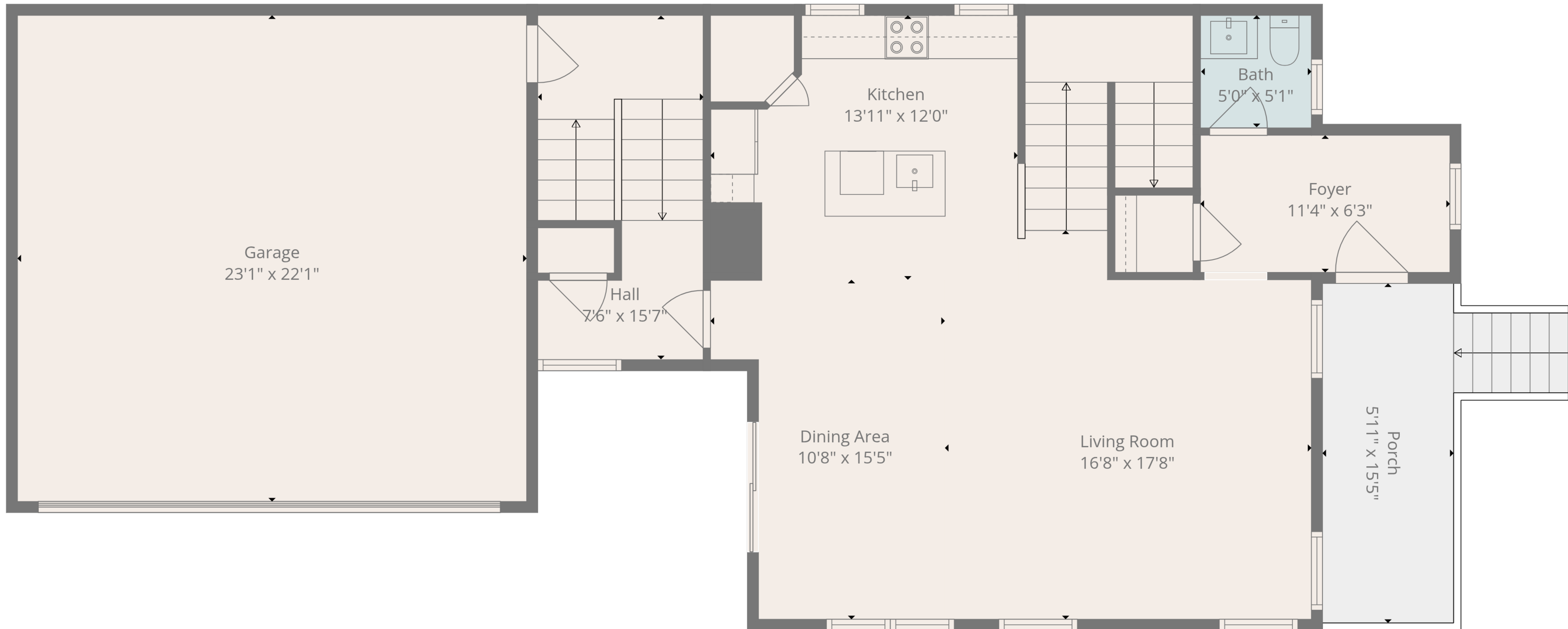


Basement
37'7" x 27'5"



TOTAL: 1923 sq. ft
Basement: 0 sq. ft, 1st floor: 884 sq. ft, 2nd floor: 1039 sq. ft
EXCLUDED AREAS: BASEMENT: 884 sq. ft, GARAGE: 510 sq. ft, PORCH: 111 sq. ft,
WALLS: 245 sq. ft



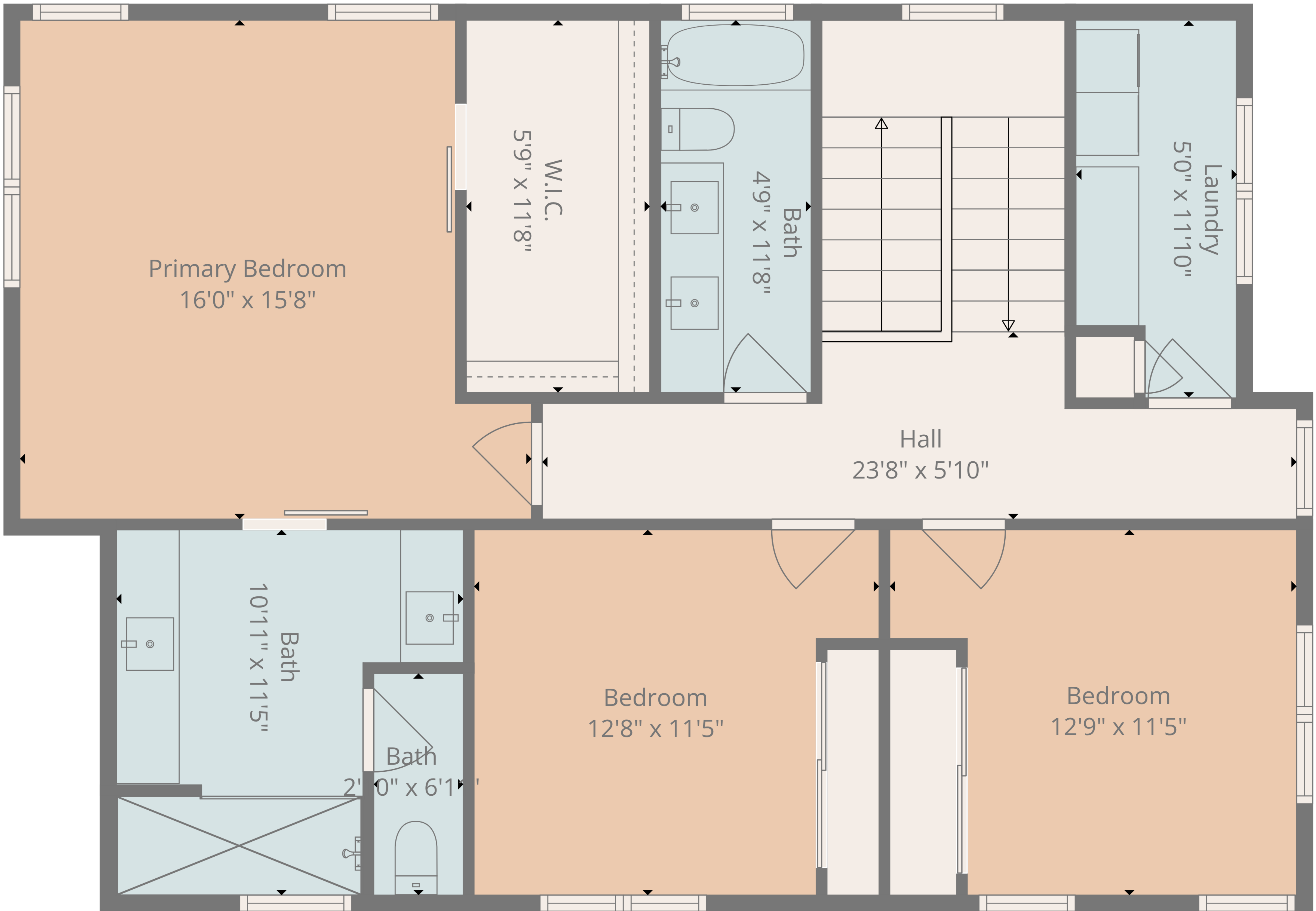


TOTAL: 1923 sq. ft

Basement: 0 sq. ft, 1st floor: 884 sq. ft, 2nd floor: 1039 sq. ft

EXCLUDED AREAS: BASEMENT: 884 sq. ft, GARAGE: 510 sq. ft, PORCH: 111 sq. ft,
WALLS: 245 sq. ft





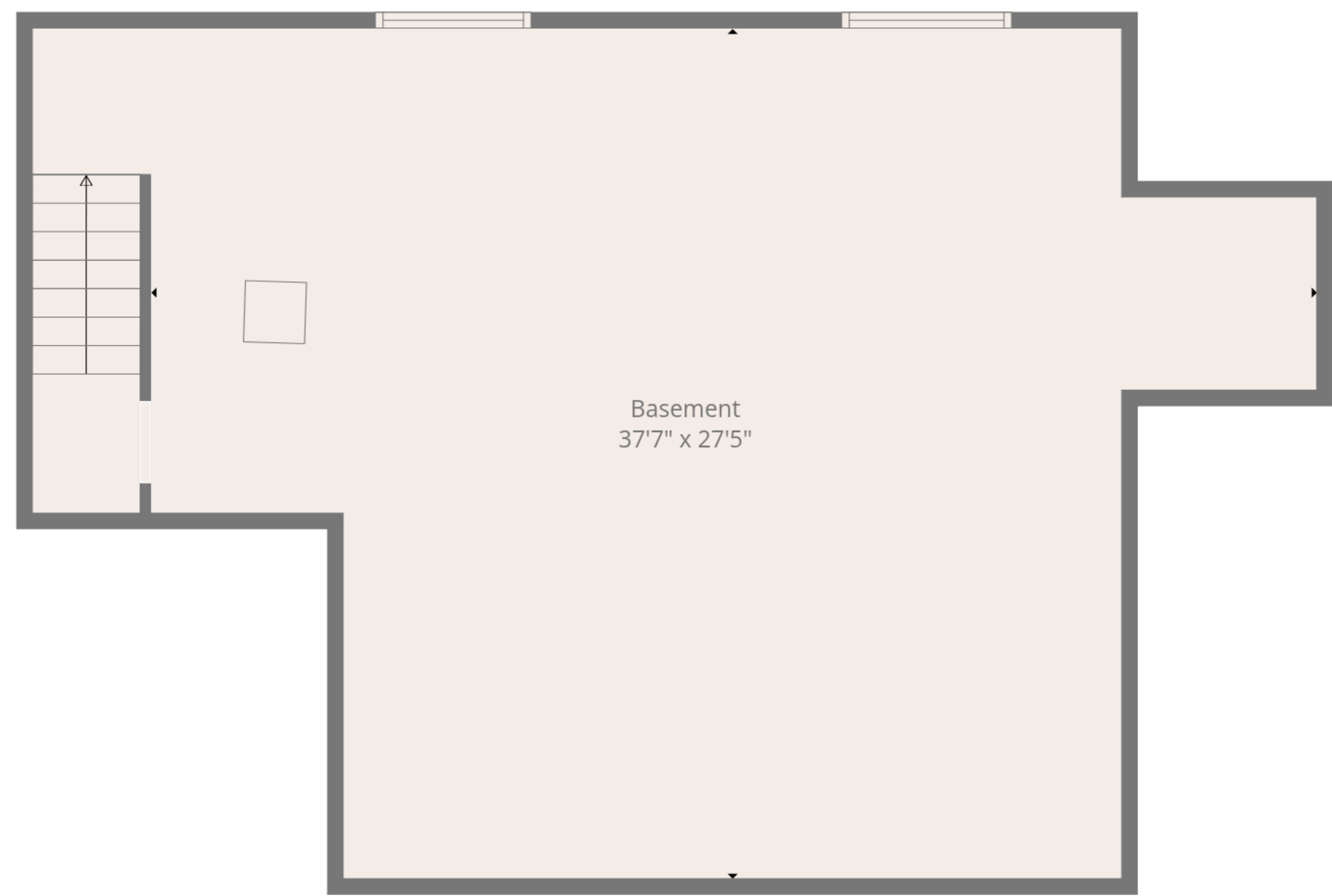
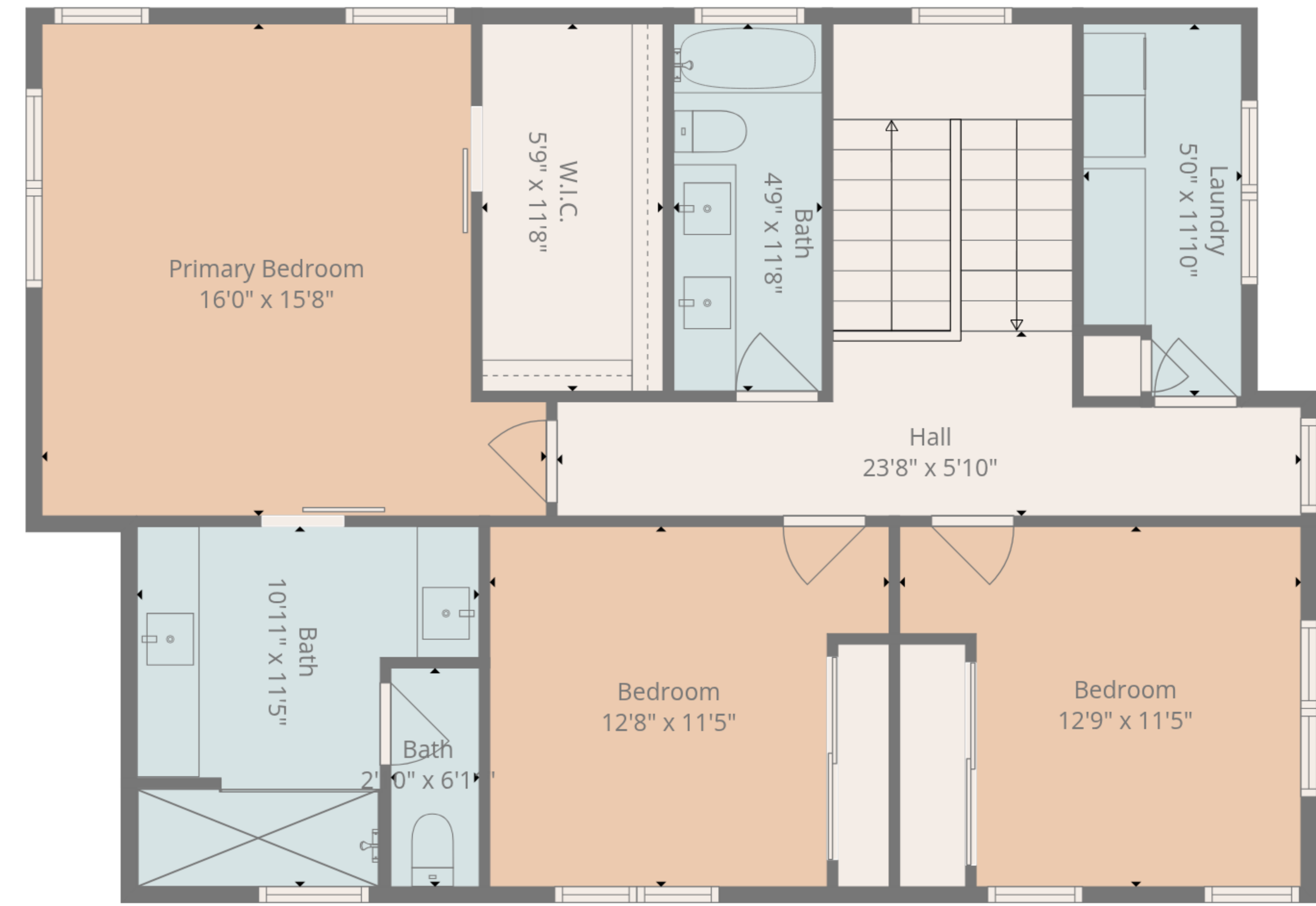
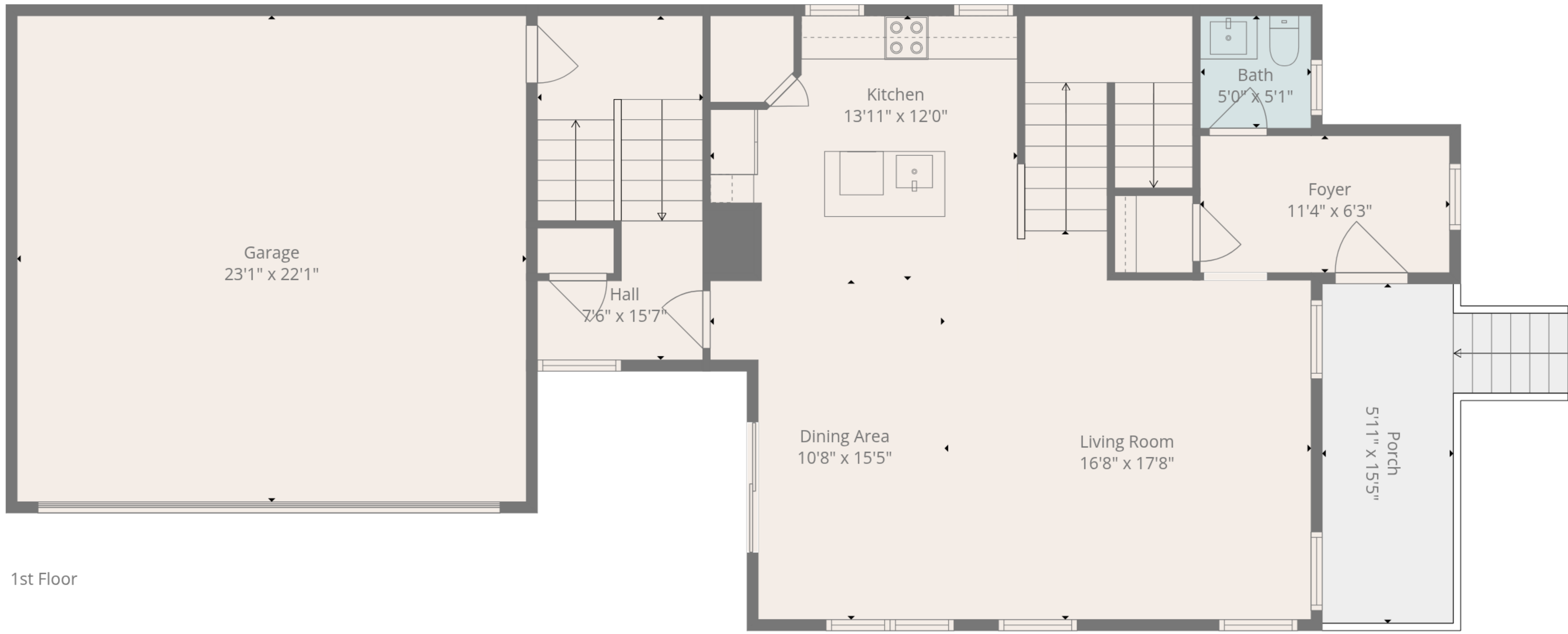
TOTAL: 1923 sq. ft

Basement: 0 sq. ft, 1st floor: 884 sq. ft, 2nd floor: 1039 sq. ft

EXCLUDED AREAS: BASEMENT: 884 sq. ft, GARAGE: 510 sq. ft, PORCH: 111 sq. ft,

WALLS: 245 sq. ft





TOTAL: 1923 sq. ft
 Basement: 0 sq. ft, 1st floor: 884 sq. ft, 2nd floor: 1039 sq. ft
 EXCLUDED AREAS: BASEMENT: 884 sq. ft, GARAGE: 510 sq. ft, PORCH: 111 sq. ft,
 WALLS: 245 sq. ft

