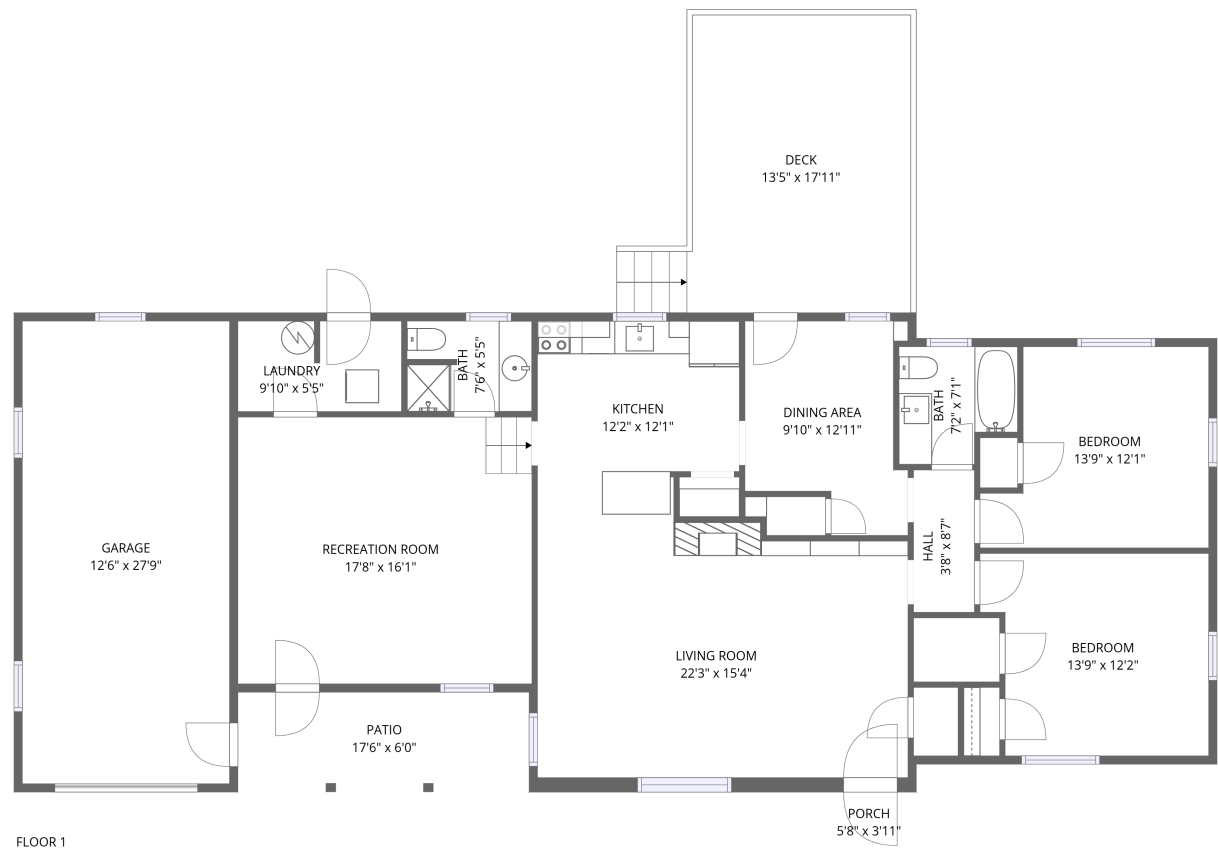


Home report

3516 Grandin Road, Cave Spring, Roanoke, Roanoke County,
Virginia, United States, 24018



Total Area: 1449 sq. ft

Floor 1: 1449 sq. ft

Excluded: Garage 347 sq. ft, Patio 105 sq. ft, Deck 236 sq. ft, Porch 22 sq. ft, Walls: 125 sq. ft

Property summary

1 Floors

2 Bedrooms

2 Bathrooms

1 Garages

Home report

3516 Grandin Road, Cave Spring, Roanoke, Roanoke County, Virginia, United States, 24018



Room dimensions

Floor 1 Total:1449sqft Excluded: 710sqft

#		Max Dimensions	sqft	Included
1	Hall	3'8" x 8'7"	31 sq. ft	Yes
2	Bath	7'6" x 5'5"	40 sq. ft	Yes
3	Living Room	22'3" x 15'4"	332 sq. ft	Yes
4	Deck	13'5" x 17'11"	236 sq. ft	No
5	Recreation Room	17'8" x 16'1"	284 sq. ft	Yes
6	Garage	12'6" x 27'9"	347 sq. ft	No
7	Dining Area	9'10" x 12'11"	106 sq. ft	Yes
8	Bedroom	13'9" x 12'1"	143 sq. ft	Yes
9	Porch	5'8" x 3'11"	22 sq. ft	No
10	Patio	17'6" x 6'0"	105 sq. ft	No
11	Laundry	9'10" x 5'5"	53 sq. ft	Yes

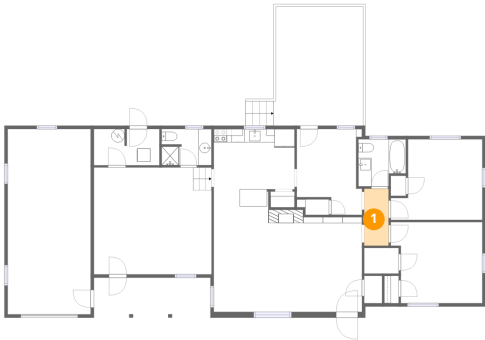
Home report

3516 Grandin Road, Cave Spring, Roanoke, Roanoke County,
Virginia, United States, 24018

#		Max Dimensions	sqft	Included
12	Bath	7'2" x 7'1"	45 sq. ft	Yes
13	Bedroom	13'9" x 12'2"	154 sq. ft	Yes
14	Kitchen	12'2" x 12'1"	135 sq. ft	Yes

3516 Grandin Road, Cave Spring, Roanoke, Roanoke County,
Virginia, United States, 24018

1 Floor 1 - Hall



Max Dimensions: 3'8" x 8'7"
Calculated Area: 31 sq. ft
Included: Yes

Heated: Yes
Finished: Yes
Enclosed: Yes
Contiguous: Yes
Permitted: Yes
Wet space: No
Addition: No
Conversion: No

2 Floor 1 - Bath

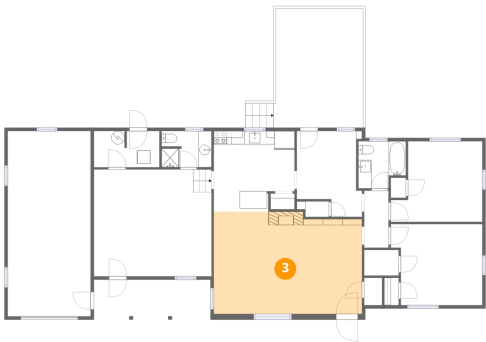


Max Dimensions: 7'6" x 5'5"
Calculated Area: 40 sq. ft
Included: Yes

Heated: Yes
Finished: Yes
Enclosed: Yes
Contiguous: Yes
Permitted: Yes
Wet space: Yes
Addition: No
Conversion: No

3516 Grandin Road, Cave Spring, Roanoke, Roanoke County,
Virginia, United States, 24018

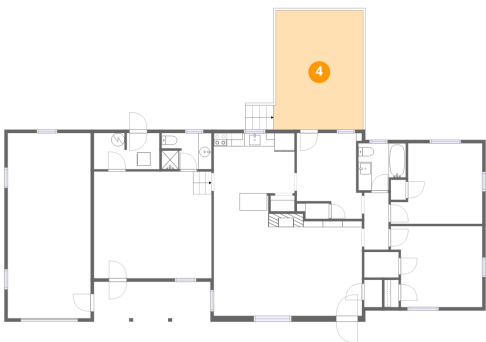
3 Floor 1 - Living Room



Max Dimensions: 22'3" x 15'4"
Calculated Area: 332 sq. ft
Included: Yes

Heated: Yes
Finished: Yes
Enclosed: Yes
Contiguous: Yes
Permitted: Yes
Wet space: No
Addition: No
Conversion: No

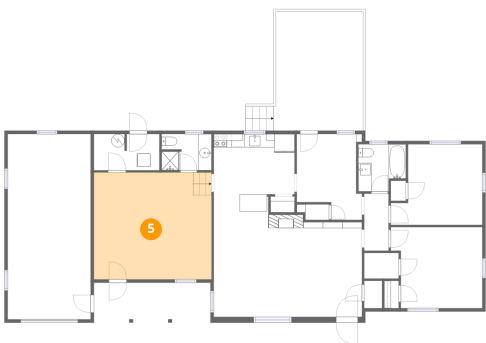
4 Floor 1 - Deck



Max Dimensions: 13'5" x 17'11"
Calculated Area: 236 sq. ft
Included: No

Heated: No
Finished: No
Enclosed: No
Contiguous: Yes
Permitted: Yes
Wet space: No
Addition: No
Conversion: No

5 Floor 1 - Recreation Room



Max Dimensions: 17'8" x 16'1"
Calculated Area: 284 sq. ft
Included: Yes

Heated: Yes
Finished: Yes
Enclosed: Yes
Contiguous: Yes
Permitted: Yes
Wet space: No
Addition: No
Conversion: No

3516 Grandin Road, Cave Spring, Roanoke, Roanoke County,
Virginia, United States, 24018

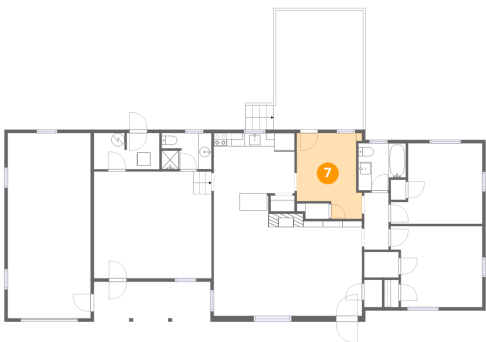
6 Floor 1 - Garage



Max Dimensions: 12'6" x 27'9"
Calculated Area: 347 sq. ft
Included: No

Heated: No
Finished: No
Enclosed: Yes
Contiguous: Yes
Permitted: Yes
Wet space: No
Addition: No
Conversion: No

7 Floor 1 - Dining Area



Max Dimensions: 9'10" x 12'11"
Calculated Area: 106 sq. ft
Included: Yes

Heated: Yes
Finished: Yes
Enclosed: Yes
Contiguous: Yes
Permitted: Yes
Wet space: No
Addition: No
Conversion: No

8 Floor 1 - Bedroom

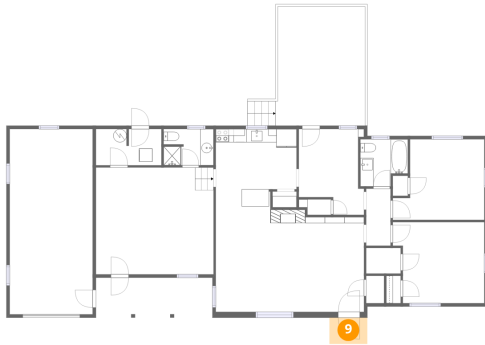


Max Dimensions: 13'9" x 12'1"
Calculated Area: 143 sq. ft
Included: Yes

Heated: Yes
Finished: Yes
Enclosed: Yes
Contiguous: Yes
Permitted: Yes
Wet space: No
Addition: No
Conversion: No

3516 Grandin Road, Cave Spring, Roanoke, Roanoke County,
Virginia, United States, 24018

9 Floor 1 - Porch



Max Dimensions: 5'8" x 3'11"
Calculated Area: 22 sq. ft
Included: No

Heated: No
Finished: No
Enclosed: No
Contiguous: Yes
Permitted: Yes
Wet space: No
Addition: No
Conversion: No

10 Floor 1 - Patio



Max Dimensions: 17'6" x 6'0"
Calculated Area: 105 sq. ft
Included: No

Heated: No
Finished: No
Enclosed: No
Contiguous: Yes
Permitted: Yes
Wet space: No
Addition: No
Conversion: No

11 Floor 1 - Laundry

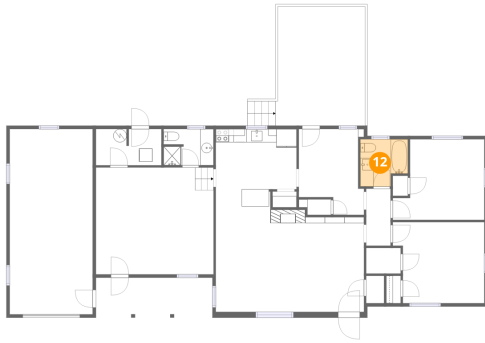


Max Dimensions: 9'10" x 5'5"
Calculated Area: 53 sq. ft
Included: Yes

Heated: Yes
Finished: Yes
Enclosed: Yes
Contiguous: Yes
Permitted: Yes
Wet space: No
Addition: No
Conversion: No

3516 Grandin Road, Cave Spring, Roanoke, Roanoke County,
Virginia, United States, 24018

12 Floor 1 - Bath



Max Dimensions: 7'2" x 7'1"
Calculated Area: 45 sq. ft
Included: Yes

Heated: Yes
Finished: Yes
Enclosed: Yes
Contiguous: Yes
Permitted: Yes
Wet space: Yes
Addition: No
Conversion: No

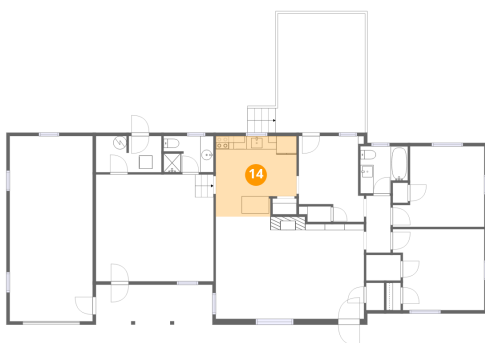
13 Floor 1 - Bedroom



Max Dimensions: 13'9" x 12'2"
Calculated Area: 154 sq. ft
Included: Yes

Heated: Yes
Finished: Yes
Enclosed: Yes
Contiguous: Yes
Permitted: Yes
Wet space: No
Addition: No
Conversion: No

14 Floor 1 - Kitchen



Max Dimensions: 12'2" x 12'1"
Calculated Area: 135 sq. ft
Included: Yes

Heated: Yes
Finished: Yes
Enclosed: Yes
Contiguous: Yes
Permitted: Yes
Wet space: No
Addition: No
Conversion: No