

Basement
21'9" x 18'11"

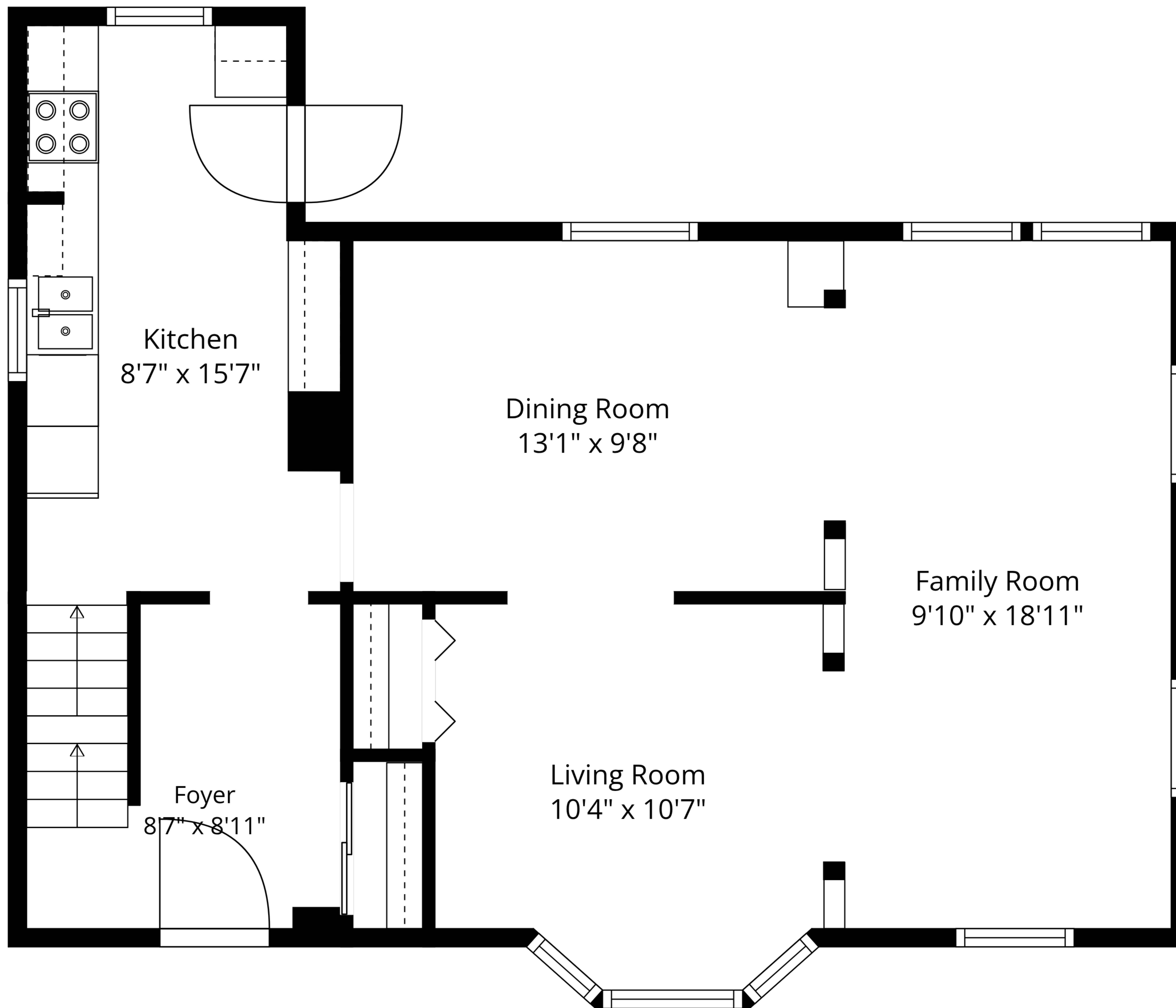
Room
9'4" x 6'5"

Room
9'4" x 12'2"

TOTAL: 1474 sq. ft

Basement: 229 sq. ft, 1st floor: 645 sq. ft, 2nd floor: 411 sq. ft, 3rd floor: 189 sq. ft
EXCLUDED AREAS: BASEMENT: 364 sq. ft, ATTIC: 72 sq. ft, LOW CEILING: 53 sq. ft,
WALLS: 188 sq. ft

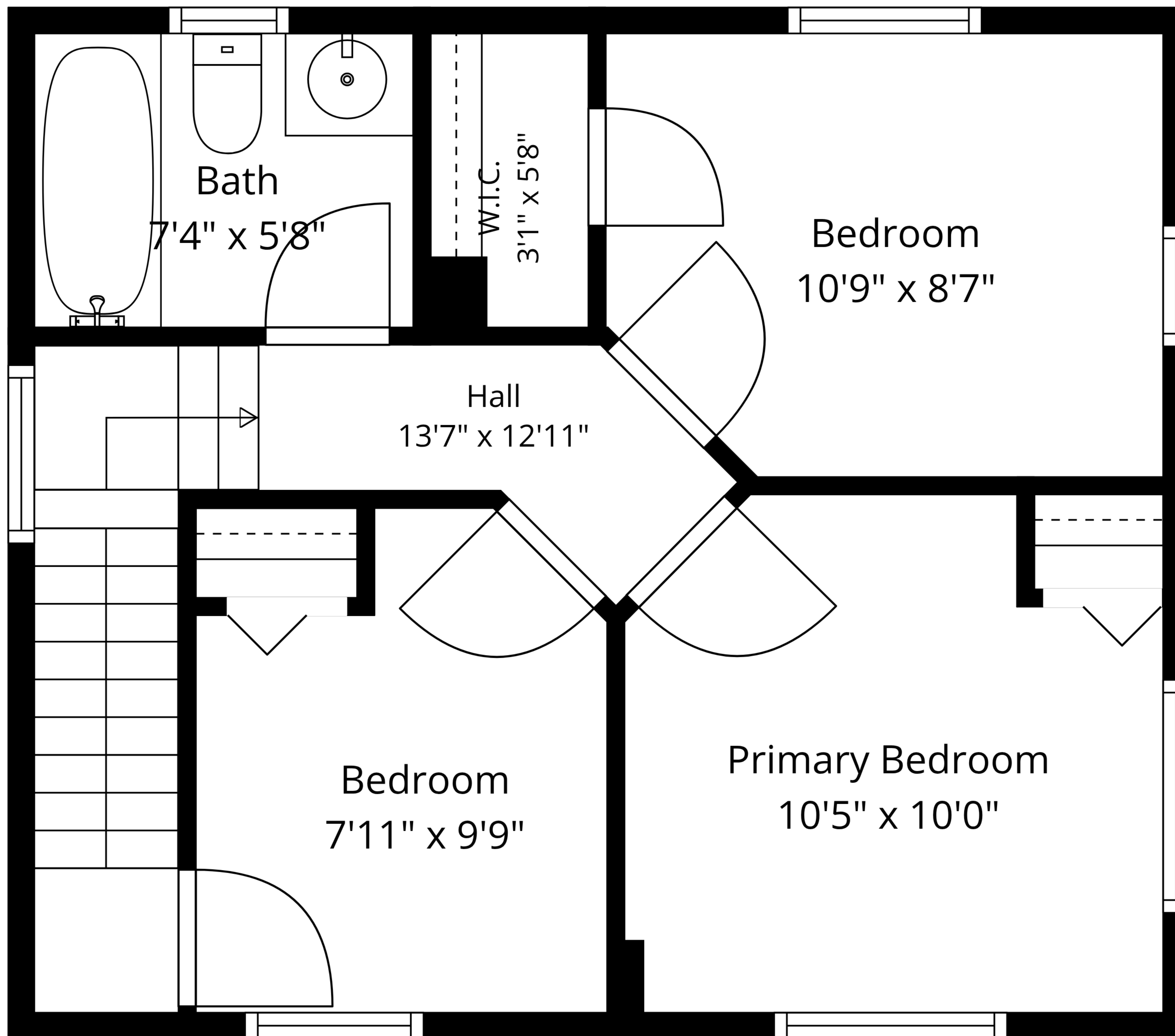
Measurements Are Approximate - Deemed Highly Reliable But Not Guaranteed



TOTAL: 1474 sq. ft

Basement: 229 sq. ft, 1st floor: 645 sq. ft, 2nd floor: 411 sq. ft, 3rd floor: 189 sq. ft
EXCLUDED AREAS: BASEMENT: 364 sq. ft, ATTIC: 72 sq. ft, LOW CEILING: 53 sq. ft,
WALLS: 188 sq. ft

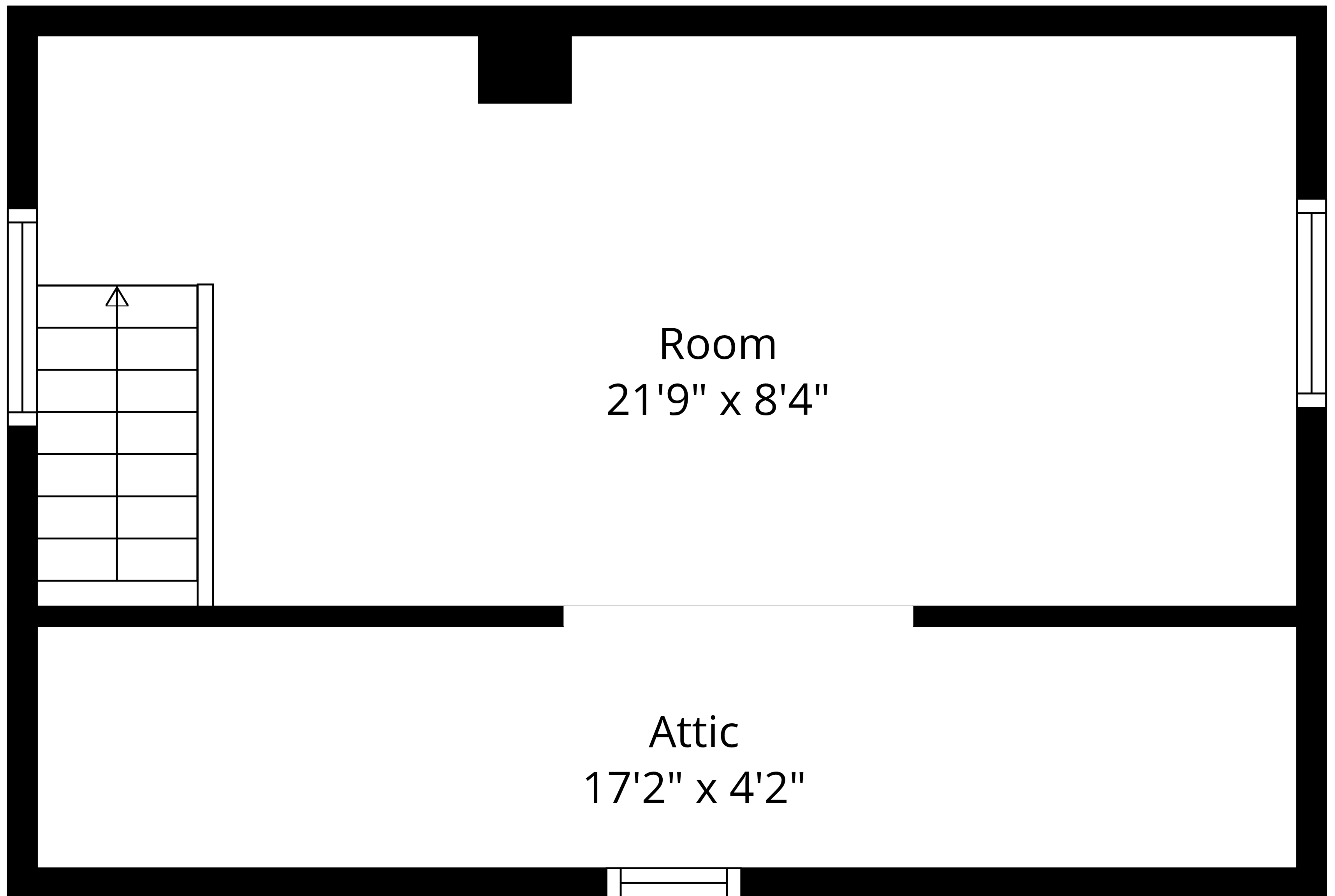
Measurements Are Approximate - Deemed Highly Reliable But Not Guaranteed



TOTAL: 1474 sq. ft

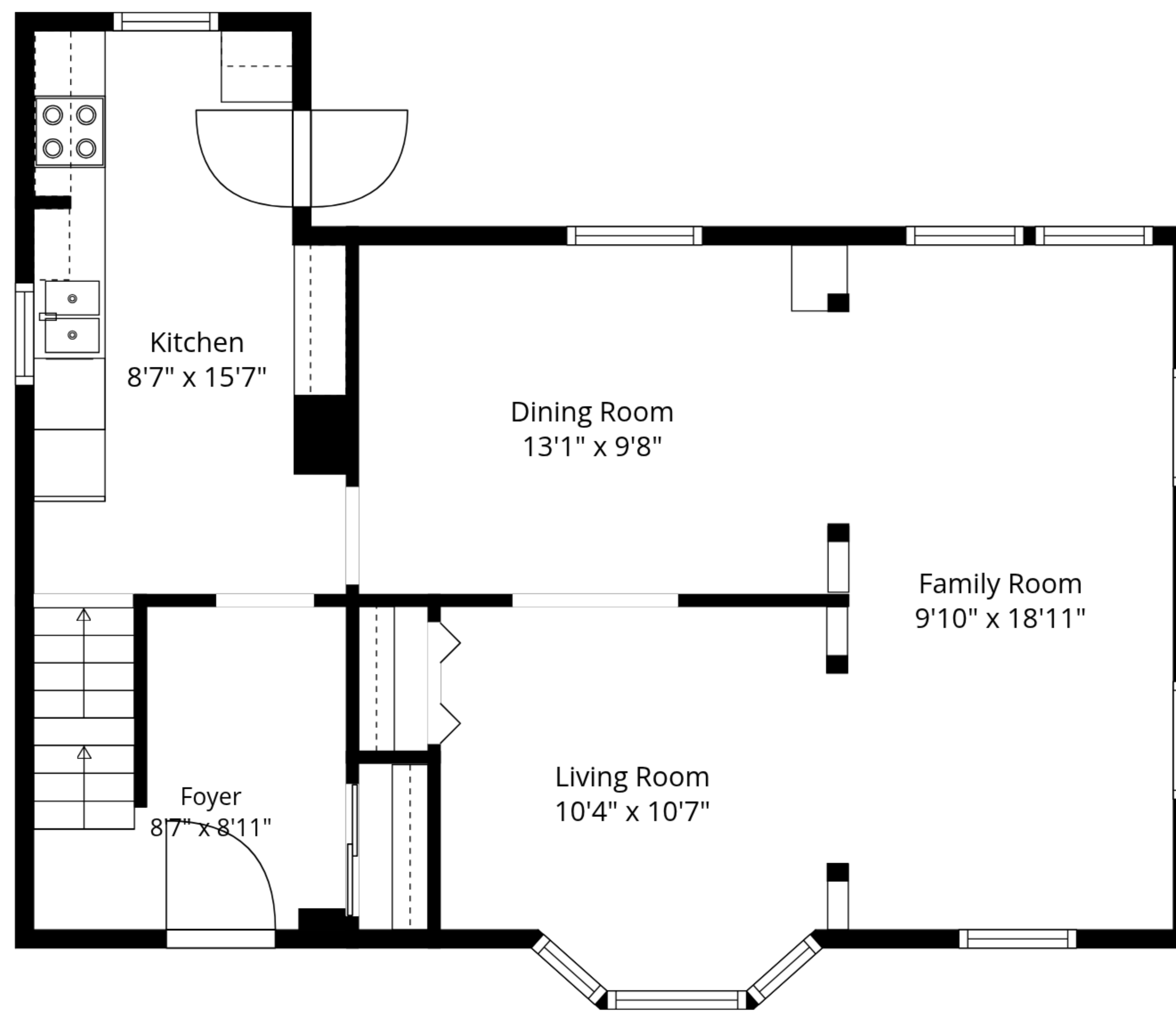
Basement: 229 sq. ft, 1st floor: 645 sq. ft, 2nd floor: 411 sq. ft, 3rd floor: 189 sq. ft
EXCLUDED AREAS: BASEMENT: 364 sq. ft, ATTIC: 72 sq. ft, LOW CEILING: 53 sq. ft,
WALLS: 188 sq. ft

Measurements Are Approximate - Deemed Highly Reliable But Not Guaranteed

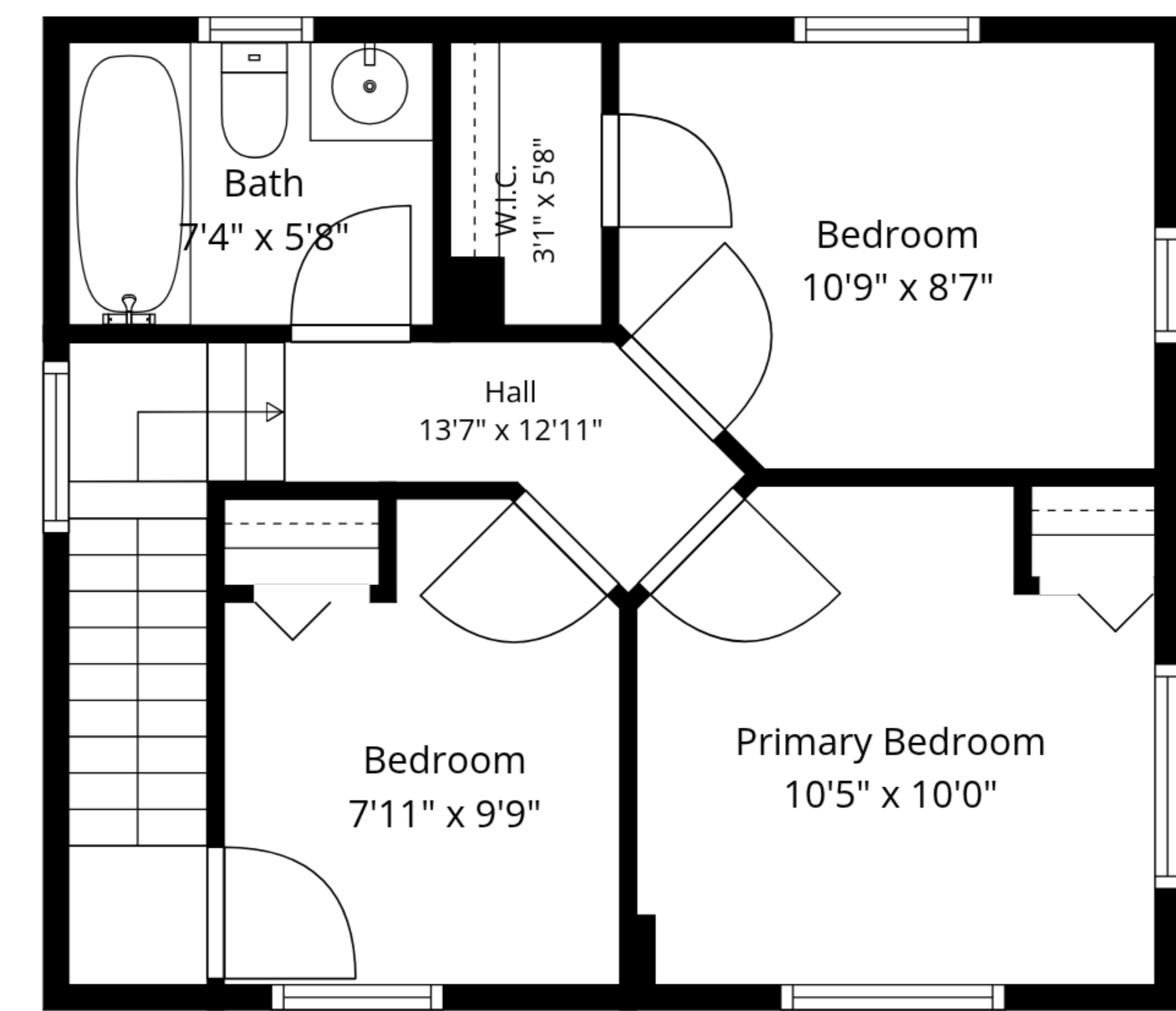


TOTAL: 1474 sq. ft

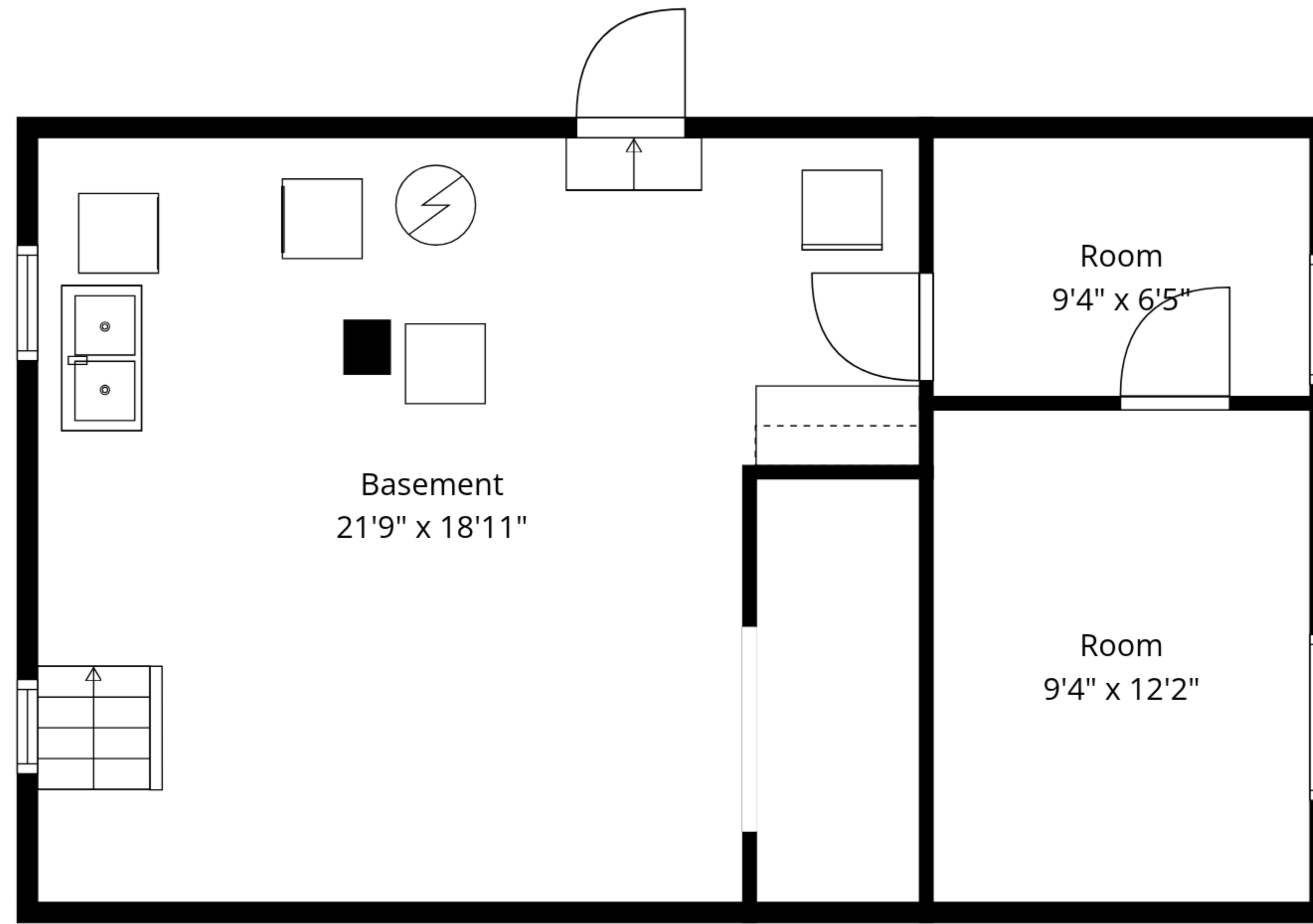
Basement: 229 sq. ft, 1st floor: 645 sq. ft, 2nd floor: 411 sq. ft, 3rd floor: 189 sq. ft
EXCLUDED AREAS: BASEMENT: 364 sq. ft, ATTIC: 72 sq. ft, LOW CEILING: 53 sq. ft,
WALLS: 188 sq. ft



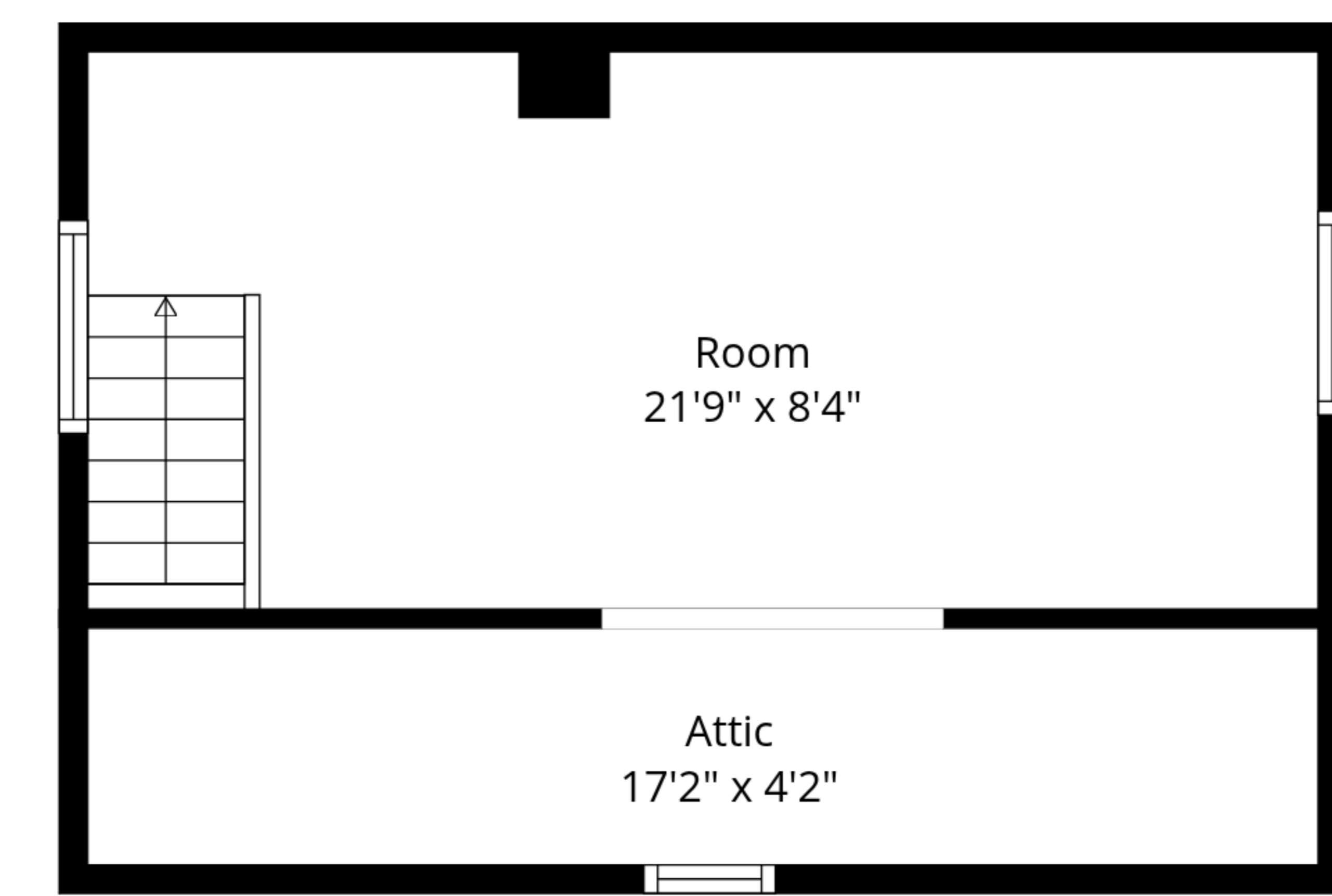
1st Floor



2nd Floor



Basement



3rd Floor

TOTAL: 1474 sq. ft
 Basement: 229 sq. ft, 1st floor: 645 sq. ft, 2nd floor: 411 sq. ft, 3rd floor: 189 sq. ft
 EXCLUDED AREAS: BASEMENT: 364 sq. ft, ATTIC: 72 sq. ft, LOW CEILING: 53 sq. ft,
 WALLS: 188 sq. ft

Measurements Are Approximate - Deemed Highly Reliable But Not Guaranteed