

Home data report

269 Black Hill Rd, Plainfield, CT, US




Total Area: 3233 sq. ft

Basement: 508 sq. ft, 1st Floor: 2725 sq. ft

Excluded: Basement 654 sq. ft, Storage 197 sq. ft, Porch 42 sq. ft, Patio 383 sq. ft, Deck 561 sq. ft, Garage 1359 sq. ft, Walls: 293 sq. ft

Property summary

 **2** Floors

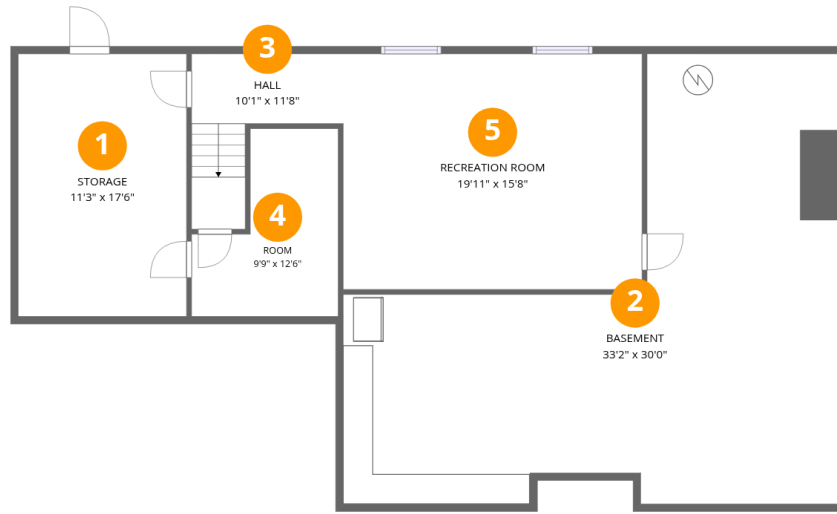
 **4** Bedrooms

 **3** Bathrooms

 **1** Garages

Home data report

269 Black Hill Rd, Plainfield, CT, US



Room dimensions

Floor 1 Below grade

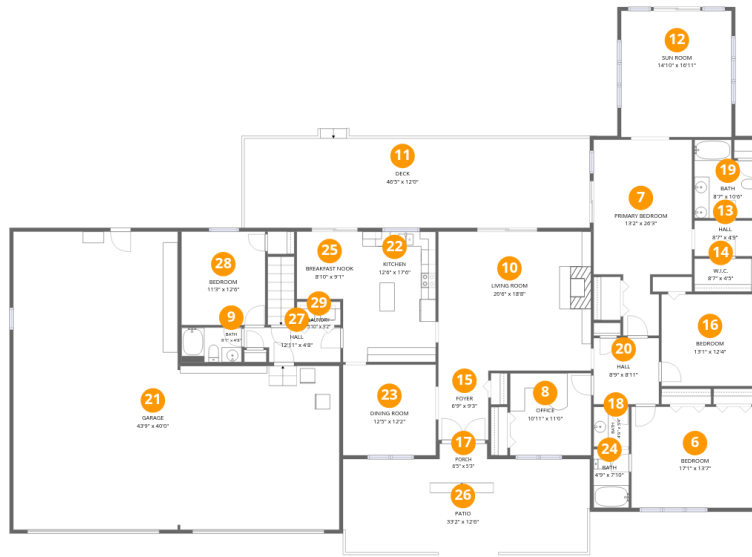
Total: 508 sqft

Excluded: 851 sqft

#		Dimensions	sqft	Counted as living area
1	Storage	11'3" x 17'6"	197 sq. ft	No
2	Basement	33'2" x 30'0"	654 sq. ft	No
3	Hall	10'1" x 11'8"	72 sq. ft	Yes
4	Room	9'9" x 12'6"	95 sq. ft	Yes
5	Recreation Room	19'11" x 15'8"	313 sq. ft	Yes

Home data report

269 Black Hill Rd, Plainfield, CT, US



Room dimensions

Floor 2

Total: 2725 sqft

Excluded: 2345 sqft

#		Dimensions	sqft	Counted as living area
6	Bedroom	17'1" x 13'8"	232 sq. ft	Yes
7	Primary Bedroom	13'2" x 26'3"	275 sq. ft	Yes
8	Office	10'11" x 11'0"	120 sq. ft	Yes
9	Bath	8'1" x 4'8"	37 sq. ft	Yes
10	Living Room	20'6" x 18'8"	383 sq. ft	Yes
11	Deck	46'5" x 12'0"	561 sq. ft	No
12	Sun Room	14'10" x 16'11"	251 sq. ft	Yes
13	Hall	8'7" x 4'9"	41 sq. ft	Yes
14	W.I.C.	8'7" x 4'5"	38 sq. ft	Yes
15	Foyer	6'9" x 9'3"	62 sq. ft	Yes
16	Bedroom	13'1" x 12'4"	161 sq. ft	Yes

Home data report

269 Black Hill Rd,Plainfield,CT,US

#		Dimensions	sqft	Counted as living area
17	Porch	6'5" x 5'3"	42 sq. ft	No
18	Bath	4'9" x 5'4"	25 sq. ft	Yes
19	Bath	8'7" x 10'6"	80 sq. ft	Yes
20	Hall	8'9" x 8'11"	78 sq. ft	Yes
21	Garage	43'9" x 40'0"	1359 sq. ft	No
22	Kitchen	12'6" x 17'6"	194 sq. ft	Yes
23	Dining Room	12'5" x 12'2"	152 sq. ft	Yes
24	Bath	4'9" x 7'10"	37 sq. ft	Yes
25	Breakfast Nook	8'10" x 9'1"	80 sq. ft	Yes
26	Patio	33'2" x 12'6"	383 sq. ft	No
27	Hall	12'11" x 4'8"	53 sq. ft	Yes
28	Bedroom	11'3" x 12'6"	141 sq. ft	Yes
29	Laundry	5'10" x 3'2"	19 sq. ft	Yes

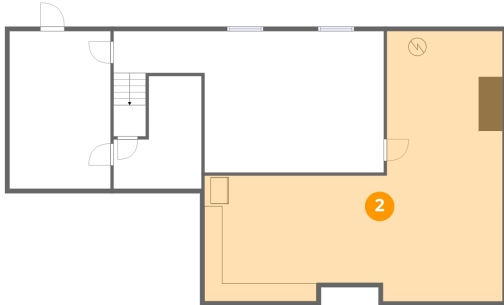
1 Floor 1 - Storage



Dimensions: 11'3" x 17'6"
Area: 197 sq. ft
Counted as living area: No

Heated: No
Finished: No
Enclosed: No
Contiguous: Yes
Permitted: Yes
Wet space: No
Addition: No
Conversion: No

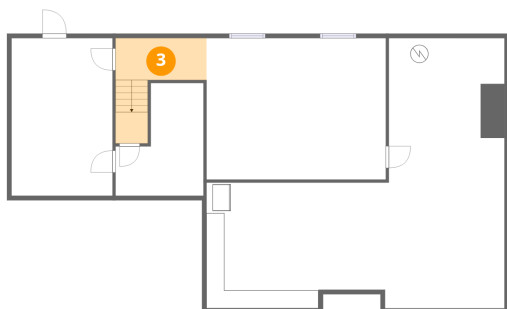
2 Floor 1 - Basement



Dimensions: 33'2" x 30'0"
Area: 654 sq. ft
Counted as living area: No

Heated: Yes
Finished: No
Enclosed: Yes
Contiguous: Yes
Permitted: Yes
Wet space: No
Addition: No
Conversion: No

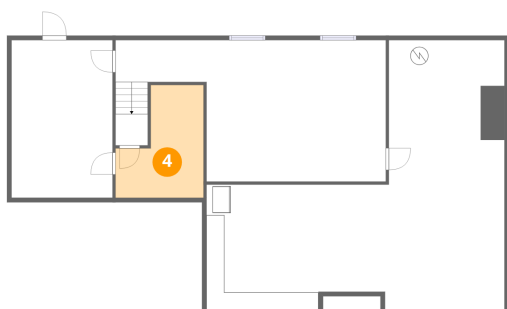
3 Floor 1 - Hall



Dimensions: 10'1" x 11'8"
Area: 72 sq. ft
Counted as living area: Yes

Heated: Yes
Finished: Yes
Enclosed: Yes
Contiguous: Yes
Permitted: Yes
Wet space: No
Addition: No
Conversion: No

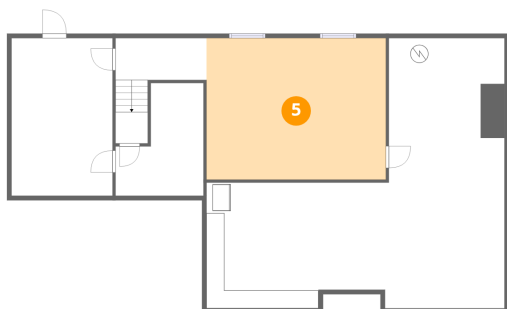
4 Floor 1 - Room



Dimensions: 9'9" x 12'6"
Area: 95 sq. ft
Counted as living area: Yes

Heated: Yes
Finished: Yes
Enclosed: Yes
Contiguous: Yes
Permitted: Yes
Wet space: No
Addition: No
Conversion: No

5 Floor 1 - Recreation Room



Dimensions: 19'11" x 15'8"
Area: 313 sq. ft
Counted as living area: Yes

Heated: Yes
Finished: Yes
Enclosed: Yes
Contiguous: Yes
Permitted: Yes
Wet space: No
Addition: No
Conversion: No

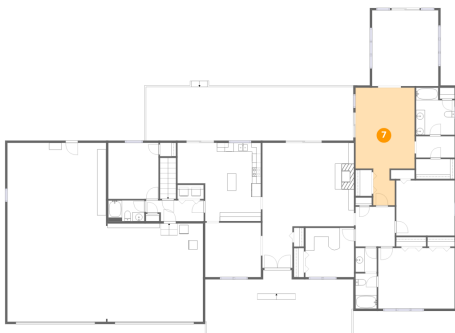
6 Floor 2 - Bedroom



Dimensions: 17'1" x 13'7"
Area: 232 sq. ft
Counted as living area: Yes

Heated: Yes
Finished: Yes
Enclosed: Yes
Contiguous: Yes
Permitted: Yes
Wet space: No
Addition: No
Conversion: No

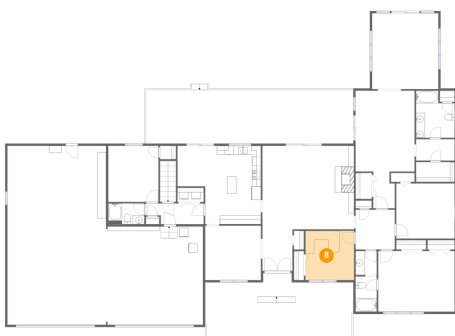
7 Floor 2 - Primary Bedroom



Dimensions: 13'2" x 26'3"
Area: 275 sq. ft
Counted as living area: Yes

Heated: Yes
Finished: Yes
Enclosed: Yes
Contiguous: Yes
Permitted: Yes
Wet space: No
Addition: No
Conversion: No

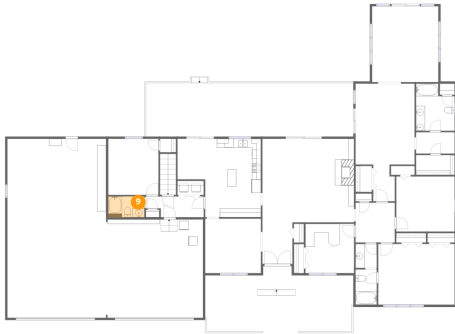
8 Floor 2 - Office



Dimensions: 10'11" x 11'0"
Area: 120 sq. ft
Counted as living area: Yes

Heated: Yes
Finished: Yes
Enclosed: Yes
Contiguous: Yes
Permitted: Yes
Wet space: No
Addition: No
Conversion: No

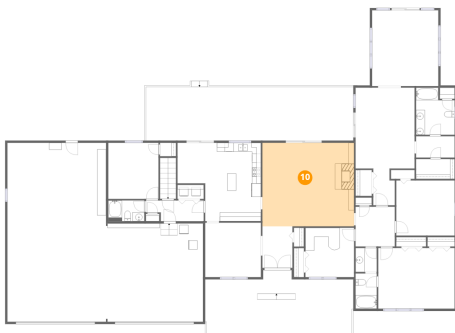
9 Floor 2 - Bath



Dimensions: 8'1" x 4'8"
Area: 37 sq. ft
Counted as living area: Yes

Heated: Yes
Finished: Yes
Enclosed: Yes
Contiguous: Yes
Permitted: Yes
Wet space: Yes
Addition: No
Conversion: No

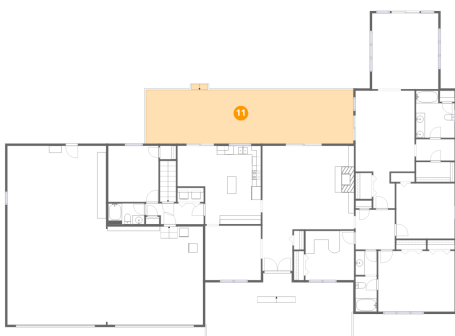
10 Floor 2 - Living Room



Dimensions: 20'6" x 18'8"
Area: 383 sq. ft
Counted as living area: Yes

Heated: Yes
Finished: Yes
Enclosed: Yes
Contiguous: Yes
Permitted: Yes
Wet space: No
Addition: No
Conversion: No

11 Floor 2 - Deck



Dimensions: 46'5" x 12'0"
Area: 561 sq. ft
Counted as living area: No

Heated: No
Finished: No
Enclosed: No
Contiguous: Yes
Permitted: Yes
Wet space: No
Addition: No
Conversion: No

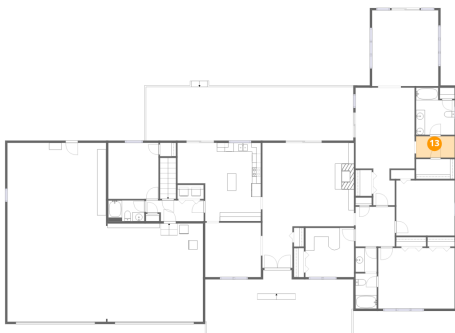
12 Floor 2 - Sun Room



Dimensions: 14'10" x 16'11"
Area: 251 sq. ft
Counted as living area: Yes

Heated: Yes
Finished: Yes
Enclosed: Yes
Contiguous: Yes
Permitted: Yes
Wet space: No
Addition: No
Conversion: No

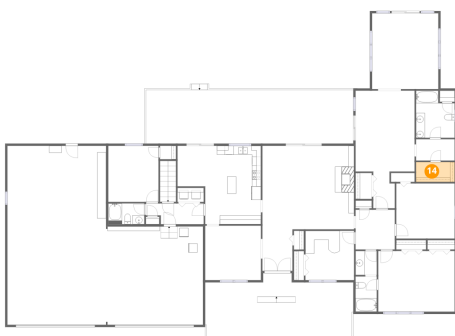
13 Floor 2 - Hall



Dimensions: 8'7" x 4'9"
Area: 41 sq. ft
Counted as living area: Yes

Heated: Yes
Finished: Yes
Enclosed: Yes
Contiguous: Yes
Permitted: Yes
Wet space: No
Addition: No
Conversion: No

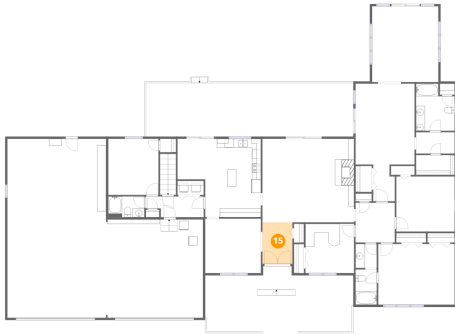
14 Floor 2 - W.I.C.



Dimensions: 8'7" x 4'5"
Area: 38 sq. ft
Counted as living area: Yes

Heated: Yes
Finished: Yes
Enclosed: Yes
Contiguous: Yes
Permitted: Yes
Wet space: No
Addition: No
Conversion: No

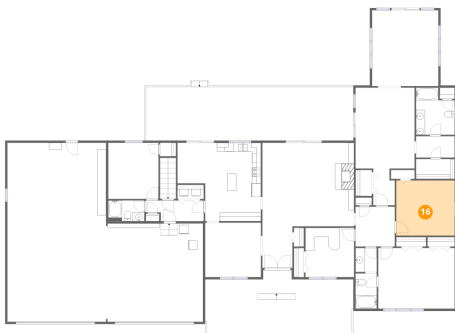
15 Floor 2 - Foyer



Dimensions: 6'9" x 9'3"
Area: 62 sq. ft
Counted as living area: Yes

Heated: Yes
Finished: Yes
Enclosed: Yes
Contiguous: Yes
Permitted: Yes
Wet space: No
Addition: No
Conversion: No

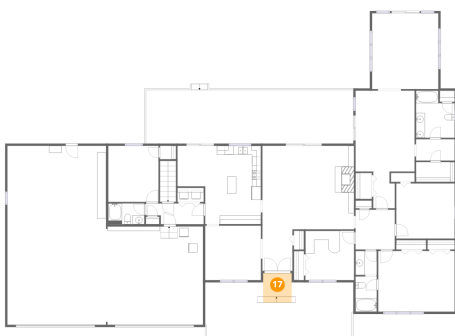
16 Floor 2 - Bedroom



Dimensions: 13'1" x 12'4"
Area: 161 sq. ft
Counted as living area: Yes

Heated: Yes
Finished: Yes
Enclosed: Yes
Contiguous: Yes
Permitted: Yes
Wet space: No
Addition: No
Conversion: No

17 Floor 2 - Porch



Dimensions: 6'5" x 5'3"
Area: 42 sq. ft
Counted as living area: No

Heated: No
Finished: No
Enclosed: No
Contiguous: Yes
Permitted: Yes
Wet space: No
Addition: No
Conversion: No

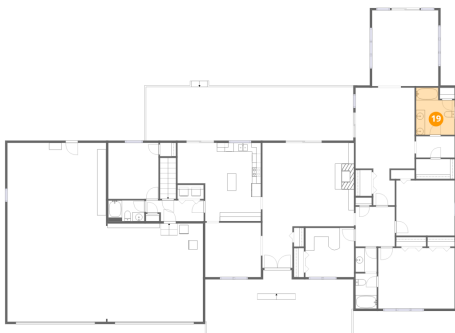
18 Floor 2 - Bath



Dimensions: 4'9" x 5'4"
Area: 25 sq. ft
Counted as living area: Yes

Heated: Yes
Finished: Yes
Enclosed: Yes
Contiguous: Yes
Permitted: Yes
Wet space: Yes
Addition: No
Conversion: No

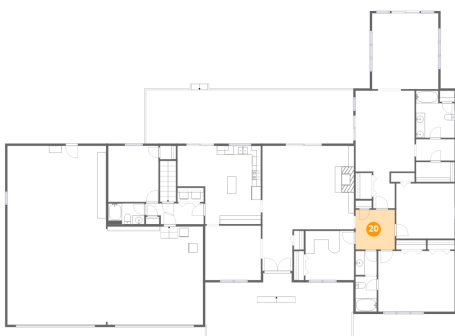
19 Floor 2 - Bath



Dimensions: 8'7" x 10'6"
Area: 80 sq. ft
Counted as living area: Yes

Heated: Yes
Finished: Yes
Enclosed: Yes
Contiguous: Yes
Permitted: Yes
Wet space: Yes
Addition: No
Conversion: No

20 Floor 2 - Hall



Dimensions: 8'9" x 8'11"
Area: 78 sq. ft
Counted as living area: Yes

Heated: Yes
Finished: Yes
Enclosed: Yes
Contiguous: Yes
Permitted: Yes
Wet space: No
Addition: No
Conversion: No

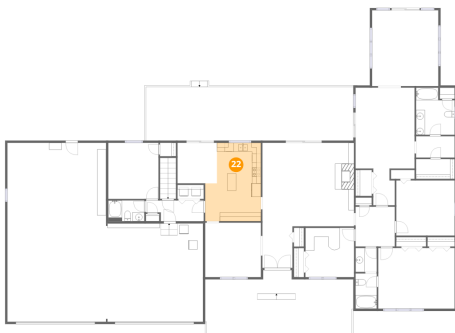
21 Floor 2 - Garage



Dimensions: 43'9" x 40'0"
Area: 1359 sq. ft
Counted as living area: No

Heated: No
Finished: No
Enclosed: Yes
Contiguous: Yes
Permitted: Yes
Wet space: No
Addition: No
Conversion: No

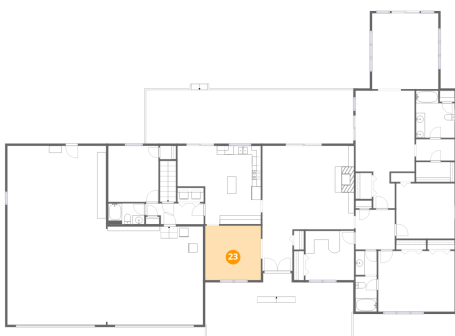
22 Floor 2 - Kitchen



Dimensions: 12'6" x 17'6"
Area: 194 sq. ft
Counted as living area: Yes

Heated: Yes
Finished: Yes
Enclosed: Yes
Contiguous: Yes
Permitted: Yes
Wet space: No
Addition: No
Conversion: No

23 Floor 2 - Dining Room



Dimensions: 12'5" x 12'2"
Area: 152 sq. ft
Counted as living area: Yes

Heated: Yes
Finished: Yes
Enclosed: Yes
Contiguous: Yes
Permitted: Yes
Wet space: No
Addition: No
Conversion: No

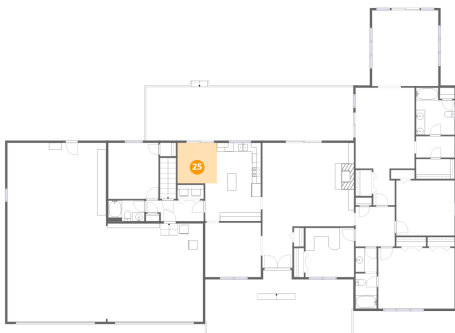
24 Floor 2 - Bath



Dimensions: 4'9" x 7'10"
Area: 37 sq. ft
Counted as living area: Yes

Heated: Yes
Finished: Yes
Enclosed: Yes
Contiguous: Yes
Permitted: Yes
Wet space: Yes
Addition: No
Conversion: No

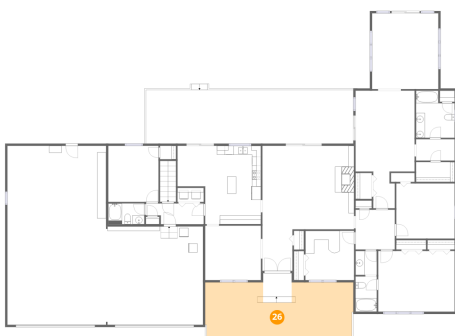
25 Floor 2 - Breakfast Nook



Dimensions: 8'10" x 9'1"
Area: 80 sq. ft
Counted as living area: Yes

Heated: Yes
Finished: Yes
Enclosed: Yes
Contiguous: Yes
Permitted: Yes
Wet space: No
Addition: No
Conversion: No

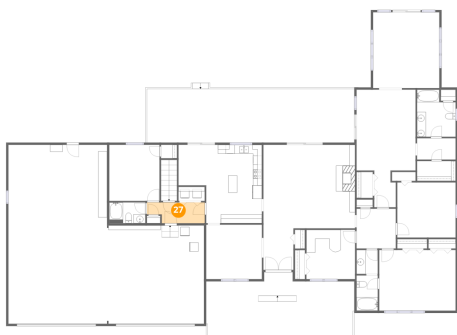
26 Floor 2 - Patio



Dimensions: 33'2" x 12'6"
Area: 383 sq. ft
Counted as living area: No

Heated: No
Finished: No
Enclosed: No
Contiguous: Yes
Permitted: Yes
Wet space: No
Addition: No
Conversion: No

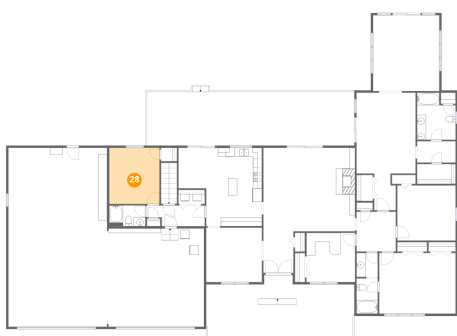
27 Floor 2 - Hall



Dimensions: 12'11" x 4'8"
Area: 53 sq. ft
Counted as living area: Yes

Heated: Yes
Finished: Yes
Enclosed: Yes
Contiguous: Yes
Permitted: Yes
Wet space: No
Addition: No
Conversion: No

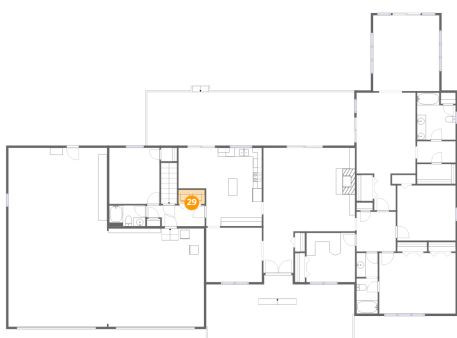
28 Floor 2 - Bedroom



Dimensions: 11'3" x 12'6"
Area: 141 sq. ft
Counted as living area: Yes

Heated: Yes
Finished: Yes
Enclosed: Yes
Contiguous: Yes
Permitted: Yes
Wet space: No
Addition: No
Conversion: No

29 Floor 2 - Laundry



Dimensions: 5'10" x 3'2"
Area: 19 sq. ft
Counted as living area: Yes

Heated: Yes
Finished: Yes
Enclosed: Yes
Contiguous: Yes
Permitted: Yes
Wet space: No
Addition: No
Conversion: No