

Home data report

3728 Superior St, Munhall, PA, US




Total Area: 1501 sq. ft

Basement: 212 sq. ft, 1st Floor: 694 sq. ft, 2nd Floor: 595 sq. ft

Excluded: Basement 544 sq. ft, Undefined 18 sq. ft, Deck 147 sq. ft, Patio 81 sq. ft, Porch 171 sq. ft, Covered patio 105 sq. ft, Walls: 167 sq. ft

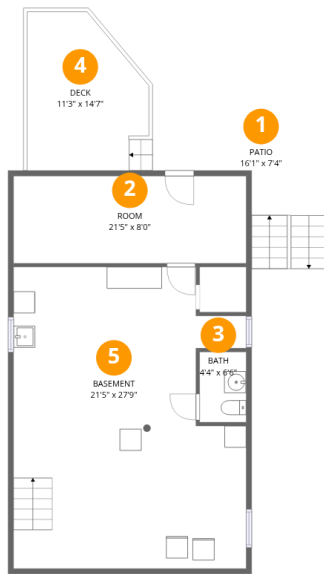
Property summary

 **3** Floors

 **2** Bedrooms

 **1** Bathrooms

 **1** Half baths



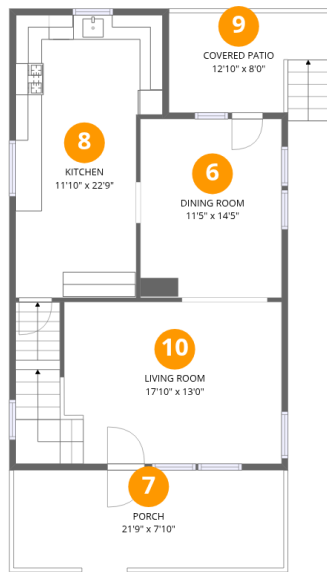
Room dimensions

Floor 1 Below grade

Total: 212 sqft

Excluded: 790 sqft

#		Dimensions	sqft	Counted as living area
1	Patio	16'1" x 7'4"	117 sq. ft	No
2	Room	21'5" x 8'0"	172 sq. ft	Yes
3	Bath	4'4" x 6'6"	28 sq. ft	Yes
4	Deck	11'3" x 14'7"	164 sq. ft	No
5	Basement	21'5" x 27'9"	595 sq. ft	No



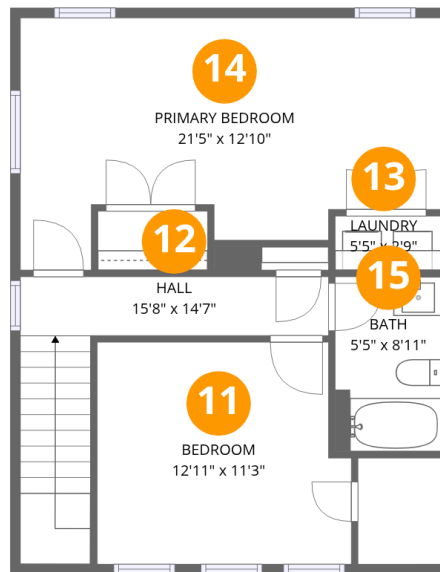
Room dimensions

Floor 2

Total:694sqft

Excluded: 276sqft

#		Dimensions	sqft	Counted as living area
6	Dining Room	11'5" x 14'5"	164 sq. ft	Yes
7	Porch	21'9" x 7'10"	171 sq. ft	No
8	Kitchen	11'10" x 22'9"	270 sq. ft	Yes
9	Covered Patio	12'10" x 8'0"	103 sq. ft	No
10	Living Room	17'10" x 13'0"	232 sq. ft	Yes



Room dimensions

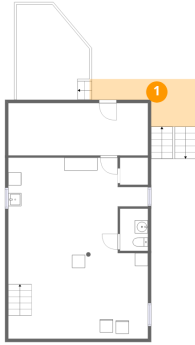
Floor 3

Total: 595 sqft

Excluded: 0 sqft

#		Dimensions	sqft	Counted as living area
11	Bedroom	12'11" x 11'3"	146 sq. ft	Yes
12	Hall	15'8" x 14'7"	229 sq. ft	Yes
13	Laundry	5'5" x 2'9"	15 sq. ft	Yes
14	Primary Bedroom	21'5" x 12'10"	274 sq. ft	Yes
15	Bath	5'5" x 8'11"	48 sq. ft	Yes

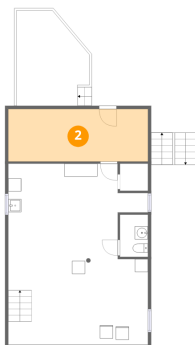
1 Floor 1 - Patio



Dimensions: 16'1" x 7'4"
Area: 117 sq. ft
Counted as living area: No

Heated: No
Finished: No
Enclosed: No
Contiguous: Yes
Permitted: Yes
Wet space: No
Addition: No
Conversion: No

2 Floor 1 - Room



Dimensions: 21'5" x 8'0"
Area: 172 sq. ft
Counted as living area: No

Heated: Yes
Finished: Yes
Enclosed: Yes
Contiguous: No
Permitted: Yes
Wet space: No
Addition: No
Conversion: No

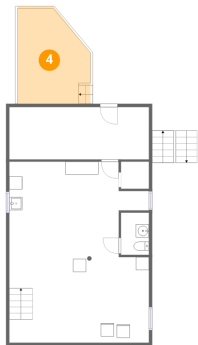
3 Floor 1 - Bath



Dimensions: 4'4" x 6'6"
Area: 28 sq. ft
Counted as living area: No

Heated: Yes
Finished: Yes
Enclosed: Yes
Contiguous: No
Permitted: Yes
Wet space: Yes
Addition: No
Conversion: No

4 Floor 1 - Deck



Dimensions: 11'3" x 14'7"
Area: 164 sq. ft
Counted as living area: No

Heated: No
Finished: No
Enclosed: No
Contiguous: Yes
Permitted: Yes
Wet space: No
Addition: No
Conversion: No

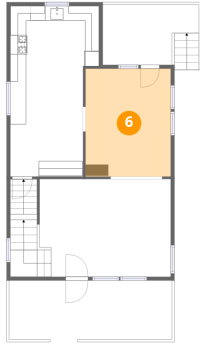
5 Floor 1 - Basement



Dimensions: 21'5" x 27'9"
Area: 595 sq. ft
Counted as living area: No

Heated: Yes
Finished: No
Enclosed: Yes
Contiguous: Yes
Permitted: Yes
Wet space: No
Addition: No
Conversion: No

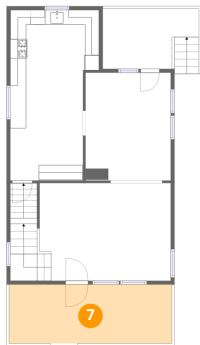
6 Floor 2 - Dining Room



Dimensions: 11'5" x 14'5"
Area: 164 sq. ft
Counted as living area: Yes

Heated: Yes
Finished: Yes
Enclosed: Yes
Contiguous: Yes
Permitted: Yes
Wet space: No
Addition: No
Conversion: No

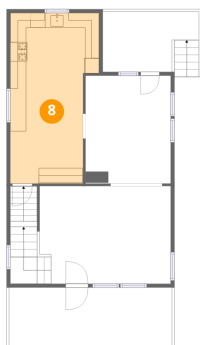
7 Floor 2 - Porch



Dimensions: 21'9" x 7'10"
Area: 171 sq. ft
Counted as living area: No

Heated: No
Finished: No
Enclosed: No
Contiguous: Yes
Permitted: Yes
Wet space: No
Addition: No
Conversion: No

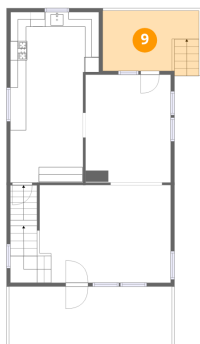
8 Floor 2 - Kitchen



Dimensions: 11'10" x 22'9"
Area: 270 sq. ft
Counted as living area: Yes

Heated: Yes
Finished: Yes
Enclosed: Yes
Contiguous: Yes
Permitted: Yes
Wet space: No
Addition: No
Conversion: No

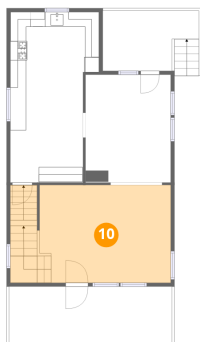
9 Floor 2 - Covered Patio



Dimensions: 12'10" x 8'0"
Area: 103 sq. ft
Counted as living area: No

Heated: No
Finished: No
Enclosed: No
Contiguous: Yes
Permitted: Yes
Wet space: No
Addition: No
Conversion: No

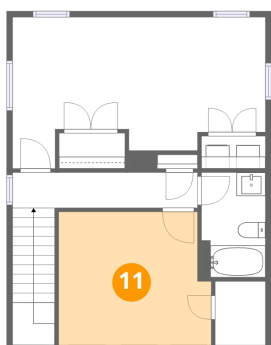
10 Floor 2 - Living Room



Dimensions: 17'10" x 13'0"
Area: 232 sq. ft
Counted as living area: Yes

Heated: Yes
Finished: Yes
Enclosed: Yes
Contiguous: Yes
Permitted: Yes
Wet space: No
Addition: No
Conversion: No

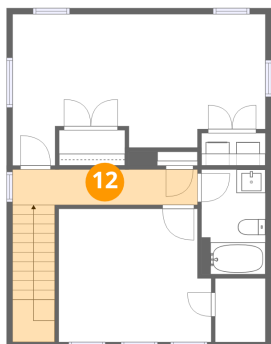
11 Floor 3 - Bedroom



Dimensions: 12'11" x 11'3"
Area: 146 sq. ft
Counted as living area: Yes

Heated: Yes
Finished: Yes
Enclosed: Yes
Contiguous: Yes
Permitted: Yes
Wet space: No
Addition: No
Conversion: No

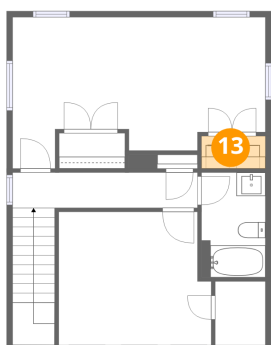
12 Floor 3 - Hall



Dimensions: 15'8" x 14'7"
Area: 229 sq. ft
Counted as living area: Yes

Heated: Yes
Finished: Yes
Enclosed: Yes
Contiguous: Yes
Permitted: Yes
Wet space: No
Addition: No
Conversion: No

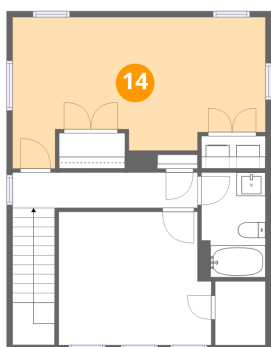
13 Floor 3 - Laundry



Dimensions: 5'5" x 2'9"
Area: 15 sq. ft
Counted as living area: Yes

Heated: Yes
Finished: Yes
Enclosed: Yes
Contiguous: Yes
Permitted: Yes
Wet space: No
Addition: No
Conversion: No

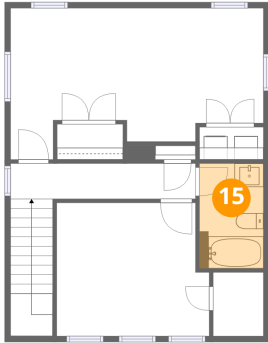
14 Floor 3 - Primary Bedroom



Dimensions: 21'5" x 12'10"
Area: 274 sq. ft
Counted as living area: Yes

Heated: Yes
Finished: Yes
Enclosed: Yes
Contiguous: Yes
Permitted: Yes
Wet space: No
Addition: No
Conversion: No

15 Floor 3 - Bath



Dimensions: 5'5" x 8'11"
Area: 48 sq. ft
Counted as living area: Yes

Heated: Yes
Finished: Yes
Enclosed: Yes
Contiguous: Yes
Permitted: Yes
Wet space: Yes
Addition: No
Conversion: No