

Home data report

7633 Deer Branch Road, Tinker Knoll, Hollins, Roanoke,
Roanoke County, Virginia, United States, 24019



Total Area: 2919 sq. ft

Basement: 1223 sq. ft, 1st Floor: 1696 sq. ft

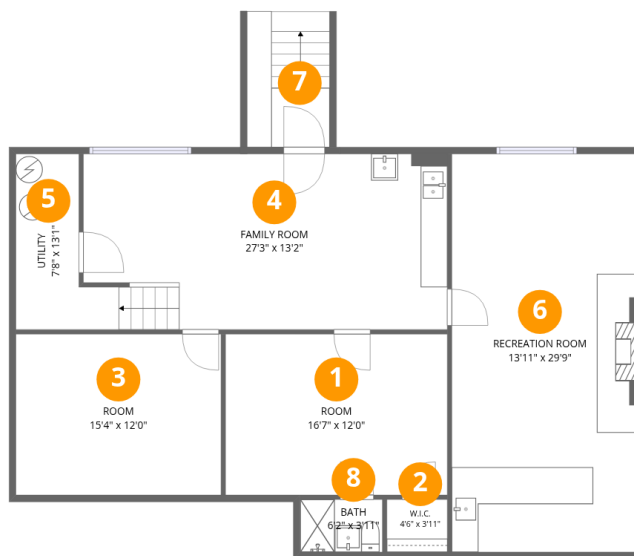
Excluded: Utility 71 sq. ft, Screened porch 140 sq. ft, Porch 77 sq. ft, Deck 67 sq. ft, Patio 243 sq. ft, Carport 389 sq. ft, Walls: 217 sq. ft

Property summary



Home data report

7633 Deer Branch Road, Tinker Knoll, Hollins, Roanoke,
Roanoke County, Virginia, United States, 24019



Room dimensions

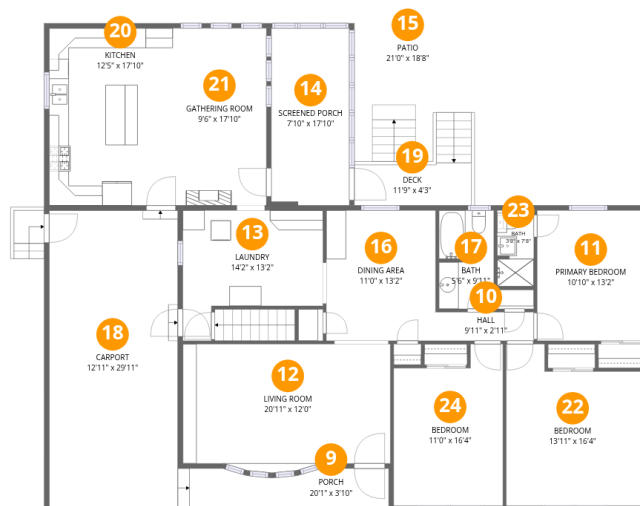
Floor 1 Below grade

Total:1223sqft Excluded: 71sqft

#		Dimensions	sqft	Counted as living area
1	Room	16'7" x 12'0"	200 sq. ft	Yes
2	W.I.C.	4'6" x 3'11"	18 sq. ft	Yes
3	Room	15'4" x 12'0"	185 sq. ft	Yes
4	Family Room	27'3" x 13'2"	348 sq. ft	Yes
5	Utility	7'8" x 13'1"	71 sq. ft	No
6	Recreation Room	13'11" x 29'9"	415 sq. ft	Yes
7	Outdoor	4'4" x 4'5"	19 sq. ft	No
8	Bath	6'2" x 3'11"	24 sq. ft	Yes

Home data report

7633 Deer Branch Road, Tinker Knoll, Hollins, Roanoke,
Roanoke County, Virginia, United States, 24019



Room dimensions

Floor 2

Total:1696sqft

Excluded: 916sqft

#		Dimensions	sqft	Counted as living area
9	Porch	20'1" x 3'10"	77 sq. ft	No
10	Hall	9'11" x 2'11"	29 sq. ft	Yes
11	Primary Bedroom	10'10" x 13'2"	142 sq. ft	Yes
12	Living Room	20'11" x 12'0"	258 sq. ft	Yes
13	Laundry	14'2" x 13'2"	146 sq. ft	Yes
14	Screened Porch	7'10" x 17'10"	140 sq. ft	No
15	Patio	21'0" x 18'8"	243 sq. ft	No
16	Dining Area	11'0" x 13'2"	145 sq. ft	Yes
17	Bath	5'6" x 9'11"	54 sq. ft	Yes
18	Carport	12'11" x 29'11"	389 sq. ft	No
19	Deck	11'9" x 4'3"	67 sq. ft	No

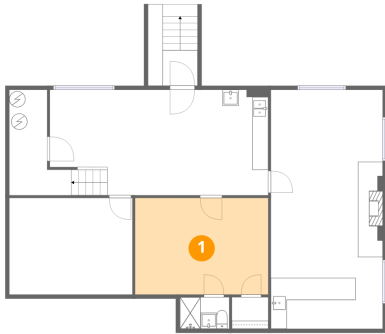
Home data report

**7633 Deer Branch Road, Tinker Knoll, Hollins, Roanoke,
Roanoke County, Virginia, United States, 24019**

#		Dimensions	sqft	Counted as living area
20	Kitchen	12'5" x 17'10"	222 sq. ft	Yes
21	Gathering Room	9'6" x 17'10"	169 sq. ft	Yes
22	Bedroom	13'11" x 16'4"	199 sq. ft	Yes
23	Bath	3'8" x 7'8"	28 sq. ft	Yes
24	Bedroom	11'0" x 16'4"	161 sq. ft	Yes

7633 Deer Branch Road, Tinker Knoll, Hollins, Roanoke,
Roanoke County, Virginia, United States, 24019

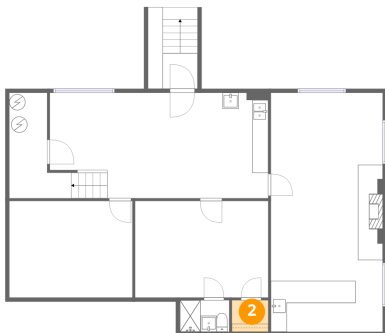
1 Floor 1 - Room



Dimensions: 16'7" x 12'0"
Area: 200 sq. ft
Counted as living area: Yes

Heated: Yes
Finished: Yes
Enclosed: Yes
Contiguous: Yes
Permitted: Yes
Wet space: No
Addition: No
Conversion: No

2 Floor 1 - W.I.C.

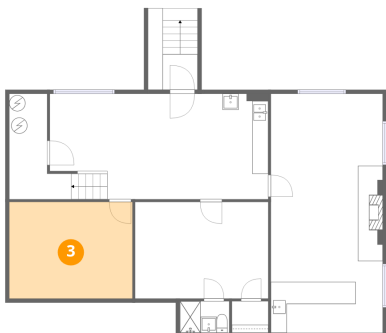


Dimensions: 4'6" x 3'11"
Area: 18 sq. ft
Counted as living area: Yes

Heated: Yes
Finished: Yes
Enclosed: Yes
Contiguous: Yes
Permitted: Yes
Wet space: No
Addition: No
Conversion: No

7633 Deer Branch Road, Tinker Knoll, Hollins, Roanoke,
Roanoke County, Virginia, United States, 24019

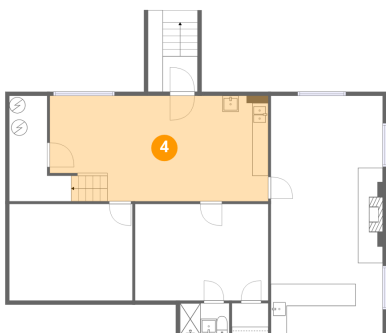
3 Floor 1 - Room



Dimensions: 15'4" x 12'0"
Area: 185 sq. ft
Counted as living area: Yes

Heated: Yes
Finished: Yes
Enclosed: Yes
Contiguous: Yes
Permitted: Yes
Wet space: No
Addition: No
Conversion: No

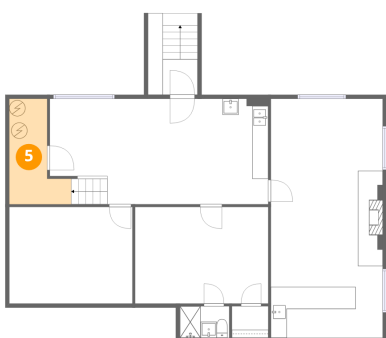
4 Floor 1 - Family Room



Dimensions: 27'3" x 13'2"
Area: 348 sq. ft
Counted as living area: Yes

Heated: Yes
Finished: Yes
Enclosed: Yes
Contiguous: Yes
Permitted: Yes
Wet space: No
Addition: No
Conversion: No

5 Floor 1 - Utility

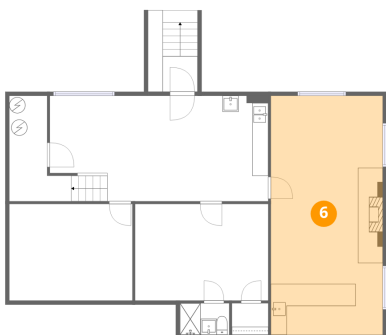


Dimensions: 7'8" x 13'1"
Area: 71 sq. ft
Counted as living area: No

Heated: Yes
Finished: No
Enclosed: Yes
Contiguous: Yes
Permitted: Yes
Wet space: No
Addition: No
Conversion: No

7633 Deer Branch Road, Tinker Knoll, Hollins, Roanoke,
Roanoke County, Virginia, United States, 24019

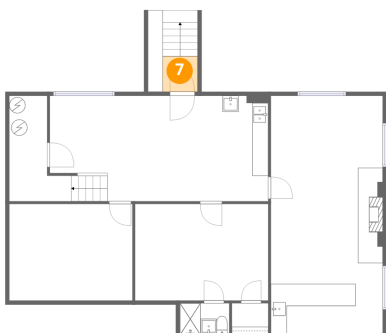
6 Floor 1 - Recreation Room



Dimensions: 13'11" x 29'9"
Area: 415 sq. ft
Counted as living area: Yes

Heated: Yes
Finished: Yes
Enclosed: Yes
Contiguous: Yes
Permitted: Yes
Wet space: No
Addition: No
Conversion: No

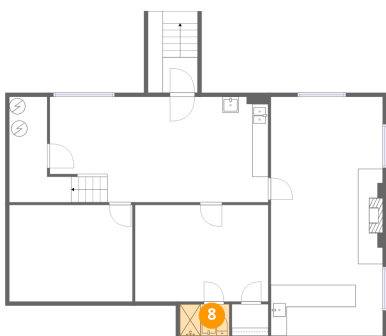
7 Floor 1 - Outdoor



Dimensions: 4'4" x 4'5"
Area: 19 sq. ft
Counted as living area: No

Heated: No
Finished: No
Enclosed: No
Contiguous: Yes
Permitted: No
Wet space: No
Addition: No
Conversion: No

8 Floor 1 - Bath



Dimensions: 6'2" x 3'11"
Area: 24 sq. ft
Counted as living area: Yes

Heated: Yes
Finished: Yes
Enclosed: Yes
Contiguous: Yes
Permitted: Yes
Wet space: Yes
Addition: No
Conversion: No

7633 Deer Branch Road, Tinker Knoll, Hollins, Roanoke,
Roanoke County, Virginia, United States, 24019

9 Floor 2 - Porch



Dimensions: 20'1" x 3'10"
Area: 77 sq. ft
Counted as living area: No

Heated: No
Finished: No
Enclosed: No
Contiguous: Yes
Permitted: Yes
Wet space: No
Addition: No
Conversion: No

10 Floor 2 - Hall



Dimensions: 9'11" x 2'11"
Area: 29 sq. ft
Counted as living area: Yes

Heated: Yes
Finished: Yes
Enclosed: Yes
Contiguous: Yes
Permitted: Yes
Wet space: No
Addition: No
Conversion: No

11 Floor 2 - Primary Bedroom



Dimensions: 10'10" x 13'2"
Area: 142 sq. ft
Counted as living area: Yes

Heated: Yes
Finished: Yes
Enclosed: Yes
Contiguous: Yes
Permitted: Yes
Wet space: No
Addition: No
Conversion: No

7633 Deer Branch Road, Tinker Knoll, Hollins, Roanoke,
Roanoke County, Virginia, United States, 24019

12 Floor 2 - Living Room



Dimensions: 20'11" x 12'0"
Area: 258 sq. ft
Counted as living area: Yes

Heated: Yes
Finished: Yes
Enclosed: Yes
Contiguous: Yes
Permitted: Yes
Wet space: No
Addition: No
Conversion: No

13 Floor 2 - Laundry



Dimensions: 14'2" x 13'2"
Area: 146 sq. ft
Counted as living area: Yes

Heated: Yes
Finished: Yes
Enclosed: Yes
Contiguous: Yes
Permitted: Yes
Wet space: No
Addition: No
Conversion: No

14 Floor 2 - Screened Porch



Dimensions: 7'10" x 17'10"
Area: 140 sq. ft
Counted as living area: No

Heated: No
Finished: No
Enclosed: No
Contiguous: Yes
Permitted: Yes
Wet space: No
Addition: No
Conversion: No

7633 Deer Branch Road, Tinker Knoll, Hollins, Roanoke,
Roanoke County, Virginia, United States, 24019

15 Floor 2 - Patio



Dimensions: 21'0" x 18'8"
Area: 243 sq. ft
Counted as living area: No

Heated: No
Finished: No
Enclosed: No
Contiguous: Yes
Permitted: Yes
Wet space: No
Addition: No
Conversion: No

16 Floor 2 - Dining Area



Dimensions: 11'0" x 13'2"
Area: 145 sq. ft
Counted as living area: Yes

Heated: Yes
Finished: Yes
Enclosed: Yes
Contiguous: Yes
Permitted: Yes
Wet space: No
Addition: No
Conversion: No

17 Floor 2 - Bath



Dimensions: 5'6" x 9'11"
Area: 54 sq. ft
Counted as living area: Yes

Heated: Yes
Finished: Yes
Enclosed: Yes
Contiguous: Yes
Permitted: Yes
Wet space: Yes
Addition: No
Conversion: No

7633 Deer Branch Road, Tinker Knoll, Hollins, Roanoke,
Roanoke County, Virginia, United States, 24019

18 Floor 2 - Carport



Dimensions: 12'11" x 29'11"
Area: 389 sq. ft
Counted as living area: No

Heated: No
Finished: Yes
Enclosed: No
Contiguous: Yes
Permitted: Yes
Wet space: No
Addition: No
Conversion: No

19 Floor 2 - Deck



Dimensions: 11'9" x 4'3"
Area: 67 sq. ft
Counted as living area: No

Heated: No
Finished: No
Enclosed: No
Contiguous: Yes
Permitted: Yes
Wet space: No
Addition: No
Conversion: No

20 Floor 2 - Kitchen



Dimensions: 12'5" x 17'10"
Area: 222 sq. ft
Counted as living area: Yes

Heated: Yes
Finished: Yes
Enclosed: Yes
Contiguous: Yes
Permitted: Yes
Wet space: No
Addition: No
Conversion: No

7633 Deer Branch Road, Tinker Knoll, Hollins, Roanoke,
Roanoke County, Virginia, United States, 24019

21 Floor 2 - Gathering Room



Dimensions: 9'6" x 17'10"
Area: 169 sq. ft
Counted as living area: Yes

Heated: Yes
Finished: Yes
Enclosed: Yes
Contiguous: Yes
Permitted: Yes
Wet space: No
Addition: No
Conversion: No

22 Floor 2 - Bedroom



Dimensions: 13'11" x 16'4"
Area: 199 sq. ft
Counted as living area: Yes

Heated: Yes
Finished: Yes
Enclosed: Yes
Contiguous: Yes
Permitted: Yes
Wet space: No
Addition: No
Conversion: No

23 Floor 2 - Bath

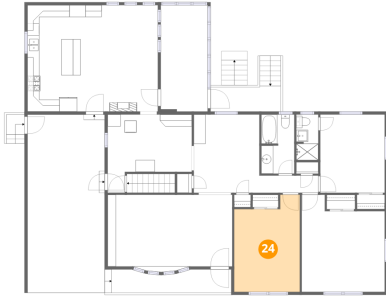


Dimensions: 3'8" x 7'8"
Area: 28 sq. ft
Counted as living area: Yes

Heated: Yes
Finished: Yes
Enclosed: Yes
Contiguous: Yes
Permitted: Yes
Wet space: Yes
Addition: No
Conversion: No

7633 Deer Branch Road, Tinker Knoll, Hollins, Roanoke,
Roanoke County, Virginia, United States, 24019

24 Floor 2 - Bedroom



Dimensions: 11'0" x 16'4"
Area: 161 sq. ft
Counted as living area: Yes

Heated: Yes
Finished: Yes
Enclosed: Yes
Contiguous: Yes
Permitted: Yes
Wet space: No
Addition: No
Conversion: No