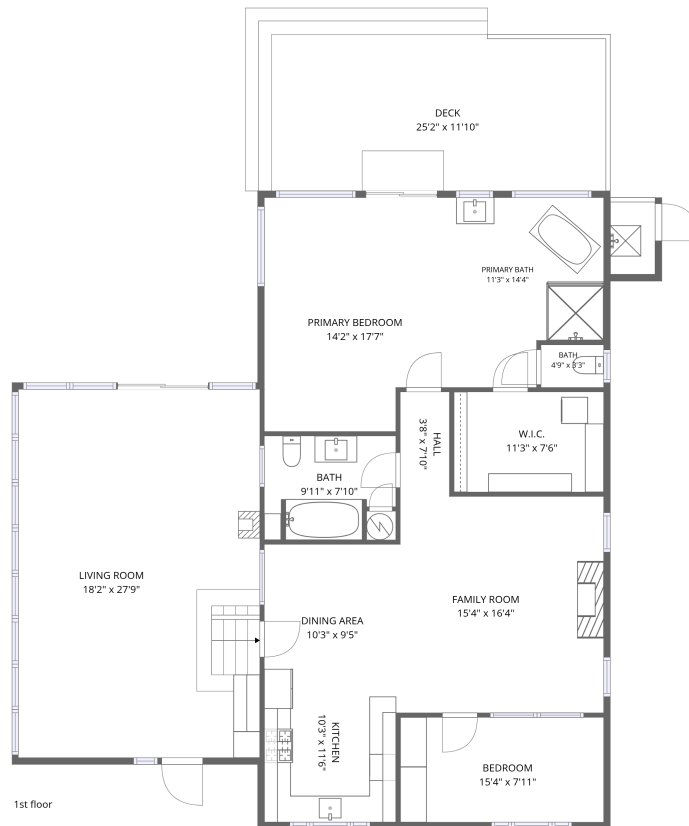


Home data report

349 North End Blvd, Salisbury, MA, US




**Total Area: 1716 sq. ft**

1st Floor: 1716 sq. ft

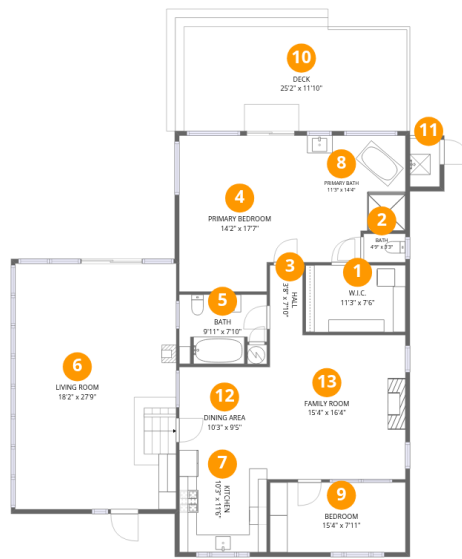
Excluded: Deck 295 sq. ft, Walls: 91 sq. ft

## Property summary

 **1** Floors

 **2** Bedrooms

 **2** Bathrooms



## Room dimensions

Floor 1

Total:1716sqft

Excluded: 295sqft

#		Dimensions	sqft	Counted as living area
1	W.I.C.	11'3" x 7'6"	85 sq. ft	Yes
2	Bath	4'9" x 3'3"	15 sq. ft	Yes
3	Hall	3'8" x 7'10"	29 sq. ft	Yes
4	Primary Bedroom	14'2" x 17'7"	237 sq. ft	Yes
5	Bath	9'11" x 7'10"	70 sq. ft	Yes
6	Living Room	18'2" x 27'9"	505 sq. ft	Yes
7	Kitchen	10'3" x 11'6"	115 sq. ft	Yes
8	Primary Bath	11'3" x 14'4"	143 sq. ft	Yes
9	Bedroom	15'4" x 7'11"	121 sq. ft	Yes
10	Deck	25'2" x 11'10"	295 sq. ft	No
11	Shower	3'5" x 5'5"	20 sq. ft	No

Home data report

**349 North End Blvd,Salisbury,MA,US**

#		Dimensions	sqft	Counted as living area
12	Dining Area	10'3" x 9'5"	96 sq. ft	Yes
13	Family Room	15'4" x 16'4"	250 sq. ft	Yes

**1** Floor 1 - W.I.C.

---

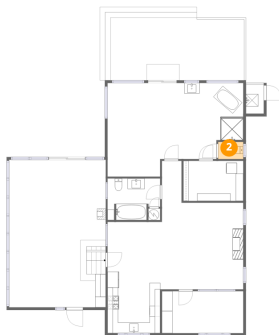


**Dimensions:** 11'3" x 7'6"  
**Area:** 85 sq. ft  
**Counted as living area:** Yes

**Heated:** Yes  
**Finished:** Yes  
**Enclosed:** Yes  
**Contiguous:** Yes  
**Permitted:** Yes  
**Wet space:** No  
**Addition:** No  
**Conversion:** No

**2** Floor 1 - Bath

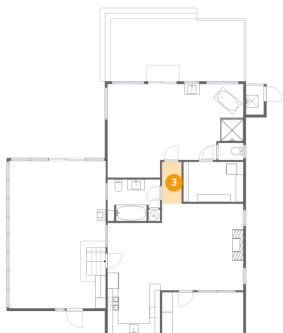
---



**Dimensions:** 4'9" x 3'3"  
**Area:** 15 sq. ft  
**Counted as living area:** Yes

**Heated:** Yes  
**Finished:** Yes  
**Enclosed:** Yes  
**Contiguous:** Yes  
**Permitted:** Yes  
**Wet space:** Yes  
**Addition:** No  
**Conversion:** No

### 3 Floor 1 - Hall



Dimensions: 3'8" x 7'10"  
Area: 29 sq. ft  
Counted as living area: Yes

Heated: Yes  
Finished: Yes  
Enclosed: Yes  
Contiguous: Yes  
Permitted: Yes  
Wet space: No  
Addition: No  
Conversion: No

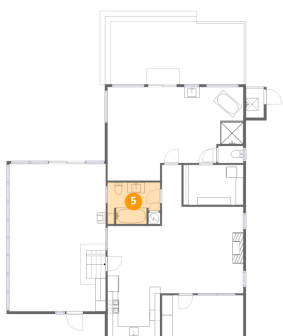
### 4 Floor 1 - Primary Bedroom



Dimensions: 14'2" x 17'7"  
Area: 237 sq. ft  
Counted as living area: Yes

Heated: Yes  
Finished: Yes  
Enclosed: Yes  
Contiguous: Yes  
Permitted: Yes  
Wet space: No  
Addition: No  
Conversion: No

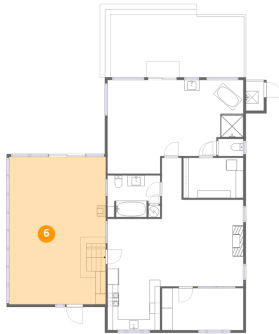
### 5 Floor 1 - Bath



Dimensions: 9'11" x 7'10"  
Area: 70 sq. ft  
Counted as living area: Yes

Heated: Yes  
Finished: Yes  
Enclosed: Yes  
Contiguous: Yes  
Permitted: Yes  
Wet space: Yes  
Addition: No  
Conversion: No

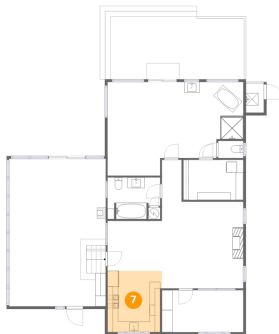
## 6 Floor 1 - Living Room



Dimensions: 18'2" x 27'9"  
Area: 505 sq. ft  
Counted as living area: Yes

Heated: Yes  
Finished: Yes  
Enclosed: Yes  
Contiguous: Yes  
Permitted: Yes  
Wet space: No  
Addition: No  
Conversion: No

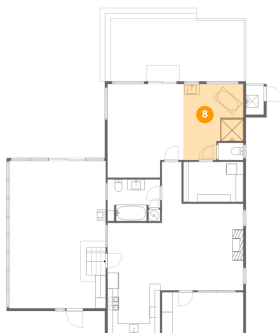
## 7 Floor 1 - Kitchen



Dimensions: 10'3" x 11'6"  
Area: 115 sq. ft  
Counted as living area: Yes

Heated: Yes  
Finished: Yes  
Enclosed: Yes  
Contiguous: Yes  
Permitted: Yes  
Wet space: No  
Addition: No  
Conversion: No

## 8 Floor 1 - Primary Bath



Dimensions: 11'3" x 14'4"  
Area: 143 sq. ft  
Counted as living area: Yes

Heated: Yes  
Finished: Yes  
Enclosed: Yes  
Contiguous: Yes  
Permitted: Yes  
Wet space: Yes  
Addition: No  
Conversion: No

## 9 Floor 1 - Bedroom



Dimensions: 15'4" x 7'11"  
Area: 121 sq. ft  
Counted as living area: Yes

Heated: Yes  
Finished: Yes  
Enclosed: Yes  
Contiguous: Yes  
Permitted: Yes  
Wet space: No  
Addition: No  
Conversion: No

## 10 Floor 1 - Deck



Dimensions: 25'2" x 11'10"  
Area: 295 sq. ft  
Counted as living area: No

Heated: No  
Finished: No  
Enclosed: No  
Contiguous: Yes  
Permitted: Yes  
Wet space: No  
Addition: No  
Conversion: No

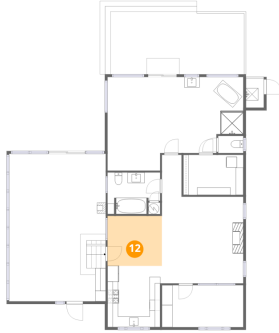
## 11 Floor 1 - Shower



Dimensions: 3'5" x 5'5"  
Area: 20 sq. ft  
Counted as living area: No

Heated: No  
Finished: No  
Enclosed: No  
Contiguous: Yes  
Permitted: No  
Wet space: No  
Addition: No  
Conversion: No

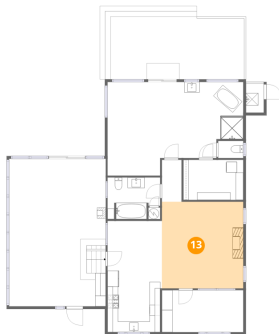
## 12 Floor 1 - Dining Area



Dimensions: 10'3" x 9'5"  
Area: 96 sq. ft  
Counted as living area: Yes

Heated: Yes  
Finished: Yes  
Enclosed: Yes  
Contiguous: Yes  
Permitted: Yes  
Wet space: No  
Addition: No  
Conversion: No

## 13 Floor 1 - Family Room



Dimensions: 15'4" x 16'4"  
Area: 250 sq. ft  
Counted as living area: Yes

Heated: Yes  
Finished: Yes  
Enclosed: Yes  
Contiguous: Yes  
Permitted: Yes  
Wet space: No  
Addition: No  
Conversion: No