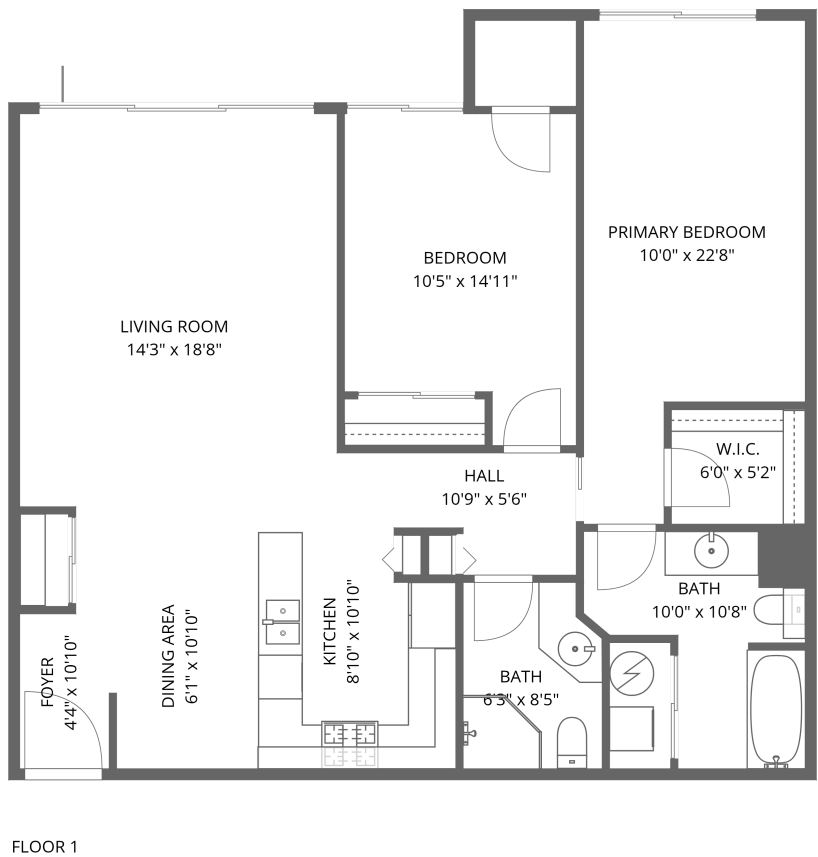


Home data report

1111 Burlington Avenue, Lisle, DuPage County, Illinois, United States, 60532, 207




Total Area: 1107 sq. ft

Floor 1: 1107 sq. ft

Excluded: Walls: 0 sq. ft

Property summary

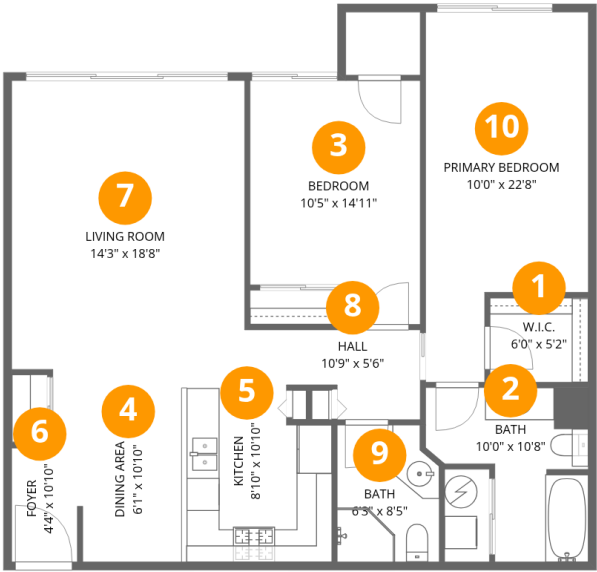
 1 Floors

 2 Bedrooms

 2 Bathrooms

Home data report

1111 Burlington Avenue, Lisle, DuPage County, Illinois, United States, 60532, 207



Room dimensions

Floor 1 Total:1107sqft Excluded: 0sqft

#		Dimensions	sqft	Counted as living area
1	W.I.C.	6'0" x 5'2"	31 sq. ft	Yes
2	Bath	10'0" x 10'8"	80 sq. ft	Yes
3	Bedroom	10'5" x 14'11"	140 sq. ft	Yes
4	Dining Area	6'1" x 10'10"	66 sq. ft	Yes
5	Kitchen	8'10" x 10'10"	93 sq. ft	Yes
6	Foyer	4'4" x 10'10"	36 sq. ft	Yes
7	Living Room	14'3" x 18'8"	264 sq. ft	Yes
8	Hall	10'9" x 5'6"	47 sq. ft	Yes
9	Bath	6'3" x 8'5"	50 sq. ft	Yes
10	Primary Bedroom	10'0" x 22'8"	192 sq. ft	Yes

1111 Burlington Avenue, Lisle, DuPage County, Illinois, United States, 60532, 207

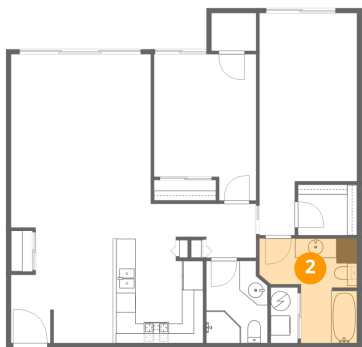
1 Floor 1 - W.I.C.



Dimensions: 6'0" x 5'2"
Area: 31 sq. ft
Counted as living area: Yes

Heated: Yes
Finished: Yes
Enclosed: Yes
Contiguous: Yes
Permitted: Yes
Wet space: No
Addition: No
Conversion: No

2 Floor 1 - Bath



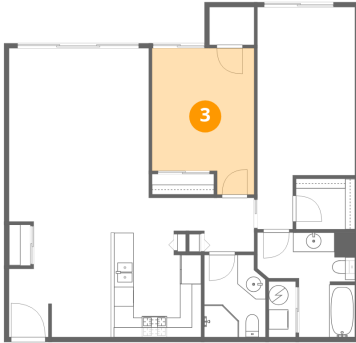
Dimensions: 10'0" x 10'8"
Area: 80 sq. ft
Counted as living area: Yes

Heated: Yes
Finished: Yes
Enclosed: Yes
Contiguous: Yes
Permitted: Yes
Wet space: Yes
Addition: No
Conversion: No

Home data report

1111 Burlington Avenue, Lisle, DuPage County, Illinois, United States, 60532, 207

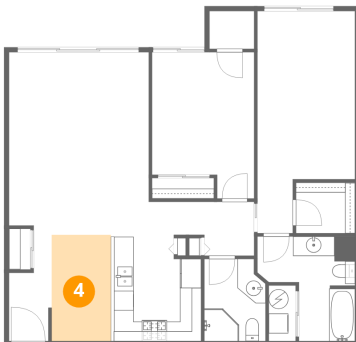
3 Floor 1 - Bedroom



Dimensions: 10'5" x 14'11"
Area: 140 sq. ft
Counted as living area: Yes

Heated: Yes
Finished: Yes
Enclosed: Yes
Contiguous: Yes
Permitted: Yes
Wet space: No
Addition: No
Conversion: No

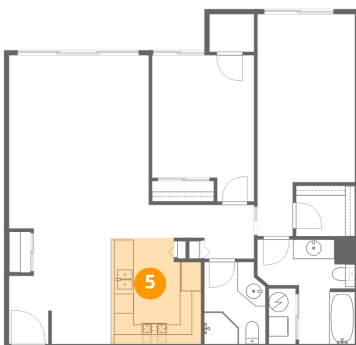
4 Floor 1 - Dining Area



Dimensions: 6'1" x 10'10"
Area: 66 sq. ft
Counted as living area: Yes

Heated: Yes
Finished: Yes
Enclosed: Yes
Contiguous: Yes
Permitted: Yes
Wet space: No
Addition: No
Conversion: No

5 Floor 1 - Kitchen



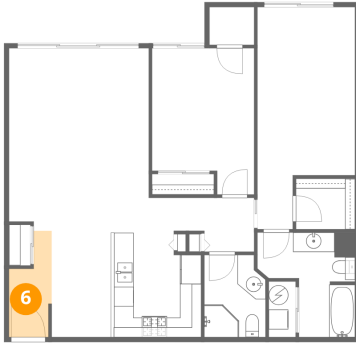
Dimensions: 8'10" x 10'10"
Area: 93 sq. ft
Counted as living area: Yes

Heated: Yes
Finished: Yes
Enclosed: Yes
Contiguous: Yes
Permitted: Yes
Wet space: No
Addition: No
Conversion: No

Home data report

1111 Burlington Avenue, Lisle, DuPage County, Illinois, United States, 60532, 207

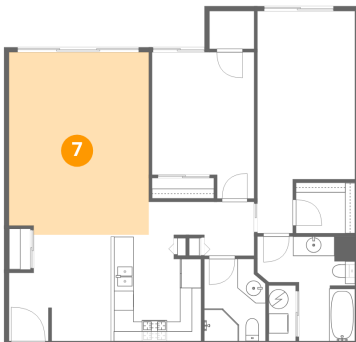
6 Floor 1 - Foyer



Dimensions: 4'4" x 10'10"
Area: 36 sq. ft
Counted as living area: Yes

Heated: Yes
Finished: Yes
Enclosed: Yes
Contiguous: Yes
Permitted: Yes
Wet space: No
Addition: No
Conversion: No

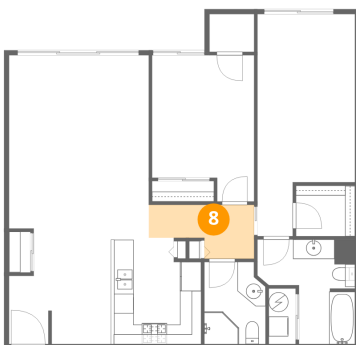
7 Floor 1 - Living Room



Dimensions: 14'3" x 18'8"
Area: 264 sq. ft
Counted as living area: Yes

Heated: Yes
Finished: Yes
Enclosed: Yes
Contiguous: Yes
Permitted: Yes
Wet space: No
Addition: No
Conversion: No

8 Floor 1 - Hall

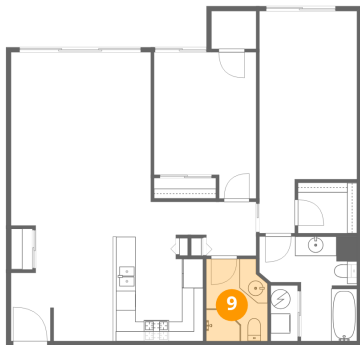


Dimensions: 10'9" x 5'6"
Area: 47 sq. ft
Counted as living area: Yes

Heated: Yes
Finished: Yes
Enclosed: Yes
Contiguous: Yes
Permitted: Yes
Wet space: No
Addition: No
Conversion: No

1111 Burlington Avenue, Lisle, DuPage County, Illinois, United States, 60532, 207

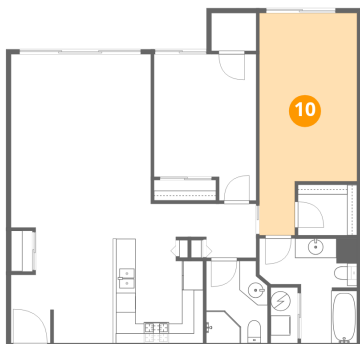
9 Floor 1 - Bath



Dimensions: 6'3" x 8'5"
Area: 50 sq. ft
Counted as living area: Yes

Heated: Yes
Finished: Yes
Enclosed: Yes
Contiguous: Yes
Permitted: Yes
Wet space: Yes
Addition: No
Conversion: No

10 Floor 1 - Primary Bedroom



Dimensions: 10'0" x 22'8"
Area: 192 sq. ft
Counted as living area: Yes

Heated: Yes
Finished: Yes
Enclosed: Yes
Contiguous: Yes
Permitted: Yes
Wet space: No
Addition: No
Conversion: No