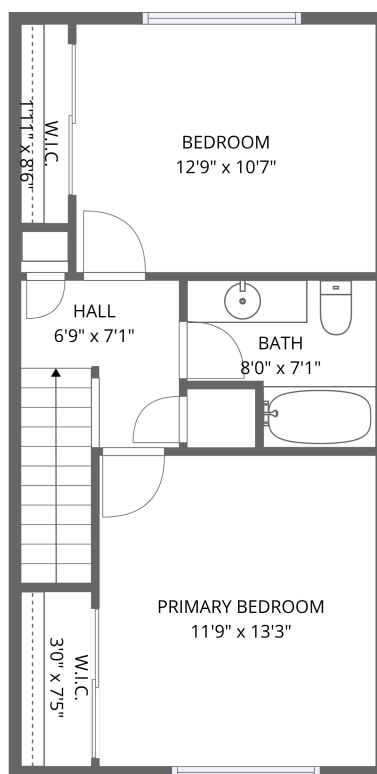


1st floor



2nd floor

## Total Area: 947 sq. ft

1st Floor: 470 sq. ft, 2nd Floor: 477 sq. ft

Excluded: Garage 325 sq. ft, Walls: 105 sq. ft

## Property summary

 **2** Floors

 **2** Bedrooms

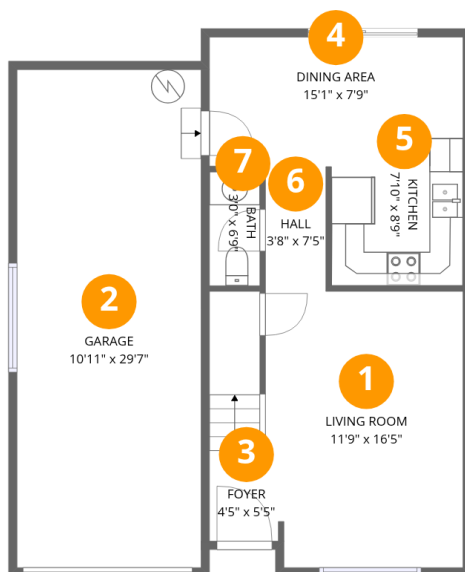
 **1** Bathrooms

Home data report

**2034 SW Fellows St, McMinnville, OR, US**

 **1**  
Half baths

 **1**  
Garages



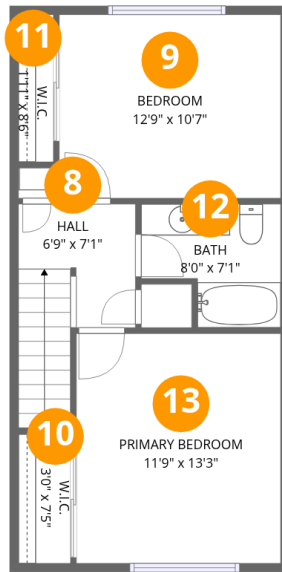
## Room dimensions

Floor 1

Total: 470 sqft

Excluded: 325 sqft

#		Dimensions	sqft	Counted as living area
1	Living Room	11'9" x 16'5"	193 sq. ft	Yes
2	Garage	10'11" x 29'7"	324 sq. ft	No
3	Foyer	4'5" x 5'5"	24 sq. ft	Yes
4	Dining Area	15'1" x 7'9"	116 sq. ft	Yes
5	Kitchen	7'10" x 8'9"	69 sq. ft	Yes
6	Hall	3'8" x 7'5"	27 sq. ft	Yes
7	Bath	3'0" x 6'9"	20 sq. ft	Yes



## Room dimensions

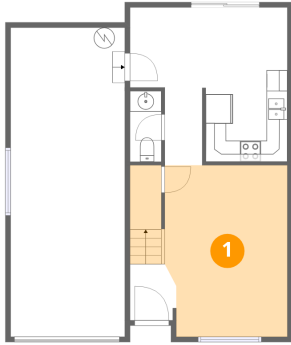
Floor 2

Total: 477 sqft

Excluded: 0 sqft

#		Dimensions	sqft	Counted as living area
8	Hall	6'9" x 7'1"	48 sq. ft	Yes
9	Bedroom	12'9" x 10'7"	135 sq. ft	Yes
10	W.I.C.	3'0" x 7'5"	22 sq. ft	Yes
11	W.I.C.	1'11" x 8'6"	17 sq. ft	Yes
12	Bath	8'0" x 7'1"	57 sq. ft	Yes
13	Primary Bedroom	11'9" x 13'3"	156 sq. ft	Yes

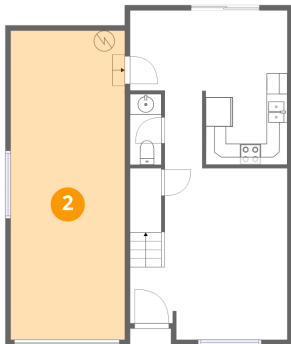
## 1 Floor 1 - Living Room



Dimensions: 11'9" x 16'5"  
Area: 193 sq. ft  
Counted as living area: Yes

Heated: Yes  
Finished: Yes  
Enclosed: Yes  
Contiguous: Yes  
Permitted: Yes  
Wet space: No  
Addition: No  
Conversion: No

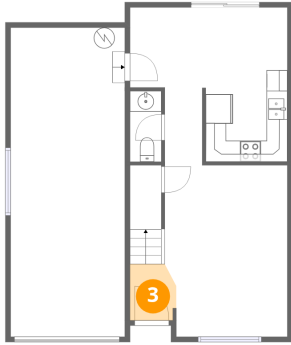
## 2 Floor 1 - Garage



Dimensions: 10'11" x 29'7"  
Area: 324 sq. ft  
Counted as living area: No

Heated: No  
Finished: No  
Enclosed: Yes  
Contiguous: Yes  
Permitted: Yes  
Wet space: No  
Addition: No  
Conversion: No

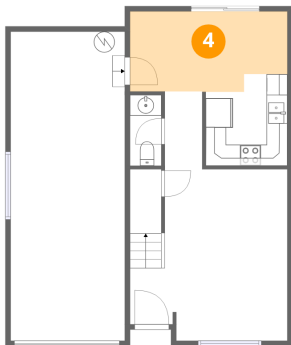
### 3 Floor 1 - Foyer



Dimensions: 4'5" x 5'5"  
Area: 24 sq. ft  
Counted as living area: Yes

Heated: Yes  
Finished: Yes  
Enclosed: Yes  
Contiguous: Yes  
Permitted: Yes  
Wet space: No  
Addition: No  
Conversion: No

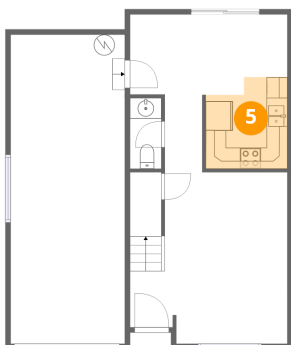
### 4 Floor 1 - Dining Area



Dimensions: 15'1" x 7'9"  
Area: 116 sq. ft  
Counted as living area: Yes

Heated: Yes  
Finished: Yes  
Enclosed: Yes  
Contiguous: Yes  
Permitted: Yes  
Wet space: No  
Addition: No  
Conversion: No

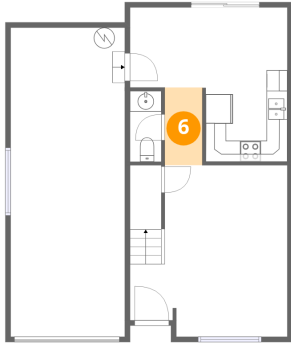
### 5 Floor 1 - Kitchen



Dimensions: 7'10" x 8'9"  
Area: 69 sq. ft  
Counted as living area: Yes

Heated: Yes  
Finished: Yes  
Enclosed: Yes  
Contiguous: Yes  
Permitted: Yes  
Wet space: No  
Addition: No  
Conversion: No

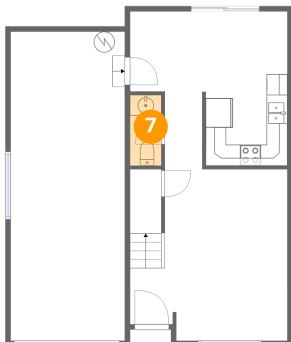
### 6 Floor 1 - Hall



Dimensions: 3'8" x 7'5"  
Area: 27 sq. ft  
Counted as living area: Yes

Heated: Yes  
Finished: Yes  
Enclosed: Yes  
Contiguous: Yes  
Permitted: Yes  
Wet space: No  
Addition: No  
Conversion: No

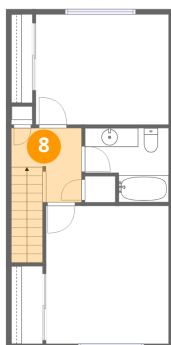
### 7 Floor 1 - Bath



Dimensions: 3'0" x 6'9"  
Area: 20 sq. ft  
Counted as living area: Yes

Heated: Yes  
Finished: Yes  
Enclosed: Yes  
Contiguous: Yes  
Permitted: Yes  
Wet space: Yes  
Addition: No  
Conversion: No

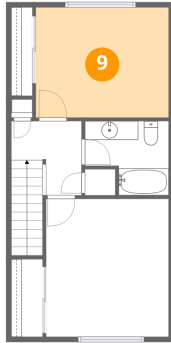
### 8 Floor 2 - Hall



Dimensions: 6'9" x 7'1"  
Area: 48 sq. ft  
Counted as living area: Yes

Heated: Yes  
Finished: Yes  
Enclosed: Yes  
Contiguous: Yes  
Permitted: Yes  
Wet space: No  
Addition: No  
Conversion: No

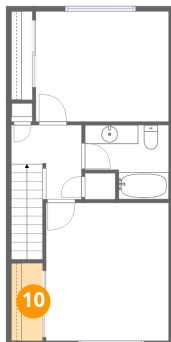
### 9 Floor 2 - Bedroom



Dimensions: 12'9" x 10'7"  
Area: 135 sq. ft  
Counted as living area: Yes

Heated: Yes  
Finished: Yes  
Enclosed: Yes  
Contiguous: Yes  
Permitted: Yes  
Wet space: No  
Addition: No  
Conversion: No

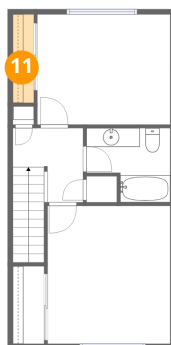
### 10 Floor 2 - W.I.C.



Dimensions: 3'0" x 7'5"  
Area: 22 sq. ft  
Counted as living area: Yes

Heated: Yes  
Finished: Yes  
Enclosed: Yes  
Contiguous: Yes  
Permitted: Yes  
Wet space: No  
Addition: No  
Conversion: No

### 11 Floor 2 - W.I.C.

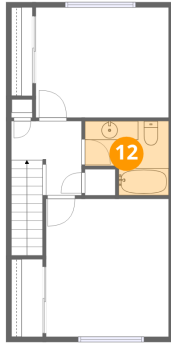


Dimensions: 1'11" x 8'6"  
Area: 17 sq. ft  
Counted as living area: Yes

Heated: Yes  
Finished: Yes  
Enclosed: Yes  
Contiguous: Yes  
Permitted: Yes  
Wet space: No  
Addition: No  
Conversion: No

**12** Floor 2 - Bath

---

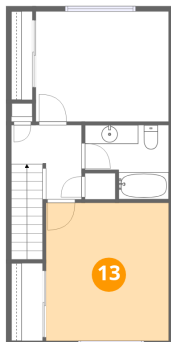


Dimensions: 8'0" x 7'1"  
Area: 57 sq. ft  
Counted as living area: Yes

Heated: Yes  
Finished: Yes  
Enclosed: Yes  
Contiguous: Yes  
Permitted: Yes  
Wet space: Yes  
Addition: No  
Conversion: No

**13** Floor 2 - Primary Bedroom

---



Dimensions: 11'9" x 13'3"  
Area: 156 sq. ft  
Counted as living area: Yes

Heated: Yes  
Finished: Yes  
Enclosed: Yes  
Contiguous: Yes  
Permitted: Yes  
Wet space: No  
Addition: No  
Conversion: No