

Home data report

**124 Peterhoff Street, Malverne, Nassau County, New York,
United States, 11565**



Total Area: 2487 sq. ft

Basement: 571 sq. ft, 1st Floor: 1178 sq. ft, 2nd Floor: 738 sq. ft

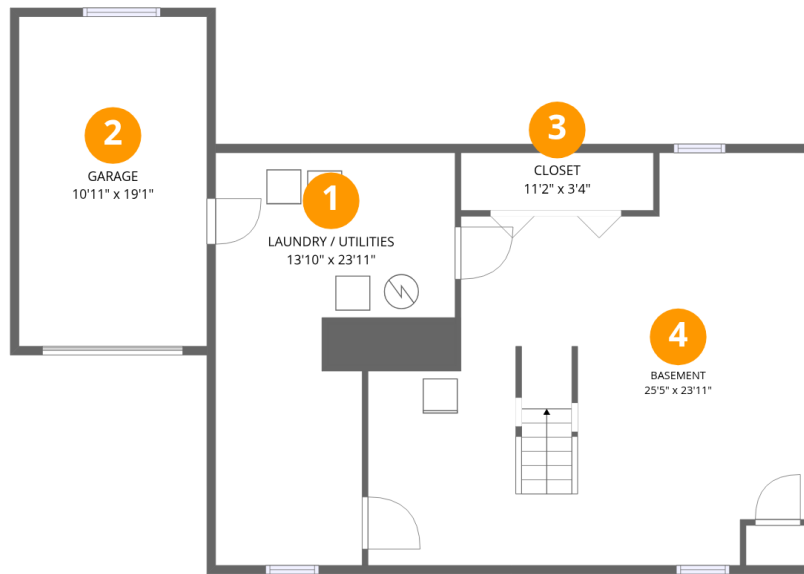
Excluded: Laundry / utilities 247 sq. ft, Garage 208 sq. ft, Walls: 222 sq. ft

Property summary



Home data report

124 Peterhoff Street, Malverne, Nassau County, New York,
United States, 11565



Room dimensions

Floor 1 Below grade

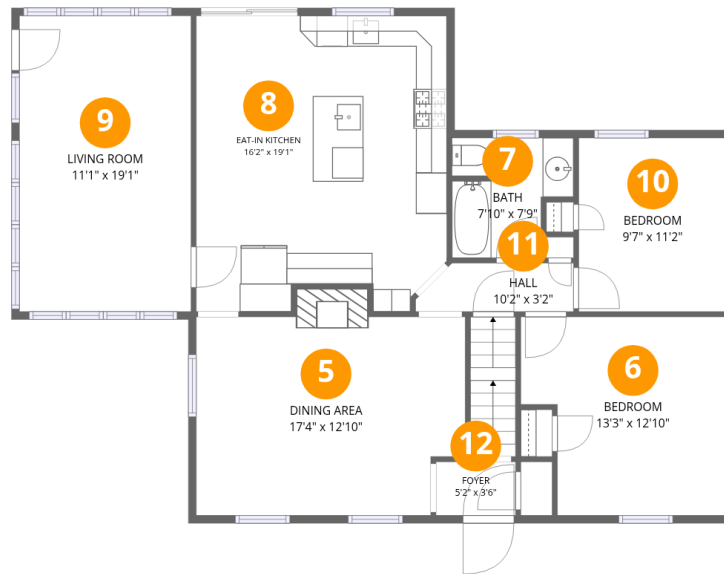
Total:571sqft

Excluded: 455sqft

#		Dimensions	sqft	Counted as living area
1	Laundry / Utilities	13'10" x 23'11"	247 sq. ft	No
2	Garage	10'11" x 19'1"	208 sq. ft	No
3	Closet	11'2" x 3'4"	37 sq. ft	Yes
4	Basement	25'5" x 23'11"	486 sq. ft	Yes

Home data report

124 Peterhoff Street, Malverne, Nassau County, New York,
United States, 11565



Room dimensions

Floor 2

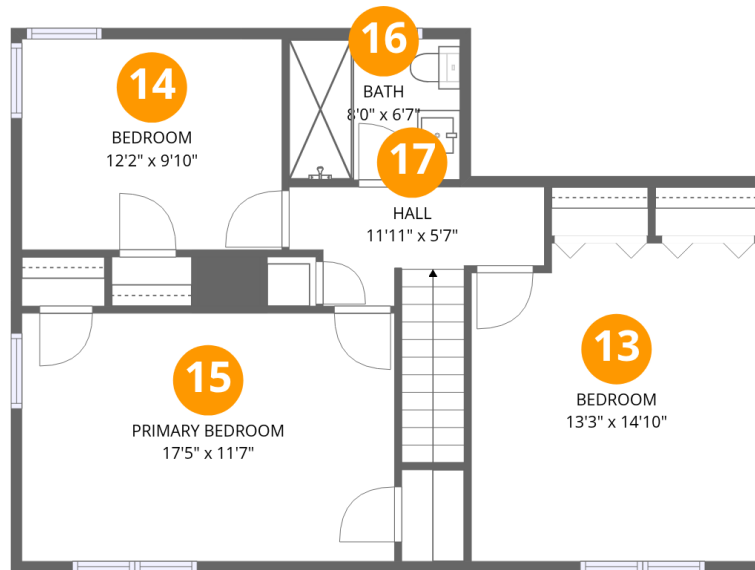
Total:1178sqft

Excluded: 0sqft

#		Dimensions	sqft	Counted as living area
5	Dining Area	17'4" x 12'10"	222 sq. ft	Yes
6	Bedroom	13'3" x 12'10"	153 sq. ft	Yes
7	Bath	7'10" x 7'9"	51 sq. ft	Yes
8	Eat-in Kitchen	16'2" x 19'1"	294 sq. ft	Yes
9	Living Room	11'1" x 19'1"	211 sq. ft	Yes
10	Bedroom	9'7" x 11'2"	107 sq. ft	Yes
11	Hall	10'2" x 3'2"	29 sq. ft	Yes
12	Foyer	5'2" x 3'6"	18 sq. ft	Yes

Home data report

124 Peterhoff Street, Malverne, Nassau County, New York,
United States, 11565



Room dimensions

Floor 3

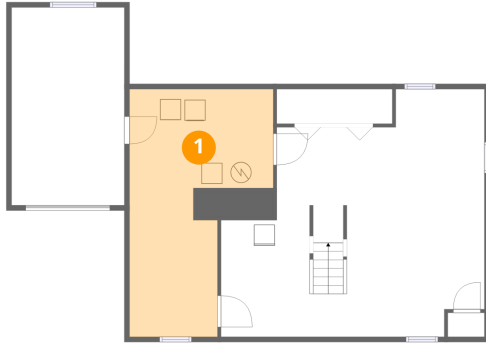
Total:738sqft

Excluded: 0sqft

#		Dimensions	sqft	Counted as living area
13	Bedroom	13'3" x 14'10"	192 sq. ft	Yes
14	Bedroom	12'2" x 9'10"	119 sq. ft	Yes
15	Primary Bedroom	17'5" x 11'7"	201 sq. ft	Yes
16	Bath	8'0" x 6'7"	52 sq. ft	Yes
17	Hall	11'11" x 5'7"	76 sq. ft	Yes

124 Peterhoff Street, Malverne, Nassau County, New York,
United States, 11565

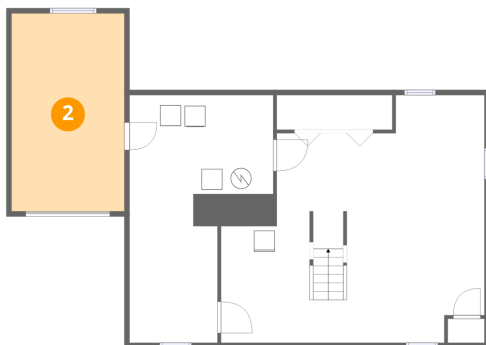
1 Floor 1 - Laundry / Utilities



Dimensions: 13'10" x 23'11"
Area: 247 sq. ft
Counted as living area: No

Heated: Yes
Finished: No
Enclosed: Yes
Contiguous: Yes
Permitted: Yes
Wet space: No
Addition: No
Conversion: No

2 Floor 1 - Garage

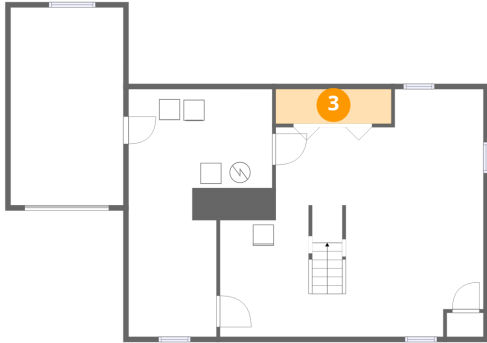


Dimensions: 10'11" x 19'1"
Area: 208 sq. ft
Counted as living area: No

Heated: No
Finished: No
Enclosed: Yes
Contiguous: Yes
Permitted: Yes
Wet space: No
Addition: No
Conversion: No

124 Peterhoff Street, Malverne, Nassau County, New York,
United States, 11565

3 Floor 1 - Closet



Dimensions: 11'2" x 3'4"
Area: 37 sq. ft
Counted as living area: Yes

Heated: Yes
Finished: Yes
Enclosed: Yes
Contiguous: Yes
Permitted: Yes
Wet space: No
Addition: No
Conversion: No

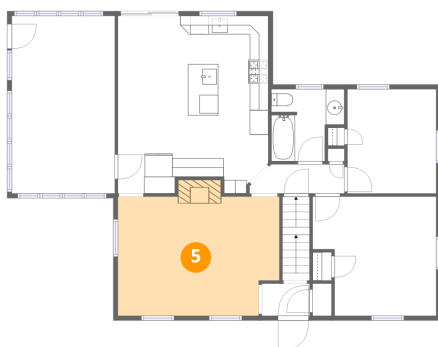
4 Floor 1 - Basement



Dimensions: 25'5" x 23'11"
Area: 486 sq. ft
Counted as living area: Yes

Heated: Yes
Finished: Yes
Enclosed: Yes
Contiguous: Yes
Permitted: Yes
Wet space: No
Addition: No
Conversion: No

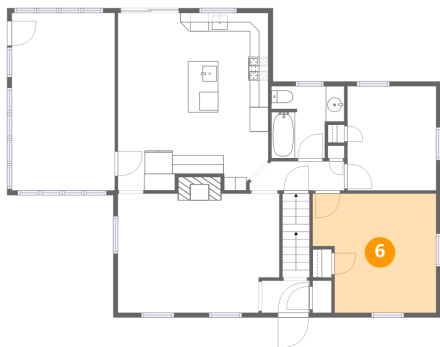
5 Floor 2 - Dining Area



Dimensions: 17'4" x 12'10"
Area: 222 sq. ft
Counted as living area: Yes

Heated: Yes
Finished: Yes
Enclosed: Yes
Contiguous: Yes
Permitted: Yes
Wet space: No
Addition: No
Conversion: No

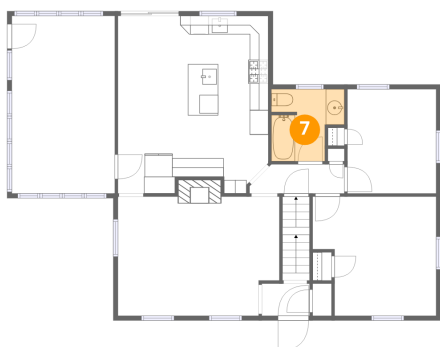
6 Floor 2 - Bedroom



Dimensions: 13'3" x 12'10"
Area: 153 sq. ft
Counted as living area: Yes

Heated: Yes
Finished: Yes
Enclosed: Yes
Contiguous: Yes
Permitted: Yes
Wet space: No
Addition: No
Conversion: No

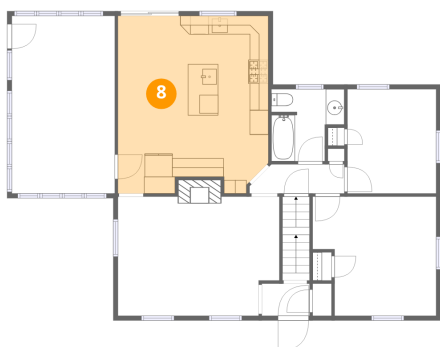
7 Floor 2 - Bath



Dimensions: 7'10" x 7'9"
Area: 51 sq. ft
Counted as living area: Yes

Heated: Yes
Finished: Yes
Enclosed: Yes
Contiguous: Yes
Permitted: Yes
Wet space: Yes
Addition: No
Conversion: No

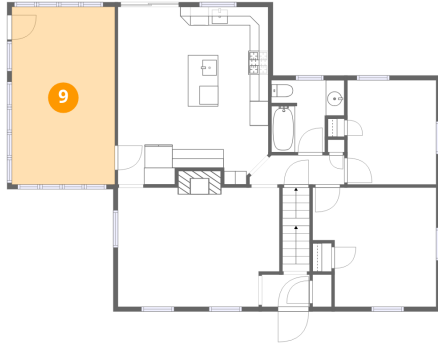
8 Floor 2 - Eat-in Kitchen



Dimensions: 16'2" x 19'1"
Area: 294 sq. ft
Counted as living area: Yes

Heated: Yes
Finished: Yes
Enclosed: Yes
Contiguous: Yes
Permitted: Yes
Wet space: No
Addition: No
Conversion: No

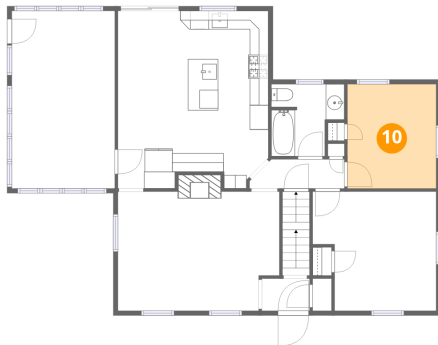
9 Floor 2 - Living Room



Dimensions: 11'1" x 19'1"
Area: 211 sq. ft
Counted as living area: Yes

Heated: Yes
Finished: Yes
Enclosed: Yes
Contiguous: Yes
Permitted: Yes
Wet space: No
Addition: No
Conversion: No

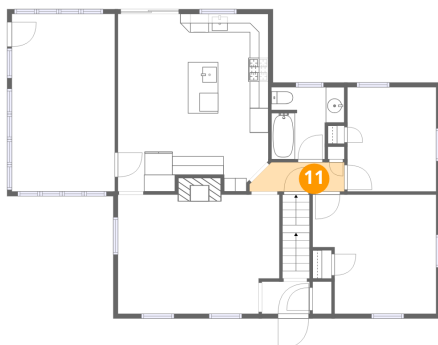
10 Floor 2 - Bedroom



Dimensions: 9'7" x 11'2"
Area: 107 sq. ft
Counted as living area: Yes

Heated: Yes
Finished: Yes
Enclosed: Yes
Contiguous: Yes
Permitted: Yes
Wet space: No
Addition: No
Conversion: No

11 Floor 2 - Hall



Dimensions: 10'2" x 3'2"
Area: 29 sq. ft
Counted as living area: Yes

Heated: Yes
Finished: Yes
Enclosed: Yes
Contiguous: Yes
Permitted: Yes
Wet space: No
Addition: No
Conversion: No

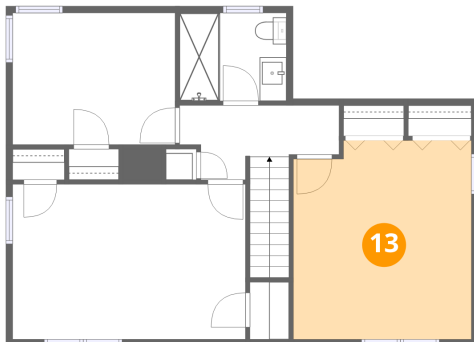
12 Floor 2 - Foyer



Dimensions: 5'2" x 3'6"
Area: 18 sq. ft
Counted as living area: Yes

Heated: Yes
Finished: Yes
Enclosed: Yes
Contiguous: Yes
Permitted: Yes
Wet space: No
Addition: No
Conversion: No

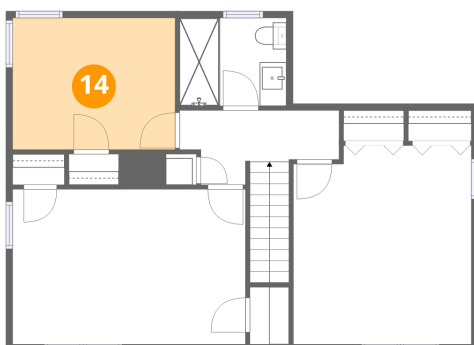
13 Floor 3 - Bedroom



Dimensions: 13'3" x 14'10"
Area: 192 sq. ft
Counted as living area: Yes

Heated: Yes
Finished: Yes
Enclosed: Yes
Contiguous: Yes
Permitted: Yes
Wet space: No
Addition: No
Conversion: No

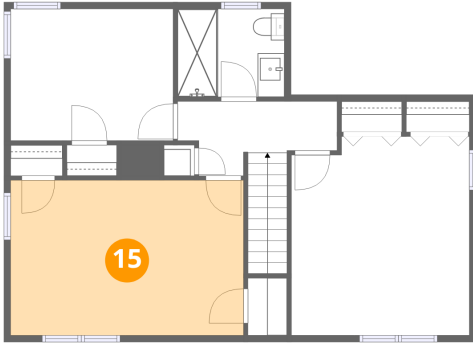
14 Floor 3 - Bedroom



Dimensions: 12'2" x 9'10"
Area: 119 sq. ft
Counted as living area: Yes

Heated: Yes
Finished: Yes
Enclosed: Yes
Contiguous: Yes
Permitted: Yes
Wet space: No
Addition: No
Conversion: No

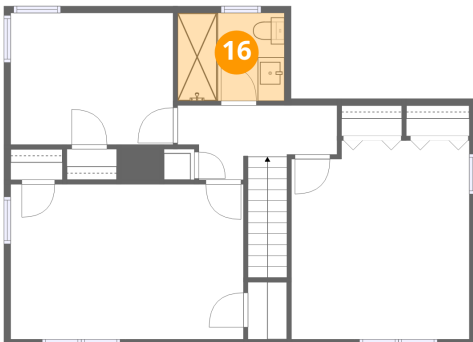
15 Floor 3 - Primary Bedroom



Dimensions: 17'5" x 11'7"
Area: 201 sq. ft
Counted as living area: Yes

Heated: Yes
Finished: Yes
Enclosed: Yes
Contiguous: Yes
Permitted: Yes
Wet space: No
Addition: No
Conversion: No

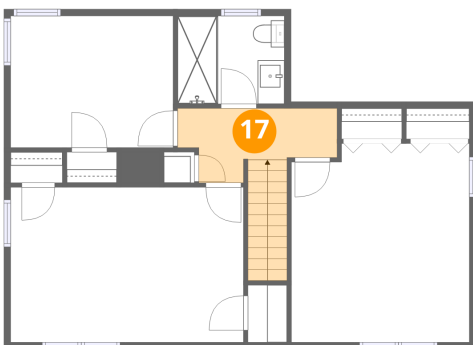
16 Floor 3 - Bath



Dimensions: 8'0" x 6'7"
Area: 52 sq. ft
Counted as living area: Yes

Heated: Yes
Finished: Yes
Enclosed: Yes
Contiguous: Yes
Permitted: Yes
Wet space: Yes
Addition: No
Conversion: No

17 Floor 3 - Hall



Dimensions: 11'11" x 5'7"
Area: 76 sq. ft
Counted as living area: Yes

Heated: Yes
Finished: Yes
Enclosed: Yes
Contiguous: Yes
Permitted: Yes
Wet space: No
Addition: No
Conversion: No