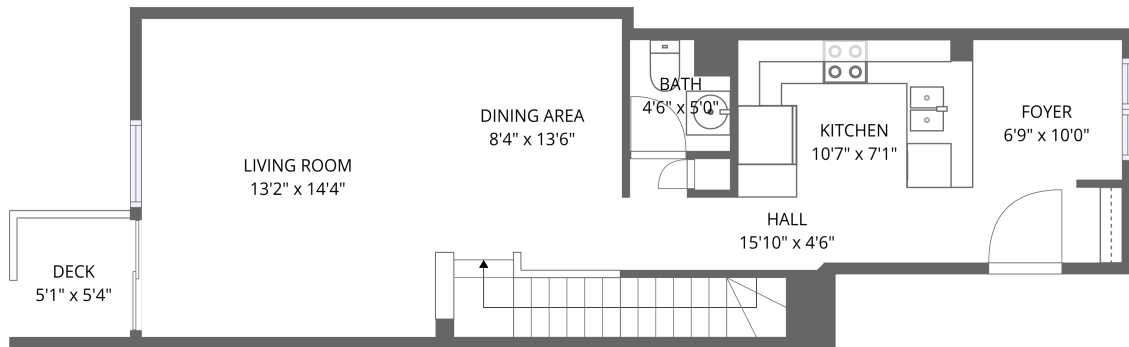
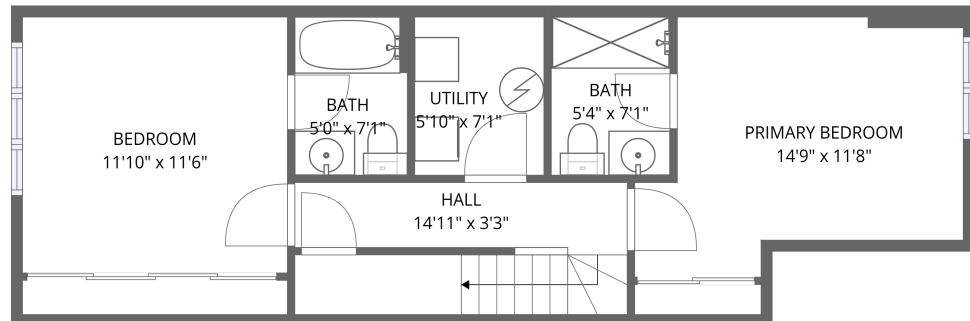


Home data report

**364 Crownridge Drive, Bridlewood, Kanata, Ontario, Canada,
K2M 3A4**



1st floor



Basement

Total Area: 1102 sq. ft

Basement: 536 sq. ft, 1st Floor: 566 sq. ft

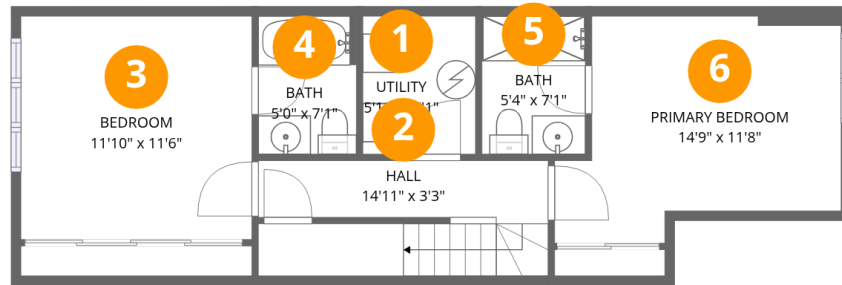
Excluded: Deck 27 sq. ft, Walls: 84 sq. ft

Property summary



Home data report

364 Crownridge Drive, Bridlewood, Kanata, Ontario, Canada,
K2M 3A4



Room dimensions

Floor 1 Below grade

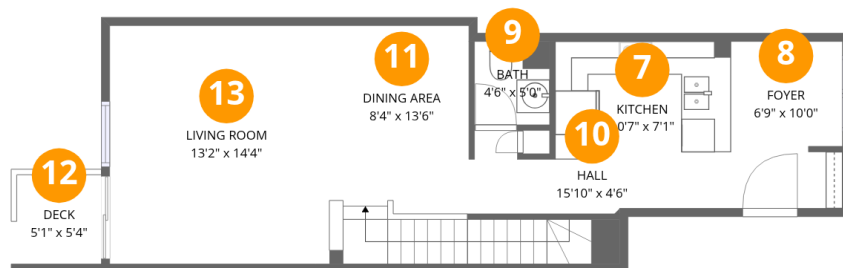
Total:536sqft

Excluded: 0sqft

#		Dimensions	sqft	Counted as living area
1	Utility	5'10" x 7'1"	41 sq. ft	Yes
2	Hall	14'11" x 3'3"	48 sq. ft	Yes
3	Bedroom	11'10" x 11'6"	137 sq. ft	Yes
4	Bath	5'0" x 7'1"	36 sq. ft	Yes
5	Bath	5'4" x 7'1"	38 sq. ft	Yes
6	Primary Bedroom	14'9" x 11'8"	173 sq. ft	Yes

Home data report

364 Crownridge Drive, Bridlewood, Kanata, Ontario, Canada, K2M 3A4



Room dimensions

Floor 2

Total:566sqft Excluded: 27sqft

#		Dimensions	sqft	Counted as living area
7	Kitchen	10'7" x 7'1"	75 sq. ft	Yes
8	Foyer	6'9" x 10'0"	67 sq. ft	Yes
9	Bath	4'6" x 5'0"	23 sq. ft	Yes
10	Hall	15'10" x 4'6"	71 sq. ft	Yes
11	Dining Area	8'4" x 13'6"	113 sq. ft	Yes
12	Deck	5'1" x 5'4"	27 sq. ft	No
13	Living Room	13'2" x 14'4"	189 sq. ft	Yes

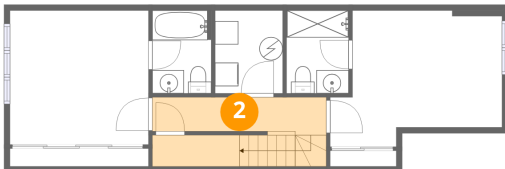
1 Floor 1 - Utility



Dimensions: 5'10" x 7'1"
Area: 41 sq. ft
Counted as living area: Yes

Heated: Yes
Finished: Yes
Enclosed: Yes
Contiguous: Yes
Permitted: Yes
Wet space: No
Addition: No
Conversion: No

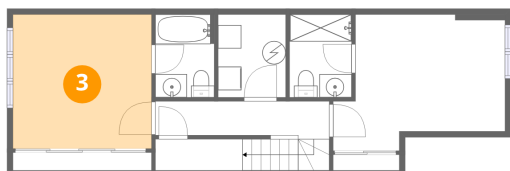
2 Floor 1 - Hall



Dimensions: 14'11" x 3'3"
Area: 48 sq. ft
Counted as living area: Yes

Heated: Yes
Finished: Yes
Enclosed: Yes
Contiguous: Yes
Permitted: Yes
Wet space: No
Addition: No
Conversion: No

3 Floor 1 - Bedroom



Dimensions: 11'10" x 11'6"
Area: 137 sq. ft
Counted as living area: Yes

Heated: Yes
Finished: Yes
Enclosed: Yes
Contiguous: Yes
Permitted: Yes
Wet space: No
Addition: No
Conversion: No

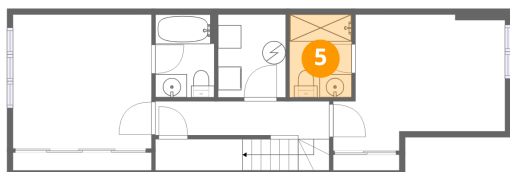
4 Floor 1 - Bath



Dimensions: 5'0" x 7'1"
Area: 36 sq. ft
Counted as living area: Yes

Heated: Yes
Finished: Yes
Enclosed: Yes
Contiguous: Yes
Permitted: Yes
Wet space: Yes
Addition: No
Conversion: No

5 Floor 1 - Bath



Dimensions: 5'4" x 7'1"
Area: 38 sq. ft
Counted as living area: Yes

Heated: Yes
Finished: Yes
Enclosed: Yes
Contiguous: Yes
Permitted: Yes
Wet space: Yes
Addition: No
Conversion: No

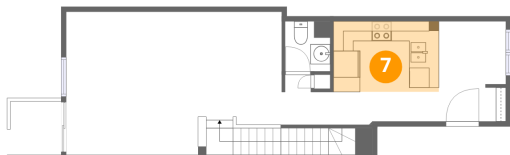
6 Floor 1 - Primary Bedroom



Dimensions: 14'9" x 11'8"
Area: 173 sq. ft
Counted as living area: Yes

Heated: Yes
Finished: Yes
Enclosed: Yes
Contiguous: Yes
Permitted: Yes
Wet space: No
Addition: No
Conversion: No

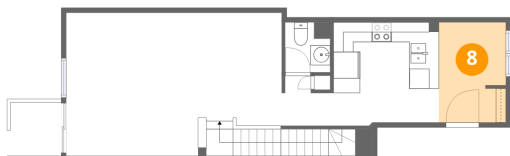
7 Floor 2 - Kitchen



Dimensions: 10'7" x 7'1"
Area: 75 sq. ft
Counted as living area: Yes

Heated: Yes
Finished: Yes
Enclosed: Yes
Contiguous: Yes
Permitted: Yes
Wet space: No
Addition: No
Conversion: No

8 Floor 2 - Foyer



Dimensions: 6'9" x 10'0"
Area: 67 sq. ft
Counted as living area: Yes

Heated: Yes
Finished: Yes
Enclosed: Yes
Contiguous: Yes
Permitted: Yes
Wet space: No
Addition: No
Conversion: No

364 Crownridge Drive, Bridlewood, Kanata, Ontario, Canada,
K2M 3A4

9 Floor 2 - Bath



Dimensions: 4'6" x 5'0"
Area: 23 sq. ft
Counted as living area: Yes

Heated: Yes
Finished: Yes
Enclosed: Yes
Contiguous: Yes
Permitted: Yes
Wet space: No
Addition: No
Conversion: No

10 Floor 2 - Hall



Dimensions: 15'10" x 4'6"
Area: 71 sq. ft
Counted as living area: Yes

Heated: Yes
Finished: Yes
Enclosed: Yes
Contiguous: Yes
Permitted: Yes
Wet space: No
Addition: No
Conversion: No

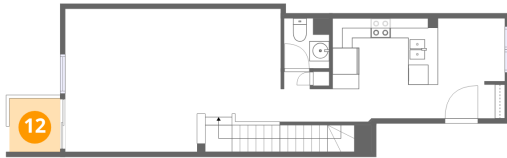
11 Floor 2 - Dining Area



Dimensions: 8'4" x 13'6"
Area: 113 sq. ft
Counted as living area: Yes

Heated: Yes
Finished: Yes
Enclosed: Yes
Contiguous: Yes
Permitted: Yes
Wet space: No
Addition: No
Conversion: No

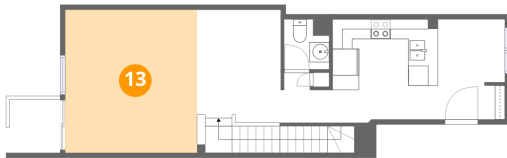
12 Floor 2 - Deck



Dimensions: 5'1" x 5'4"
Area: 27 sq. ft
Counted as living area: No

Heated: No
Finished: No
Enclosed: No
Contiguous: Yes
Permitted: Yes
Wet space: No
Addition: No
Conversion: No

13 Floor 2 - Living Room



Dimensions: 13'2" x 14'4"
Area: 189 sq. ft
Counted as living area: Yes

Heated: Yes
Finished: Yes
Enclosed: Yes
Contiguous: Yes
Permitted: Yes
Wet space: No
Addition: No
Conversion: No