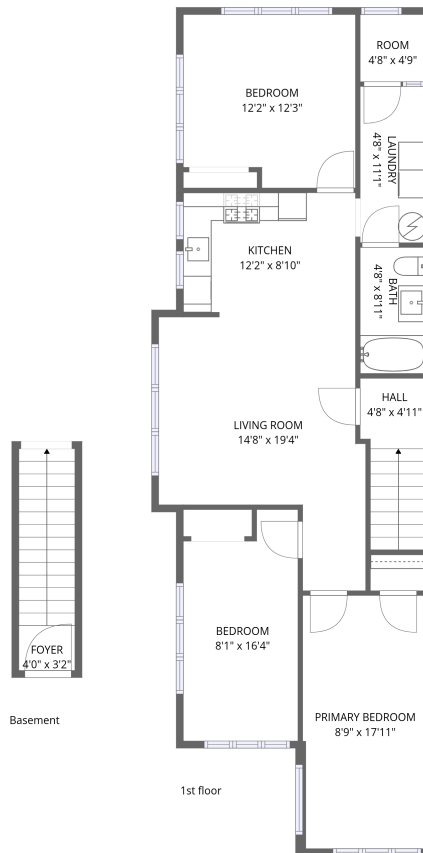


Home data report

1242 1/2 Irolo St, Los Angeles, CA, US



Total Area: 1034 sq. ft

Basement: 62 sq. ft, 1st Floor: 972 sq. ft

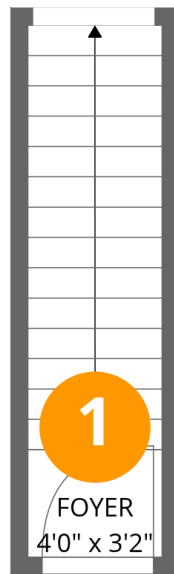
Excluded: Walls: 0 sq. ft

Property summary

 **2** Floors

 **3** Bedrooms

 **1** Bathrooms



Room dimensions

Floor 1 Below grade

Total: 62 sqft

Excluded: 0 sqft

#		Dimensions	sqft	Counted as living area
1	Foyer	4'0" x 3'2"	13 sq. ft	Yes

Home data report

1242 1/2 Irolo St, Los Angeles, CA, US



Room dimensions

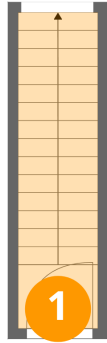
Floor 2

Total:972sqft

Excluded: 0sqft

#		Dimensions	sqft	Counted as living area
2	Laundry	4'8" x 11'1"	52 sq. ft	Yes
3	Kitchen	12'2" x 8'10"	107 sq. ft	Yes
4	Bath	4'8" x 8'11"	42 sq. ft	Yes
5	Hall	4'8" x 4'11"	23 sq. ft	Yes
6	Bedroom	8'1" x 16'4"	133 sq. ft	Yes
7	Bedroom	12'2" x 12'3"	149 sq. ft	Yes
8	Primary Bedroom	8'9" x 17'11"	157 sq. ft	Yes
9	Living Room	14'8" x 19'4"	283 sq. ft	Yes
10	Room	4'8" x 4'9"	22 sq. ft	Yes

1 Floor 1 - Foyer



Dimensions: 4'0" x 3'2"
Area: 13 sq. ft
Counted as living area: Yes

Heated: Yes
Finished: Yes
Enclosed: Yes
Contiguous: Yes
Permitted: Yes
Wet space: No
Addition: No
Conversion: No

2 Floor 2 - Laundry



Dimensions: 4'8" x 11'1"
Area: 52 sq. ft
Counted as living area: Yes

Heated: Yes
Finished: Yes
Enclosed: Yes
Contiguous: Yes
Permitted: Yes
Wet space: No
Addition: No
Conversion: No

3 Floor 2 - Kitchen



Dimensions: 12'2" x 8'10"
Area: 107 sq. ft
Counted as living area: Yes

Heated: Yes
Finished: Yes
Enclosed: Yes
Contiguous: Yes
Permitted: Yes
Wet space: No
Addition: No
Conversion: No

4 Floor 2 - Bath



Dimensions: 4'8" x 8'11"
Area: 42 sq. ft
Counted as living area: Yes

Heated: Yes
Finished: Yes
Enclosed: Yes
Contiguous: Yes
Permitted: Yes
Wet space: Yes
Addition: No
Conversion: No

5 Floor 2 - Hall



Dimensions: 4'8" x 4'11"
Area: 23 sq. ft
Counted as living area: Yes

Heated: Yes
Finished: Yes
Enclosed: Yes
Contiguous: Yes
Permitted: Yes
Wet space: No
Addition: No
Conversion: No

6 Floor 2 - Bedroom



Dimensions: 8'1" x 16'4"
Area: 133 sq. ft
Counted as living area: Yes

Heated: Yes
Finished: Yes
Enclosed: Yes
Contiguous: Yes
Permitted: Yes
Wet space: No
Addition: No
Conversion: No

7 Floor 2 - Bedroom



Dimensions: 12'2" x 12'3"
Area: 149 sq. ft
Counted as living area: Yes

Heated: Yes
Finished: Yes
Enclosed: Yes
Contiguous: Yes
Permitted: Yes
Wet space: No
Addition: No
Conversion: No

8 Floor 2 - Primary Bedroom



Dimensions: 8'9" x 17'11"
Area: 157 sq. ft
Counted as living area: Yes

Heated: Yes
Finished: Yes
Enclosed: Yes
Contiguous: Yes
Permitted: Yes
Wet space: No
Addition: No
Conversion: No

9 Floor 2 - Living Room



Dimensions: 14'8" x 19'4"
Area: 283 sq. ft
Counted as living area: Yes

Heated: Yes
Finished: Yes
Enclosed: Yes
Contiguous: Yes
Permitted: Yes
Wet space: No
Addition: No
Conversion: No

10 Floor 2 - Room



Dimensions: 4'8" x 4'9"
Area: 22 sq. ft
Counted as living area: Yes

Heated: Yes
Finished: Yes
Enclosed: Yes
Contiguous: Yes
Permitted: Yes
Wet space: No
Addition: No
Conversion: No