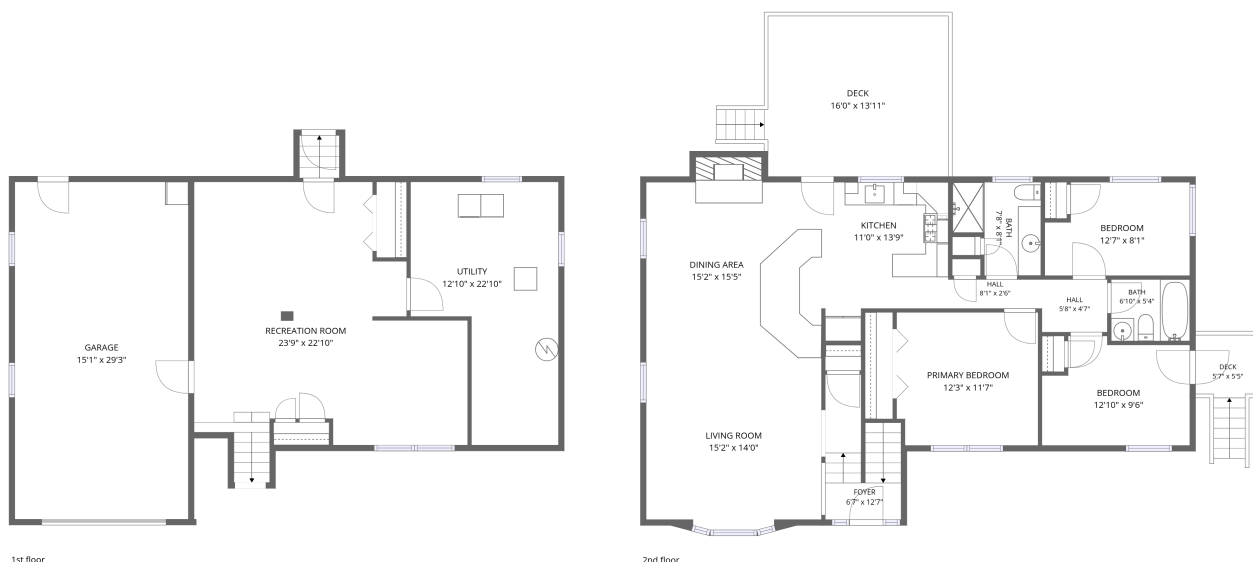


Home data report

9 Cushing Drive, Plymouth, Plymouth County, Massachusetts,  
United States, 02360



**Total Area: 1716 sq. ft**

1st Floor: 495 sq. ft, 2nd Floor: 1221 sq. ft

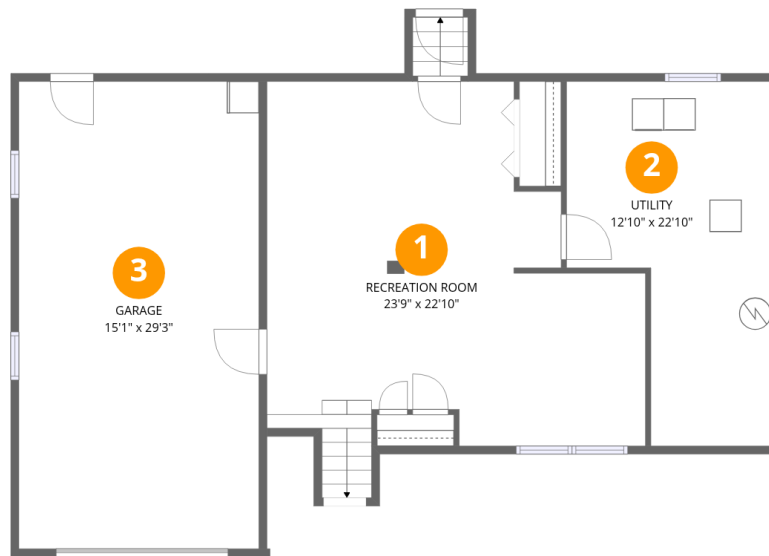
Excluded: Garage 440 sq. ft, Utility 234 sq. ft, Undefined 13 sq. ft, Deck 274 sq. ft,  
Embedded window 7 sq. ft, Fireplace 15 sq. ft, Walls: 170 sq. ft

## Property summary



Home data report

9 Cushing Drive, Plymouth, Plymouth County, Massachusetts, United States, 02360



### Room dimensions

Floor 1

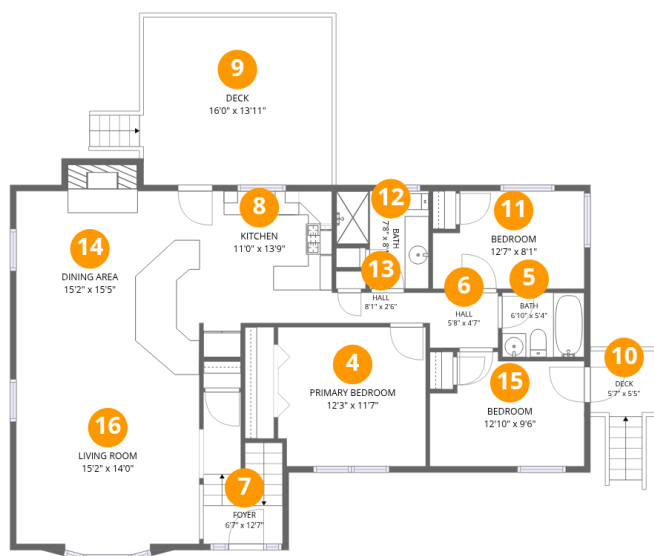
Total:495sqft

Excluded: 687sqft

#		Dimensions	sqft	Counted as living area
1	Recreation Room	23'9" x 22'10"	450 sq. ft	Yes
2	Utility	12'10" x 22'10"	234 sq. ft	No
3	Garage	15'1" x 29'3"	440 sq. ft	No

## Home data report

9 Cushing Drive, Plymouth, Plymouth County, Massachusetts, United States, 02360



## Room dimensions

Floor 2

Total:1221sqft Excluded: 296sqft

#		Dimensions	sqft	Counted as living area
4	Primary Bedroom	12'3" x 11'7"	140 sq. ft	Yes
5	Bath	6'10" x 5'4"	36 sq. ft	Yes
6	Hall	5'8" x 4'7"	26 sq. ft	Yes
7	Foyer	6'7" x 12'7"	68 sq. ft	Yes
8	Kitchen	11'0" x 13'9"	129 sq. ft	Yes
9	Deck	16'0" x 13'11"	230 sq. ft	No
10	Deck	5'7" x 5'5"	44 sq. ft	No
11	Bedroom	12'7" x 8'1"	94 sq. ft	Yes
12	Bath	7'8" x 8'1"	52 sq. ft	Yes
13	Hall	8'1" x 2'6"	21 sq. ft	Yes
14	Dining Area	15'2" x 15'5"	244 sq. ft	Yes

Home data report

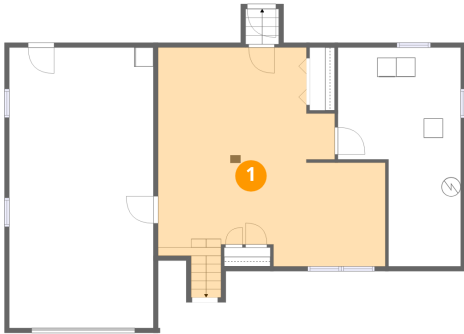
**9 Cushing Drive, Plymouth, Plymouth County, Massachusetts,  
United States, 02360**

#		Dimensions	sqft	Counted as living area
15	Bedroom	12'10" x 9'6"	108 sq. ft	Yes
16	Living Room	15'2" x 14'0"	213 sq. ft	Yes

9 Cushing Drive, Plymouth, Plymouth County, Massachusetts,  
United States, 02360

**1** Floor 1 - Recreation Room

---

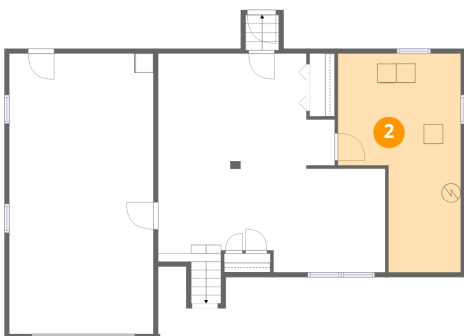


Dimensions: 23'9" x 22'10"  
Area: 450 sq. ft  
Counted as living area: Yes

Heated: Yes  
Finished: Yes  
Enclosed: Yes  
Contiguous: Yes  
Permitted: Yes  
Wet space: No  
Addition: No  
Conversion: No

**2** Floor 1 - Utility

---

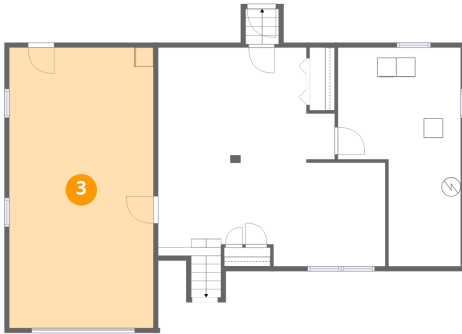


Dimensions: 12'10" x 22'10"  
Area: 234 sq. ft  
Counted as living area: No

Heated: Yes  
Finished: No  
Enclosed: Yes  
Contiguous: Yes  
Permitted: Yes  
Wet space: No  
Addition: No  
Conversion: No

9 Cushing Drive, Plymouth, Plymouth County, Massachusetts,  
United States, 02360

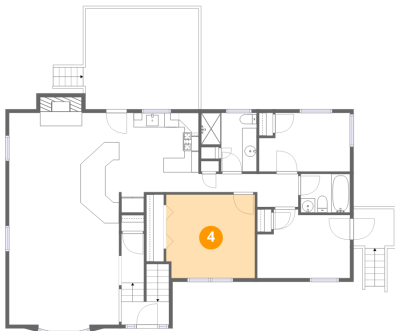
**3** Floor 1 - Garage



Dimensions: 15'1" x 29'3"  
Area: 440 sq. ft  
Counted as living area: No

Heated: No  
Finished: No  
Enclosed: Yes  
Contiguous: Yes  
Permitted: Yes  
Wet space: No  
Addition: No  
Conversion: No

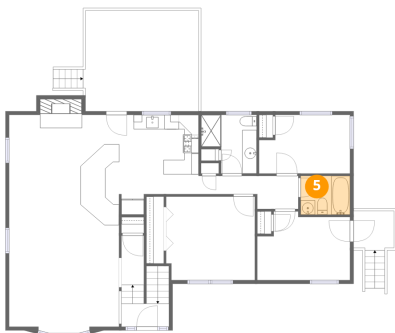
**4** Floor 2 - Primary Bedroom



Dimensions: 12'3" x 11'7"  
Area: 140 sq. ft  
Counted as living area: Yes

Heated: Yes  
Finished: Yes  
Enclosed: Yes  
Contiguous: Yes  
Permitted: Yes  
Wet space: No  
Addition: No  
Conversion: No

**5** Floor 2 - Bath

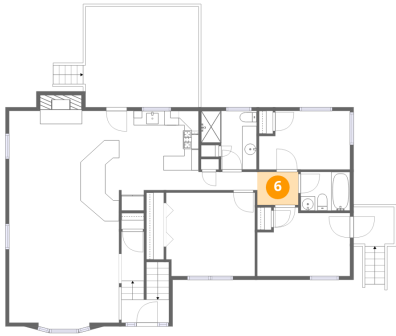


Dimensions: 6'10" x 5'4"  
Area: 36 sq. ft  
Counted as living area: Yes

Heated: Yes  
Finished: Yes  
Enclosed: Yes  
Contiguous: Yes  
Permitted: Yes  
Wet space: Yes  
Addition: No  
Conversion: No

9 Cushing Drive, Plymouth, Plymouth County, Massachusetts,  
United States, 02360

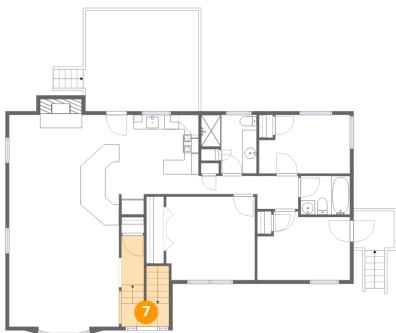
**6** Floor 2 - Hall



Dimensions: 5'8" x 4'7"  
Area: 26 sq. ft  
Counted as living area: Yes

Heated: Yes  
Finished: Yes  
Enclosed: Yes  
Contiguous: Yes  
Permitted: Yes  
Wet space: No  
Addition: No  
Conversion: No

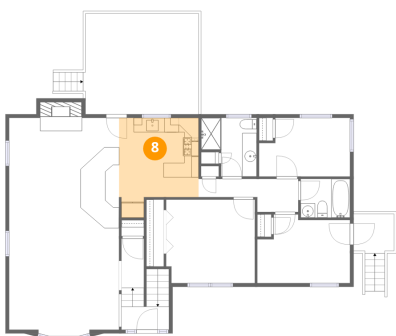
**7** Floor 2 - Foyer



Dimensions: 6'7" x 12'7"  
Area: 68 sq. ft  
Counted as living area: Yes

Heated: Yes  
Finished: Yes  
Enclosed: Yes  
Contiguous: Yes  
Permitted: Yes  
Wet space: No  
Addition: No  
Conversion: No

**8** Floor 2 - Kitchen

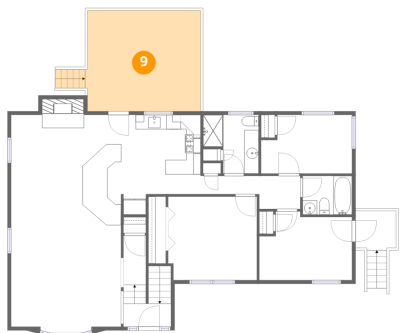


Dimensions: 11'0" x 13'9"  
Area: 129 sq. ft  
Counted as living area: Yes

Heated: Yes  
Finished: Yes  
Enclosed: Yes  
Contiguous: Yes  
Permitted: Yes  
Wet space: No  
Addition: No  
Conversion: No

9 Cushing Drive, Plymouth, Plymouth County, Massachusetts, United States, 02360

9 Floor 2 - Deck



Dimensions: 16'0" x 13'11"  
Area: 230 sq. ft  
Counted as living area: No

Heated: No  
Finished: No  
Enclosed: No  
Contiguous: Yes  
Permitted: Yes  
Wet space: No  
Addition: No  
Conversion: No

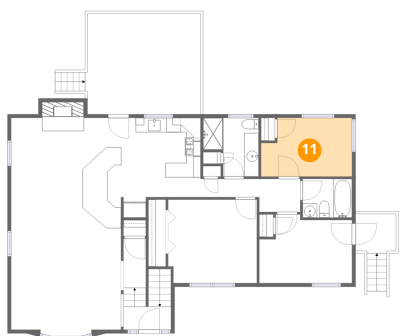
10 Floor 2 - Deck



Dimensions: 5'7" x 5'5"  
Area: 44 sq. ft  
Counted as living area: No

Heated: No  
Finished: No  
Enclosed: No  
Contiguous: Yes  
Permitted: Yes  
Wet space: No  
Addition: No  
Conversion: No

11 Floor 2 - Bedroom

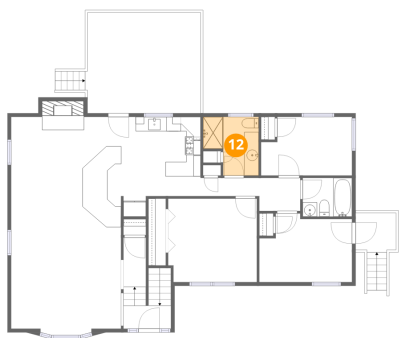


Dimensions: 12'7" x 8'1"  
Area: 94 sq. ft  
Counted as living area: Yes

Heated: Yes  
Finished: Yes  
Enclosed: Yes  
Contiguous: Yes  
Permitted: Yes  
Wet space: No  
Addition: No  
Conversion: No

9 Cushing Drive, Plymouth, Plymouth County, Massachusetts,  
United States, 02360

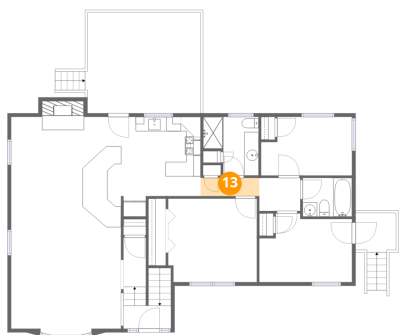
**12** Floor 2 - Bath



Dimensions: 7'8" x 8'1"  
Area: 52 sq. ft  
Counted as living area: Yes

Heated: Yes  
Finished: Yes  
Enclosed: Yes  
Contiguous: Yes  
Permitted: Yes  
Wet space: Yes  
Addition: No  
Conversion: No

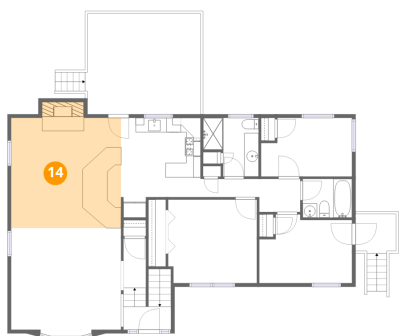
**13** Floor 2 - Hall



Dimensions: 8'1" x 2'6"  
Area: 21 sq. ft  
Counted as living area: Yes

Heated: Yes  
Finished: Yes  
Enclosed: Yes  
Contiguous: Yes  
Permitted: Yes  
Wet space: No  
Addition: No  
Conversion: No

**14** Floor 2 - Dining Area



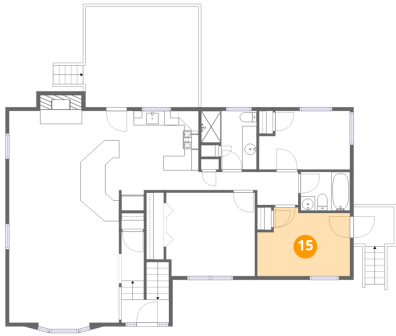
Dimensions: 15'2" x 15'5"  
Area: 244 sq. ft  
Counted as living area: Yes

Heated: Yes  
Finished: Yes  
Enclosed: Yes  
Contiguous: Yes  
Permitted: Yes  
Wet space: No  
Addition: No  
Conversion: No

9 Cushing Drive, Plymouth, Plymouth County, Massachusetts,  
United States, 02360

**15** Floor 2 - Bedroom

---

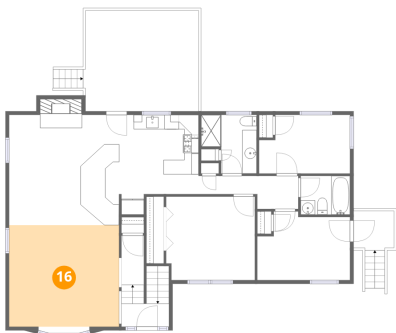


Dimensions: 12'10" x 9'6"  
Area: 108 sq. ft  
Counted as living area: Yes

Heated: Yes  
Finished: Yes  
Enclosed: Yes  
Contiguous: Yes  
Permitted: Yes  
Wet space: No  
Addition: No  
Conversion: No

**16** Floor 2 - Living Room

---



Dimensions: 15'2" x 14'0"  
Area: 213 sq. ft  
Counted as living area: Yes

Heated: Yes  
Finished: Yes  
Enclosed: Yes  
Contiguous: Yes  
Permitted: Yes  
Wet space: No  
Addition: No  
Conversion: No