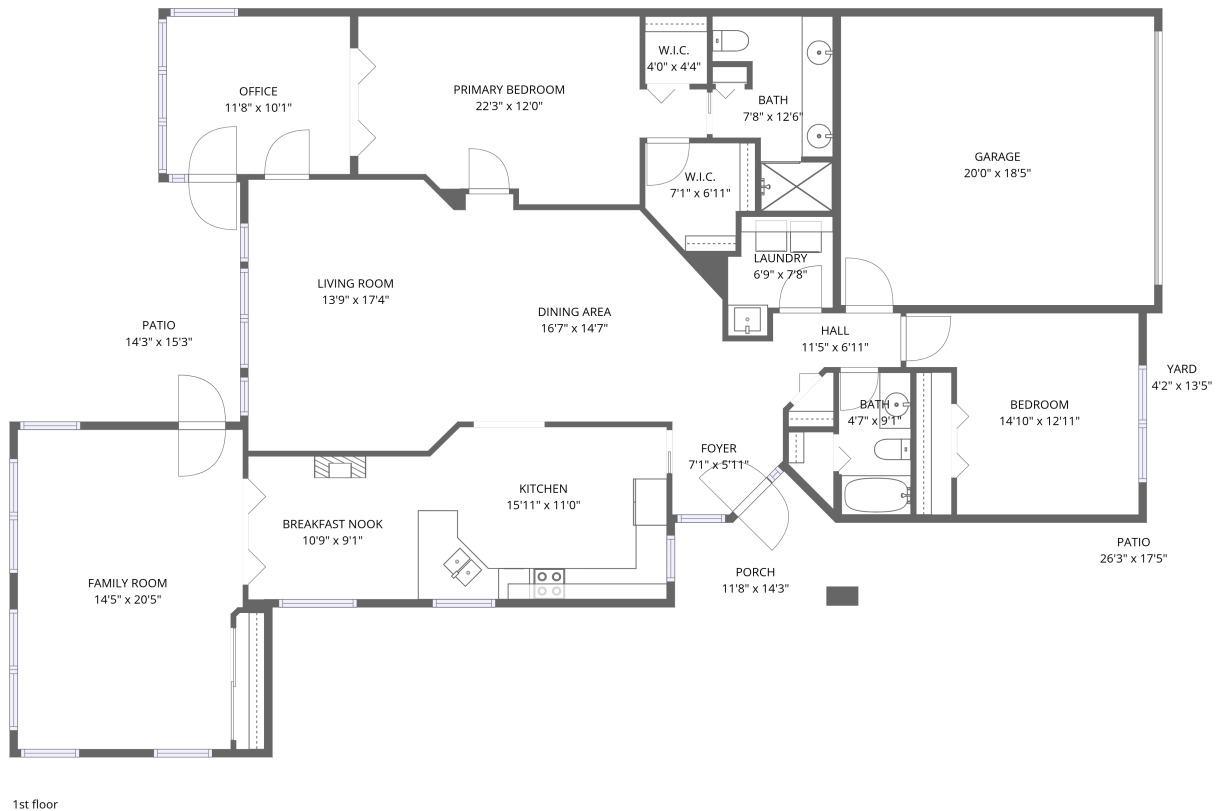


Home data report

1462 Shady Brook Court, Timber Pines, Spring Hill, Hernando County, Florida, United States, 34606



Total Area: 1938 sq. ft

1st Floor: 1938 sq. ft

Excluded: Garage 370 sq. ft, Porch 122 sq. ft, Patio 323 sq. ft, Walls: 146 sq. ft

Property summary



1
Floors



2
Bedrooms



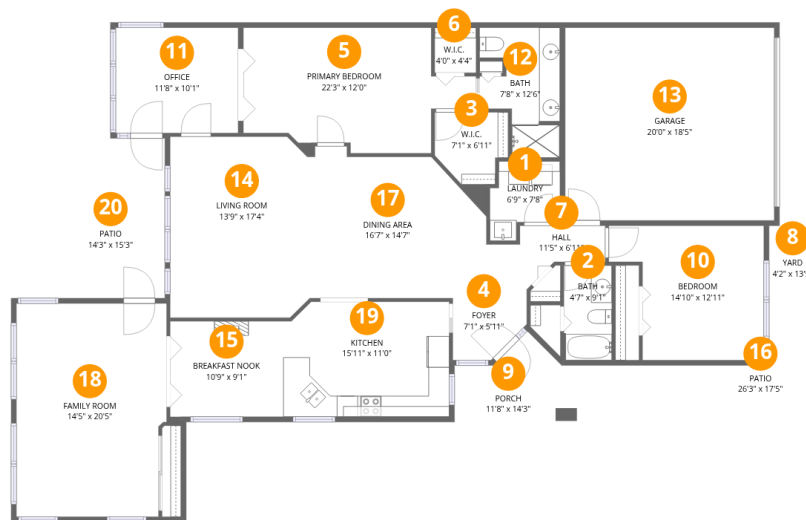
2
Bathrooms



1
Garages

Home data report

1462 Shady Brook Court, Timber Pines, Spring Hill, Hernando County, Florida, United States, 34606



Room dimensions

Floor 1

Total:1938sqft Excluded: 815sqft

#		Dimensions	sqft	Counted as living area
1	Laundry	6'9" x 7'8"	42 sq. ft	Yes
2	Bath	4'7" x 9'1"	42 sq. ft	Yes
3	W.I.C.	7'1" x 6'11"	45 sq. ft	Yes
4	Foyer	7'1" x 5'11"	36 sq. ft	Yes
5	Primary Bedroom	22'3" x 12'0"	216 sq. ft	Yes
6	W.I.C.	4'0" x 4'4"	17 sq. ft	Yes
7	Hall	11'5" x 6'11"	51 sq. ft	Yes
8	Yard	4'2" x 13'5"	56 sq. ft	No
9	Porch	11'8" x 14'3"	122 sq. ft	No
10	Bedroom	14'10" x 12'11"	161 sq. ft	Yes
11	Office	11'8" x 10'1"	118 sq. ft	Yes

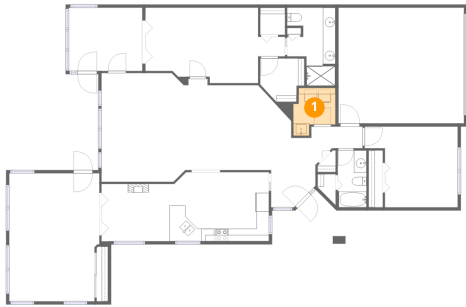
Home data report

1462 Shady Brook Court, Timber Pines, Spring Hill, Hernando County, Florida, United States, 34606

#		Dimensions	sqft	Counted as living area
12	Bath	7'8" x 12'6"	76 sq. ft	Yes
13	Garage	20'0" x 18'5"	370 sq. ft	No
14	Living Room	13'9" x 17'4"	233 sq. ft	Yes
15	Breakfast Nook	10'9" x 9'1"	99 sq. ft	Yes
16	Patio	26'3" x 17'5"	156 sq. ft	No
17	Dining Area	16'7" x 14'7"	213 sq. ft	Yes
18	Family Room	14'5" x 20'5"	287 sq. ft	Yes
19	Kitchen	15'11" x 11'0"	173 sq. ft	Yes
20	Patio	14'3" x 15'3"	167 sq. ft	No

1462 Shady Brook Court, Timber Pines, Spring Hill, Hernando County, Florida, United States, 34606

1 Floor 1 - Laundry



Dimensions: 6'9" x 7'8"
Area: 42 sq. ft
Counted as living area: Yes

Heated: Yes
Finished: Yes
Enclosed: Yes
Contiguous: Yes
Permitted: Yes
Wet space: No
Addition: No
Conversion: No

2 Floor 1 - Bath



Dimensions: 4'7" x 9'1"
Area: 42 sq. ft
Counted as living area: Yes

Heated: Yes
Finished: Yes
Enclosed: Yes
Contiguous: Yes
Permitted: Yes
Wet space: Yes
Addition: No
Conversion: No

1462 Shady Brook Court, Timber Pines, Spring Hill, Hernando County, Florida, United States, 34606

3 Floor 1 - W.I.C.



Dimensions: 7'1" x 6'11"
Area: 45 sq. ft
Counted as living area: Yes

Heated: Yes
Finished: Yes
Enclosed: Yes
Contiguous: Yes
Permitted: Yes
Wet space: No
Addition: No
Conversion: No

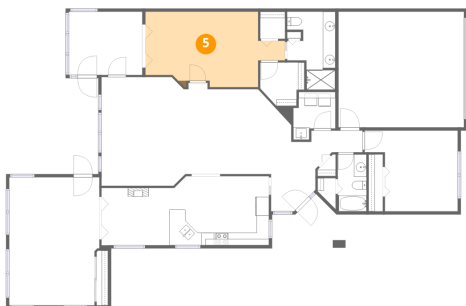
4 Floor 1 - Foyer



Dimensions: 7'1" x 5'11"
Area: 36 sq. ft
Counted as living area: Yes

Heated: Yes
Finished: Yes
Enclosed: Yes
Contiguous: Yes
Permitted: Yes
Wet space: No
Addition: No
Conversion: No

5 Floor 1 - Primary Bedroom

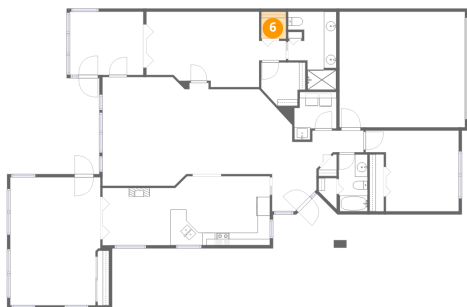


Dimensions: 22'3" x 12'0"
Area: 216 sq. ft
Counted as living area: Yes

Heated: Yes
Finished: Yes
Enclosed: Yes
Contiguous: Yes
Permitted: Yes
Wet space: No
Addition: No
Conversion: No

1462 Shady Brook Court, Timber Pines, Spring Hill, Hernando County, Florida, United States, 34606

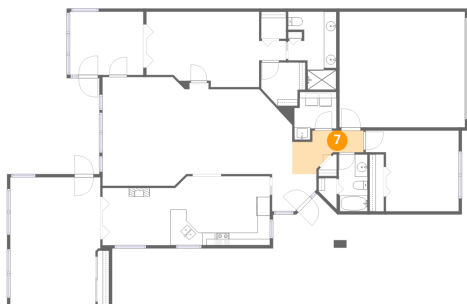
6 Floor 1 - W.I.C.



Dimensions: 4'0" x 4'4"
Area: 17 sq. ft
Counted as living area: Yes

Heated: Yes
Finished: Yes
Enclosed: Yes
Contiguous: Yes
Permitted: Yes
Wet space: No
Addition: No
Conversion: No

7 Floor 1 - Hall



Dimensions: 11'5" x 6'11"
Area: 51 sq. ft
Counted as living area: Yes

Heated: Yes
Finished: Yes
Enclosed: Yes
Contiguous: Yes
Permitted: Yes
Wet space: No
Addition: No
Conversion: No

8 Floor 1 - Yard

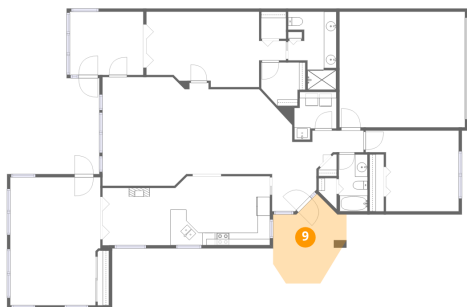


Dimensions: 4'2" x 13'5"
Area: 56 sq. ft
Counted as living area: No

Heated: No
Finished: No
Enclosed: No
Contiguous: Yes
Permitted: No
Wet space: No
Addition: No
Conversion: No

1462 Shady Brook Court, Timber Pines, Spring Hill, Hernando County, Florida, United States, 34606

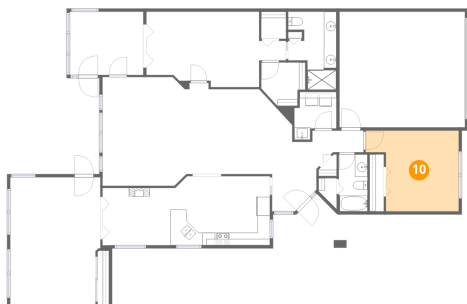
9 Floor 1 - Porch



Dimensions: 11'8" x 14'3"
Area: 122 sq. ft
Counted as living area: No

Heated: No
Finished: No
Enclosed: No
Contiguous: Yes
Permitted: Yes
Wet space: No
Addition: No
Conversion: No

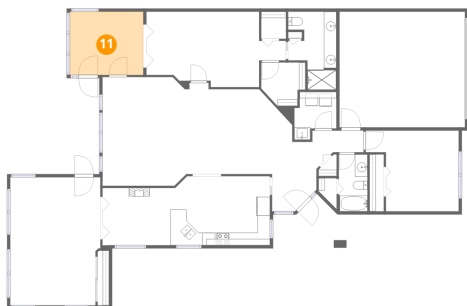
10 Floor 1 - Bedroom



Dimensions: 14'10" x 12'11"
Area: 161 sq. ft
Counted as living area: Yes

Heated: Yes
Finished: Yes
Enclosed: Yes
Contiguous: Yes
Permitted: Yes
Wet space: No
Addition: No
Conversion: No

11 Floor 1 - Office



Dimensions: 11'8" x 10'1"
Area: 118 sq. ft
Counted as living area: Yes

Heated: Yes
Finished: Yes
Enclosed: Yes
Contiguous: Yes
Permitted: Yes
Wet space: No
Addition: No
Conversion: No

1462 Shady Brook Court, Timber Pines, Spring Hill, Hernando County, Florida, United States, 34606

12 Floor 1 - Bath



Dimensions: 7'8" x 12'6"
Area: 76 sq. ft
Counted as living area: Yes

Heated: Yes
Finished: Yes
Enclosed: Yes
Contiguous: Yes
Permitted: Yes
Wet space: Yes
Addition: No
Conversion: No

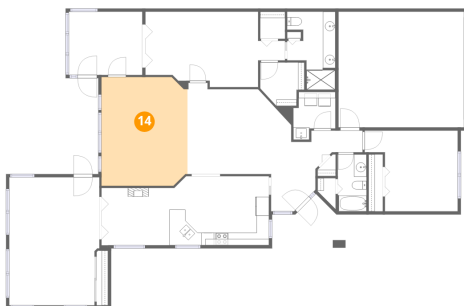
13 Floor 1 - Garage



Dimensions: 20'0" x 18'5"
Area: 370 sq. ft
Counted as living area: No

Heated: No
Finished: No
Enclosed: Yes
Contiguous: Yes
Permitted: Yes
Wet space: No
Addition: No
Conversion: No

14 Floor 1 - Living Room

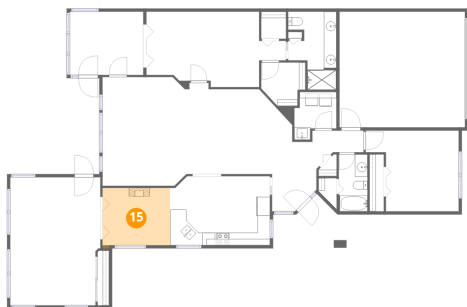


Dimensions: 13'9" x 17'4"
Area: 233 sq. ft
Counted as living area: Yes

Heated: Yes
Finished: Yes
Enclosed: Yes
Contiguous: Yes
Permitted: Yes
Wet space: No
Addition: No
Conversion: No

1462 Shady Brook Court, Timber Pines, Spring Hill, Hernando County, Florida, United States, 34606

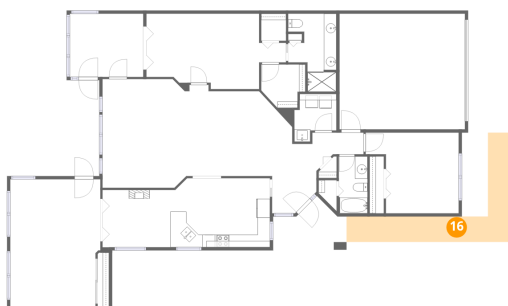
15 Floor 1 - Breakfast Nook



Dimensions: 10'9" x 9'1"
Area: 99 sq. ft
Counted as living area: Yes

Heated: Yes
Finished: Yes
Enclosed: Yes
Contiguous: Yes
Permitted: Yes
Wet space: No
Addition: No
Conversion: No

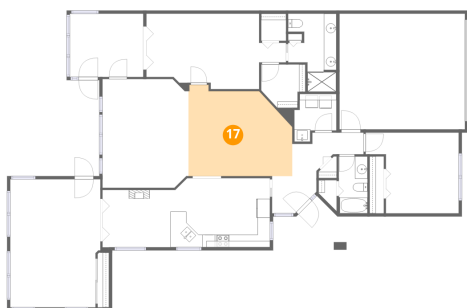
16 Floor 1 - Patio



Dimensions: 26'3" x 17'5"
Area: 156 sq. ft
Counted as living area: No

Heated: No
Finished: No
Enclosed: No
Contiguous: Yes
Permitted: Yes
Wet space: No
Addition: No
Conversion: No

17 Floor 1 - Dining Area

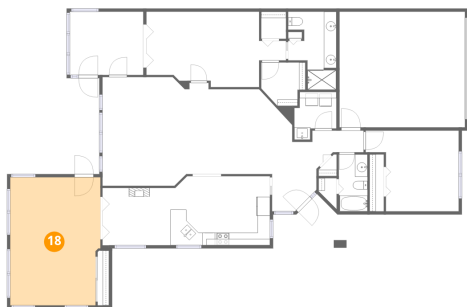


Dimensions: 16'7" x 14'7"
Area: 213 sq. ft
Counted as living area: Yes

Heated: Yes
Finished: Yes
Enclosed: Yes
Contiguous: Yes
Permitted: Yes
Wet space: No
Addition: No
Conversion: No

1462 Shady Brook Court, Timber Pines, Spring Hill, Hernando County, Florida, United States, 34606

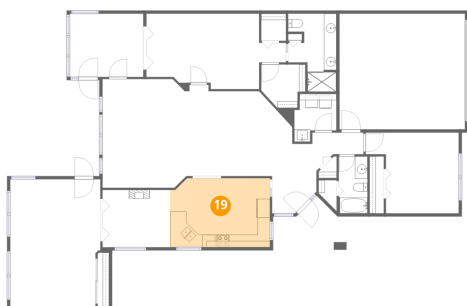
18 Floor 1 - Family Room



Dimensions: 14'5" x 20'5"
Area: 287 sq. ft
Counted as living area: Yes

Heated: Yes
Finished: Yes
Enclosed: Yes
Contiguous: Yes
Permitted: Yes
Wet space: No
Addition: No
Conversion: No

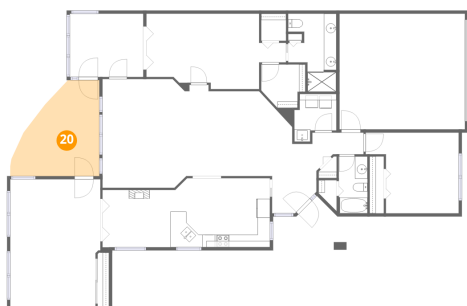
19 Floor 1 - Kitchen



Dimensions: 15'11" x 11'0"
Area: 173 sq. ft
Counted as living area: Yes

Heated: Yes
Finished: Yes
Enclosed: Yes
Contiguous: Yes
Permitted: Yes
Wet space: No
Addition: No
Conversion: No

20 Floor 1 - Patio



Dimensions: 14'3" x 15'3"
Area: 167 sq. ft
Counted as living area: No

Heated: No
Finished: No
Enclosed: No
Contiguous: Yes
Permitted: Yes
Wet space: No
Addition: No
Conversion: No