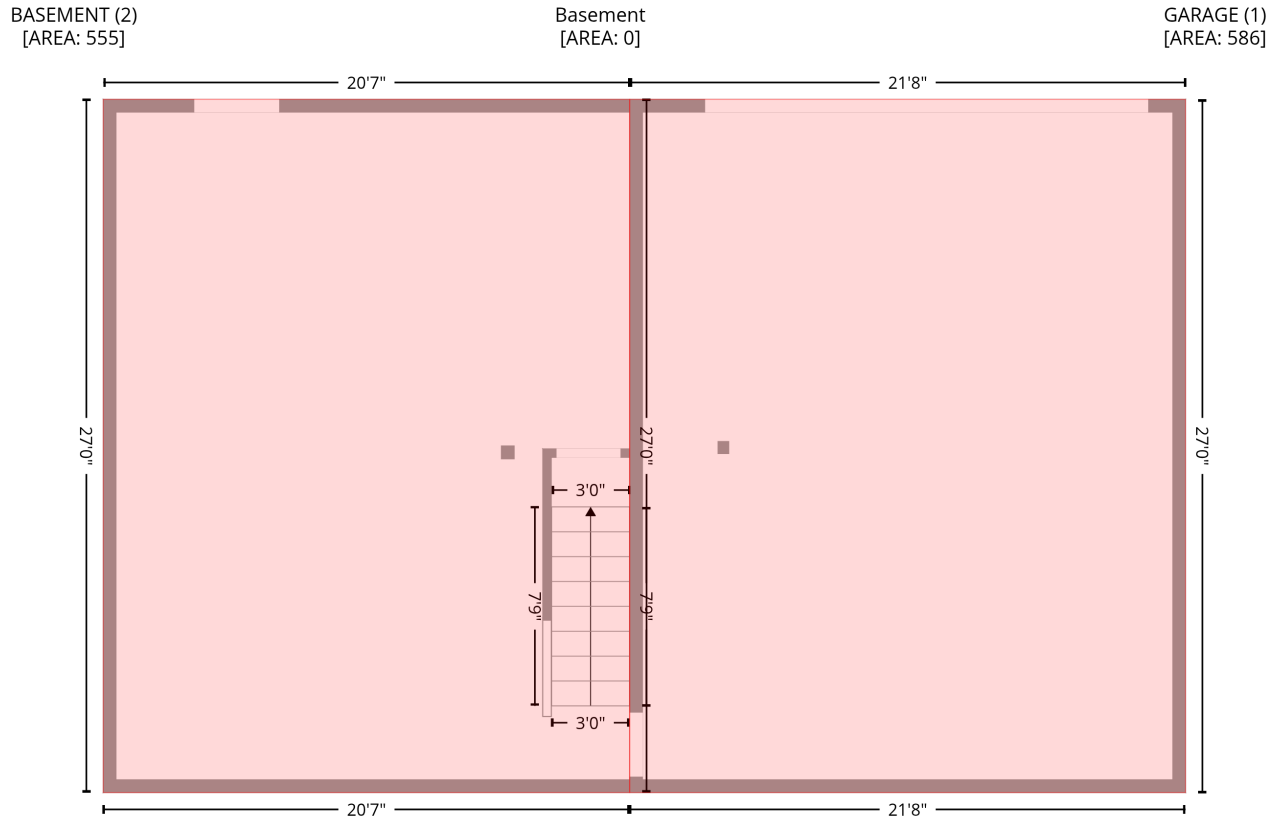


2079 Icard Ridge Rd, Taylorsville, NC, US

Gross Living Area: 1831 sq. ft

Level 1 - Below Grade



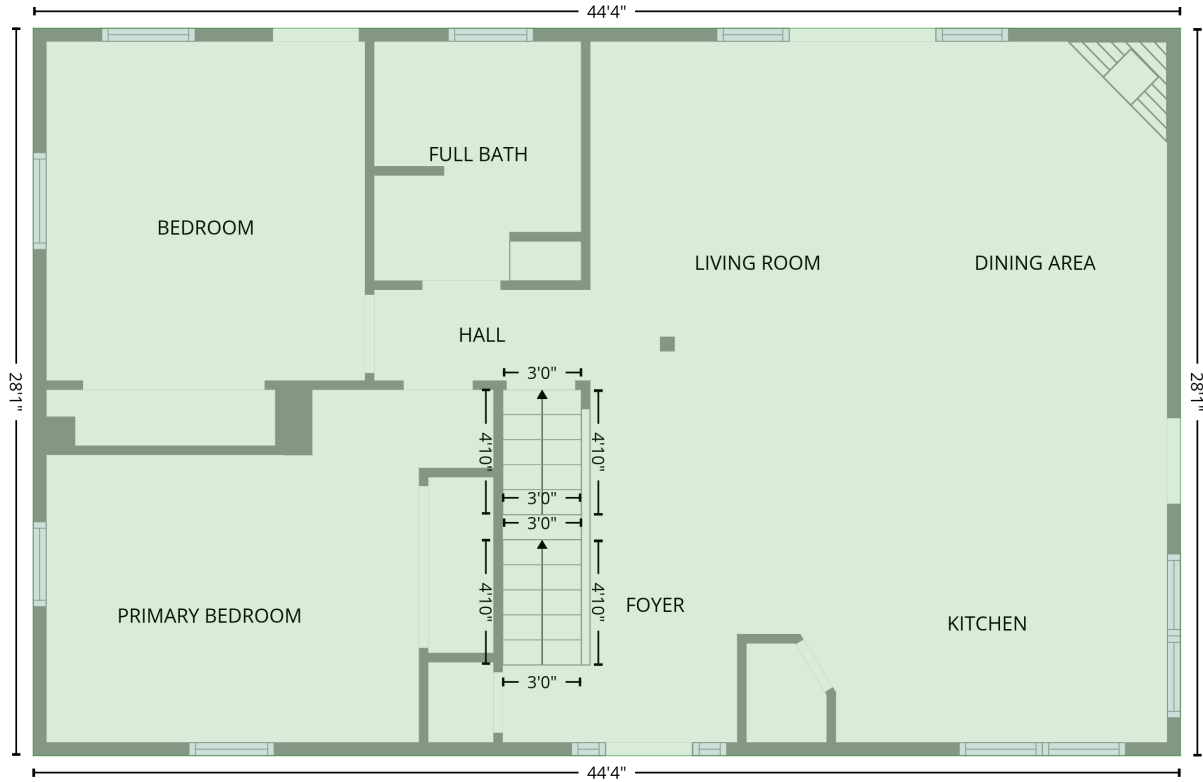
Space	Area (sq. ft)	Calculation <small>Coordinate Polygon Area Algorithm using inches</small>
GARAGE (Non-living area)	586	$-((595.3 + 595.3) * (32 - 356.5) + (595.3 + 335) * (356.5 - 356.5) + (335 + 335) * (356.5 - 32) + (335 + 595.3) * (32 - 32)) * 0.5 * 0.00694$
BASEMENT (Non-living area)	555	$-((335 + 335) * (32 - 356.5) + (335 + 88.5) * (356.5 - 356.5) + (88.5 + 88.5) * (356.5 - 32) + (88.5 + 335) * (32 - 32)) * 0.5 * 0.00694$

2079 Icard Ridge Rd, Taylorsville, NC, US

Gross Living Area: 1831 sq. ft

Level 2

1st floor
[AREA: 1247]

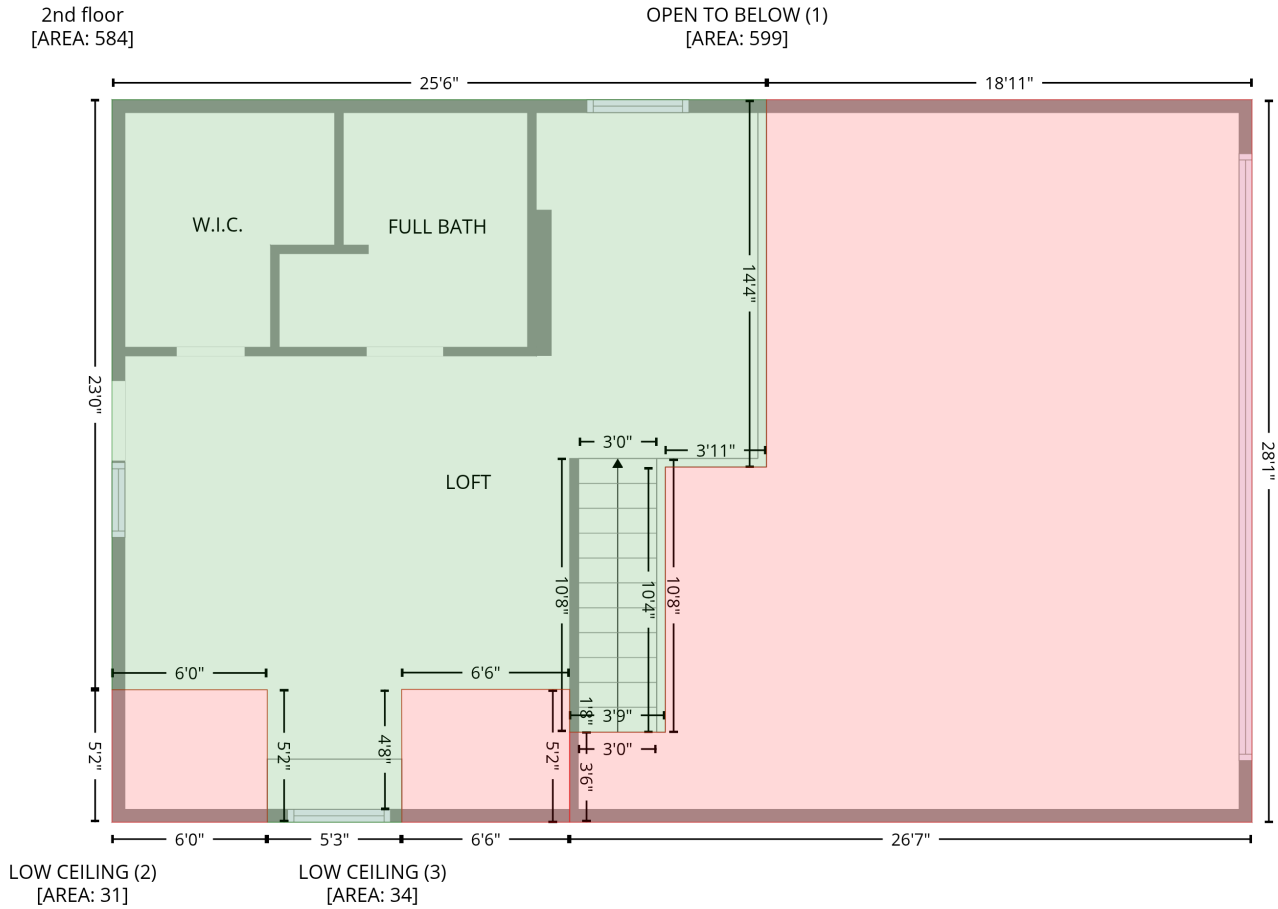


Space	Area (sq. ft)	Calculation <small>Coordinate Polygon Area Algorithm using inches</small>
1st floor (Living area)	1247	$-((612.9 + 612.9) * (32 - 369.5) + (612.9 + 80.6) * (369.5 - 369.5) + (80.6 + 80.6) * (369.5 - 32) + (80.6 + 612.9) * (32 - 32)) * 0.5 * 0.00694$

2079 Icard Ridge Rd, Taylorsville, NC, US

Gross Living Area: 1831 sq. ft

Level 3



Space	Area (sq. ft)	Calculation
2nd floor (Living area)	584	$-\left((386.2 + 386.2) * (32 - 203.6) + (386.2 + 339) * (203.6 - 203.6) + (339 + 339) * (203.6 - 327.4) + (339 + 294.3) * (327.4 - 327.4) + (294.3 + 294.3) * (327.4 - 307.4) + (294.3 + 215.9) * (307.4 - 307.4) + (215.9 + 216) * (307.4 - 363.5) + (216 + 216) * (363.5 - 369.5) + (216 + 153.1) * (369.5 - 369.5) + (153.1 + 153.1) * (369.5 - 307.6) + (153.1 + 80.6) * (307.6 - 307.6) + (80.6 + 80.6) * (307.6 - 32) + (80.6 + 386.2) * (32 - 32)\right) * 0.5 * 0.00694$
OPEN TO BELOW (Non-living area)	599	$-\left((612.9 + 612.9) * (32 - 369.5) + (612.9 + 294.3) * (369.5 - 369.5) + (294.3 + 294.3) * (369.5 - 327.4) + (294.3 + 339) * (327.4 - 327.4) + (339 + 339) * (327.4 - 203.6) + (339 + 386.2) * (203.6 - 203.6) + (386.2 + 386.2) * (203.6 - 32) + (386.2 + 612.9) * (32 - 32)\right) * 0.5 * 0.00694$
LOW CEILING (Non-living area)	31	$-\left((153.1 + 153.1) * (307.6 - 369.5) + (153.1 + 80.6) * (369.5 - 369.5) + (80.6 + 80.6) * (369.5 - 307.6) + (80.6 + 153.1) * (307.6 - 307.6)\right) * 0.5 * 0.00694$
LOW CEILING (Non-living area)	34	$-\left((294.3 + 294.3) * (307.4 - 369.5) + (294.3 + 216) * (369.5 - 369.5) + (216 + 216) * (369.5 - 363.5) + (216 + 215.9) * (363.5 - 307.4) + (215.9 + 294.3) * (307.4 - 307.4)\right) * 0.5 * 0.00694$