

Home data report

3771 Read Mountain Road, Apple Tree Village, Cloverdale,
Botetourt County, Virginia, United States, 24077



Total Area: 2396 sq. ft

1st Floor: 835 sq. ft, 2nd Floor: 1561 sq. ft

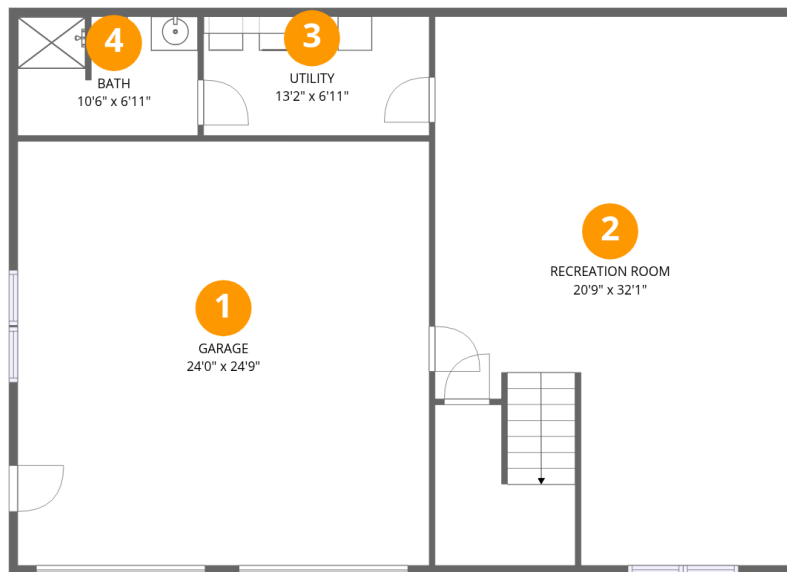
Excluded: Garage 595 sq. ft, Porch 76 sq. ft, Deck 147 sq. ft, Fireplace 9 sq. ft, Walls: 175 sq. ft

Property summary



Home data report

3771 Read Mountain Road, Apple Tree Village, Cloverdale,
Botetourt County, Virginia, United States, 24077



Room dimensions

Floor 1

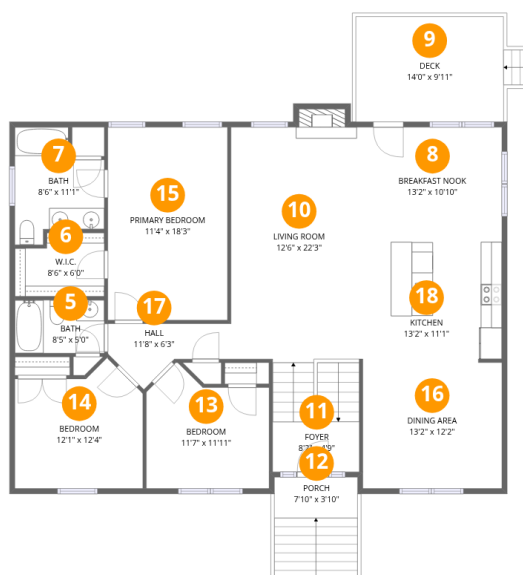
Total:835sqft

Excluded: 595sqft

#		Dimensions	sqft	Counted as living area
1	Garage	24'0" x 24'9"	595 sq. ft	No
2	Recreation Room	20'9" x 32'1"	665 sq. ft	Yes
3	Utility	13'2" x 6'11"	92 sq. ft	Yes
4	Bath	10'6" x 6'11"	73 sq. ft	Yes

Home data report

3771 Read Mountain Road, Apple Tree Village, Cloverdale,
Botetourt County, Virginia, United States, 24077



Room dimensions

Floor 2

Total:1561sqft Excluded: 232sqft

#		Dimensions	sqft	Counted as living area
5	Bath	8'5" x 5'0"	42 sq. ft	Yes
6	W.I.C.	8'6" x 6'0"	51 sq. ft	Yes
7	Bath	8'6" x 11'1"	94 sq. ft	Yes
8	Breakfast Nook	13'2" x 10'10"	143 sq. ft	Yes
9	Deck	14'0" x 9'11"	139 sq. ft	No
10	Living Room	12'6" x 22'3"	277 sq. ft	Yes
11	Foyer	8'2" x 4'9"	39 sq. ft	Yes
12	Porch	7'10" x 3'10"	30 sq. ft	No
13	Bedroom	11'7" x 11'11"	138 sq. ft	Yes
14	Bedroom	12'1" x 12'4"	149 sq. ft	Yes
15	Primary Bedroom	11'4" x 18'3"	206 sq. ft	Yes

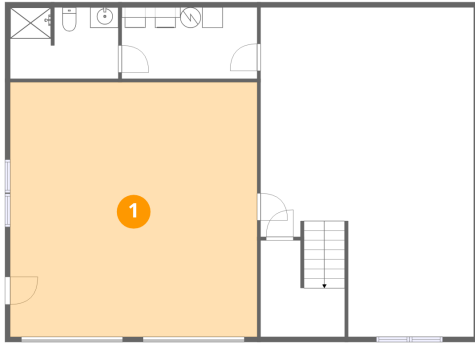
Home data report

**3771 Read Mountain Road, Apple Tree Village, Cloverdale,
Botetourt County, Virginia, United States, 24077**

#		Dimensions	sqft	Counted as living area
16	Dining Area	13'2" x 12'2"	160 sq. ft	Yes
17	Hall	11'8" x 6'3"	73 sq. ft	Yes
18	Kitchen	13'2" x 11'1"	145 sq. ft	Yes

3771 Read Mountain Road, Apple Tree Village, Cloverdale,
Botetourt County, Virginia, United States, 24077

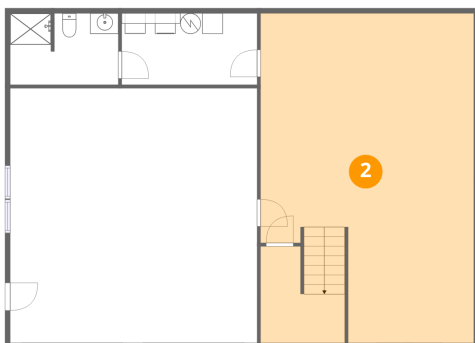
1 Floor 1 - Garage



Dimensions: 24'0" x 24'9"
Area: 595 sq. ft
Counted as living area: No

Heated: No
Finished: No
Enclosed: Yes
Contiguous: Yes
Permitted: Yes
Wet space: No
Addition: No
Conversion: No

2 Floor 1 - Recreation Room

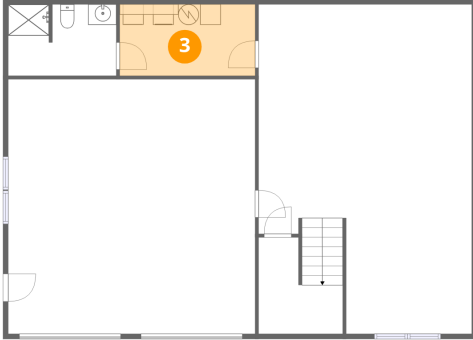


Dimensions: 20'9" x 32'1"
Area: 665 sq. ft
Counted as living area: Yes

Heated: Yes
Finished: Yes
Enclosed: Yes
Contiguous: Yes
Permitted: Yes
Wet space: No
Addition: No
Conversion: No

3771 Read Mountain Road, Apple Tree Village, Cloverdale,
Botetourt County, Virginia, United States, 24077

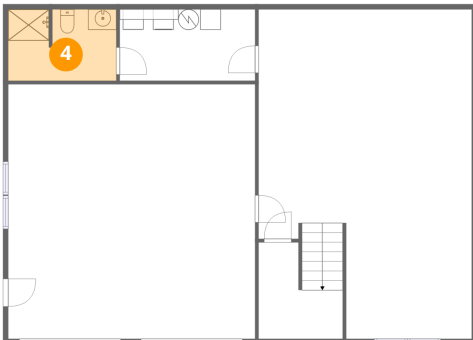
3 Floor 1 - Utility



Dimensions: 13'2" x 6'11"
Area: 92 sq. ft
Counted as living area: Yes

Heated: Yes
Finished: Yes
Enclosed: Yes
Contiguous: Yes
Permitted: Yes
Wet space: No
Addition: No
Conversion: No

4 Floor 1 - Bath



Dimensions: 10'6" x 6'11"
Area: 73 sq. ft
Counted as living area: Yes

Heated: Yes
Finished: Yes
Enclosed: Yes
Contiguous: Yes
Permitted: Yes
Wet space: Yes
Addition: No
Conversion: No

5 Floor 2 - Bath



Dimensions: 8'5" x 5'0"
Area: 42 sq. ft
Counted as living area: Yes

Heated: Yes
Finished: Yes
Enclosed: Yes
Contiguous: Yes
Permitted: Yes
Wet space: Yes
Addition: No
Conversion: No

3771 Read Mountain Road, Apple Tree Village, Cloverdale,
Botetourt County, Virginia, United States, 24077

6 Floor 2 - W.I.C.



Dimensions: 8'6" x 6'0"
Area: 51 sq. ft
Counted as living area: Yes

Heated: Yes
Finished: Yes
Enclosed: Yes
Contiguous: Yes
Permitted: Yes
Wet space: No
Addition: No
Conversion: No

7 Floor 2 - Bath



Dimensions: 8'6" x 11'1"
Area: 94 sq. ft
Counted as living area: Yes

Heated: Yes
Finished: Yes
Enclosed: Yes
Contiguous: Yes
Permitted: Yes
Wet space: Yes
Addition: No
Conversion: No

8 Floor 2 - Breakfast Nook



Dimensions: 13'2" x 10'10"
Area: 143 sq. ft
Counted as living area: Yes

Heated: Yes
Finished: Yes
Enclosed: Yes
Contiguous: Yes
Permitted: Yes
Wet space: No
Addition: No
Conversion: No

3771 Read Mountain Road, Apple Tree Village, Cloverdale,
Botetourt County, Virginia, United States, 24077

9 Floor 2 - Deck



Dimensions: 14'0" x 9'11"
Area: 139 sq. ft
Counted as living area: No

Heated: No
Finished: No
Enclosed: No
Contiguous: Yes
Permitted: Yes
Wet space: No
Addition: No
Conversion: No

10 Floor 2 - Living Room



Dimensions: 12'6" x 22'3"
Area: 277 sq. ft
Counted as living area: Yes

Heated: Yes
Finished: Yes
Enclosed: Yes
Contiguous: Yes
Permitted: Yes
Wet space: No
Addition: No
Conversion: No

11 Floor 2 - Foyer



Dimensions: 8'2" x 4'9"
Area: 39 sq. ft
Counted as living area: Yes

Heated: Yes
Finished: Yes
Enclosed: Yes
Contiguous: Yes
Permitted: Yes
Wet space: No
Addition: No
Conversion: No

3771 Read Mountain Road, Apple Tree Village, Cloverdale,
Botetourt County, Virginia, United States, 24077

12 Floor 2 - Porch



Dimensions: 7'10" x 3'10"
Area: 30 sq. ft
Counted as living area: No

Heated: No
Finished: No
Enclosed: No
Contiguous: Yes
Permitted: Yes
Wet space: No
Addition: No
Conversion: No

13 Floor 2 - Bedroom



Dimensions: 11'7" x 11'11"
Area: 138 sq. ft
Counted as living area: Yes

Heated: Yes
Finished: Yes
Enclosed: Yes
Contiguous: Yes
Permitted: Yes
Wet space: No
Addition: No
Conversion: No

14 Floor 2 - Bedroom



Dimensions: 12'1" x 12'4"
Area: 149 sq. ft
Counted as living area: Yes

Heated: Yes
Finished: Yes
Enclosed: Yes
Contiguous: Yes
Permitted: Yes
Wet space: No
Addition: No
Conversion: No

3771 Read Mountain Road, Apple Tree Village, Cloverdale,
Botetourt County, Virginia, United States, 24077

15 Floor 2 - Primary Bedroom



Dimensions: 11'4" x 18'3"
Area: 206 sq. ft
Counted as living area: Yes

Heated: Yes
Finished: Yes
Enclosed: Yes
Contiguous: Yes
Permitted: Yes
Wet space: No
Addition: No
Conversion: No

16 Floor 2 - Dining Area



Dimensions: 13'2" x 12'2"
Area: 160 sq. ft
Counted as living area: Yes

Heated: Yes
Finished: Yes
Enclosed: Yes
Contiguous: Yes
Permitted: Yes
Wet space: No
Addition: No
Conversion: No

17 Floor 2 - Hall



Dimensions: 11'8" x 6'3"
Area: 73 sq. ft
Counted as living area: Yes

Heated: Yes
Finished: Yes
Enclosed: Yes
Contiguous: Yes
Permitted: Yes
Wet space: No
Addition: No
Conversion: No

**3771 Read Mountain Road, Apple Tree Village, Cloverdale,
Botetourt County, Virginia, United States, 24077**

18 Floor 2 - Kitchen



Dimensions: 13'2" x 11'1"
Area: 145 sq. ft
Counted as living area: Yes

Heated: Yes
Finished: Yes
Enclosed: Yes
Contiguous: Yes
Permitted: Yes
Wet space: No
Addition: No
Conversion: No