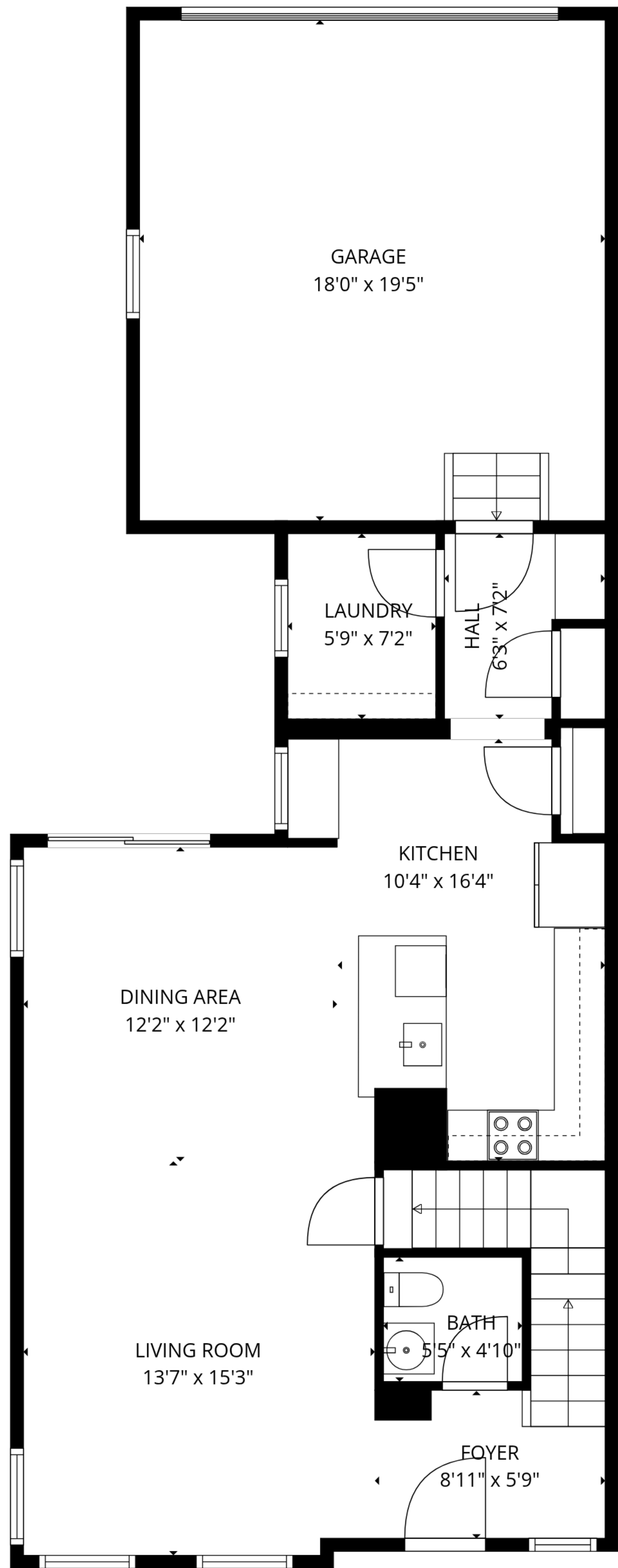


BASEMENT  
22'6" x 26'5"

**TOTAL: 1371 sq. ft**

BELOW GRADE: 0 sq. ft, 1st floor: 760 sq. ft, 2nd floor: 611 sq. ft  
EXCLUDED AREAS: BASEMENT: 597 sq. ft, GARAGE: 350 sq. ft, WALLS: 167 sq. ft

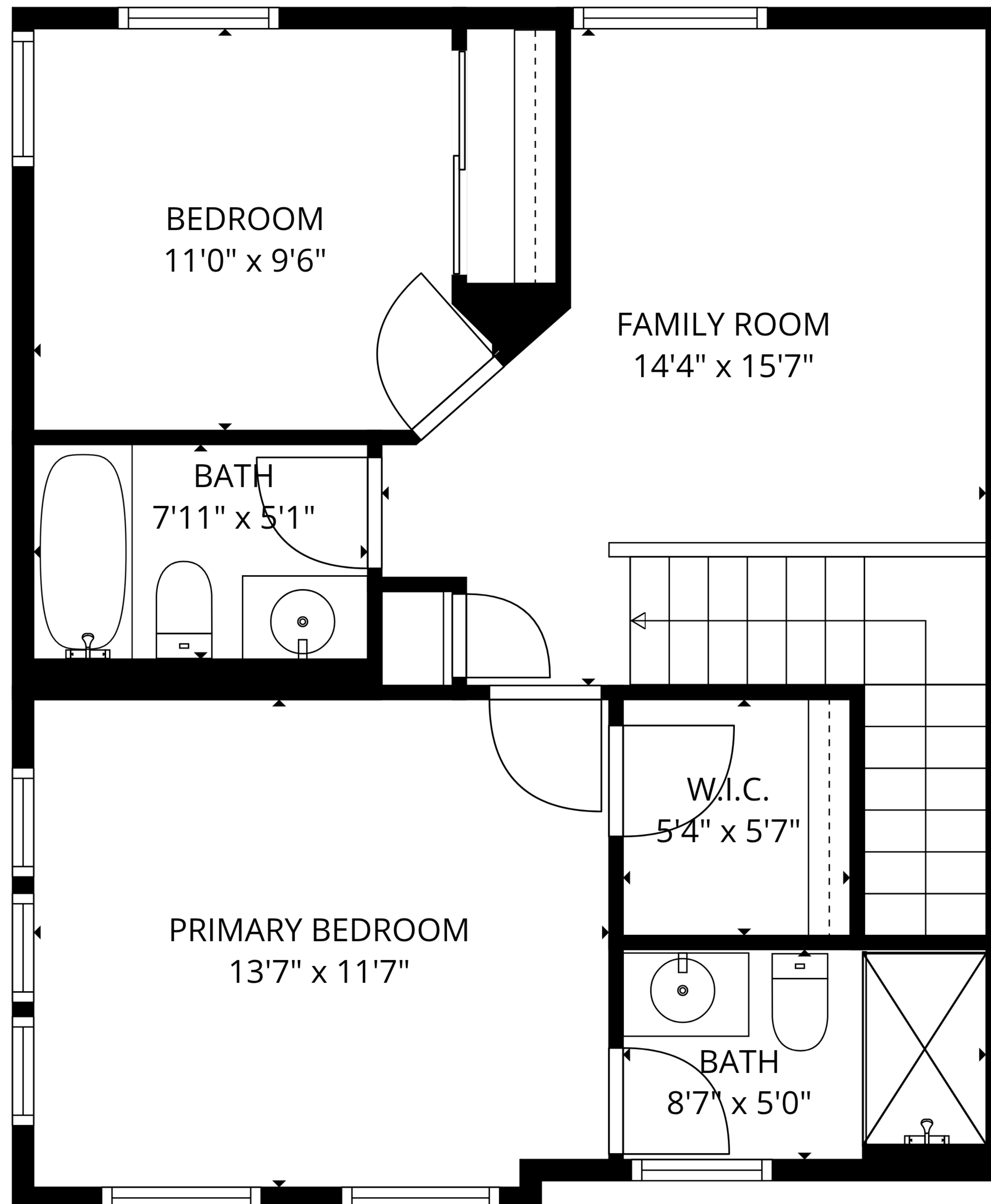
SIZES AND DIMENSIONS ARE APPROXIMATE, ACTUAL MAY VARY.



**TOTAL: 1371 sq. ft**

BELOW GRADE: 0 sq. ft, 1st floor: 760 sq. ft, 2nd floor: 611 sq. ft  
EXCLUDED AREAS: BASEMENT: 597 sq. ft, GARAGE: 350 sq. ft, WALLS: 167 sq. ft

SIZES AND DIMENSIONS ARE APPROXIMATE, ACTUAL MAY VARY.

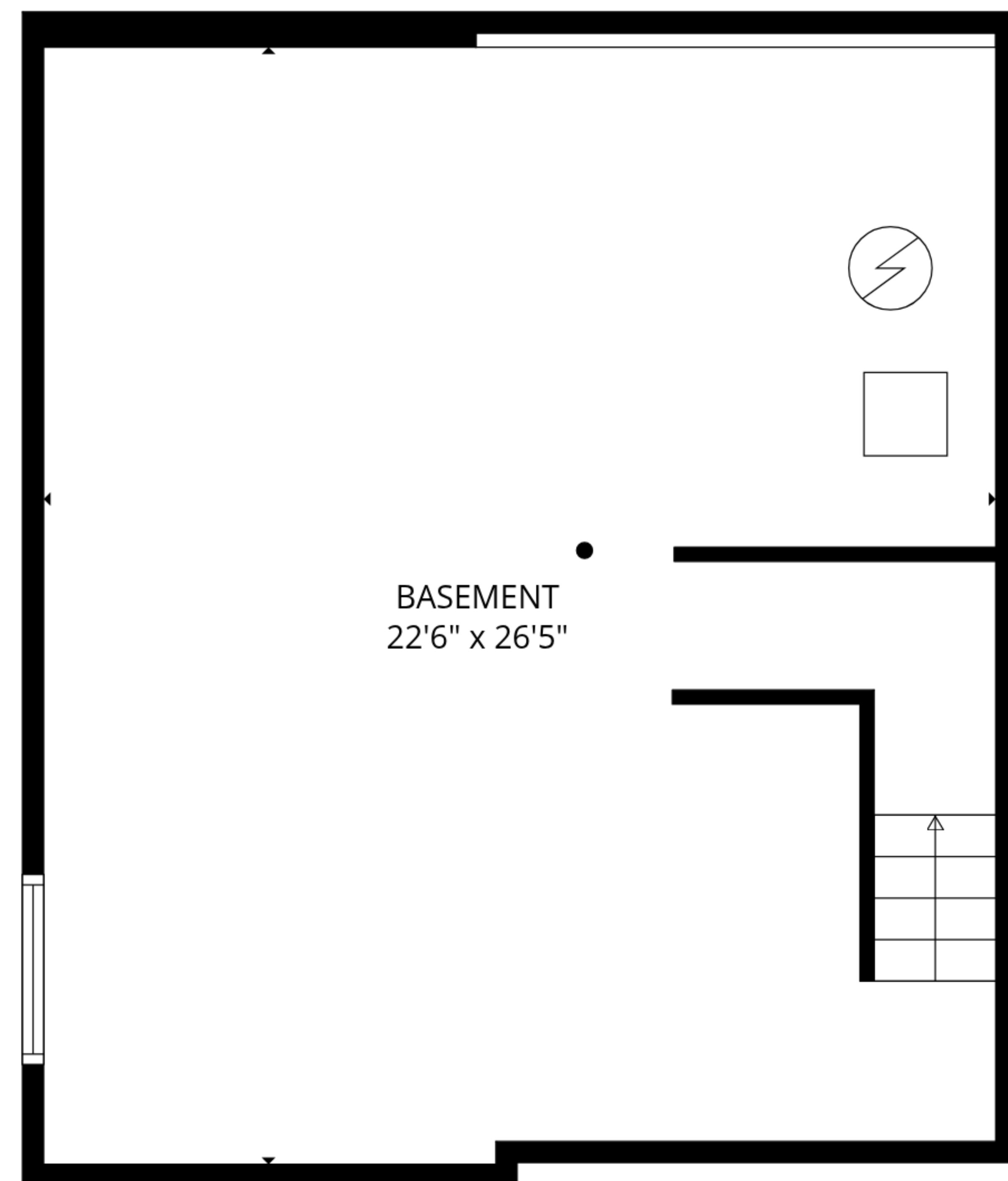


**TOTAL: 1371 sq. ft**

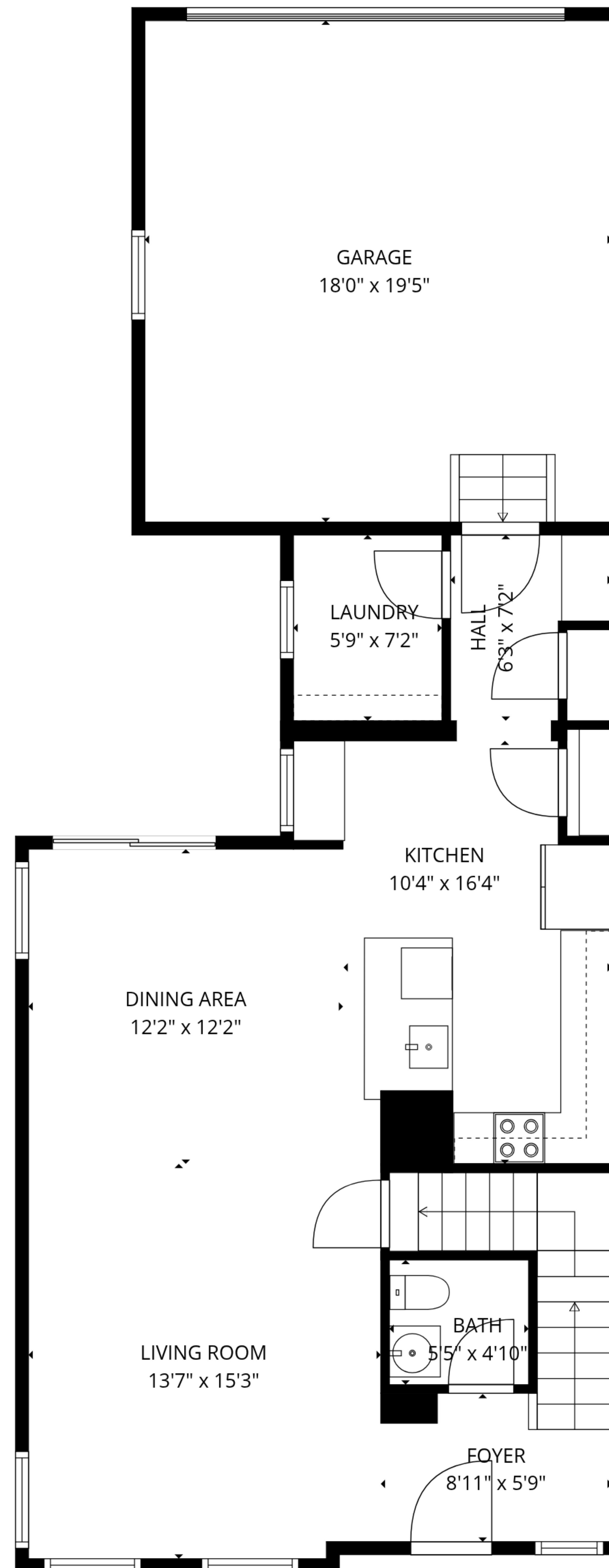
BELOW GRADE: 0 sq. ft, 1st floor: 760 sq. ft, 2nd floor: 611 sq. ft

EXCLUDED AREAS: BASEMENT: 597 sq. ft, GARAGE: 350 sq. ft, WALLS: 167 sq. ft

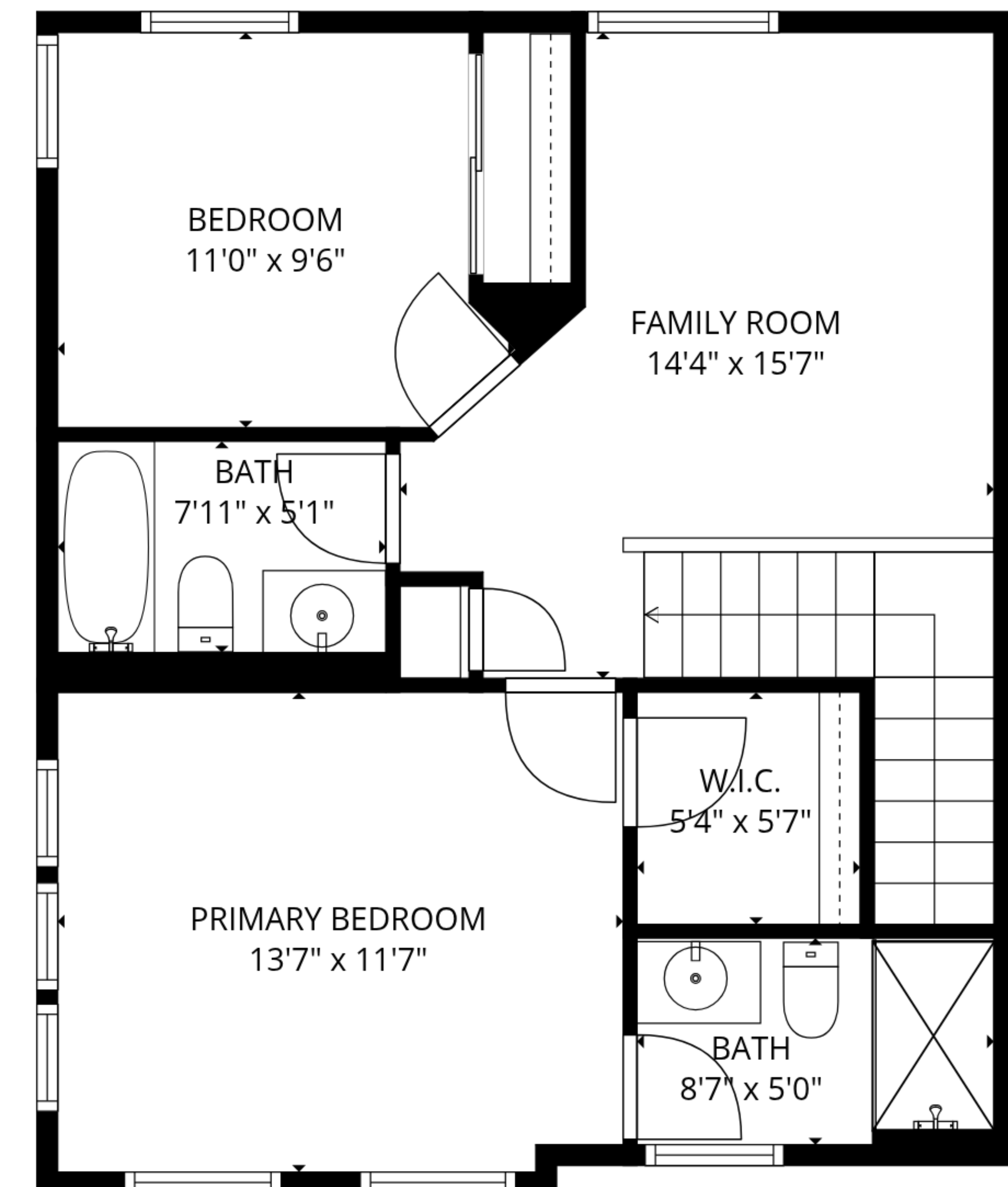
SIZES AND DIMENSIONS ARE APPROXIMATE, ACTUAL MAY VARY.



Basement 1



1st floor



2nd floor

**TOTAL: 1371 sq. ft**  
 BELOW GRADE: 0 sq. ft, 1st floor: 760 sq. ft, 2nd floor: 611 sq. ft  
 EXCLUDED AREAS: BASEMENT: 597 sq. ft, GARAGE: 350 sq. ft, WALLS: 167 sq. ft

SIZES AND DIMENSIONS ARE APPROXIMATE, ACTUAL MAY VARY.