

Home data report

8044 Craig Farm Drive, Metcalfe, Ontario, Canada, K0A 2P0



Total Area: 2669 sq. ft

Basement: 778 sq. ft, 1st Floor: 998 sq. ft, 2nd Floor: 893 sq. ft

Excluded: Utility 147 sq. ft, Storage 62 sq. ft, Fireplace 9 sq. ft, Walls: 209 sq. ft

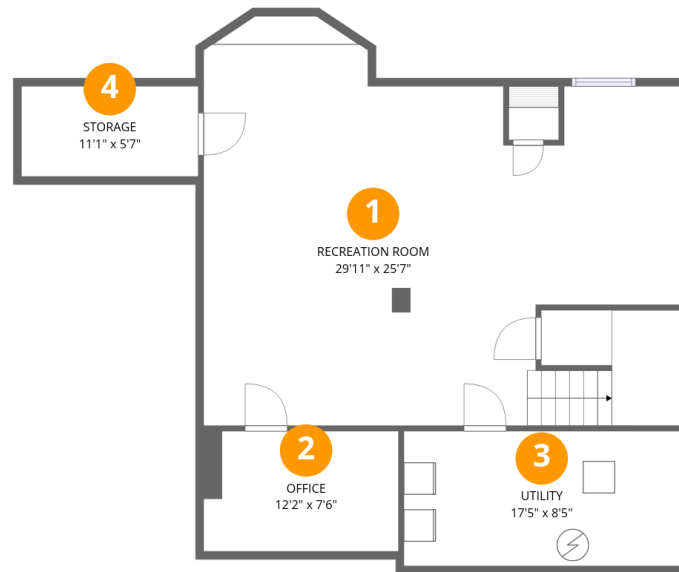
Property summary

 **3** Floors

 **4** Bedrooms

 **1** Bathrooms

 **2** Half baths



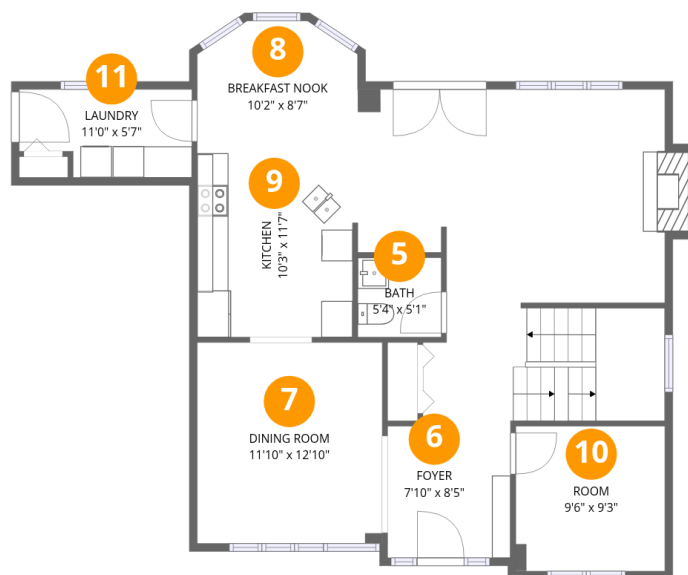
Room dimensions

Floor 1 Below grade

Total:778sqft

Excluded: 209sqft

#		Dimensions	sqft	Counted as living area
1	Recreation Room	29'11" x 25'7"	765 sq. ft	Yes
2	Office	12'2" x 7'6"	91 sq. ft	Yes
3	Utility	17'5" x 8'5"	147 sq. ft	No
4	Storage	11'1" x 5'7"	62 sq. ft	No



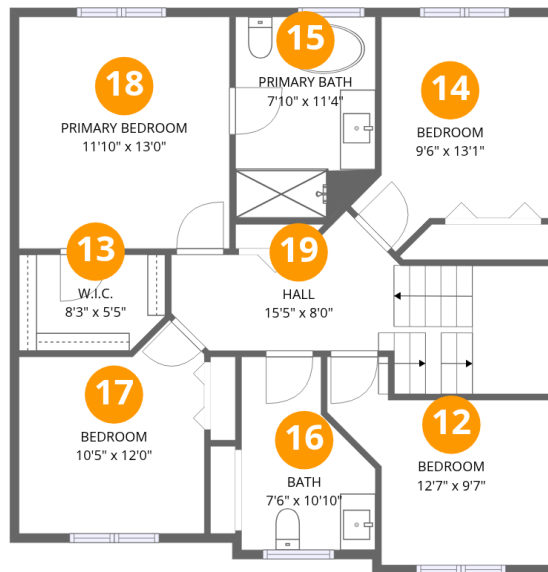
Room dimensions

Floor 2

Total:998sqft

Excluded: 9sqft

#		Dimensions	sqft	Counted as living area
5	Bath	5'4" x 5'1"	27 sq. ft	Yes
6	Foyer	7'10" x 8'5"	66 sq. ft	Yes
7	Dining Room	11'10" x 12'10"	152 sq. ft	Yes
8	Breakfast Nook	10'2" x 8'7"	88 sq. ft	Yes
9	Kitchen	10'3" x 11'7"	118 sq. ft	Yes
10	Room	9'6" x 9'3"	88 sq. ft	Yes
11	Laundry	11'0" x 5'7"	62 sq. ft	Yes



Room dimensions

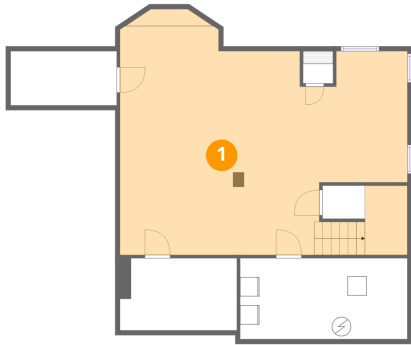
Floor 3

Total:893sqft

Excluded: 0sqft

#		Dimensions	sqft	Counted as living area
12	Bedroom	12'7" x 9'7"	121 sq. ft	Yes
13	W.I.C.	8'3" x 5'5"	45 sq. ft	Yes
14	Bedroom	9'6" x 13'1"	125 sq. ft	Yes
15	Primary Bath	7'10" x 11'4"	89 sq. ft	Yes
16	Bath	7'6" x 10'10"	82 sq. ft	Yes
17	Bedroom	10'5" x 12'0"	125 sq. ft	Yes
18	Primary Bedroom	11'10" x 13'0"	154 sq. ft	Yes
19	Hall	15'5" x 8'0"	124 sq. ft	Yes

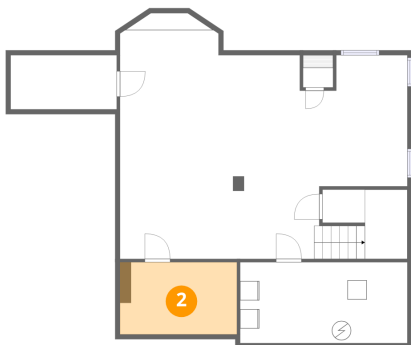
1 Floor 1 - Recreation Room



Dimensions: 29'11" x 25'7"
Area: 765 sq. ft
Counted as living area: No

Heated: Yes
Finished: Yes
Enclosed: Yes
Contiguous: Yes
Permitted: Yes
Wet space: No
Addition: No
Conversion: No

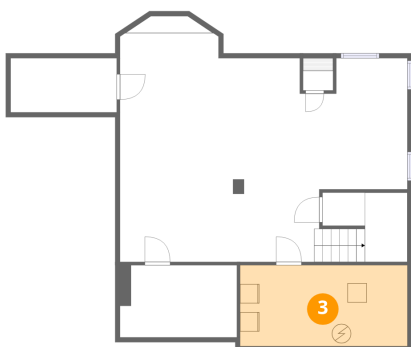
2 Floor 1 - Office



Dimensions: 12'2" x 7'6"
Area: 91 sq. ft
Counted as living area: Yes

Heated: Yes
Finished: Yes
Enclosed: Yes
Contiguous: Yes
Permitted: Yes
Wet space: No
Addition: No
Conversion: No

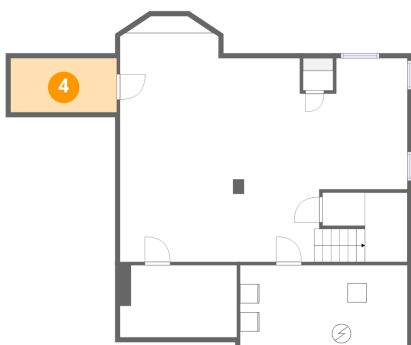
3 Floor 1 - Utility



Dimensions: 17'5" x 8'5"
Area: 147 sq. ft
Counted as living area: No

Heated: Yes
Finished: No
Enclosed: Yes
Contiguous: Yes
Permitted: Yes
Wet space: No
Addition: No
Conversion: No

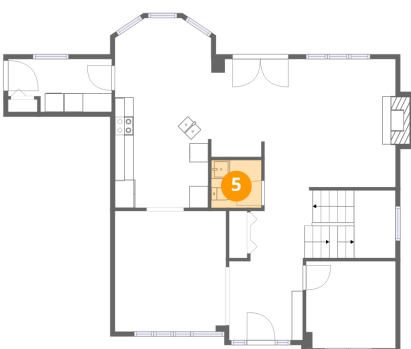
4 Floor 1 - Storage



Dimensions: 11'1" x 5'7"
Area: 62 sq. ft
Counted as living area: No

Heated: No
Finished: No
Enclosed: No
Contiguous: Yes
Permitted: Yes
Wet space: No
Addition: No
Conversion: No

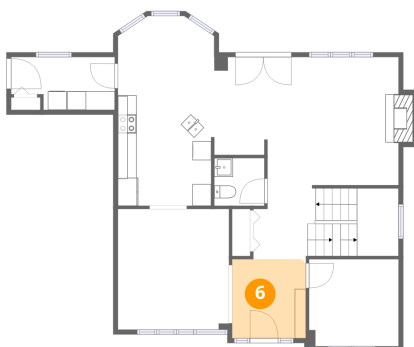
5 Floor 2 - Bath



Dimensions: 5'4" x 5'1"
Area: 27 sq. ft
Counted as living area: Yes

Heated: Yes
Finished: Yes
Enclosed: Yes
Contiguous: Yes
Permitted: Yes
Wet space: Yes
Addition: No
Conversion: No

6 Floor 2 - Foyer



Dimensions: 7'10" x 8'5"
Area: 66 sq. ft
Counted as living area: Yes

Heated: Yes
Finished: Yes
Enclosed: Yes
Contiguous: Yes
Permitted: Yes
Wet space: No
Addition: No
Conversion: No

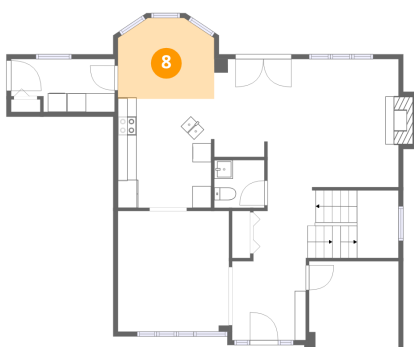
7 Floor 2 - Dining Room



Dimensions: 11'10" x 12'10"
Area: 152 sq. ft
Counted as living area: Yes

Heated: Yes
Finished: Yes
Enclosed: Yes
Contiguous: Yes
Permitted: Yes
Wet space: No
Addition: No
Conversion: No

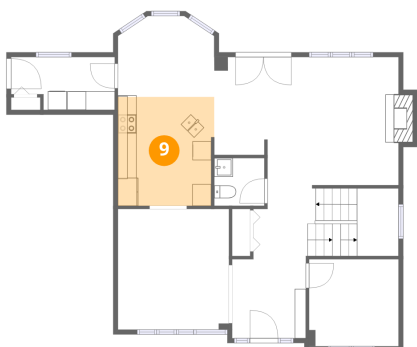
8 Floor 2 - Breakfast Nook



Dimensions: 10'2" x 8'7"
Area: 88 sq. ft
Counted as living area: Yes

Heated: Yes
Finished: Yes
Enclosed: Yes
Contiguous: Yes
Permitted: Yes
Wet space: No
Addition: No
Conversion: No

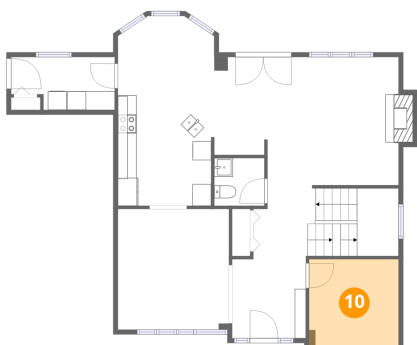
9 Floor 2 - Kitchen



Dimensions: 10'3" x 11'7"
Area: 118 sq. ft
Counted as living area: Yes

Heated: Yes
Finished: Yes
Enclosed: Yes
Contiguous: Yes
Permitted: Yes
Wet space: No
Addition: No
Conversion: No

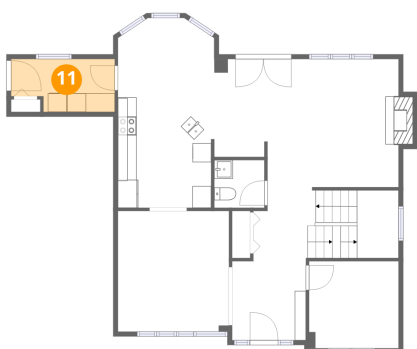
10 Floor 2 - Room



Dimensions: 9'6" x 9'3"
Area: 88 sq. ft
Counted as living area: Yes

Heated: Yes
Finished: Yes
Enclosed: Yes
Contiguous: Yes
Permitted: Yes
Wet space: No
Addition: No
Conversion: No

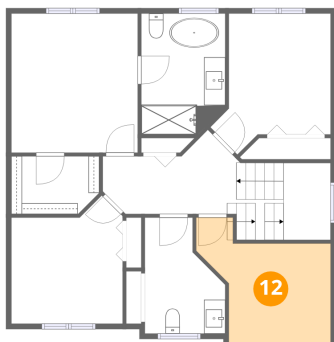
11 Floor 2 - Laundry



Dimensions: 11'0" x 5'7"
Area: 62 sq. ft
Counted as living area: Yes

Heated: Yes
Finished: Yes
Enclosed: Yes
Contiguous: Yes
Permitted: Yes
Wet space: No
Addition: No
Conversion: No

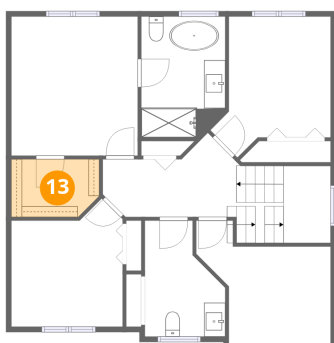
12 Floor 3 - Bedroom



Dimensions: 12'7" x 9'7"
Area: 121 sq. ft
Counted as living area: Yes

Heated: Yes
Finished: Yes
Enclosed: Yes
Contiguous: Yes
Permitted: Yes
Wet space: No
Addition: No
Conversion: No

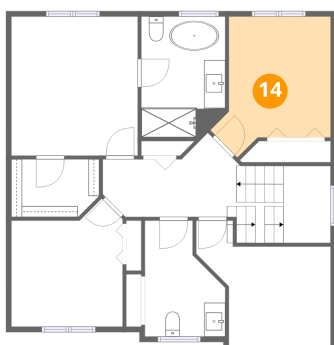
13 Floor 3 - W.I.C.



Dimensions: 8'3" x 5'5"
Area: 45 sq. ft
Counted as living area: Yes

Heated: Yes
Finished: Yes
Enclosed: Yes
Contiguous: Yes
Permitted: Yes
Wet space: No
Addition: No
Conversion: No

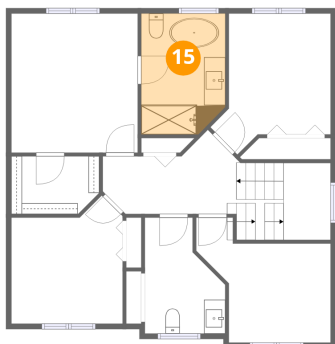
14 Floor 3 - Bedroom



Dimensions: 9'6" x 13'1"
Area: 125 sq. ft
Counted as living area: Yes

Heated: Yes
Finished: Yes
Enclosed: Yes
Contiguous: Yes
Permitted: Yes
Wet space: No
Addition: No
Conversion: No

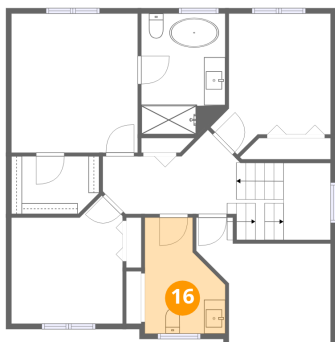
15 Floor 3 - Primary Bath



Dimensions: 7'10" x 11'4"
Area: 89 sq. ft
Counted as living area: Yes

Heated: Yes
Finished: Yes
Enclosed: Yes
Contiguous: Yes
Permitted: Yes
Wet space: Yes
Addition: No
Conversion: No

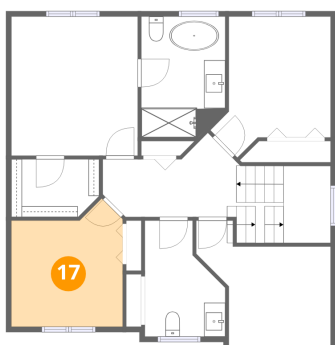
16 Floor 3 - Bath



Dimensions: 7'6" x 10'10"
Area: 82 sq. ft
Counted as living area: Yes

Heated: Yes
Finished: Yes
Enclosed: Yes
Contiguous: Yes
Permitted: Yes
Wet space: Yes
Addition: No
Conversion: No

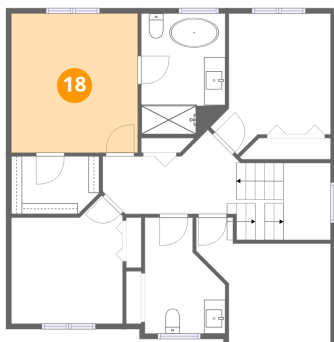
17 Floor 3 - Bedroom



Dimensions: 10'5" x 12'0"
Area: 125 sq. ft
Counted as living area: Yes

Heated: Yes
Finished: Yes
Enclosed: Yes
Contiguous: Yes
Permitted: Yes
Wet space: No
Addition: No
Conversion: No

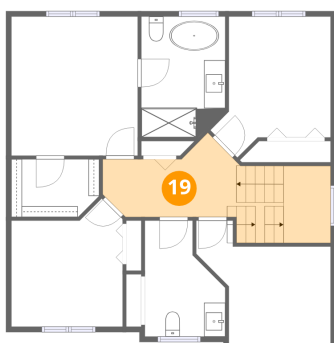
18 Floor 3 - Primary Bedroom



Dimensions: 11'10" x 13'0"
Area: 154 sq. ft
Counted as living area: Yes

Heated: Yes
Finished: Yes
Enclosed: Yes
Contiguous: Yes
Permitted: Yes
Wet space: No
Addition: No
Conversion: No

19 Floor 3 - Hall



Dimensions: 15'5" x 8'0"
Area: 124 sq. ft
Counted as living area: Yes

Heated: Yes
Finished: Yes
Enclosed: Yes
Contiguous: Yes
Permitted: Yes
Wet space: No
Addition: No
Conversion: No